

Poultrymen
(From page 1)

The association operated in the red for the second year in a row. Receipts for the year were off by \$2,485,84, but total expenses were down \$2,992,49. Net loss for 1960 was \$1,875,51 compared to a net loss of \$2,381,23 for the previous year. The association lists a net worth of \$45,578.48.

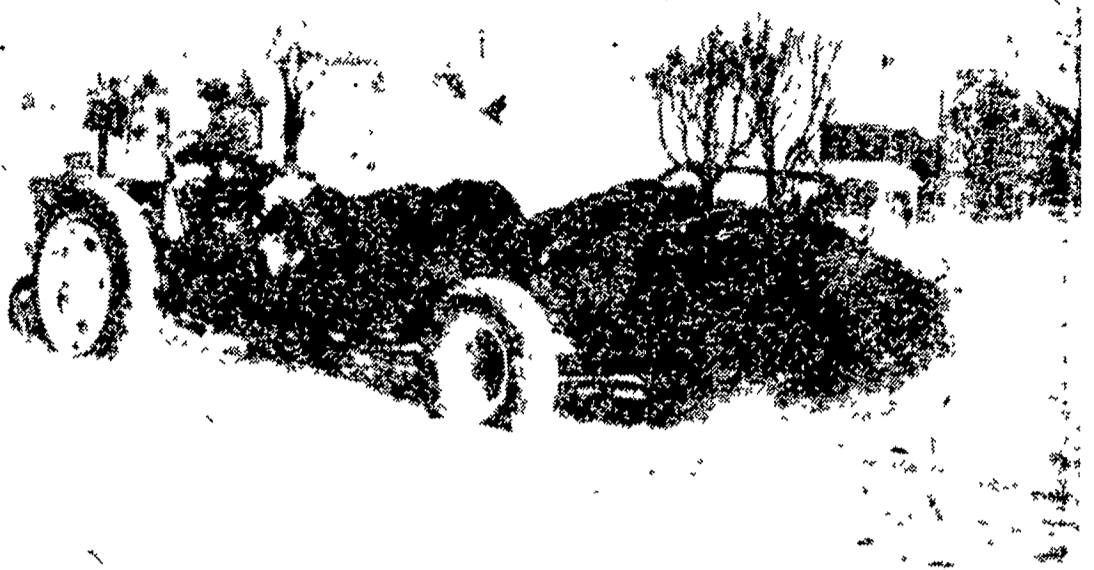
In other business the board elected the following ten members to the Poultry Exchange Committee. Charles Warfel, Conestoga; Eugene Kaesel, Manheim; Lester Frederick, Manheim; Daniel Wood, Columbia; Glenn H. Herr, East Petersburg; Ben Burkholder, New Holland; Steve and Hastings, Lancaster; Robert Harnish, Conestoga; John L. Herr, Manheim; Noah Kreider, Manheim.

Wool Payment Deadline March 1

Wool growers were reminded today that the 1960 program payments, to be made this summer, will be made on wool and unshorn lambs which are marketed before March 31, 1961. This is the closing date for the 1960 program.

Earl Groff, Chairman of the Pennsylvania Agricultural Stabilization and Conservation Committee also pointed out that applications for such payments under the 1960 wool program must be filed before the end of April '61. He emphasized that adequate records on the sales must support the information on the payment applications. For instance, producers' sales records for shorn

(Turn to page 11)



ONE OF THE PROBLEMS facing Lancaster County farmers during the past month has been the disposal of manure. Barn cleaners on many farms have frozen. Manure spreaders freeze and break. Snow makes it almost impossible to spread manure on the fields, but the manure accumulates at the same rate as in better weather and it must be moved. Here Elvin Smoker gets part of the job done on the farm of Raymond Witmer, Willow Street R1, in spite of the snow. —L. F. Photo

Soil Conservation Districts Urge State Soil Surveys

Pennsylvania's soil conservation district have launched an attack to get the state's soil resources surveyed by 1967. Planning commissions, land developers, industry and agriculture urgently need the survey information according to Henry Hackman of Manheim R2, member of the executive council of the Pennsylvania Association of Soil Conservation District Directors.

Hackman said that only one-third of the state's counties have been surveyed. Surveys are published in with maps and technical data and are used to plan recreational

areas, waste disposal, flood prevention and other community development activities, he said.

Robert Lott of Aspers RD, legislative chairman, said the Association will take vigorous action to arouse public interest in completion of the cooperative state-federal soil survey. He also said the district directors will continue their efforts to establish a soil and water conservation research station in Pennsylvania. The research center would carry out experiments to test the effect of land treatment on water supplies and flood prevention.

Hackman reported that a conservation teaching manual is being prepared by the Department of Public Instruction. According to Eleanor Bennett of the Department, the guide will contain information on teaching soil, water, woodland, wildlife & mineral resources conservation. It will be designed for use by elementary and secondary teachers.

Roaring Maples Regal Echo produced 13,990 pounds of milk and 640 lbs butterfat in 365 days on twice daily milking as a 3-year-old. Roaring Maples Dandy beauty, 17,046 lbs milk and 659 lbs butterfat in 336 days on twice daily milking as a 6-year-old. Both are owned by Harold K. Book, Ronks.

GET YOUR CHICKS OFF TO A FLYING START!

WITH

FLORIN 1961 Chick Starter



Get The Full Details On Our Growing Program For Replacement Pullets

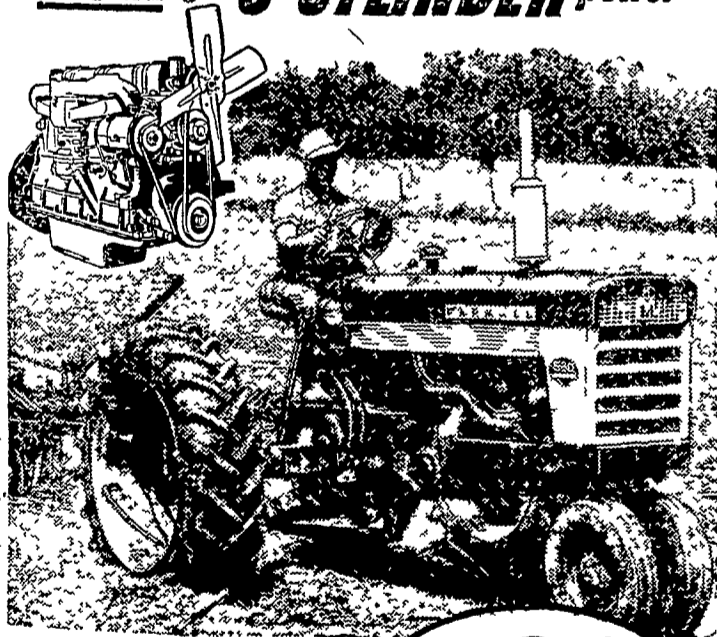
Call Mt. Joy OL 3-2411 Today!

WOLGEMUTH BROS., Inc.
FLORIN, PENNA.

UNMATCHED in TRACTOR FEATURES with EXPERIENCE

International Harvester has been building tractors with these features for a total experience of 185 years!

HOW! quiet, smooth, multi-range 6-CYLINDER power

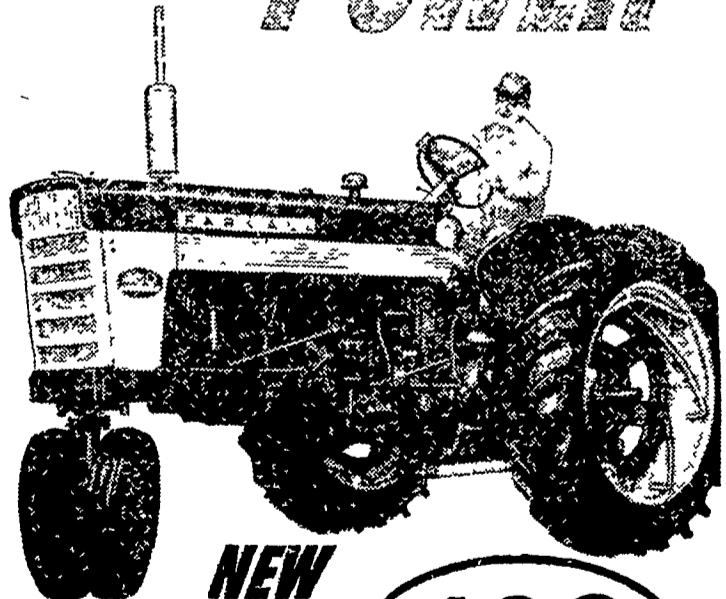


...in the ALL NEW **FARMALL**

560

- Since 1958 Six-Cylinder Engines
- Since 1917 Four-Cylinder Engines
- Since 1958 Multi Range Power
- Since 1958 Variable Speed Engines
- Since 1920 Foot-Operated Clutch
- Since 1958 Large Fuel Tanks
- Since 1920 Sleeved Engines
- Since 1939 Both Brake Pedals Side-By-Side
- Since 1939 High Road Speeds
- Since 1954 Wide Range of Working Speeds with the Super M. T. A.
- Since 1954 Quick On-The-Seat Hitching with the Super C

NEWEST, SMOOTHEST 4-PLOW POWER



NEW 6-Cylinder FARMALL

460



COPE & WEAVER CO.
WILLOW STREET

C. E. WILEY & SON
QUARRYVILLE - WAKEFIELD

McCORMICK FARM EQUIP. STORE
EPHRATA

DAVID KURTZ
MORGANTOWN

C. B. HOOBER
INTERCOURSE

J. B. HOSTETTER & SONS
MOUNT JOY

J. PAUL NOLT
GAP

KAUFFMAN BROS.
MOUNTVILLE



Buy Now on Early Trader's Bonus and get Cash!