

Stock Grading OKed By Most Cattle Growers

Official livestock grading, on a voluntary basis, appears to have been given general endorsement of producers, buyers and dealers, judging from views expressed at a series of seven discussion meetings just held throughout the State, a report from the Pennsylvania State University shows.

These meetings, at Titusville, Neffsville, Tunkhannock, Washington, Chambers

burg, Sunbury and Allentown were authorized by the Pennsylvania Livestock Study Committee. They were conducted by three Penn State University extension specialists, Tom King, and Ben Morgan, livestock, and Lou Moore, marketing, for the committee. Attending were farmers, auction owners, packers, buyers and dealers.

A report on the meetings to the study committee was made by the extension specialists in Harrisburg, Feb. 3. The committee will report later to the State Department of Agriculture who will act finally on the proposal.

Grading, if established, would be done by the Department of Agriculture. The program at first likely would concentrate on veal calves and lambs, then expand to feeder pigs, feeder calves, and possibly also to market hogs. Considerable grading in feeder pigs, feeder calves and market lambs is now being done by the Extension Service on request of producers and buyers.

At the district meetings, Morgan, Moore and King, called attention to the educational value of grading, pointing out that grading gives producers "a good yardstick" on value and quality, and serves as a guide and stimulus for improving their livestock production program.

Wool Payment (From page 5)

wool should show name and address of buyer, date of sale, name and address of producer, net weight of wool sold, and net proceeds to producer after normal marketing deductions

Payments to producers for the 1960 marketing year will follow the same methods employed for the 1959 year. Shorn wool payments will be equal to a percentage of each producer's cash returns from wool sales. The percentage—to be announced later this year—will be that required to raise the national average price received by all producers for shorn wool during marketing year up to the incentive price of 62 cents per

pound. Lamb payments will be made to each producer who sells lambs that have never been shorn. The payments will be at a rate per hundredweight of live animals marketed to compensate for the wool on them on a basis comparable to the incentive payment per pound of shorn wool

Under the 1959 wool program, growers in Lancaster County last year received a total of \$4,342.52 in incentive payments earned under the marketing year ended on March 31, 1960.

A good maternity pen can help prevent troubles at freshening time. The pen should be clean, dry and free from drafts.

BURLING'S CHICKS For Quality Eggs, Meat

CAREY Leghorns again won highest honors for Egg Quality among all entries at the West. N. Y. Random Sample Test. This is in competition with entries from the finest breeders in the country. When it comes to Haugh units—the official measuring stick of egg quality—Carey Leghorns are tops!

AT BURLING'S you have eight top strains and crosses

to choose from... for top quality Eggs and Meat.

For Big Brown Eggs: Merriknoll Sex-Links (Rock x Red); Golden Sex-Links — Harco Red male x Andrews White Rock female.

AND FOR MEAT — Vantress x Cobb White Rock; Cobb's / Strain-Cross White Rocks; Garrison's Cornish Male x Cobbs White Rock female; Burling's New Hampshire and Barred Rocks. Reserve Your Chicks and Started Pullets in Advance. Free Circular. Open Dates.

When you're ready to order, pick up the phone and call Oxford 286 collect.

BURLING'S HATCHERY

BOX F

OXFORD, PENNA.

1941—20th Anniversary—1961

SPRING SALES PROMOTION

Now—Bigger Than Ever!

SAVE - Special Anniversary Prices

MANY—MANY SPECIALS

See Us Today!



Charles B. Hooper

INTERCOURSE

PH. SO 8-3501



Just dropped by to pay our last respects - We saw the crepe on your hen-house door! How did they die? Too bad, Friend, Too bad! Takes A good, strong bird These days - Try HONEGGER LAYERS

J. HOWARD MOORE, 307 East Second Avenue LITITZ, PENNA. Phone: MADison 6-5408

Windle's Hatchery COCHRANVILLE, PA. Phone: ATGlen LY 3-5941

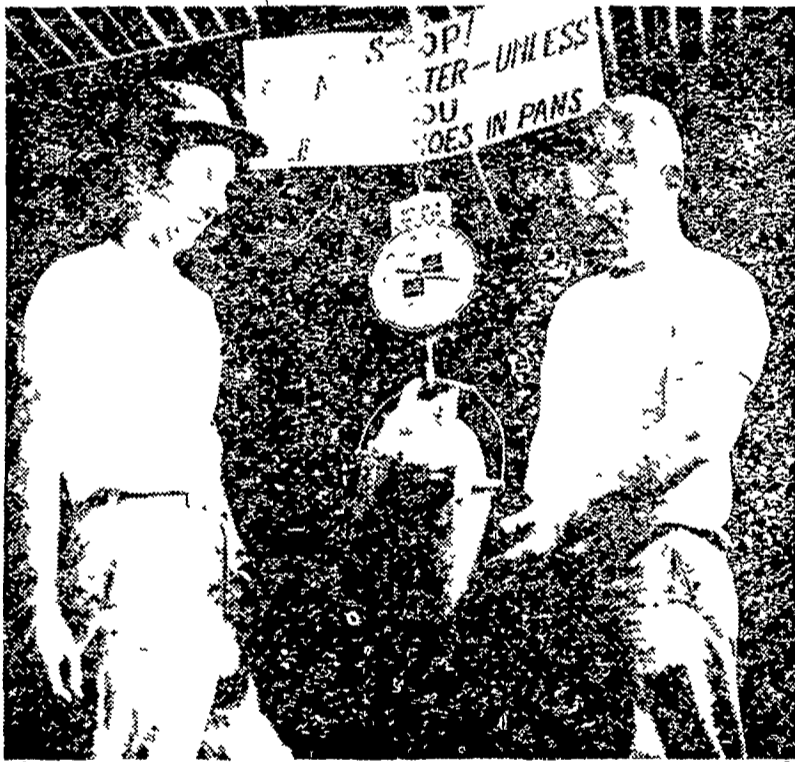
More Proof It Pays to Feed PURINA

261 pigs weaned from 29 first-litter gilts!

Last February, March, and April, 29 first-litter gilts farrowed at Willow Glen Farm, R. D. 1, Strasburg, Pa. These gilts weaned an average of 9 pigs apiece . . . big, healthy pigs which averaged 2 3/4 pounds at birth!

Owners John Henkel and Joe Little have followed the Purina Program since establishing their purchased Yorkshire herd. Twice in 1960 their farm was selected as a public demonstration of efficient hog production in Pennsylvania. Their complete record-keeping system and testing for feed efficiency, rate of gain and carcass evaluation proves they're on the right track for supplying hard-improving seed stock to commercial herds in the state

"From what our records show, we believe Pennsylvania farmers are in an excellent position to cash in on pork production," say these young partners "Good stock and a good feeding and marketing program looks like a sound investment for many years to come"



John Henkel, left, and Joe Little, owners, of Willow Glen Farm, R. D. 1, Strasburg.

WE CAN HELP YOU PLAN A SOUND FEEDING AND MANAGEMENT PROGRAM, BACKED BY PURINA RESEARCH FOR YOUR HERD.

CALL OR VISIT US FOR DETAILS

Blend & McGinnis Atglen

Ira B. Landis Valley Road, Lancaster

John J. Hess, II Intercourse - New Providence

Whiteside & Weicksel Kirkwood

Warren Sickman Pequea

Wenger's Feed Mill, Inc. Rheems

Snader's Mill Mt. Airy

John J. Hess Kinzers - Vintage

J. H. Reitz & Son, Inc. Lititz

Wingenroth's Feed Service Mount Joy

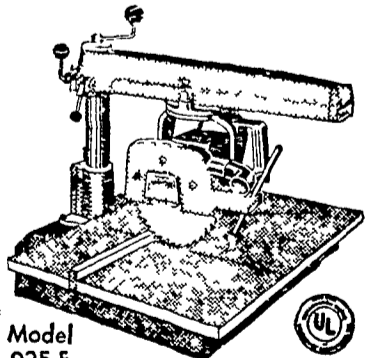
James High Gordonville

John B. Kurtz Ephrata



NOW \$199 DELIVERED

ECONOMY DeWALT POWER SHOP



The low-priced quality DEWALT you waited for!

YOU SAVE \$50. This new DeWalt offers features still not available on other makes selling for 25% more. COMPARE and be CONVINCED.

Come in for a FREE DEMONSTRATION

FARMERSVILLE EQUIPMENT CO.

R. D. 2 EPHRATA NEW HOLLAND Phone EL 4-9221