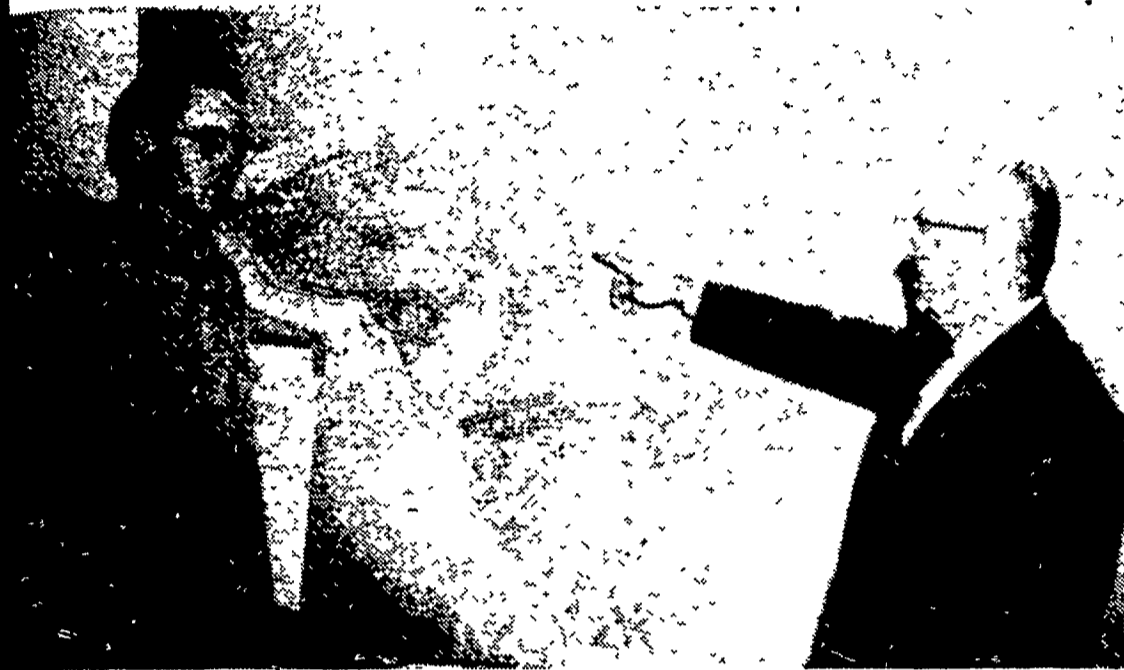


Lancaster Farming

VOL. 6 NO. 10

Lancaster Farming, Saturday, January 28, 1961

\$2 Per Year



HENRY S. MELLOTT, NEWEST MEMBER of the Soil Conservation team in the county gets a briefing on the soils and topography of the county by Martin Muth, Work Unit Conservationist in charge of the local office of the U. S. Department of Agriculture agency. Mellott will work as farm planner for soil and water conservation in the local office. —L. F. PHOTO

Bedford Countian Fills Local Conservation Post

Henry S. Mellott, formerly of Breezewood, Bedford County began work this week with the Lancaster County Soil Conservation Office. Mellott, recently released from service in the army, reported for work on Monday. He will assist the office as a soil conservationist on farms requesting such service. His duties will include farm planning for soil and water conservation. Mellott, after graduation from The Pennsylvania State University in 1958 with a degree in general agricul-

ture, worked for the Soil Conservation Service in Towanda, Bradford County. He had served in that office for six months, making maps, surveying ponds and diversions, and doing farm planning, before being called to military service. Upon his discharge, Mellott returned to the SCS and was assigned to the Lancaster County office. Mellott was reared on a small general farm in Bedford county and graduated from Everett High School. He will take up residence in Lancaster County.

Economist Tells Members Co-Op Reserves Growing

Reserves of \$130,000 were added to the holdings of the Interstate Milk Producers' cooperative last year, members of District 11 were told Thursday at the annual banquet of the group. Dr. Paul E. Hand, Economist from the cooperative's staff, told the 260 members

in attendance at the Quarryville Methodist Church, the reserves will be rotated and returned to the members at the end of seven years. Dr. Hand reported that the number and volume of the bulk hauling contracts negotiated by the cooperative had been expanded during the year. This represents a permanent saving to members, he said. He also commented on the work of Interstate in securing a price increase of 10 cents per hundredweight over the 1960 price through Federal Order 61. The increase will be in effect through the first nine months with a possible 30 cents increase during the last three months of the year, he said.

FARM CALENDAR

Jan. 30—7:30 p. m. - County Future Farmers meet at Cocalico High School, in Denver
8:00 p. m. - Southern Tractor Club meets at Wenger Implement Company, Buck
Jan. 31—8:00 p. m. - Northeastern Tractor Club meets at the International Equipment Co., Ephrata.
Feb. 2—8:00 p. m. - Solanco Young Farmer's meeting in the High School, Quarryville. Steven Spencer, Dairy Extension Specialist will demonstrate proper milking procedures.
7:30 p. m. - Meeting of the directors of the Lancaster County Poultry Association at the Poultry Center.
Feb. 6—1:00 p. m. - Meeting of the Lancaster County Celery Growers at the farm of Amos Funk, Millersville R1.
Feb. 6-7-8—Small fruit conference at Yorktowne Hotel, York. Contact County agent for details.

John Kitch, Reinholds R1, district forester, was promoted in grade by the Pennsylvania Department of Forests and Waters Tuesday. The promotion was one of 25 in the state's 20 forest districts, Secretary Maurice K. Goddard announced. The program of promotion and transfers throughout the state is planned to assist small woodlot owners to grow trees as a crop, Goddard said. The program is aimed at increasing timber sales from state forests by 50 per cent. There were two million acres in state owned forests and 1960 sales were nearly \$700,000. Goddard said the promotions will cost the state nearly \$15,000 per year. Kitch is presently president of the Conestoga Valley Association.

Gerald H. Hess Is Appointed By PSU Extension

An Elizabethtown R3 resident has been appointed to the Pennsylvania State University Extension Service Staff as an assistant County Agent, it was announced this week.

Gerald H. Hess, who graduates from PSU today, will serve in Northampton County beginning Feb. 1, according to Extension Service Director, Dr. H. R. Albrecht.

Hess will be associated with County Agent Samuel D. Lewis in the Easton office. Hess, the son of Mr. and Mrs. Paul Hess, is a graduate of Elizabethtown high school. He majored in Animal Husbandry at PSU.

While at the University he was a member of the livestock and meats judging teams and the Block and Bridle Club.

He is married to the former Helen Graybill, daughter of Mr. and Mrs. J. Homer Graybill, Manheim R4. Mr. and Mrs. Hess have a one-month-old daughter.

Dist. Forester John Kitch Is Promoted

John Kitch, Reinholds R1, district forester, was promoted in grade by the Pennsylvania Department of Forests and Waters Tuesday.

The promotion was one of 25 in the state's 20 forest districts, Secretary Maurice K. Goddard announced. The program of promotion and transfers throughout the state is planned to assist small woodlot owners to grow trees as a crop, Goddard said.

The program is aimed at increasing timber sales from state forests by 50 per cent. There were two million acres in state owned forests and 1960 sales were nearly \$700,000.

Goddard said the promotions will cost the state nearly \$15,000 per year.

Kitch is presently president of the Conestoga Valley Association.

Broiler Prices Higher In 1960, Report Shows

Broiler prices last year averaged almost a half cent higher than during 1959, but did not reach the high average price of 1958, Lancaster County poultrymen were told in a report at their annual meeting Monday night at the Poultry Center.

Prices during 1960 averaged out to 1835 cents for broilers as compared with the yearly average of 1787 for the year previous. The 1958 figure was reported to have been 1980.

Volume of broilers sold declined from 4,533,460 head in 1959 to 3,819,945 head last year, but the increase in the volume of heavy fowl, leghorn fowl and roasters made up a part of the difference.

Total volume during 1960 was 4,544,388 head compared with 5,099,060 head the year before.

Daniel Good, treasurer, in reporting on the finances of the organization said the original mortgage on the poul-

try Center has been reduced to \$19,000.

Good also reported listing fees during the year brought in \$10,278.62, the largest single source of income. Another large source of income was the Saturday Barbecues at the Poultry Center which brought in a total of \$6,833.55.

The report listed total receipts of \$22,198.18 against disbursements of \$21,371.52. Cash balance on hand as of January 1 was \$1,684.97.

Five directors were re-elected to three year terms and one new director was elected.

Returned to the board were Daniel K. Good, Columbia R1, a poultry buyer; C. Eugene Cassel, Manheim Feed Dealer; John Longenecker, Elizabethtown hatcheryman and grower; Lewis Mortenson, Wabank Road, Lancaster, and Roy Erb, 118 Kreider Ave., Lancaster, an egg producer. The new director is Glenn G. Herr, owner of a breeding flock at Lancaster R7.

Speaker of the evening was Professor R. W. Schlosser, Elizabethtown College.

The program was directed by Mark Myer, president of the assn.

Roy B. Herr Honored By Poultrymen

Roy B. Herr, Pennsylvania Poultryman of the year in 1959, was honored by The Lancaster County Poultry Association Monday night.

Herr was one of the founders of the association and served as president for 12



ROY B. HERR, LANCASTER R7, shown at the door to his incubator was honored Monday night by the Lancaster County Poultry Association. Herr served the association as director for 27 years and was presented a plaque upon his retirement from the board. —L.F. PHOTO

years. He was vice president during the first year of operation and moved to the top spot when the organization elected officers for the second year. He has also served as president of Pennsylvania Poultry Federation.

Herr, who operates a White Leghorn breeding farm at Lancaster R7, has been in the poultry business in the county for about 40 years.

During the last 27 years he has served on the board of directors of the Lancaster County Poultry Association. Upon his retirement this week, the association presented him with a plaque and a life membership in the group.

Presentation was made by Jay Greider, Mount Joy R1, a member of the board of directors.

FIVE - DAY WEATHER FORECAST

Saturday - Wednesday

Temperatures during the next five days will average about eight degrees below the normal range of 24 at night to 39 in the afternoon. Cold weather is expected to continue over the week end with some moderation Monday and a return to colder temperatures again about Tuesday or Wednesday. Precipitation may total about 0.4 inches melted falling mainly as rain or snow Monday or Tuesday.