

HITS 75-PERCENT MARK ● **10,000 Bushels**
(From page 7)

Animal disease eradication officials of the USDA's Agricultural Research Service now report that more than 75 percent of all counties in the U. S. are participating in the brucellosis eradication program. This mark was reached on October 14 when Marion County, Kansas, began a complete cattle testing program to eliminate this costly cattle disease. If additional counties continue to join the eradication program at the present rate of about one percent a month, it is estimated that every county in the U. S. could be participating in two years' time. USDA officials further point out that all States can be certified by the end of 1966 if this is the will of the livestock industry in all areas. It is only a question of time, they say, until this country is completely free of brucellosis and undulant fever.

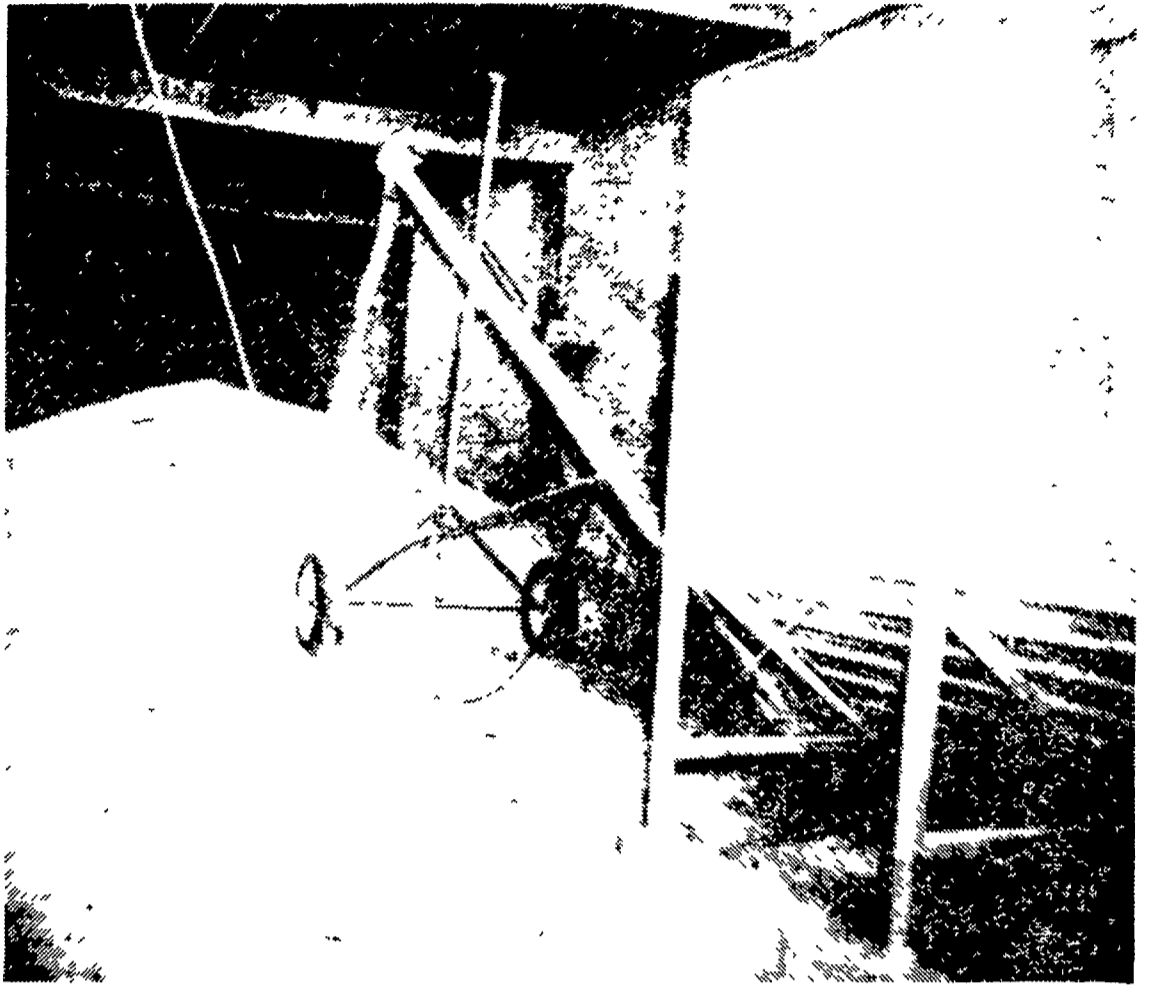
each floor. When time comes to remove the corn from storage, the elevator hopper will be placed in a drag pit which runs the full length of the building. Gravity will move a considerable portion of the grain to the elevator hopper and the rest can be pushed into the hopper without lifting.

Part of the corn crop on the farm was stored in more conventional cribs and on the ear, but much of the ear corn was dried artificially. Noah Kreider, Jr. said they noticed considerable difference in the moisture content between variety numbers of the same brand name hybrid. Because some of the varieties were not dry at picking time, artificial heat was used to bring the crop to safe storage levels of moisture.

To paraphrase a well known poet, "It takes a heap o' heapin' to heap ten thousand bushels."

Lancaster Farming advertising brings results.

10,000 Bushels Of Corn



NINE OR TEN THOUSAND BUSHELS is the estimate of the amount of dried corn in this pile. Harvested in the field with a picker-sheller the corn was dried in three-hundred-bushe batches and elevated into the potato bins on the Noah Kreider farm at Manheim R1. The shelled corn in this pile is part of the yield from the 150 acres of corn farmed near Tower City, Pa by the partnership of Noah Kreider, Sr., Noah Kreider, Jr., Richard Kreider, and Leon Schnupp, son-in-law of Noah Sr. —L F Photo

Shop Early In New Holland For Your Christmas Gifts

Stores will be open Thursday, Friday, Saturday, Monday, Tuesday, Wednesday, Thursday, and Friday, December 15, 16, 17, 19, 20, 21, 22 and 23, in the evenings, and closed Saturday evening, December 24, at 5:00 p.m.

New Holland Business Assoc.

KILL RATS!
Use
RAT KAKES!

American Flyer Remote Control Electric Train
With Real 2-Rail Track and Transformer



ALSO STOCK CAR RACES

Also Lionel and HO Trains

Come in and see the little fellows work. Plasticville items to help complete your layout. Special prices on \$5.00 Plasticville Purchases.

Train Sets and Accessories

ALL TRAIN SETS - - - 25% OFF

HO GAUGE TRAINS - - - 25% OFF

COMPLETE LINE OF ACCESSORIES . . . Everything needed to build a railroad system can be found here . . . Houses, Yards, Animals, Tracks, Cars, Stations, Grass, Dirt and Gravel, Scenery Paper, Tunnels, Transformers, Plasticville Houses, and many other accessories.

STRAIGHT OR CURVED TRACKS —

027 Gauge 15c ea. 0 Gauge 20c ea.
S-AM Flyer 22c ea. HO Gauge 18c ea.

GROFF'S HARDWARE

NEW HOLLAND

Phone EL 4-0851

New Location For

FRIGIDAIRE APPLIANCES

109-111 E. Main St. NEW HOLLAND

New 1961 Products For You!

STOP IN AT OUR NEW LOCATION

Meet Frigidaire's Appliances . . . Designed With You In Mind.

Many Specials at Only
\$199.95

SPECIAL DEALS FROM 6 P. M. TO 10 P. M. EACH DAY.

Dishwashers - \$199
Disposal Units - \$54.95

Door Prizes Just For Registering.

Easy Terms On Purchases. Pay Next Year.

M. S. SENSENIG

NEW HOLLAND, PA.

PHONE EL 4-0891