

A CARCASS CHAMPION ON THE HOOF IS THIS 945 pound angus shown by Fred Frey, Quarryville R2. The Old Home Manor-bred steer was chosen grand champion of the carcass classes in the on-foot judging on Monday. On Wednesday, the carcass was judged the reserve champion in the on-rail competition. —L. F. Photo

● **Country Girl**
(From page 1)

for their share of rosettes as well. At the 1958 Exposition Wesley Mast exhibited the junior champion while Emma Mae, Paul and Rhoda swept every other angus class.

Another county cattle showman placed an angus in the purple as he pulled down reserve breed honors. Fred Frey showed a son of O Bardolermere 53rd to the runner-up spot in the open competition after a half

brother of the Old Home Manor-bred steer had taken the on-foot top award in the carcass steer classes.

On Wednesday the Frey carcass steer was named reserve champion (on-rail) at the Allentown dressing plant where the 945 pound animal was slaughtered. The steer was one from a carload of steers Frey purchased from the Homer City, Pa. farm in April and was a half brother of the reserve champion carcass steer shown by Frey at the show last year. Following are county placings in both the junior and open steer classes.

acings in both the junior and open steer classes.

JUNIOR STEER SHOW
Angus

Junior yearling - 1, Arlene Long, Manheim R4; 4, John J. Good, Manheim R1; 6, Wesley Mast, Elverson R2; 7, Emma Mae Mast, Elverson R2, 10, Darvin Boyd, Ephrata R1; 11, Rhoda Mast, Elverson R2; 12, John Zimmerman, Reinholds R1 13, Nancy Louise Rohrer, Lititz R3; 15, Darvin Boyd, Ephrata R3; 16, Mary Jane Herr, Refton.

Summer Yearling - 1, Emma Mae Mast (C); 5, Wesley Mast; 9, Joyce Nolt, of Reinholds R1; 11, Glen Foreman, Manheim R3; 12, David Zimmerman, Reinholds R1; 15, Marlin Cassell, Manheim R1; 18, Darvin Boyd; 19, Rhoda Mast; 20, Rhoda Mast.

Hereford

Junior Yearling - 1, John Henry Hess, Manheim R2; 5, Rhoda Mast; 7, Willis Hackman, Elizabethtown R3; 8, Thomas C. Daugherty, of Kirkwood.

Summer Yearling - 3, Wesley Mast; 4, Rhoda Mast; 5, Richard Hosler, Manheim R4; 9, Mary Jane Herr; 10, Emma Mae Mast; 11, Virginia Wivvell, Columbia R2.

Senior Calf - 2, Mary Jane Herr; 4, Fred Linton, Quarryville R2; 5, John Henry Hess.

Shorthorn

Summer Yearling - 4, Kenneth E. Miller, Manheim R5; 5, Robert Hosler, Manheim R4; 6, Glen Foreman.

Senior Calf - 2, Darvin Boyd.

Open Class Steers

Grand Champion Steer Show—Emma Mae Mast
Grand Champion Angus—Emma Mae Mast.

Reserve Champion Angus (Open Class)—Fred Frey
Junior Yearling — 1, Fred Frey.

Summer Yearling—7, Samuel F. Long, Elizabethtown R3; 9, Paul Mast, Elverson R2.

KILL RATS!
Use
RAT KAKES!

Increase your egg profits—

ORDER
H&N MARK II
LEGHORN PULLETS
From **FLORIN FARMS**

companion to the famous H & N Nick Chick Leghorn . . . America's all-time profit Champion.

* **LARGE WHITE EGGS** at an early age plus famous H & N Breeding for high production, high livability and superior egg quality—Vitality important now to qualify for USDA's "Fresh Fancy" programs.

Free descriptive circular. Write or phone now

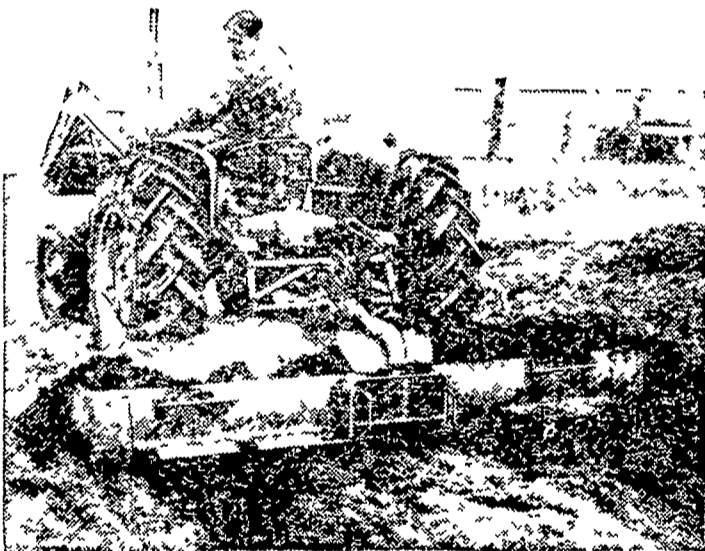
FLORIN FARMS, INC.

POULTRY FARM & HATCHERY

MOUNT JOY, R. D. #1

OL 3-989

Clean lots mean
FASTER GAINS



Keep your feedlots CLEAN. That's the way to fast, efficient beef gain; cleaner, higher milk production. Put in an Allis-Chalmers scraper and loader . . . then watch power take over . . . watch how fast your increased livestock production will pay for this rear-mounted blade.

See us for new, big-capacity Allis-Chalmers chore power.

Ask us about the Allis-Chalmers plan to finance your time payment of farm equipment.

ALLIS-CHALMERS 
SALES AND SERVICE

- | | |
|--------------------------------------------------|----------------------------------------------|
| L. H. Brubaker
Lititz, Pa. | Nissley Farm Service
Washington Boro, Pa. |
| N. G. Myers & Son
Rheems, Pa. | L. H. Brubaker
Lancaster, Pa. |
| Mann & Grumelli Farm Serv.
Quarryville, Pa. | R. S. Weaver
Stevens, Pa. |
| Snavelys Farm Service
New Holland, Pa. | |

Feed Your Layers

MASTER MIX

EGGLAC PELLETS

The *Original* Output Booster

● FEED 2 TO 3 LBS. PER 100 HENS DAILY ●

Master Mix Egglac Pellets Are Highly Nutritious And Extra Palatable . . . Made Over An Exclusive Formula And Proved By Millions Of Layers.

EGGLAC PELLETS

- STIMULATE EXTRA FEED CONSUMPTION
- INCREASE PRODUCTION & HATCHABILITY
- PROMOTE BETTER FLOCK HEALTH

See one of these Master Mix Dealers Today

Eby's Mill
LITITZ

Ross H. Rohrer & Sons
QUARRYVILLE

Hempfield Mills
MANHEIM

L. J. Denlinger Co.
PARADISE

