

Older People Accident Prone

Harrisburg—Older members of farm families should take extra precautions when operating machinery, William Henning, State Secretary of Agriculture said recently. He said that statistics show that older men and women are more likely to become involved in fatal accidents with machines than are the youngsters. He added, however, that these statistics do not include crippling injuries which might change the accident rate situation. "A major hazard when op-

erating farm machines is that the operator becomes overtired and careless. Just as when driving an automobile for a long period, a break should be taken every hour or two. This will increase the efficiency of the operator and will reduce accidents," Secretary Henning said.

He said that while modern machines have taken much of the drudgery out of farming, and while they have increased the productive ability of the Pennsylvania farmer, they can bring tragedy and

financial ruin to the farm family if the bread-winner is killed or seriously injured by improper operation of one of his tools.

"Other farm tools such as ladders, mauls, and axes should be checked periodically to insure they are safe to use," Henning added.

The Pennsylvania Rural Safety Council has as its purpose the education of Pennsylvania farm families and rural residents in safe farming and living practices.

Don't shift from corn silage to alfalfa silage without supplementary feeding to make up for the lower energy in alfalfa.

● Capons

(From Page 1)

erman, Reinholds; Mary Heisey, Sheridan; John and Joseph Schantz Ephrata R1 and Eberhard Wessendorf, an exchange student from Austria now living with the Schantz family.

Capons purchased from one of the club members was served to the Rotary club members and their guests.

Carl Dossin, extension poultry specialist from the Pennsylvania State University was judge and speaker of the evening.

● Accidents

(From page 1)

clear the intake section of the corn picker without first turning the machine off.

The cornpicker, he said, can take in 32 feet of material a second. When the intake section becomes clogged with fodder the operator many times yanks the fodder out to clear the machine without first turning off the power takeoff.

The basic trouble is that the operators get accustomed to the cornpicker and do not pay as much attention to the dangers of the machine as they should.

When the operators get accustomed to clearing a clogged machine they sometimes become less safety-conscious and accidents result. The safe thing is to turn off a cornpicker before ever trying to clear it, Cutler said.

Other Protein Need When You Feed

SPECIAL TANVILAC

Feeders Say . . .
"The Most Economical Feeding Plan of All"

No trouble with scours or cattle going off feed. You'll be more than satisfied with our feeding program for you'll get healthy stock, quick gains at low cost. Remember there's a FIELD LOT PROVEN TANVILAC CULTURE PRODUCT FOR EVERY FARMING PURPOSE.

ONLY 1/3 LB. SPECIAL TANVILAC PER HEAD PER DAY WITH GRAIN AND CHARGE — GET BIGGER PROFITS

FOR MORE PROFITS—MAIL COUPON TO THE TANVILAC COMPANY, INC. 67th and Corning Aves., Box 96, Highland Park Station, Des Moines 13, Iowa. Please Send Me Additional Information about Special Tanvilac.



C. O. NOLT

LOCAL DISTRIBUTOR

IN-HAND

Phone Lanc. EX 7-0751

BURLING'S CHICKS For Quality Eggs, Meat

CAREY Leghorns again won highest honors for Egg Quality among all entries at the West. N. Y. Random Sample Test. This is in competition with entries from the finest breeders in the country. When it comes to Haugh units—the official measuring stick of egg quality—Carey Leghorns are tops!

AT BURLING'S you have eight top strains and crosses

to choose from . . . for top quality Eggs and Meat.

For Big Brown Eggs: Merriknoll Sex-Links (Rock x Red); Golden Sex-Links — Harco Red male x Andrews White Rock female

AND FOR MEAT — Vantress x Cobb White Rock; Cobb's Strain-Cross White Rocks; Garrison's, Cornish Male x Cobbs White Rock female; Burling's New Hampshire and Barred Rocks.

Reserve Your Chicks and Started Pullets in Advance. Free Circular. Open Dates.

When you're ready to order, pick up the phone and call Oxford 286 collect.

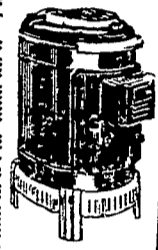
BURLING'S HATCHERY

Box F

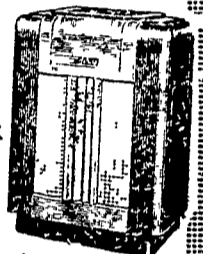
Oxford, Penna.

Try a Classified.

NOW THE BEST WOOD HEATERS ARE BETTER THAN EVER!



15 MODELS 15 PRICES



NEW EXCLUSIVE FRONT DOOR FEED

4 NEW COLORS

in cabinet and cabinette

See proof

OF ASHLEY'S CLAIMS TODAY.

ASHLEY

24 HOUR THERMOSTATIC DOWNDRAFT WOOD HEATERS

KAUFFMAN'S HARDWARE

201-207 E. MAIN STREET NEW HOLLAND Ph. EL 4-0951 Open Thurs. & Fri. 'til 9

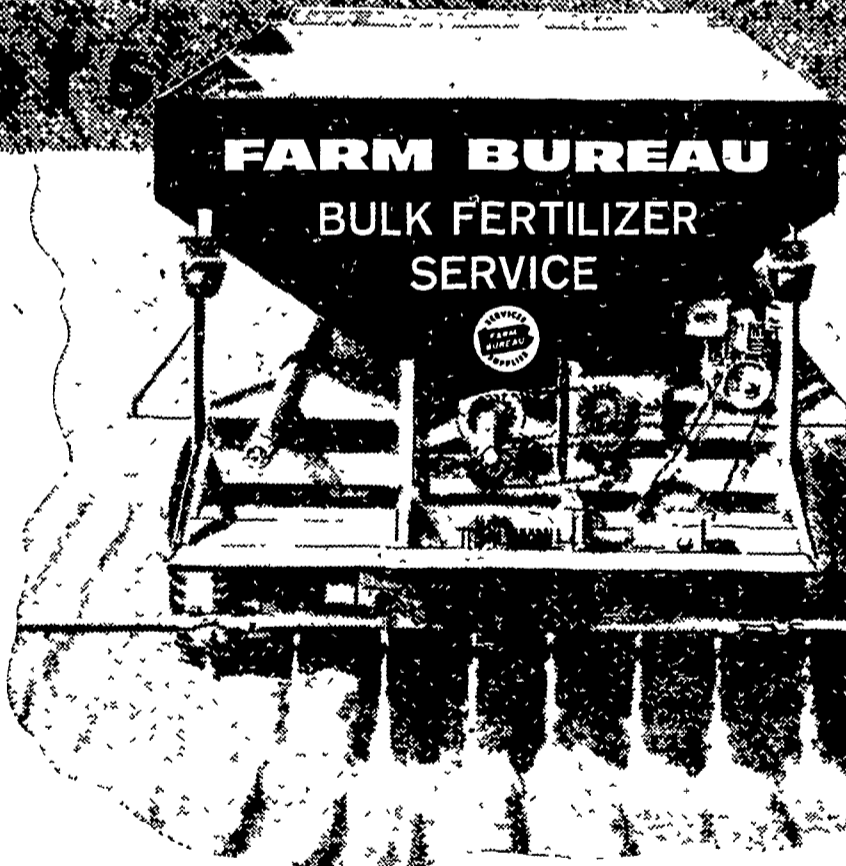
NOW a new service to farmers

WE DO THE WORK!

YOU SAVE:

MONEY - TIME & LABOR, TOO!

Farm Bureau will spread your Fertilizer with modern, accurate equipment and trained personnel. Spreading is adjusted to fit your soil needs . . . at any rate per acre.



Manheim Lancaster
MOhawk 5 2466 EX 4 0311
Quarryville New Holland
STerling 6-2126 ELgin 4-2146

Control Alfalfa Weevil & Spittle Bug

Let us apply GRANULAR DIELDRIN while we spread your Fertilizer. Our modern spreader will do the job accurately.

FIGURE YOUR NEEDS . . . place your order today. Prompt and courteous Spreading Service and/or delivery in bags.

DEEP KERNELS

One Reason Why More Farmers Plant **DEKALB** than any other brand



Plant **DEKALB SEED CORN**

P. L. ROHRER & BRO., INC.

SMOKETOWN, PA. Ph. Lanc. EX 7-3539