

Crop Summary

Yield Prospects Are Good

Harrisburg — Prospects for bumper corn crop continue to improve with little soft corn to be harvested, the Pennsylvania Crop Reporting Service predicted Tuesday in the last of its weekly crop and weather summaries for this crop year. The Pennsylvania Department of Agriculture based its prediction on the fact that much of the corn acreage this year was planted late and would not have reached proper maturity before being killed by frost. However, light frosts that have occurred to date have been from one to three weeks later than normal and have been heavy enough to kill corn in only a few scattered localities.

Harvest of corn is increasing and during the past week northern tier county farmers started moving into the fields with corn pickers. Potato harvest in most areas is past its peak. Conditions are excellent in western and central areas, and in eastern counties the ground is dry enough on higher fields to permit potato digging. Most fall-seeded barley is sprouted and growing normally. Wheat seeding is general and conditions are very good with the exception of the northwest where barley and wheat are emerging only in low damp spots. Old hay stands are going into winter in fair condition and new seedings are good.

The pasture season is slowly coming to an end with few pastures providing adequate good feed.

DUCKS GROW FAST

Ducks are about the fastest growing domesticated animals, reports H H Kauffman, extension poultry specialist. They weigh slightly over one-tenth of a pound when hatched and increase their original weight 60 times during the first eight weeks. If the calf from a beef animal would grow in the same manner, it could weigh about 2 1/4 tons at eight weeks.

START SILAGE FEEDING

Richard S Adams, extension dairy specialist, suggests dairymen planning to feed grass silage should feed it early if they have a fall freshening herd. He believes amounts of both hay and silage fed should be gradually increased until cows are on full-barn feeding. A gradual change-over keeps stress at a minimum and helps maintain both production and health.



FOR MORE PROFITS, PLANT AMERICA'S GREATEST HYBRIDS And For Top Yielding Clover, Alfalfa, Oats, Sow.

HOFFMAN SEEDS

SEE YOUR LOCAL HOFFMAN SALESMAN OR Phone Landisville TW 8-3421

FLORIN LAYING FEEDS

ARE DESIGNED FOR YOU, THE COMMERCIAL POULTRYMEN WHO ARE STRIVING FOR:

- 1. High Consistent Production
- 2. Superior Egg Quality
- 3. Excellent Feed Conversion
- 4. Low Cost

Put Your Laying Flock On—

FLORIN LA-MOR

OR

FLORIN EGG-PRODUCER



Call Mount Joy OL 3-2411

TODAY AND GET THE FULL DETAILS.

Wolgemuth Bros., Inc. FLORIN, PENNA.

Bulk Spreading Service

FERTILIZER and LIMESTONE

DEALERS FOR

- Davco "Granular" Fertilizer
- Webb Super-Gro Balanced organic fertilizer
- Rock Phosphate Phosphorus
- Green Sand Potash

If you need fertilizer — call us—

SMUCKER BROS.

BIRD-IN-HAND, PA.

Leola OL 6-2229

VENTILATION!

For the most economical ventilation for poultry and dairy HAVE YOUR BARN AIR-CONDITIONED BY

Vent-O-Matic

We will engineer, install and guarantee satisfactory ventilation.

Write or call for free estimate.

HIESTAND, Inc.

MARIETTA R. D. 1

Phone HA 6-9301

FOR QUALITY EGGS

AT LOW FEED COST



Buy RED COMB EGG MASH, Today!

RED COMB's policies give you a quality feed at low cost. This fact combined with its good palatability, freedom from dust, and bright appearance makes it your best buy!

Feed RED COMB EGG MASH Equally With Scratch for Top Quality Eggs With Excellent Flavor.

For further information see...

Joseph M. Good & Sons LEOLA — QUARRYVILLE



EASY BUDGET PLAN!

You pay in equal installments spread over the year —avoiding big bills in cold months when oil consumption increases.

GARBER OIL CO.

105 Fairview St. MOUNT JOY, PA. Ph. OL 3-2021

SAY SIR!

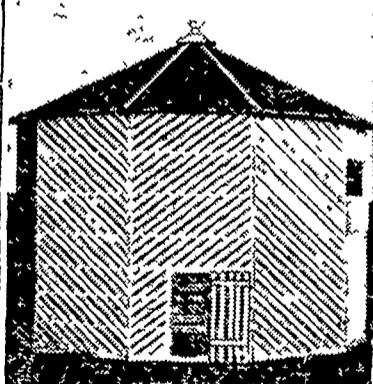


Have you tried the famous Shaver Star-cross Leghorns?

My daddy says they're the best there is! Greider Leghorn Farms sells lots of them. The phone number is Mount Joy OL 3-2455.

Better call them real soon.

NEW IMPROVED HONEGGER CORN CRIB



- Less Spoilage
- Low Cost
- Complete with Floor and Skids
- Easy To Erect (One day)
- Sizes 850 to 2,000 Bushels Ear Corn

ASK YOUR HONEGGER DEALER TO SHOW YOU THIS CRIB

R. H. LAMBERT 215 South 8th Street AKRON, PENNA. Ph. Ephrata RE 3-4702