

At Lancaster Yards Active And .50 Higher

CATTLE 5200 compared with 5792 last week. Supply included 35 percent slaughter steers, 55 percent stockers & feeders. Trading was moderately active. Slaughter steers sold steady to 50 higher. Cows 50 lower. Bulls 25-50 lower. Stockers and feeders steady.

Three loads Prime 1032-1205 lb slaughter steers sold at 27.00, several loads and lots high-Choice to mostly Prime 1027-1239 lbs. ranged from 26.50-26.80, the bulk of the Choice grade steers made 26.25-26.25. Good to low-Choice 23.00-25.25, Standard down to 21.50. Load Choice 804 lb. heifers brought 23.25. Cutter and Utility cows sold for 14.50-16.50, Canners and low-Cutters 13.00-14.50. Utility and Commercial bulls ranged from 19.50-22.00.

Good grade bulls 22.00-24.00. Good and Choice 600-800 lb. stock steers made 23.00-25.25, two loads high-Choice 546 lbs 27.20, and a load Choice 500 lbs. reached 27.50. Medium and Good 21.50-23.50. Medium and Good 800-1050 lb feeder steers ranged

from 20.00-23.00 with several loads 800-850 lbs. high-Good at 23.00.

CALVES: 700 compared with 618 last week. Trading was moderately active. Vealers steady. Good and Choice vealers were 26.00-31.00. Choice and Prime 31.00-35.00, and a few reached 36.00-37.00. Standard and low-Good 20.00-26.00. Utility down to 15.00.

HOGS: 1450 compared with 1653 last week. Trading was moderately active. Barrows and gilts sold at steady rates compared with last week. (Turn to page 3)

Chicago Cattle Smallest Run Since April

CHICAGO Local receipts sharply curtailed being 30 per cent below last week and the smallest since early April. Between 70 and 75 per cent slaughter steers, 15 and 20 per cent heifers and 5 per cent (Turn to page 12)

Vintage Livestock Steers Steady To 50 Higher

Compared with last week's market, slaughter steers were steady with weights over 1250 lbs. 25-50 higher at the October 5 auction at Vintage. Cows and bulls steady. Receipts included 448 head of cattle. Bulk of the Choice grade slaughter steers 25.00-26.25, few lots 950-1250 lb. weights 26.35-26.75. Good to low-Choice 23.00-25.50, Standard 21.00-23.00.

Cutter and Utility cows 15.00-16.00, Canners and low-Cutters 13.50-15.00. Utility & Commercial bulls 19.50-22.50. Good grade bulls 22.00-24.00.

CALVES: 454. Vealers 1.00 higher. Good and Choice vealers 26.00-32.00, Choice & Prime 32.00-36.50, Two head 40.00, Standard and low-good 19.00-26.00, Utility down to 16.00.

HOGS: 133. Barrows and gilts steady. U. S 1-3 grade 200-228 lb. barrows & gilts 19.10-19.35, lot U. S No. 214 lbs. 20.85, lot Medium 140 lbs. 18.10.

SHEEP: 38. Few lots of slaughter lambs steady at Choice 80-100 lb. woolled 18.00-20.00.

New Holland Heavy Cattle Higher

Cattle receipts at the October 6 auction at New Holland included 1024 head. Compared with last week's market, slaughter steers were steady with weights over 1,200 pounds 50 higher. Cows weak, utility and commercial bulls 25 lower. Good grade bulls were steady.

Several lots of high choice and prime 1,000 to 1,250 lb. slaughter steers made 26.50 to 26.85. The bulk of the choice steers were 25.25 to 26.35. Choice and low good made 23 to 25.50 with utility selling down to 21.

Several lots of good and choice 800 to 1,050 heifers brought 21-25. Cutter and utility cows were 14.75-16.25 with cannery and low-cutters at 13-15. Utility and commercial bulls made 19-22.50 while good grades sold at 22-24.35.

Several lots of medium 800 to 1,050 pound feeder steers made 18.50 to 20.60. A load of good grade 400 pound stock steer calves brought 25.00. Calves 386, Vealers weigh-

ing over 130 pounds 1.00 to 2.00 lower. Live weights were 100 high. Good to choice vealers made 25 to 32. Choice and prime brought 32 to 35 with a head going to 36 and Standard and low good 19-25, with utility selling 16-18.50.

At the October 5 sale dairy cattle, all cows very slow with all kinds including fresh cows, selling from \$15 to \$25 per cwt. Receipts included 151 cows, seven stock and five stock heifers.

Fresh cows, Holsteins \$325-400, Guernseys - 270, other breeds - \$200. Bulls - \$110-160, Heifers \$65-140.

Horses continued steady the October 3 sale with mules continuing to go to killer trade. Receipts 226 head.

Ponies, mares - \$90. Geldings - \$45-110. R. horses - \$100-170. Draft horses - \$90-140. Killers - to 8 cents.

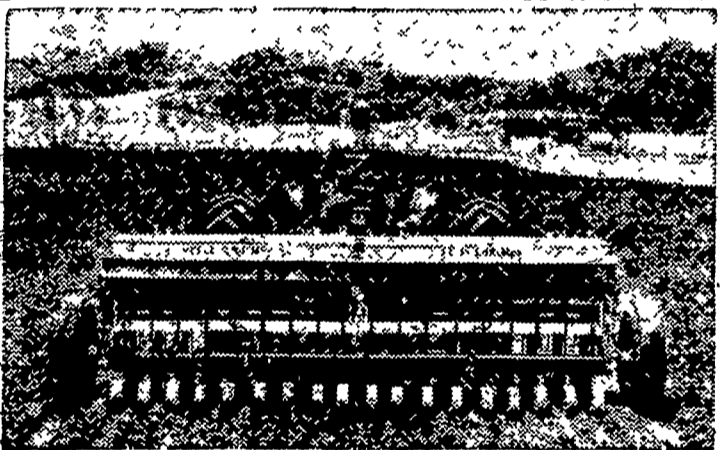
Mercena Hillmac Ormley 3916202 owned by Vernon R. Umble, At produced 13,757 lbs. and 530 lbs. butterfat in days on twice daily milk as a 5-year-old.



New
Musser Leghorn
FARMS
PULLET



R.D. 1, MOUNT JOY, PA.



New! EXPANDED! ALL-CROP Drill Line

Drill more acres a day and get a good stand — whatever your farming method. With ALL-CROP drills, torsion spring control assures even depth. Zero pressure press wheels are available to give proper seed contact with soil.

Standard drills have divided hopper . . . feature separate band placement of seed and fertilizer. Grass seed attachment, too!

New models include plain drills with over-size, single-bin hoppers that hold up to 19 bushels of grain . . . require fewer stops for refilling. One 16-run model has 10-inch disc spacings . . . others 7-inch.

Come in . . . let us show you an ALL-CROP drill . . . made to fit your farm.

ALL CROP is an Allis Chalmers trademark

ALLIS-CHALMERS 
SALES AND SERVICE

L. H. Brubaker Nissley Farm Service
Lititz, Pa. Washington Boro, Pa.

N. G. Myers & Son L. H. Brubaker
Rheims, Pa. Lancaster, Pa.

Mann & Grumelli Farm Serv. R. S. Weaver
Quarryville, Pa. Stevens, Pa.

Snavelys Farm Service
New Holland, Pa.

DARBY LEGHORNS are GREAT LAYERS

Proved by national contests for many years and also right out on the farm.

Our Darby Breeders are Keener owned and managed on our own farms. Our chicks are Keener priced, no royalty paid.

Yes! Your dollar value is increased by buying Darby Chicks from our Associated Hatchery

CALL EMPIRE 7-3246

The Keener Poultry Farm

R. D. 1 ELIZABETHTOWN, PA.

FLORIN

LAYING FEEDS

ARE DESIGNED FOR YOU, THE COMMERCIAL
POULTRYMEN WHO ARE STRIVING FOR:

1. High Consistent Production
2. Superior Egg Quality
3. Excellent Feed Conversion
4. Low Cost

Put Your Laying Flock On—

FLORIN LA-MOR

OR

FLORIN EGG-PRODUCER



Call Mount Joy
OL 3-2411

TODAY AND GET THE
FULL DETAILS.

Wolgemuth Bros., Inc.

FLORIN, PENNA.

ATTENTION POULTRYMEN

CASHMAN Hi-Cash
PRODUCTION PULLETS

Cashman Hi-Cash Pullet lets did it again

Won the Missouri Poultrydom Sample test with highest net profit of chick & feed costs of \$2 per pullet.

Liveability for the laying period was 98%

For free folder and price list call

Weaver's Hatchery

R. D. #4, LITITZ
Phone, Ephrata RE 3-00

more farm plant

DEKALB SEED CORP.
Every Year because

- DEKALB is bred for their climate
- DEKALB stands and yields
- DEKALB matures and shells out
- DEKALB is like money in the bank

P. L. ROHRER & BRO., INC.
SMOKETOWN, PA.
Ph. Lanc. EX 7-35