

## Farmers To Play Host At Business - Farm Day

Farmers will play hosts to 150 to 200 businessmen from Lancaster city and county at the second annual Business-Farm Day, sponsored by the Lancaster Chamber of Commerce, next week.

Believing that turn about fair play, some 35 to 40 farmers in the Garden Spot will host representatives of business firms October 6 as the second annual Business-Farm Day gets underway with a general meeting of all those taking part at the Burnsey Pavilion, Lincoln Highway East, at 10 a.m.

Farmers and their families, who were the guests of business firms last year, will now be the guests of industry leaders of the problems, pleasures and satisfactions of life on the farm.

Arrangement for the representatives of industry to be grouped in groups of four to five to the cooperating farms is being undertaken by an eight man joint committee from the Chamber of Commerce and the Lancaster County Agricultural Council.

Co-chairman of the project are Walter Dunlap, Jr. from the C. of C. and Willis Z. Esbenschade from the Agr. Council.

After sharing in a traditional Lancaster county Farm-style dinner, the industrialists and farmers will meet at 2 p.m. in the Guernsey Pavilion for a forum of the day's activities.

Featured speaker of the afternoon program will be Dr. William L. Henning, State Secretary of Agriculture.

The first of the Business-Farm days in the county last year was held on the first day of national Farm-City week this year has been scheduled for November 18 through 24.

Lancaster Farming advertisements brings results.

## ● New Holland Fair (From page 1)

following the show had an average of \$32.82 per hundredweight when only one entry failed to top the \$30 mark. The champion Angus crossed the block at \$55 per CWT for a total price of \$621.50. The runner up steer brought his youthful owner \$365.40 as he changed hands at \$36 per CWT.

Average weight of the steers in the sale was 1,037 lbs. with a sale total of 16,595 pounds and \$5,446.29 for all steers.

Placings of the beef show were as follows:

### ANGUS

- 1, Carl Weaver, New Holland R1 (GC);
- 2, Rosemary Nolt, Bareville (RGC);
- 3, John Campbell, New Holland R1;
- 4, David Lapp, Bareville R1;
- 5, Richard Leaman, 2554 Creek Hill Rd.;
- 6, Janet Groff, Bareville R1;
- 7, Roy Musser, East Earl R1.

### HEREFORDS

- 1, Rodella Kurtz, Morgantown;
- 2, Leonard Kurtz, Morgantown;
- 3, Harold Leaman, 2554 Creek Hill Rd.;
- 4, Anna Pearl Lapp, Bareville R1;
- 5, Walter Kurtz, Morgantown;
- 6, Larry Weaver, New Holland R1;

## Pennsylvania's Agindustry Is 1961 Farm Show Theme

HARRISBURG — "The 45th Farm Show Presents Pennsylvania's Agindustry" is the theme of the 1961 Farm Show, the premium list for the annual agricultural event released today reveals.

The theme is amplified in a forward:

"Agriculture, by dictionary definition, is the science and art of farming, work of cultivating the soil, producing crops and raising livestock. Agriculture and farming are synonymous terms.

"As early as 1800 in the United States the commodities produced by farmers began moving into manufacturing, trade and business to supply nonfarmers as well as consumers, both here and abroad.

"Industry, by dictionary definition, is 'any branch of production, manufacture, trade or business.' Thus, by adding the abbreviation ag for agriculture, to the word industry, we have agindustry.

"This 45th annual Farm Show is agindustry in a concentrated form. Under the roof of the Farm Show Buildings, visitors will see all phases of agindustry represented—from production to consumption."

The premium list also says that \$62,984.50 is being offered in cash premiums in Farm Show competitive events, the greatest amount ever offered.

ver, New Holland R1; 7, Larry High, Bareville; 8, Elvin Hess, Bareville R1; 9, William Shirk, Goodville.

### SHOWMANSHIP

- 1, David Lapp;
- 2, Carl Weaver;
- 3, Larry Weaver;
- 4, Harold Leaman;
- 5, Richard Leaman.

### FITTING

- 1, Harold Leaman;
- 2, Rosemary Nolt;
- 3, Walter Kurtz;
- 4, Larry Weaver;
- 5, John Campbell.

Advertisers will be glad to have you mention Lancaster Farming when answering advertisements.

# Now Booking... Farm Bureau PROFITMAKER BEEF FEEDS

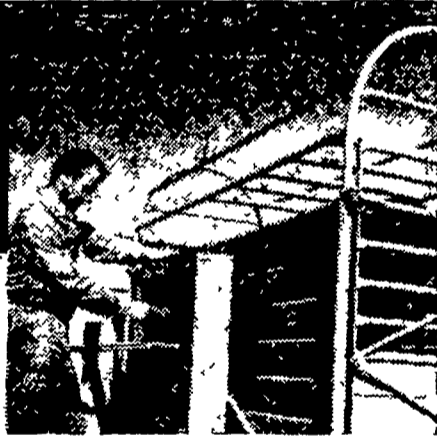
**PRICE GUARANTEED...**

... ON ORDERS BOOKED BY OCTOBER 22 FOR DELIVERY UP TO JANUARY 1, 1961

in test after test...

**UP TO 1/2 LB. EXTRA GAIN PER DAY**

DON'T DELAY . . . GET THE FACTS TODAY at Farm Bureau. Learn how YOU can get the Extra Gain that means Extra Income . . . Profits, too!



FARM BUREAU has a FEED and a FEEDING PROGRAM that is designed to fit your needs. FAST . . . LOW COST GAINS are built into FARM BUREAU'S complete line of Quality PROFITMAKER BEEF FEEDS.

Qualified FIELDMEN are anxious to serve and assist you in designing a PROFITABLE BEEF FEEDING PROGRAM.

For Prompt, Courteous Service, In Bags or Bulk, Call . . .



Manheim      Lancaster  
AIOhawk 5-2486      EX 4 0511

Quarryville      New Holland  
STERling 6-2126      ELgin 4-2146

## VENTILATION!

For the most economical ventilation for poultry and dairy

HAVE YOUR BARN AIR-CONDITIONED BY

## Vent-O-Matic

We will engineer, install and guarantee satisfactory ventilation.

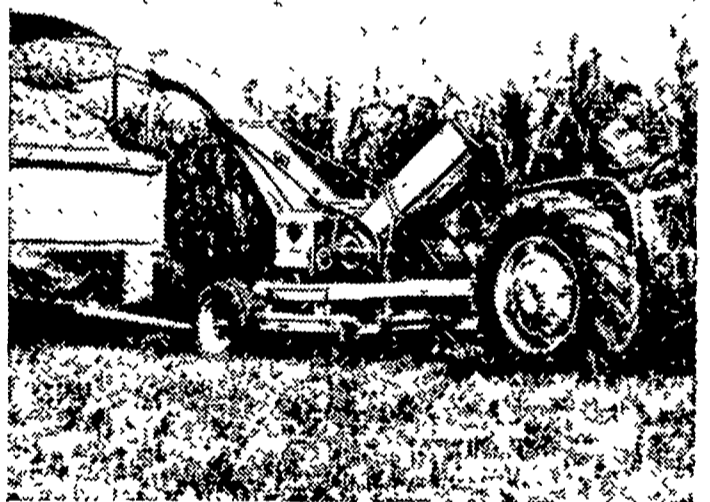
Write or call for free estimate.

## HIESTAND, Inc.

MARIETTA R. D. 1

Phone HA 6-3301

## A Big Wagonload Every 10 Minutes



That's the kind of silo filling you'll get . . . because the Allis-Chalmers Forage Harvester is tops when it comes to chopping. Four cupped, curved and spiraled knives, a full 36 inches long, cut clean across the entire width of cylinder. Because knives are kept so sharp with the built-in hone, less power is required, too. Stalks and leaves are well mixed to the right length for tight packing.

Extra grass cutting capacity, too, with the new 5-ft. wide-bite grass head attachment.

Call us . . . we'll gladly show you the latest in chopping quality silage with a new kind of capacity.

Ask us about the Allis-Chalmers plan to finance your time purchase of farm equipment.

**ALLIS-CHALMERS** SALES AND SERVICE



L. H. Brubaker      Nissley Farm Service  
Lititz, Pa.      Washington Boro, Pa.

N. G. Myers & Son      L. H. Brubaker  
Rheems, Pa.      Lancaster, Pa.

Mann & Grumelli Farm Serv.      R. S. Weaver  
Quarryville, Pa.      Stevens, Pa.

Snavelys Farm Service  
New Holland, Pa.