

Crop Summary

Moisture Extremes Continue

Harrisburg — Pennsylvania farmers who planted corn late appear to be winning in a race against frost which would leave them with immature corn, the Crop Reporting Service of the State Department of Agriculture said Tuesday in its weekly crop and weather summary. With frost holding off each day—north central and north western counties are already nearly a week past the date when the average first frost occurs—more fields reach the stage of maturity where frost will no longer damage corn. In the northwest, dry weather is helping most fields and most are now past danger. In central counties there are

still quite a few fields that need one or two more weeks. In this county the earliest picking has now taken place in most localities, but there is still quite a bit of corn with green husks.

The too wet or too dry pattern continues to exist in Pennsylvania. Some eastern localities are too wet for any field work while some northwestern counties are too dry for plowing or seedbed preparation. In the southeast there are reports that some farmers are trying to cut silage corn by using two tractors to haul the equipment through wet fields.

Apple harvest is increasing in volume as growers are getting into the fall and winter varieties. Picking of McIntosh, Cortlands, Jonathans, Smokehouse, Red Delicious and Yellow Delicious varieties is becoming general.

Low temperatures have reduced volume of most summer vegetables. Daily receipts of tomatoes at processing plants has been reduced sharply and most plants are expected to stop processing during the coming week.

Damp weather has caused some tobacco rot in the drying sheds, but the crop is generally curing well.

Potato blight is under control in most areas, but still is troublesome in the Lehigh County section. Digging is progressing in all parts of the state. The wet weather is beginning to cause rotting in some local fields.

Every Second Saturday of the month you can enjoy



BARBECUED CHICKEN

at the "Poultry Center" of the Lancaster County Poultry Assn. 340 W. Roseville Road, Lancaster

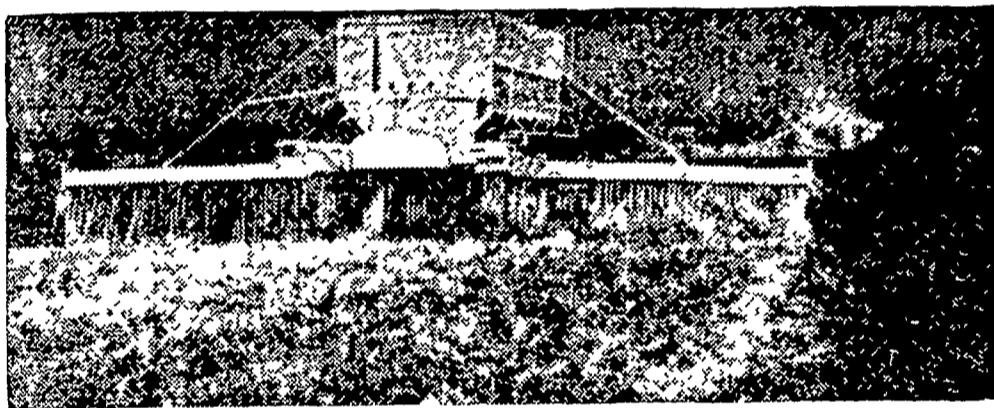
2 P. M. to 6 P. M. **SAT., OCT. 8**

(This series to replace the Annual Lititz Event)

Plan a party at home, or a dinner for your organization. Reserve your chicken in advance by calling Clara Kopf, EX 7-0339. We do all the cooking, and will specially-package your orders for pick-up on barbecue dates.

CARRY-OUT ONLY! Special Prices on 50 or more halves by advance reservation!
\$1.00 PER HALF
 Min. Net Wt. 1 1/4 lbs. per half **CALL US!**

MARTIN'S LIMESTONE



Order your Limestone now for even spreading by air or dump truck. Quick Service Free Soil Tests Quality Limestone

Ivan M. Martin, Inc., Blue Ball, Pa.

Telephones: New Holland ELgin 4-2112 Terre Hill Hillcrest 5-3455 Gap Hickory 2-4148

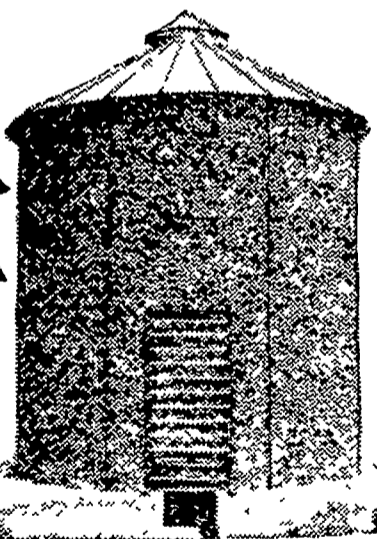
Still your best crib buy

NEW LOW PRICE

(F.O.B. Stock Points)
 Over 1200 bu. capacity—means 1st year storage at less than 25¢ per bu.

EXCLUSIVE SPEEDY RAFTERS MAKE SPEEDY CORN CRIBS

Twice as Fast twice as easy to erect



Speedy roof rafters guarantee easy, proper placement of roof panels the first time. Rafters add great strength to the roof. Panels need only to be bolted together in three places. It's another big time-saving feature you get only in Speedy Bar-Lok corn cribs.

Stands up best—lasts longer
 Wire mesh panels are 5-gauge wire—thick

as a 1/4" bolt! No bulge or sag. Sturdy 26-gauge galvanized roof is securely anchored to 9 steel roof rafters and side panels. Can't blow off!

Come in today and see the Speedy Bar-Lok corn crib. Let us prove to you that Speedy is twice as fast—twice as easy to erect. Let us show you all the other features that make Speedy Bar-Lok your best corn crib buy.

Mann & Grumelli Farm Serv.

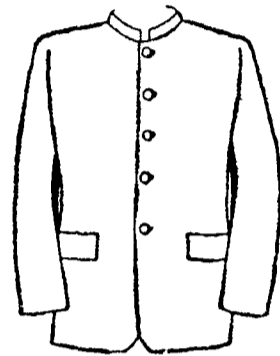
R. D. 2, Quarryville Phone ST 6-3630

Landis Bros.

Manheim Pike Lancaster Phone EX 3-3906



JOSEPH LITTLE, PARTNER AT WILLOW GLEN Farm, Strasburg RI, shows the Young boar which took the grand championship rosette in the swine show Wednesday at Lampeter Fair Willow Glen, a newcomer to competition at the show specializes in purebred Yorkshire breeding stock. —L. F. Photo



Plain Clothes

A Complete Line of Plain Suits for Men & Boys

- Plain Sack Coats
- Broad Fall Trousers
- Frock Style
- Regular Trousers
- Mutza Coats
- Topcoats, Overcoats

WE ALSO HAVE A COMPLETE TAILORING SERVICE

IF YOU ARE AN ODD SIZE OR DIFFICULT TO FIT, WE'LL MAKE CLOTHES TO YOUR INDIVIDUAL MEASUREMENT WE HAVE A WIDE VARIETY OF PATTERNS AT MODEST PRICES, AVERAGING—

61.50 to 75.00

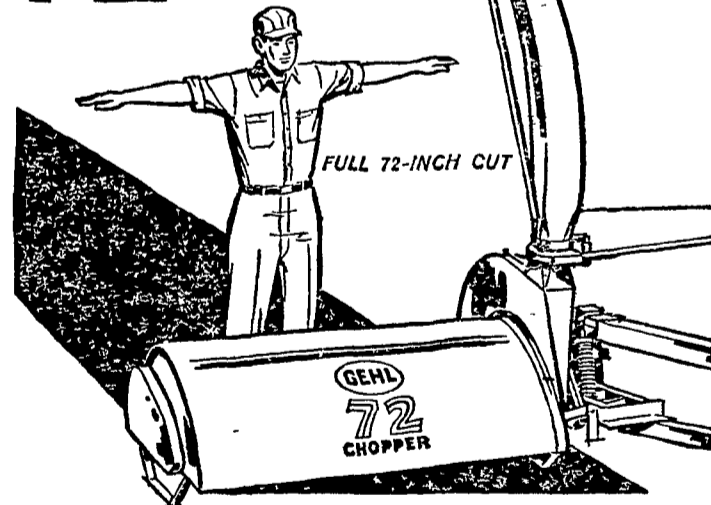
A Perfect Fit Guaranteed

OUR SHOP ALSO CONVERTS REGULAR SUITS TO PLAIN AT A REASONABLE COST.

Burkhart & Drezner

32-34 E. Main St. EPHRATA, PA. Telephone RE 3-2381

NEW! GEHL 72 CHOPPER



6-foot chopper at a 5-foot price

A full 6-footer for the forage harvest and green chopping plus all a shredder can do. Big, big capacity—PTO-powered with 72 inches of rotating flails and a knife-edged fan to double-cut the crop and keep 6 feet of swath sailing into the wagon. Loads it trigger quick way back to the wagon corners. No fan threshing or crushing! Cuts and chops at the flails . . . chops finer at the fan. Up to 1/3 more capacity than most flail choppers. It's Gehl built . . . durable, and is actually priced below most 5-foot machines.

GEHL PUTS ALL THE PRICE FACTORS IN YOUR FAVOR



SNAVELY'S FARM SERVICE

NEW HOLLAND

Phone EL 4-2214