

## County 4-H Girl Places In District Dress Review

Lois Ann Overgaard, daughter of Mr and Mrs Walter Overgaard, Lancaster R4, was the only Lancaster County entry to place in the top ten in the 4-H district dress review held Wednesday in Lyle Auditorium on the campus of Millersville State College.

A Lehigh county teenager, Carol Lutzenberger of Guilford R1 won the 16 county event by modeling her pretty pink party dress. Miss Overgaard tied for seventh place in the competition.

Representing Lancaster County in the contest, besides Miss Overgaard were her twin sisters, Elen and Esther Overgaard, all of Lancaster R4, Mary Jane Herr Reffon, and Barbara Gamble Columbia R2.

The top winner will compete with three other district winners for the state title. The state winner will go to the National 4-H Congress in Chicago, Ill., in November.

Lois Ann Overgaard modeled her sports-dressy outfit

which won her the county senior title. It consists of two skirts, a plaid one and a plain brown one, a reversible jacket, plaid on one side and plain brown on the other, a blue sleeveless blouse and a white, long sleeve blouse with six rows of lace down the front.

Seventy-two contestants representing 16 counties in southeastern Pennsylvania took part. Each was judged on not only the garment she had made, but also on a 4-H record book of her 4-H and community activities, which she also had to submit. The garments were judged not only on construction but also on how they looked on the girls. Taken into consideration also was how the girls modeled their outfits.

Shown were many smart school ensembles made of wool and a number of complete suits in wool. The slantwaist style was very popular for dresses which ranged in material from cotton to wool. Several party frocks also were modeled. (Turn to page 13)



LOIS ANN OVERGAARD, LANCASTER COUNTY'S only winner in the 4-H district Dress Review congratulates the winner of the event, Miss Carol Lutzenberger, Lehigh County, on the left. Earlier this summer, Lois Ann won the State Grange sewing contest, and just last week was named to represent Lancaster County in the district Dress Review. — L. F. PHOTO

## Ag Center (From Page 1)

ville R1; Alexander L. Gehl, Ephrata, Wilbur H. Stand, Salunga, representing the county millers and feed dealers.

Leslie S. Hubbard, East Petersburg, representing county hatcherymen, Victor M. Longenecker, Elizabethtown R3, Richard P. Middle, Quarryville R2, representing the county Pomona Growers; Paul H. Mount, Quarryville R2, representing the county farm implement dealers; Phares Risset, Elizabethtown, representing the county bankers.

Dr. E. I. Robertson, Lancaster, representing county food manufacturers, L. H. Strohme, Lancaster, representing Holland Machine Co., Adam H. Weidman, Manheim R1, representing the county farm women societies and Eugene R. Winstler, New Holland R1.

The group also voted to include two honorary members on the board. They are Emer L. Esbenhard, 1220 Manheim Pk., and Floyd S. Bucher, Reamstown, county agent.

The proposed site of the center is a tract of land half in Manheim Twp. and half in the city, on Arden Road.

An analysis of daily news paper reading shows there's no "off season" for newspapers' popularity. Over 61,000,000 copies are purchased every day in the United States and Canada—summer, winter, autumn, and spring.

Advertisers will be glad to have you mention Lancaster Farming when answering advertisements.

Every Second Saturday of the month you can enjoy



## BARBECUED CHICKEN

at the "Poultry Center" of the Lancaster County Poultry Assn.  
340 W. Roseville Road,  
Lancaster

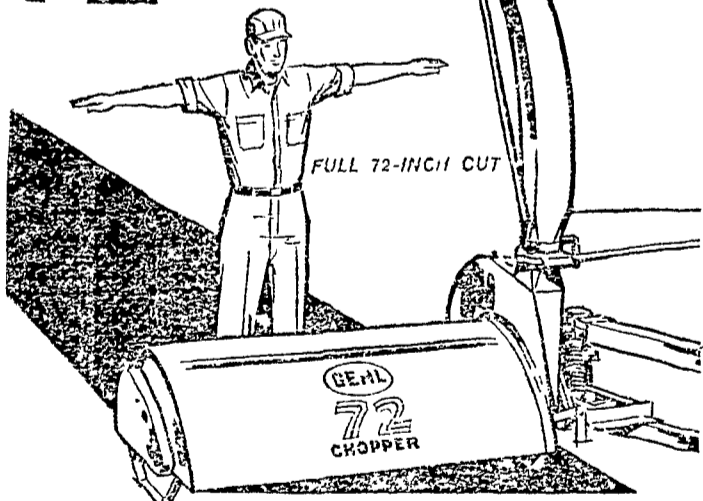
2 P. M. to 6 P. M. **SAT., SEPT. 10**

(This series to replace the Annual Litz Event)

Plan a party at home, or a dance for your organization. Reserve your chicken in advance by calling Clara Kopf, EX 7-0339. We do all the cooking, and will specially package your orders for pick-up on barbecue dates.

**CARRY-OUT ONLY!** Special Prices on 50 or more halves by advance reservation!  
**\$1.00 PER HALF** Min. Net Wt. 1 1/2 lbs. per half **CALL US!**

## NEW! GEHL 72 CHOPPER



**6-foot chopper at a 5-foot price**

A full 6 footer for the forage harvest and green chopping plus all a shredder can do. Big big capacity—PTC-powered with 72 inches of rotating flails and a knife edged fan to double cut the crop and keep 6 feet of swath sailing into the wagon. Loads it tigger quick way back to the wagon corners. No fan thrashing or crushing! Cuts and chops at the flails... chops finer at the fan. Up to 1/3 more capacity than most flat choppers. It's Gehl built... durable and is actually priced below most 5-foot machines.

GEHL PUTS ALL THE PRICE FACTORS IN YOUR FAVOR



**FARMERSVILLE EQUIPMENT COMPANY**

R. D. 2 EPHRATA

EL 4-9221



**PEARS ARE PICKED**

## Bartlett Pears

AND CHOICE NEW PEAR VARIETIES

Pears for Everyone — Beginning August 30  
WHOLESALE AND RETAIL

Open: 8 a.m. to 8 p.m. — Sat. 8 a.m. to 5 p.m. — Closed Sunday

CALL AT THE . . .

## SHANK FRUIT FARMS

NEW DANVILLE PIKE (PA. ROUTE 324) R. D. #6 LANCASTER, PA.  
PHONE EX 2-6022

Still your best crib buy

**NOW \$319.50**

(FOB Stock Points)

Over 1200 bu. capacity—means 1st year storage at less than 25¢ per bu.

EXCLUSIVE SPEEDY RAFTERS MAKE **SPEEDY CORN CRIBS**

# Twice as Fast

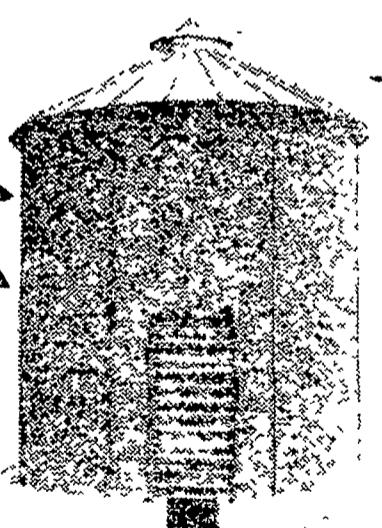
twice as easy to erect

Speedy roof rafters guarantee easy, proper placement of roof panels the first time. Rafters add great strength to the roof. Panels need only to be bolted together in three places. It's another big time-saving feature you get only in Speedy Bar-Lok corn cribs.

**Stands up best—lasts longer**  
Wire mesh panels are 5-gauge wire—thick

as a 1 1/2" bolt! No bulge or sag. Sturdy 26-gauge galvanized roof is securely anchored to 9 steel roof rafters and side panels. Can't blow off!

Come in today and see the Speedy Bar-Lok corn crib. Let us prove to you that Speedy is twice as fast—twice as easy to erect. Let us show you all the other features that make Speedy Bar-Lok your best corn crib buy.



## Mann & Grumelli Farm Service

R. D. 2, QUARRYVILLE

Phone ST 6-3630