

First Annual 4-H Horse Show Is Scheduled For Today

The first annual 4-H horse club roundup is scheduled to be held this afternoon at the Paul Z. Martin grounds in Blue Ball.

Judging, scheduled to begin promptly at 1 p.m., will be divided into the following 11 classes: Grooming and showmanship, 'Pleasure class for ponies and western horses, Bareback equitation, Break and out, Western working horses, Pony roadster, Equitation in saddle seat and stock saddle seat, Barrell race, Trail class, Mare and colt, and musical chairs.

Both the Boots and Saddles (Northern) club and the Rough Riders (Southern) club will participate.

Where Quality Comes First — Use Nature's Best

Use
New Jersey Green Sand

AND
Colloidal Phosphate

ON ALL FALL GRAINS & GRASSES Available in any quantity. Bag or Field Spreading Service

CONTACT

Brooklawn Farm
118 KREIDER AVENUE
LO 9-1580
Or Your Local Dealer

DEAD ANIMALS REMOVED PROMPTLY

Will Pay Full Value For Dead Animals Dealers in Bones, Tallow and Hides

FRY'S RENDERING WORKS

Prop., John Fry
2114 Hollinger Rd.
Lancaster
Ph. EX 2-4815 If No Answer Ph. EX 7-0472

● New Holland Fair

(From Page 1)

High School has been named chairman of the event.

More than \$450.00 in cash premiums and ribbons will be awarded in the three-crop event. Competition in this show is open to all parts of Lancaster County and its neighboring counties.

A \$100.00 premium will be awarded to the grand champion hay entry. Hay competition will include classes for alfalfa, clover, timothy, and mixed hays. More than \$200 in premium money will be

-Judge of the show will be Bud Gochaneauer, Quarryville. Charles McCrabb, of Quarryville, will be the announcer, and Elam Buckwalter, Stevens, will be Ring

divided between the top winners in the hay competition.

A \$50.00 premium will be awarded to the grand champion lath of tobacco. The tobacco competition will include three classes: Best lath of five wrapper stalks, best lath of five filler stalks, and best lath of five green stalks. More than \$100 will be divided between the top winners in the tobacco classes.

The corn show will include three classes: The first class, best single ear of Hybrid Dent or Open Pollinated Dent, will have a \$5.00 cash prize on the top ear. The second class, best ten ears of Hybrid Dent or Open Pollinated Dent corn, will have a \$25 premium on the top ear. The last class for corn, best thirty ears, will have a \$15 top prize. More than

\$100.00 will be given in the corn classes.

No entry fee will be charged for any class and all exhibits shown must have been grown by the exhibitor in Lancaster County or a surrounding county. Judging will begin on Wednesday, Sept. 28 at 8 o'clock a.m.

RUST HARD ON MACHINES

Farm machines can rust out quicker when neglected than they wear out under normal usage and with good care. A rust preventive on frictioning parts when machines are not in use pays dividends later in longer life expectancy of the machines, reminds Burton S. Horne, Penn State extension agricultural engineer.

Market Egg Producers—

EFFICIENCY PAYS

DO YOU KNOW THAT:—

- A 12½% improvement in feed required per dozen eggs equals a saving of \$9.00 per ton?
- That our Early Bird #26 All Mash Laying feed will definitely produce Better Shell Quality over the laying year?
- That each ½% improvement in breakage can improve your income by \$36.00 per 1,000 hens housed?
- That Lighter Colored Uniform eggs traditionally command a Better Price. A price improvement thru better grade of ½ cent per dozen amounts to approximately \$100.00 per 1,000 hens housed?
- That it's not the START, it's the FINISH that counts. If your feeding program gives you 1% better hen house liveability and ½ dozen more eggs per hen housed, it can mean as much as \$200.00 extra return per 1,000 hens?
- That GOOD records pay big dividends? Without accurate records you CAN NOT fairly judge the value of your program?

— NOTE —

A combination of all the savings suggested in this ad will lower your production costs as much as from 3 to 4 cents per dozen eggs produced.

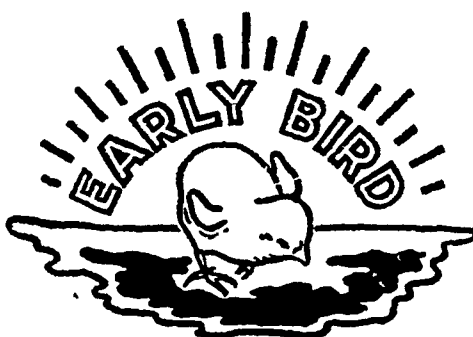
It can be done on the right program!

Try Early Bird.

Early Bird Feeds and Good Management

A WINNING COMBINATION FOR ANY POULTRYMAN

Contact your Miller & Bushong Service Representative or call us direct at Lancaster EXpress 2-2145



Miller & Bushong, Inc.

Rohrerstown, Pa.

Ph. Lancaster EX 2-2145

Manufacturers of Poultry and Livestock Feed Since 1875

New
Musser Leghorn
FARMS
PULLET

R.D. 1, MOUNT JOY, PA.

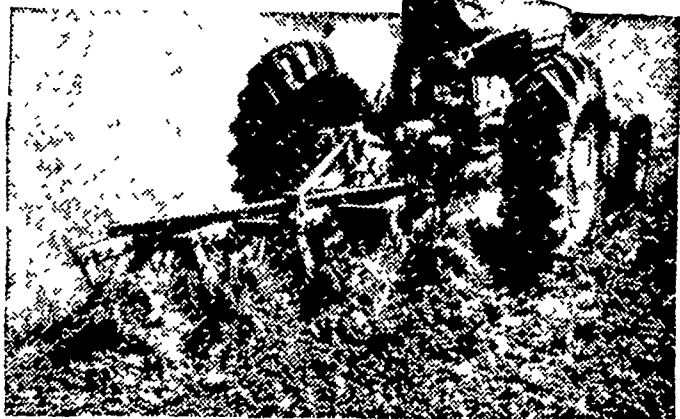
Here's What You Can Expect With

Non-Stop D-17 Plowing

- ★ 10 acres plowed in less than 5 hours
- ★ Only 1½ gallons gasoline per acre
- ★ Four 14-inch bottoms, 7 inches deep . . . oats stubble, sandy loam with clay

We have the whole story, including detailed results of this plowing test.

GET THIS KIND OF WORK ON YOUR FARM



Ask us about the Allis-Chalmers plan to finance your time purchase of farm equipment.

ALLIS-CHALMERS
SALES & SERVICE



L. H. Brubaker
Lititz, Pa.

Nissley Farm Service
Washington Boro, Pa.

N. G. Myers & Son
Rheems, Pa.

L. H. Brubaker
Lancaster, Pa.

Mann & Grumelli Farm Serv.
Quarryville, Pa.

R. S. Weaver
Stevens, Pa.

Snavelys Farm Service
New Holland, Pa.