

At Lancaster Yards

Steers Steady But Slow

with 2910 last week Supply included 50 percent slaughter steers and 40 percent stockers and feeders Trading was slow Compared with last week's close, slaughter steers were steady-50 lower. Cows mostly 25 lower. Bulls were 25-50 off Stockers and feeders weak

Lots and loads Choice grade 1000-1258 lb slaughter steers 25 75 27 00, lot high Choice 1090 lbs sold at 27-40 and a load Choice and Prime 1143 lbs brought 27-56, Good grade 23.50-25 75, Standard 21 50-23 50.

Cutter and Utility cows ranged from 14 50-17 00, Canners and Low Cutters 13 50-14 50 Utility and Commercial bulls 19 00-22 00 Cutter 18 00-18 75, Good grade bulls 22 00 25 00 Medium and Good 650 950 lb. feeder steers 21 50-25 00, load Choice 1025 lbs sold for 24-25, Common and Medium 550-700 lb stock steers 20 00 - 22 00

CALVES 575 compared with 619 last week Vealers were 2 00 higher Good and Choice vealers 26-31 Choice and Prime 31-34 and a few sold at 35 00, Standard and low Good 20-26, Utility down to 17 00

HOGS 1600 compared with 1587 last week Trading moderately active Barrows and

gilts closed mostly 75 lower Sows steady. U S 1-2 190-220 lb barrows and gilts 19-75-20 50, few lots mostly No. 1 190-215 lbs 20.75 with ten head 195-215 lbs. selling at 21 00, this kind was absent after Monday. U S 1-3 grade 190-230 lb. butchers 19 00-19-75, closing at 18 75 19.25. 230 250 lb. hogs, mostly 2-3 grade, on Monday sold for 18 50-19 00 U.S. 1-3, mostly 2-3, 300-600 lb. sows 12.00-15 00.

SHEEP 400 compared with 774 last week Trading moderately active Spring slaughter lambs about 1 00 higher Choice and Prime 80-95 lb spring slaughter lambs made 22 00-23.00, Good and Choice 20 50 22 00

Delmarva-Geo.

(From page 3)

for the same week a veal averaged 18 00 and mash cost \$90 63 per ton This ago when mash cost \$99.00 per ton and broilers were selling for 16 36

Estimated slaughter by Georgia processors for the week end is 2,138,000 head compared to 1,996,000 head last week end

Georgia reported prices of 15 5 to 16 7 on 1,853,000 head at farms during the 24 hour period ending 10 30 on Friday morning.

Vintage Livestock Steers Sell Fully Steady

Slaughter steers sold at fully steady to spots of 25 higher on the choice grade at the Vintage cattle market this week. The August 9th sale had receipts of 373 cattle Cows were fully 50 higher and bulls were steady.

The bulk of the choice grade slaughter steers made 25.75 to 27 25 with a few lots of 1,000 to 1,200 pound weights at 27 35 to 27.75. Good to low choice ranged from 23 50 to 26 with standard down to 21

Cutter and utility cows made 15 50 to 17, while canners and low cutters were 14 to 15.50 Utility and commercial bulls were 19 50 to 21.50

Several lots of medium and good 800 to 1,000 pound feeder steers made 20.50 to 23.30.

Calves 432—Vealers were fully steady to 50 higher with good and choice vealers making 26 to 32 High choice and prime sold at 33 50 to 36 50 with standard and good at 22 to 26 and utility down to 18.

Hogs 57—Barrows & gilts were fully 50 lower Several lots 1 to 3 grade 200 to 212 pound barrows and gilts 18-85 to 19 A lot of mostly No 1 at 212 pounds brought 19-30 A few lots of 175-191 lb mostly No 2 made 18.10 to 18 16.

Sheep 33—A few lots of utility and good spring slaughter lambs made 16 to 21

New Holland Steers Steady, Others Up

Slaughter steers sold steady to strong at New Holland this week High cutter and utility grade cows were 50 higher Utility and average cutters were 50 to 1 00 higher Bulls sold 25 to 50 higher. The August 11 sale had

receipts of 817 cattle Several lots of high choice and prime 950-1,200 pound slaughter steers made 27 10 to 27.75, but the bulk of the choice cattle were 25 50 to 27 Good to low choice made 23 25 to 26 while standard sold down to 21

Good and choice heifers weighing 702 to 945 pounds made 22 75 to 25 25 Cutter and utility cows brought 15-50 to 17 with canners and low cutters going at prices of 14 to 15 50 Utility and commercial bulls were 19 to 22 50 with cutters down to 18 Good grade fed bulls made 22.50 to 25 25

A few lots of good grade 472 to 552 pound stock calves made 24 35 to 25 75 Medium grade stock calves 443 to 525 pounds made 22 to 22

Calves 337—Vealers under 100 pounds were 1 00 lower Heavier weights were steady to 1 00 higher as good and choice vealers made 26 to 31 Choice and prime were 31 to 36 with a few head going to 36.50 and 37 Standard and low good made 21 to 26 with utility down to 18

Prices at the August 10 dairy cattle sale were irregular with some kinds steady while others were slightly lower Receipts were 134 cows, five bulls and 14 heifers

Fresh cows, Holsteins \$350 - 420, Guernseys - \$200 265 others - \$200-270 Stock bulls - \$135-185 Stock heifers \$75 130

The August 8 horse sale had receipts of 170 head The market was steady to strong

A few mules went to farmers at \$135 to \$170 Mare ponies were \$120 to 180 with gelding ponies bringing \$70 135 Riding horses sold for \$115-210 with driving horses bringing \$125 to 295 Killers were up slightly at 7 to 7 1/2 cents.

Chicago Cattle Largest Supply Since Mid July

Receipts increased 15 percent to the largest supply since mid July Consist of the receipts little changed with 75 per cent slaughter steers between 15 and 20 per cent heifers and about 5 per cent cows Vealers and stockers and feeders very scarce. Percentage of prime little increased over the five per cent of last week.

Slaughter steers 1300 pounds and below were 25 to 50 lower Heavier weights were 50 to 75 lower with some sales of prime over 1400 pounds 1 00 lower. Slaughter heifers 25 to 50 lower Canners and cutters 25 to 75 higher with bulls steady to 50 higher Vealers steady to 1 00 lower with stockers and feeders weak

Mixed high choice and prime 1200 to 1350 pound steers made 27 50 to 29 on Monday but only one load of 1395 pound steers made 27-50 on Wednesday for the lowest top price on a Wednesday since November 1957. A few loads of high choice and mixed choice and prime 1,000 to 1,100 lb steer yearlings were 25.75 to 26 50. Good to average choice steers 22 50 to 25.75 Load good 1,200 lb weights 23 25 with mixed standard and good steers making 21 50 to 22 50

3 ft Ang'e iron fence posts with 2 insulators & clips	58c	Altman's Dog Meal	\$8 50
Altman's Milk Replacer	25 lbs \$3.75	Are you in need of Baler Twine?	
Blue Bird Egg Mash	\$3 90	Pigeon & Chicken Feeders	
Turkey Starter	\$4.65	Peat Moss	\$4 20
Turkey Developer	\$4 50	Staz Dry	\$2.60
Rabbit Pellets	\$4 90	Special Chop	\$3 25
		20% Bluebird Dairy	\$3 20
		Fitting Ration	\$3 65

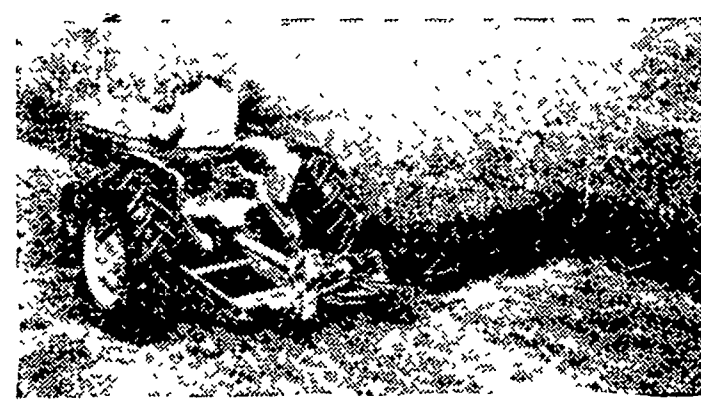
ALTMAN'S CASH FEED STORE

947 Harrisburg Pike

Ph Lanc. EX 4-7715

**CHAIN SAW SERVICE CENTER**  
New & Used  
**Snavelly's Farm Service**  
NEW HOLLAND EL 4-2214

LOOK! LISTEN!



TWIN-WHEEL drive mowing is FAST...SMOOTH...QUIET

80-R mower sickle is driven by rotating flywheels...no pitman...no more vibration, chatter, pitman breakage.

Cuts all kinds of hay easily...like-new mowing on thousands of acres. New rugged frame keeps cutter bar in true alignment, prevents "pull back" and twisting.

Easy on-and-off mounting for Allis-Chalmers tractors.

Stop to see and hear a new TWIN-WHEEL drive mower.

TWIN WHEEL is an Allis Chalmers trademark.

Ask us about the Allis-Chalmers plan to finance your time purchase of farm equipment.



- L. H. Brubaker      Nissley Farm Service  
Litz, Pa.              Washington Boro, Pa.
- N. G. Myers & Son      L. H. Brubaker  
Rheems, Pa.              Lancaster, Pa.
- Mann & Grumelli Farm Serv.      R. S. Weaver  
Quarryville, Pa.              Stevens, Pa.
- Snavelys Farm Service  
New Holland, Pa.

Quality Feeds at Low Cost....

**FLORIN FEEDS**

★ Labor Saving Bulk      ★ Easy Handling 50's

From Our Modern Manufacturing Facilities to Our Excellent Service—

We Can Serve Your Individual Needs

Call Mt. Joy OL3-2411 Today!

**Wolgemuth Bros., Inc.**  
FLORIN, PENNA.