

Three County Sheep Breeders Consign Rams To State Sale

Carlisle—Nineteen breeders from eight counties today had consigned thirty-five rams and fifteen ewes to the 23th annual purebred ram and ewe exchange sale sponsored by the Cumberland Cooperative Wool Growers Saturday afternoon, August 6, at Carlisle Fair Grounds, starting at 1 p.m. Roy H. Miller, Carlisle, secretary treasurer of the sheepmen, said he will mail catalogs to all persons requesting them.

The animals will be graded and sold according to type and quality as an aid to buyers in selecting the kind of animal they need for their particular flock. The sale is

considered an exchange because buyers are encouraged to consign rams they buy this year to next year's sale and then purchase a new sire. In this way they can continue improving their flocks at a minimum of expense.

Rams in the sale include 27 Hampshire, 5 Cheviot, 2 Southdown, and 1 Suffolk. Eleven are lambs, 15 yearlings, 4 two-year-olds, and 5 three-year-olds. Of the 15 ewes, 13 are Hampshires, and 2 Cheviot.

Each year the cooperative sponsors this sale as part of its sheep and wool improvement program. More than 800 rams have gone through

This Week

(From page 4)

in the heart of a fast-growing center of office buildings.

The Grange and its members in 37 states from coast to coast are to be congratulated on the new farmers' headquarters building in the Nation's Capital. It is a building all farmers can be proud of, whether or not they are members of the Grange.

Patronize Lancaster Farming Advertisers

27 previous sales. Consigners from Lancaster County include Harold W. Bard, Denver R2, Green Meadow Farms, Bareville R1; and Henry J. Showalter, Akron.

Best Food Buys

Local Vegetables Are Plentiful

Summertime has brought forth an abundance of fresh fruits and vegetables and prices are declining on most commodities, reports Tom Piper, Penn State Marketing Agent. Food shoppers will find chuck roasts and fresh picnics the better buys at the meat counter this week-end.

The harvest of fresh vegetables from local producing areas is underway. Roadside stands, farmer's markets and retail stores are displaying the long awaited sweet corn and tomatoes. The best tomatoes are firm, well shaped, heavy for size and free from growth cracks, insect or other types of damage.

The outstanding vegetable buys include all salad-type vegetables this week—cabbage for cole slaw, tomatoes and cucumbers for many types of salad preparation. When buying cabbage purchase heads that are closely trimmed and firm. Long straight, green cucumbers should be your choice if you wish to avoid waste.

Summer apples and peaches highlight a wide variety of bargain priced fruit. Cantaloupes have declined in price from last weeks levels as many more nearby cantaloupes are being received in local markets. Other good buys include watermelons, plums, nectarines, lemons and limes.

Chuck roasts of beef continue to hold the best buy position at retail meat counters. Almost continually casing beef costs provide more merchandising room for steaks, too, despite heavier summer demand. Fresh picnics will appear as an economy cut in some stores as fresh pork prices appear to have finally bumped the

ceiling. Egg production is declining seasonally and although supplies are adequate, they are less plentiful. Eggs will however, continue in the "best buy" column, considering the food value they provide.

Falls Take Toll Of Pa. Farmers

Harrisburg—Last year 92 members of Pennsylvania farm families lost their lives in needless accidents at work and in the home, Pennsylvania Secretary of Agriculture William L. Henning said today. He is chairman of Farm Safety Week which ends today.

"In fact, falls are responsible for 13 percent of the fatalities in our rural areas," Henning added. "Farm families, however, are more subject to falls than their urban cousins since much farm work involves climbing and working in high places."

"We are in the most dangerous period of the year on the farm. Studies have shown that most farm accidents happen during June, July and August. Much of the farm activity in these months involves working in potential fall areas."

"Haymaking, even with our modern methods, is hazardous. Many falls have occurred when lifting bales of hay on to a stack or when placing hay in a barn with open feeding chutes."

"Some operators climb over machinery instead of walking around or using a ladder or other steady platform. Slick shoes on a barn to have finally bumped the

(Turn to page 13)

HOT WEATHER'S HARD ON BROILERS

Good management practices and regular use of Early Bird feeds make a winning combination for any poultryman, especially during the difficult summer months.

A WINNING COMBINATION —

Hot weather's hard on broilers. At the beginning of summer, feed intake will often increase to about 185 pounds per 1,000 in the eighth week. But then feeding levels off — and it's this leveling-off process that slows growth and interferes with good conversions.

Here's where the winning combination of good management and Early Bird feed becomes apparent. NO feed, whatever its merits will take the place of good hot weather management. But by making sure your birds are comfortable, and by using Early Bird rations exclusively, you can help feeding stay normal during hot weather. Special additives in Early Bird rations will help stimulate the feed intake during warm weather when broilers often lose appetite and weight.

Here are some recently recorded performances on Early Bird Broiler feeds:

No. Birds	Age Wks. Days	Weight	Conversion
18,000	9-3	3.72	2.37
3,500	9-2	3.84	2.23
11,000	9-5	3.91	2.43
12,000	9-2	3.99	2.25

GOOD? Of course it's good and it shows what can be accomplished when a grower manages to combine ALL of the necessary factors which go into producing GOOD birds at a LOW COST.

These RESULTS show what can be accomplished when a grower combines good management and quality Early Bird feeds to produce top quality birds at low cost.

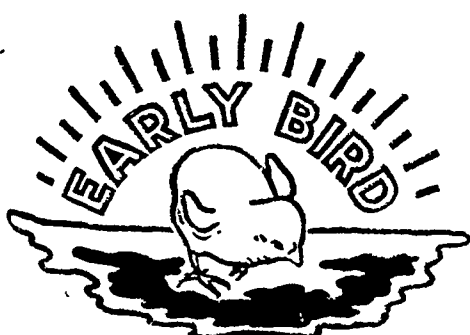
For the finest service anywhere, contact your Miller & Bushong representative today, or call Lancaster, EXpress 2-2145.



Miller & Bushong, Inc.

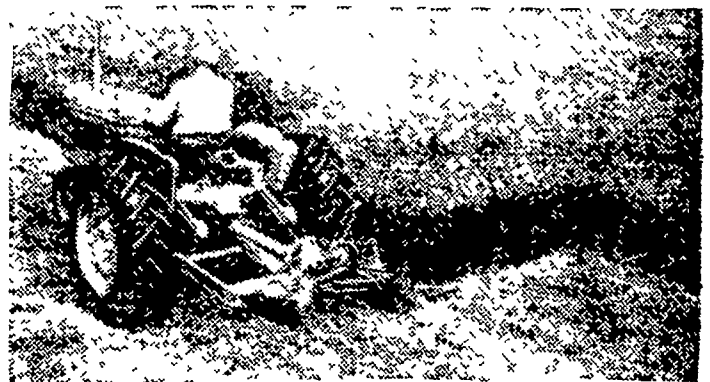
Rohrerstown, Pa.

Ph. Lancaster EX 2-2145



Manufacturers of Poultry and Livestock Feed Since 1875

LOOK! LISTEN!



TWIN-WHEEL drive mowing is

FAST...SMOOTH...QUIET

80-R mower sickle is driven by rotating fly-wheels... no pitman... no more vibration, chatter, pitman breakage.

Cuts all kinds of hay easily... like-new mowing on thousands of acres. New rugged frame keeps cutter bar in true alignment, prevents "pull back" and twisting.

Easy on-and-off mounting for Allis-Chalmers tractors.

Stop to see and hear a new TWIN-WHEEL drive mower.

TWIN WHEEL is an Allis-Chalmers trademark.

Ask us about the Allis-Chalmers plan to finance your time purchase of farm equipment.

AC ALLIS-CHALMERS
SALES AND SERVICE

L. H. Brubaker
Lancaster, Pa.

N. G. Myers & Son
Rheems, Pa.

Mann & Grumelli Farm Serv.
Quarryville, Pa.

R. S. Weaver
Stevens, Pa.

L. H. Brubaker
Lititz, Pa.

Nissley Farm Service
Washington Boro, Pa.

Snavelys Farm Service
New Holland, Pa.