

Corn Makes Growth Spurt In County

Lancaster County's corn crop reflects the state Crop Reporting Service's weekly roundup by showing much more rapid growth than previously.

The state agency this week reports that corn throughout the state is growing faster but the cool nights continue to slow development of the crop.

Tassels and silk are showing in many of the county fields, but growth is shorter than last year. Supplies of moisture are still good in most corn fields, but tobacco and some vegetables will begin to feel the effect of dry weather soon. Some sections of the county had showers this week while others were completely without precipitation.

Small grain harvest is virtually completed and most straw is baled. Second cutting of alfalfa is practically completed and fields generally show good recovery and rapid growth.

Tobacco growth has speeded up, but tobacco fields are very uneven in many sections of the county. Some fields have been topped while others show only four or five leaves and in many of the fields both the extremes can be found in the same planting. Weather extremes and cutworms which caused

the necessity for large replantings are two factors in the condition.

Potato harvest is getting underway with crops showing good quality and good to very good yields. Sweet corn and tomatoes are moving to market in increasing quantities, but tomatoes are still behind schedule for this time of the year.

Hay and pasture fields are in very good condition for this time of year and pastures are furnishing large

amounts of forage in most sections. New hay seedings made enough growth to cause combining difficulties in some fields and many stubble field hay crops will be harvested soon.

It's a good idea to identify heifer calves. Dairy scientists point out the calves may be identified by ear tags, tattoos, photographs, or sketches showing color marking.

Give Lancaster Farming advertising a chance to work

TOP-DRESS ALFALFA and CLOVER

After The First Cutting

- | | |
|---------|-----------|
| 0-14-14 | • Bags |
| 0-20-20 | • Bulk |
| 0-15-30 | • Applied |

BORAX Added for Alfalfa
LIME AND STONE DUST

Organic Plant Food Co.

GROFFTOWN ROAD

Ph. EX 2-4963

FOR QUALITY EGGS

AT LOW FEED COST



Buy RED COMB EGG MASH, Today!

RED COMB's policies give you a quality feed at low cost. This fact combined with its good palatability, freedom from dust, and bright appearance makes it your best buy!

Feed RED COMB EGG MASH Equally With Scratch for Top Quality Eggs With Excellent Flavor.

For further information see...

Joseph M. Good & Sons

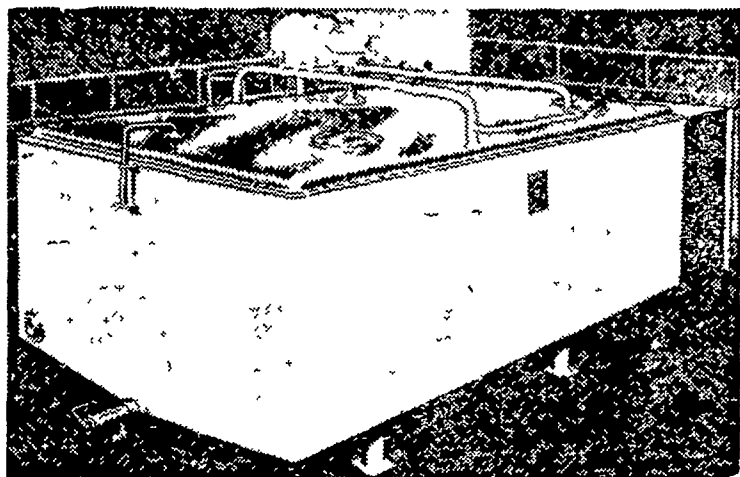
LEOLA — QUARRYVILLE

CLARK ELECTRIC

is your headquarters for

GIRTON FARM TANKS

SEE — COMPARE — BUY
GIRTON DELUXE 1-PIECE COVER MODEL



Available in sizes 100 gallon through 1500 gallon.

- They're built to last. Heavy steel framework sealed in air tight, rust resistant, moisture free chamber.
- You get more for your dollar. Gallon for gallon of capacity, it's your best buy.
- Fast, economical direct-cooling.
- Completely automatic operation.
- Built low—only 34" from floor to strainer opening.
- Sanitary stainless steel outlet valve.
- Vermin-proof covers keep milk clean.

WE INVITE YOUR INQUIRIES.

R. D. I. KINZERS

Phone Intercourse SO 8-8501



Let our factory-trained representatives show you why dairymen everywhere choose Girton over ordinary farm tanks.

CHECK PLAIDS

When selecting plaids check for high quality garments advises Thelma Baierl, Penn State extension clothing specialist. Plaids should match at seams and center front or back open-

ings. Also, plaids should be centered on the garment give an even appearance such places as skirt front and back or a shirt collar.

Try a Classified

PUBLIC SALE

— OF —
REAL ESTATE

Mon. Eve'g., August 8th

7:00 P.M., D.S.T.

Located in Southern Lancaster County, Little Britain Twp. on the road from Oak Hill to Tayloria, at Tayloria, Pa.

SIX ROOM HOUSE

with bath and heat, running water, BARN, wagon shed, milk shed, buildings all have slate roofs Farm includes thirty-four acres, more or less.

Conditions of sale, 10% down evening of sale, balance in 30 days.

Owners: **Thomas S. Ray & Trixie Ray**

W. Hensel Brown,
Merrill L. Hassel, Attorneys
Norman W. Hart, Auctioneer

Phone: Kirkwood LA 9-2744

PUBLIC SALE

August 13th 1960

Hart Bro's Livestock Exchange & Farm Supplies between Routes 472 & 272 at Tayloria, Pa. 12 miles south of Quarryville, 6 miles west of Oxford.

Auctioneer & Manager, Norman W. Hart, Nottingham, Pa. Phone Kirkwood LA 9-2744.

MACHINERY SALE AT 11:00 A.M., D.S.T.
LIVESTOCK SALE AT 1:00 P.M., D.S.T.

ONE TRAILER LOAD OF Wisconsin First Calf Heifers

vaccinated and T.B. tested, 2 loads of Northern Penna cows. Certified and Area tested. Holstein heifers and Bulls, Feeder pigs.

Most cattle eligible for out of state shipment Free delivery on Livestock.

Terms Cash.

HART BRO'S, Owners

Lunch will be served by the King Daughters of Little Britain Church



AUTOMATIC DELIVERIES!

Based on the severity of the weather and your "degree-day" needs. No need to call us — and no worry about running short.

GARBER OIL CO.

105 Fairview St.
MOUNT JOY, PA.
Ph. OL 3-2021

USE . . .

Belmont Limestone

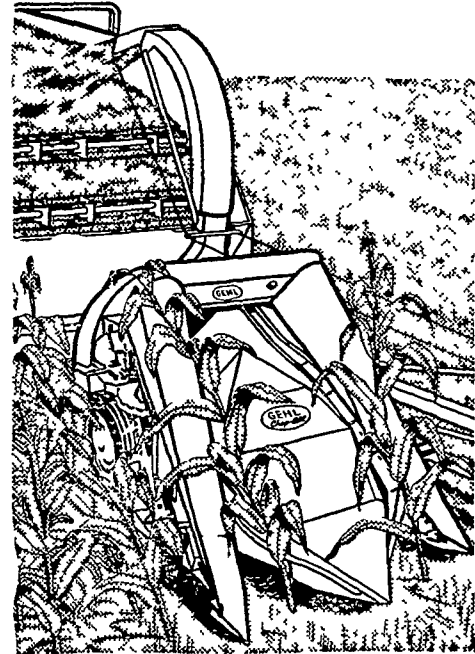
FOR . . .

- SOUNDER ROOTS
- HEALTHIER PLANTS
- FINER CROPS

BELMONT LIMESTONE COMPANY

R. D. I. PARADISE
Ph. Gap HI 2-4133

2-Row Chop-All



saves field and travel time

Save field time, chop silage faster at peak of feed value with Gehl 2-Row Chop-All! Big capacity chopping with half the field travel. Handles row crops 36 to 42" wide. Safer, too, with Gehl's exclusive Safety Clutch that stops the chain gathering mechanism so you can safely check the machine in the field. Get instant operating control from the tractor seat with Gehl's forward-neutral-reverse lever. Come in and check Gehl's safety features and bigger capacity!



SNAVELY'S FARM SERVICE

NEW HOLLAND

PHONE EL 4-2214