

See Our Want Ads For Bargains Try a Classified Ad.

Give Lancaster Farming advertising a chance to work

● Linear

(From Page 1)

kets," Hutton said  
With the information as accurately supplied as possible, all feasible plans of farm programming are considered by first eliminating the obviously unsuited activities

For example, a farmer might have the alternatives in the dairy business of raising all or none of his grain feed, all or none of his forages, having a pasture program or a "corral" dairy program. He might plan to raise his replacements or buy them, or any number of other variations. Similar variations arise in all other phases of farming.

Now the question arises, how can all necessary data be processed to show the farmer what he could expect in the way of returns from each program? The answer is PENNSTAC

Pennstac is the electronic computer built by the Electrical Engineering department at the University. It has been used for several months to process the Dairy Herd Improvement records for the state

Fed accurate information regarding goals and resources, the computer will run through an amazing number of calculations to find the pertinent activities which will help the farmer reach his goals

When asked what the future of Linear Programming is likely to be, Becker said "We have never before put so much pressure on facts. One thing we are finding out is that we need better and more detailed and accurate records. The university plans to build a course in agricultural economics around the program, but at this time, facilities are so limited that we can offer no aid to farmers. However, several of the commercial farm management companies are offering the service.

"When questioned as to the possibility that machines could now be counted on to make the decisions in farming, both Becker and Hutton hurried to assure the group that good judgement on the part of the farm operator can not be discounted.

"But judgement based on the results of Linear Programming is better than judgement without it," Hutton said.

Family Night Planned By Farm Women 6

Members of the Society of Farm Women No. Six plan to hold a family night and covered dish social in the Elizabethtown Park on July 26 at 6:30 p.m.

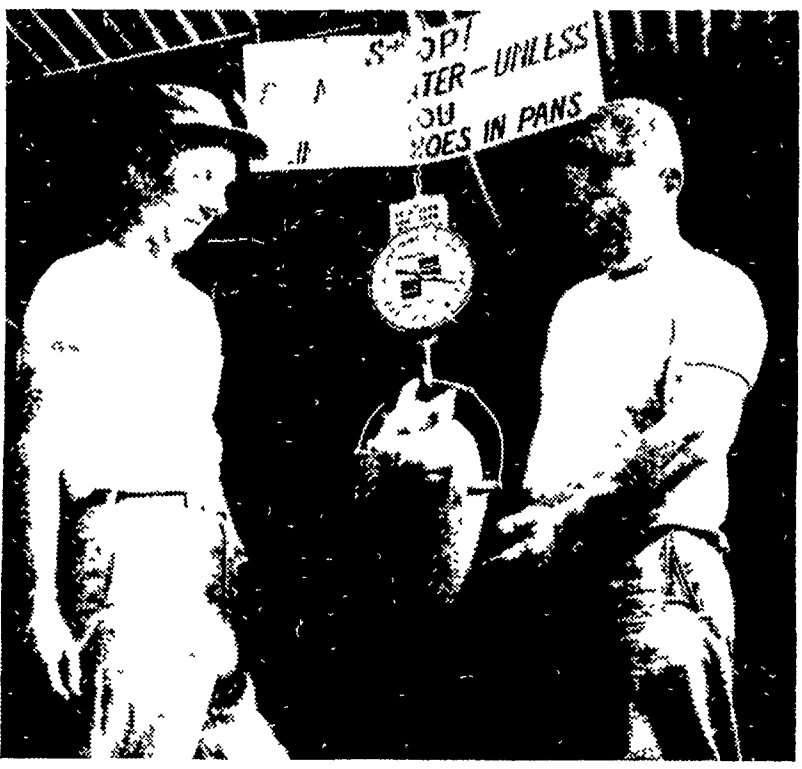
Other features of the July 9 meeting of the group, in the home of Mrs. Jonas Parrett who was also in charge of devotions were pictures of the Hershey flower gardens and the DuPont gardens as well as pictures taken by Mr. John Heisey on his trip to Nova Scotia.

Co-hostesses for the meeting were Mrs. Jonas Parrett, Mrs. Henry Broneman and Mrs. Musser Heisey. News reporter for the group is Mrs. C. R. Frey, Elizabethtown.

According to the National Safety Council the youngsters are the most likely to suffer serious injury on the farm. The five to fourteen year olds have more fatal accidents on the farm than any other age group. Keep an eye on them and keep them away from farm machinery unless they are old enough to understand the danger. Advises University of Delaware agricultural engineer Ernest Scarborough.

More Proof . . . It Pays to Feed PURINA

Willow Glen Farm's Purina-fed Sow Herd



John Henkel, left, and Joe Little, owners, of Willow Glen Farm, R. D. 1, Strasburg.

Big Healthy Litters . . . .



During February, March, and April of this year, 29 first-litter gilts farrowed at Willow Glen Farm. They weaned an average of 9 pigs apiece — big pigs which averaged 2.62 pounds at birth! Their new farrowing house has 30 metal stalls designed and built by Joe and John. Sows leave these stalls twice daily for feed, water, and exercise. Pigs stay here to 3 weeks of age.

. . . And Fast, Early Growth!



This group of 10-12 week-old gilts will average 70 pounds or better. All are candidates for foundation stock. Some will stay at Willow Glen Farm. Others will move into commercial herds.

WE CAN HELP YOU PLAN A SOUND FEED . . . AND MANAGEMENT PROGRAM, BACKED BY PURINA RESEARCH, FOR YOUR HERD.

CALL OR VISIT US FOR DETAILS

- |                                       |   |  |
|---------------------------------------|---|--|
| Blend & McGinnis<br>Atglen            | Ira B. Landis<br>Valley Road, Lancaster | John J. Hess, II<br>Intercourse - New Providence |
| Whiteside & Weicksel<br>Kirkwood      | Warren Sickman<br>Pequea                | Wenger's Feed Mill, Inc.<br>Rheame               |
| Snader's Mill<br>Mt. Airy             | John J. Hess<br>Kinzers - Vintage       | J. H. Reitz & Son, Inc.<br>Litz                  |
| Wingenroth's Feed. Serv.<br>Mount Joy | James High<br>Gardenville               | John B. Kurtz<br>F                               |

