

3 tablespoons salad oil
 1/4 cup wine vinegar
 1/2 teaspoon salt
 Toss ingredients. Chill.
 Serve in sauce dishes. Makes
 4-6 servings.

Gelatin salads are always a favorite—to say nothing of how refreshing they are on a hot summer day. Just to look at this emerald green St. Pat's Salad makes you feel cool.

ST. PAT'S SALAD
 2 packages lime-flavored gelatin
 1 cup boiling water
 1 cup liquid from canned

peach slices
 2 cups cold water
 1 (1-pound 1-ounce) can of peach slices
 1 cup red or green grapes, seeded and halved
 1 red maraschino cherry

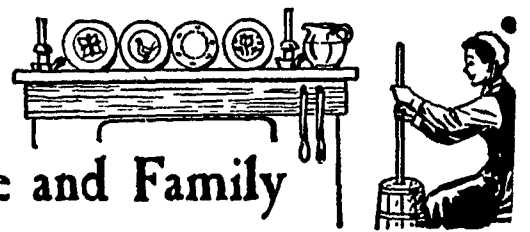
Dissolve gelatin in boiling water. Add peach liquid and cold water; mix well. Pour small amount of mixture into bottom of mold that has been rinsed in cold water. Let chill until partially set. When set, press peaches into gelatin in bottom of mold and place a maraschino cherry in center. Chill remaining gelatin until partially

set. Dice peach pieces not used in decoration. Add these and sliced grapes to gelatin. Pour into mold and chill until set. Unmold on serving plate and surround with lettuce leaves filled with cottage cheese.

Tuna, ever popular and so versatile, combines with tomato juice for a colorful and tangy salad that's easy on the budget and cool for a warm day.

TUNA TOMATO MOLD
 7-oz. can chunk-style tuna
 2 tablespoons chopped onion
 1/2 cup coarsely chopped celery
 2 tablespoons chopped parsley
 1 envelope unflavored gelatine
 1/4 cup water
 18-oz. can tomato juice.
 1 tablespoon Parmesan cheese
 1/2 teaspoon oregano

Combine tuna with onion, celery and parsley. Soften gelatine in cold water, add to tomato juice, Parmesan cheese and oregano. Heat,



For the Farm Wife and Family

stirring constantly until gelatin and cheese are dissolved. Combine with tuna mixture and pour into one-quart greased mold. Chill until firm.

RIBBON SALAD
 3-oz. package strawberry flavored gelatin
 1 envelope unflavored gelatin
 1/4 cup cold water
 1-pound can fruit cocktail, drained (reserve syrup)
 1/2 cup syrup from fruit cocktail
 1 pint creamed cottage cheese
 3-oz. package lime flavored gelatin
 Lightly oil a 9x5x3-inch

loaf pan. Prepare strawberry gelatin according to package directions. Pour into pan and chill until firm. Soften unflavored gelatine in cold water; bring syrup to a boil, remove from heat and dissolve unflavored gelatine in syrup. Stir into cottage cheese. Add drained fruit cocktail and spread this mixture evenly over strawberry gelatin. Chill. Prepare lime flavored gelatin according to package direction; chill until mixture mounds when dropped from a spoon. Pour over cheese layer. Chill to unmold; loosen edges with spatula, dip pan into hot water for a few seconds only and invert on serving plate (Turn to page 8)

KILL! KILL!
RATS & MICE the Easy Way
 USE...
RAT KAKES

with WARFARIN
 Ask your dealer or
BONNYMEADS CHEMICALS, Lititz

Market Egg Producers—
EFFICIENCY PAYS

DO YOU KNOW THAT:—

- A 12 1/2% improvement in feed required per dozen eggs equals a saving of \$9.00 per ton?
- That our Early Bird #26 All Mash Laying feed will definitely produce Better Shell Quality over the laying year?
- That each 1/2% improvement in breakage can improve your income by \$36.00 per 1,000 hens housed?
- That Lighter Colored Uniform eggs traditionally command a Better Price. A price improvement thru better grade of 1/2 cent per dozen amounts to approximately \$100.00 per 1,000 hens housed?
- That it's not the START, it's the FINISH that counts. If your feeding program gives you 1% better hen house liveability and 1/2 dozen more eggs per hen housed, it can mean as much as \$200.00 extra return per 1,000 hens?
- That GOOD records pay big dividends? Without accurate records you CAN NOT fairly judge the value of your program?

Early Bird Feeds and Good Management

A WINNING COMBINATION FOR ANY POULTRYMAN

Contact your Miller & Bushong Service Representative or call us direct at Lancaster EXpress 2-2145.



— *Finest Poultry Service Anywhere* —



Miller & Bushong, Inc.

Rohrerstown, Pa.

Ph. Lancaster EX 2-2145

Manufacturers of Poultry and Livestock Feed Since 1875

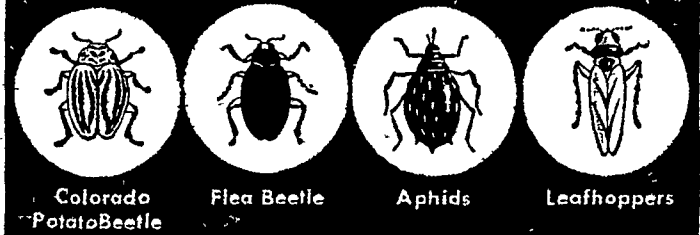
Potato Growers You Need



Thiodan

The new broad range insecticide

KILLS ALL COMMON POTATO PESTS



With this important new chemical discovery—Thiodan—you get a multiple kill of several potato pests at the same time. This means one shot control which, of course, is a more economical way to protect your crop.

Thiodan is a concentrate. Just mix with water and apply with ground or air spray equipment. And Thiodan is compatible with all commonly used fungicides. Its effectiveness has been proved over several seasons.

Ask about other

Fine **MILLER** Products

- "658" Fungicide (Copper-Zinc-Chromate) For Early and Late Blight
- Nutri-Leaf "60" — feeds plants through foliage, a wonderful supplement to ground fertility.

Available at your local dealer or



Miller Chemical & Fertilizer Corporation
 P. O. BOX 25, EPHRATA
 Phone RE 3-6525

ROHRER'S—

can supply you now with
THIODAN

NUTRI-LEAF - "658" Fungicide
 also a complete line of Miller
INSECTICIDES — FUNGICIDES

P. L. ROHRER & BRO., INC.

SMOKETOWN, PA.

Ph. Lanc. EX 7-3539