

● **Granges**
(From page 1)

Roebuck Foundation. Granges are competing for \$60,000 in contest awards. Experience shows that a well-planned active, long-range community service program builds Rural America.

To assist the Grange Community Service Committees, an informative type of meeting was held at the Pennsylvania Power & Light Co. Building, Lancaster on June 9, H. E. Higgins, Industrial Research Representative of the Company, outlined important steps to follow in conducting a well-organized

long-range community service program. He emphasized the importance of presenting the complete story to the contest judges, when submitting the final report. Alfred Wanner, Grange Deputy, stressed the importance of Granges carrying on worthwhile community service projects.

Granges represented at the meeting were as follows: Fulton Grange #66, Salisbury Grange #1685, Cole-rain Grange #1667, Ephrata Grange #1815, and Heidelberg Grange #1504. E. M. Molloy, Manager - Business Development and R. E. Green, Farm Specialist, repre-

sented Pennsylvania Power & Light Company at the meeting.

Farm Prices Are Down From April But Over 1959

Figures just released by the Pennsylvania Crop Reporting Service show that the prices received by farmers declined during May from the previous month, but in general are running well above the levels of a year ago.

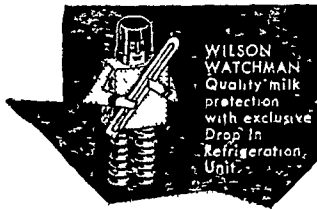
Prices received by Pennsylvania farmers in mid-May for agricultural products averaged 3 percent below a month earlier but were seven percent above May 1959. The seasonal decline in wholesale milk price coupled with lower egg prices were mainly responsible for the decline in the all commodity average from last month.

ceived which is the barometer of farm income, was 231 per cent of the 1910-14-100 base. This compares with 237 a month earlier and 215 a year earlier.

The Index of Prices Received for livestock and livestock products averaged 4 per cent below a month earlier but 4 per cent above mid-May 1959. Lower prices for wholesale milk, eggs and turkeys more than offset the price increases in most meat type animals. The mid-May average of wholesale milk was indicated at \$4.35 per cwt., the same as a year ago but 25 cents less than in April. Egg prices in mid-May, averaging 37 cents per dozen, were 6 cents lower than a month earlier but 9 cents higher than a year ago.

Prices received for all crops as a group in mid-May averaged 2 per cent above prices in mid-April and 17 per cent above a year earlier. Mainly responsible for the increase in the mid-May

average this year was increases in apple and potato prices which more than offset the slight decline in hay prices and most feed grains.



Your milk quality goes up... when he drops in!

Wilson's drop-in refrigeration unit provides magnificent day-after-day performance security for your milk check. When necessary—if ever—a replacement refrigeration unit can be "dropped-in" in minutes.



- Glacier-Cooling system cools milk instantly and keeps it cool — yet never freezes milk
- Magic-Mist makes cleaning quick and easy
- Prevents formation of milkstone



WILSON

Keeps Cool in Any Emergency

L. H. BRUBAKER

350 Strasburg Pike, LANCASTER LITITZ, R. D. 3

Snavely's Farm Service

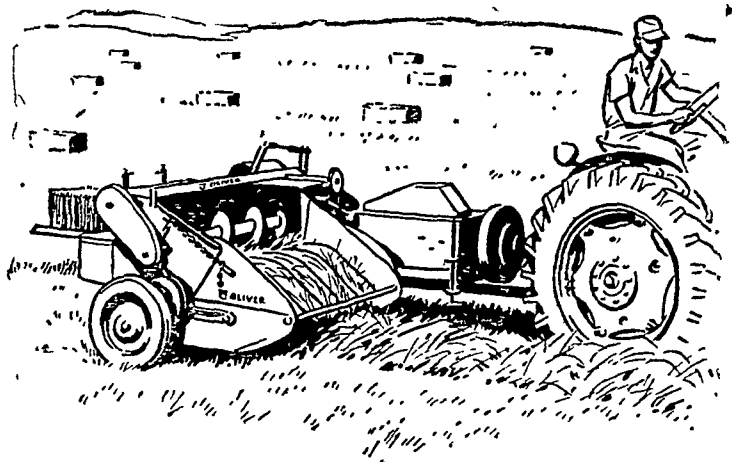
NEW HOLLAND Phone EL 4-2214

OLIVER 60-T and 60-W

Twine-Tie and Wire-Tie

BALERS

All-Around Tonnage Champs with "Pivot-Balanced" Drive



Match a new Oliver—twine-tie or wire-tie—with any other machine in your small, rough, patch-pattern fields. There's where it gobbles up the windrows, bales up to ten tons per hour as easily as on the straightaway.

You get Oliver's exclusive "pivot-balanced" drive and exceptionally short coupling. Just follow the windrow with the rear tractor wheel—even around the sharpest corner. Your Oliver gets the hay... saves hours of time when time counts most.

Here are balers with everything: new, leaf-saving pickup...swinging drawbar for safe transport...overrunning clutch (extra)...protective devices for all important units. You can adjust bale length in seconds—from 12 to 50 inches. Twine- and wire-tying units are easy to interchange, and an engine (extra) is easy to mount when desired.



G. E. Busler
Peach Bottom, Pa.

N. G. Hershey & Son
Manheim, R. D. 1

Farmersville
Equipment Co.

Chas. J. McComsey
& Sons

Ephrata, R. D. 2

Hickory Hill, Pa.

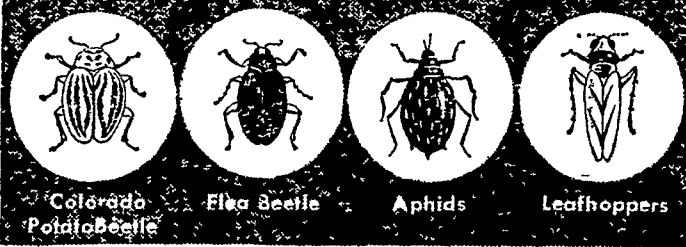
Potato Growers You Need



Thiodan

The new broad range insecticide

KILLS ALL COMMON POTATO PESTS



With this important new chemical discovery—Thiodan—you get a multiple kill of several potato pests at the same time. This means one shot control which, of course, is a more economical way to protect your crop.

Thiodan is a concentrate. Just mix with water and apply with ground or air spray equipment. And Thiodan is compatible with all commonly used fungicides. Its effectiveness has been proved over several seasons.

Ask about other

Fine **MILLER** Products

- "658" Fungicide (Copper-Zinc-Chromate) For Early and Late Blight
- Nutri-Leaf "60" — feeds plants through foliage, a wonderful supplement to ground fertility

Available at your local dealer or



Miller Chemical & Fertilizer Corporation

P. O. BOX 25, EPHRATA
Phone RE 3-6525

ROHRER'S

can supply you now with
THIODAN

NUTRI-LEAF - "658" Fungicide

also a complete line of Miller
INSECTICIDES — FUNGICIDES

P. L. ROHRER & BRO., INC.

SMOKETOWN, PA.

Ph. Lanc. EX 7-3539



SUCCESS IN CANNING

For success in canning, the homemaker needs to use the correct method of processing for the food, points out Louise Hamilton, Pennsylvania extension nutrition specialist. The pressure canner is the safest and best way to can all nonacid vegetables. Ten pounds pressure (at a temperature of 240 degrees Fahrenheit, which is needed to process the foods) in a boiling water bath is the way to can all fruits, tomatoes, and pickled beets. The open kettle method is recommended only for pickles and jellies while the oven is safe for all canning.

Classified Ads Get Results



You save money with our Texaco "All-Star" heating oil service!

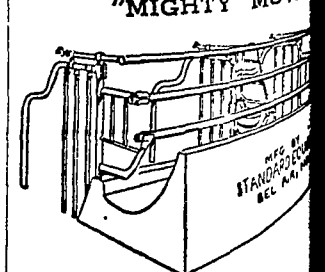
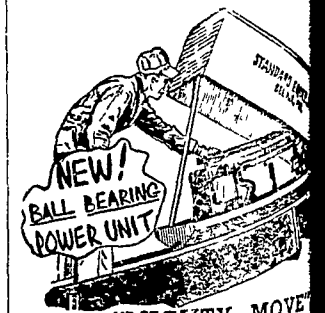
GARBER OIL CO.

105 Fairview St.
MOUNT JOY, PA.
Ph. OL 3-2021

Standard Equipment Incorporated
ANNOUNCES ITS

6% BIG SPRING DISCOUNT SALE

Mighty Move Barn Clean Easy All Comfort Stalls
Sale Closes June 30, 1960



"EASY ALL" Cope & Weaver
WILLOW STREET
Phone Lanc. EX 3-2824