

Fly Time
(From page 1)

lightly into the hair. Malathion treatment may be repeated at 10 to 14 day intervals, but should not be applied to milk cows later than five hours before milking.

Methoxychlor will give effective control of horn flies, but has been inconsistent against stable and horse flies. The 50% Methoxychlor dust may be applied to any dairy cattle in much the same manner as Malathion is used, but the Methoxychlor sprays should NOT be used on dairy cows producing milk. Ronnel gives effective control of horn flies. It should not be used on dairy cattle

and if it is used on beefings during spraying and cattle it should be applied keep them out until the eight weeks before slaughter spray dries.

House flies have shown some resistance to ronnel and Diazinon on many dairy farms. Poor control with either of these insecticides may indicate that the strain of flies is resistant to the chemical. Further use of the chemical on this particular strain of flies would probably be of little value.

Diazinon and ronnel may be used as a residual spray in most farm buildings except poultry houses, milk houses and human dwellings. Manufacturer's instructions as to rate of application should be followed carefully, and be sure to remove all animals from the build-

The spray operator should wash his hands carefully after handling these insecticides and with Diazinon, a suitable respirator should be used. Do not use Diazinon near poultry.

With careful application of chemical insecticides, fly populations can be controlled, but sanitation and prevention of infestations is still the best control measure, entomologists say.

Advertisers will be glad to have you mention Lancaster Farming when answering advertisements.

Dairy Products Cheap, Plentiful

"You name it, we have it," may well be a slogan at many food stores, particularly when it comes to dairy products.

Milk is always a good buy in food value. And during June Dairy Month, why not find new ways to increase the amount of milk in your family's diet. Mrs. LaRue A. Hefner, extension nutrition specialist at the Pennsylvania State University, suggests you do it by adding more of the dairy products to your menu plans.

There's a place for some dairy product in every meal of the day and in the meals between-meals. Serve dairy products "as is" or combine them with other foods for main dishes, salads, casseroles, sauces, garnishes, and dessert. Use them in cooking and baking.

Dairy products are versatile, taste good, look good, and are good for you — a perfect combination for a perfect food. They give excellent returns in high-quality protein, calcium, riboflavin, and other vitamins and minerals.

Swallowing your pride will never give you indigestion.

A person with charm is one who can make another feel that both of them are pretty wonderful people.

ISOTOX Transplanter Solution (contains Lindane)



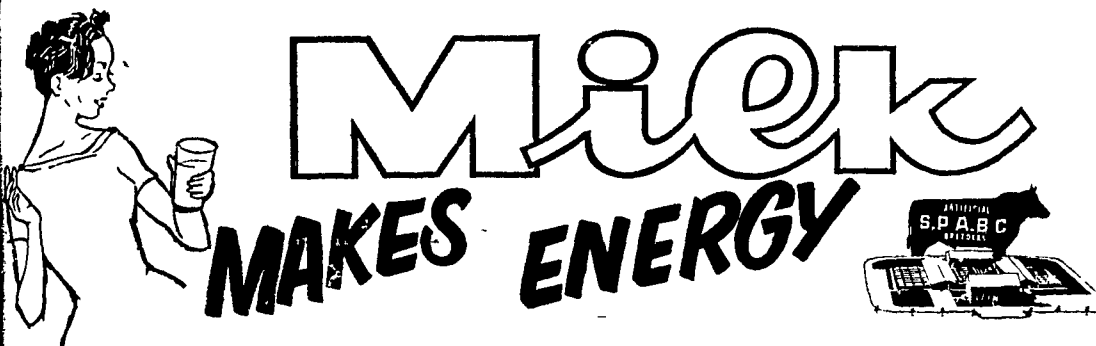
- use against wireworms and other soil insects.
- saves re-setting
- increases crop yields
- allows roots to develop and plants to become established
- mixes readily with water
- a true Colloidal Suspension, not an oil base emulsion.



T.M.'s REG. U. S. PAT. OFF. ORTHO, ISOTOX

P. L. ROHRER & BRO., INC.

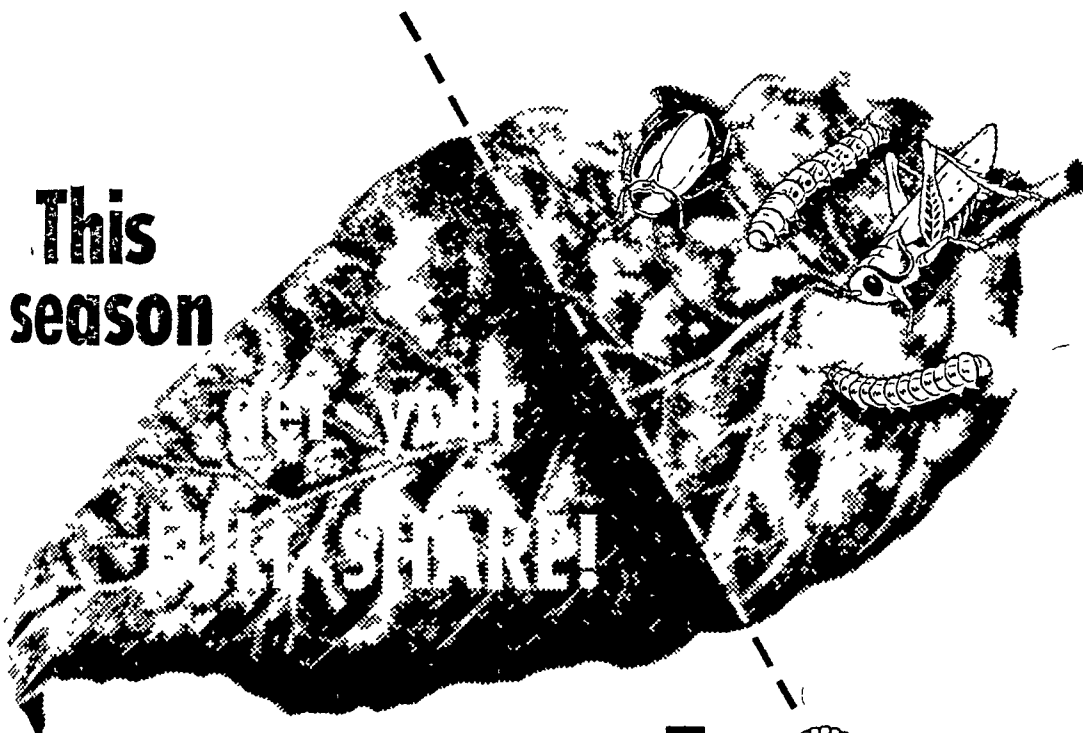
SMOKETOWN, PA.
Ph. Lanc. EX-7-3539



Your Cooperative Breeding Program plays a major role in the progression of today's Dairy Industry.

Southeastern Penna. Artificial Breeding Coop.

P.O. Box 254, Lancaster, Penna. Phone EX 2-2191



This season

Use endrin

DON'T LET TOBACCO PESTS steal your profits. Get them fast and keep them under control with Shell endrin. Endrin kills hornworms, budworms, fleabeetles, grasshoppers, cutworms, and many other harmful insects. Protects tobacco crops and lets you get your full share of profits.

Shell endrin is easy to apply. It's available as a spray or dust. And it's economical. Shell endrin pays for itself many times over in better quality tobacco.

Your local insecticide dealer stocks Shell endrin under well-known brand names. See him today and get your full share of profits at harvest.

SHELL CHEMICAL COMPANY

AGRICULTURAL CHEMICALS DIVISION
110 West 51st Street, New York 20, New York



TOBACCO GROWERS

ENDRIN is available as a liquid, wettable powder or dust thru your local dealer or at our Ephrata plant

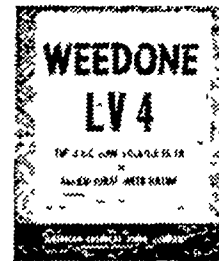


Miller Chemical & Fertilizer Corporation

P. O. BOX 25, EPHRATA Phone RE 3-6525

Farmers Prefer Weedone LV4

THE LOW VOLATILE ESTER 2,4-D



Proved one of the most efficient weed killers for pre-emergence spraying in corn. Also recommended as a post-emergence spray.

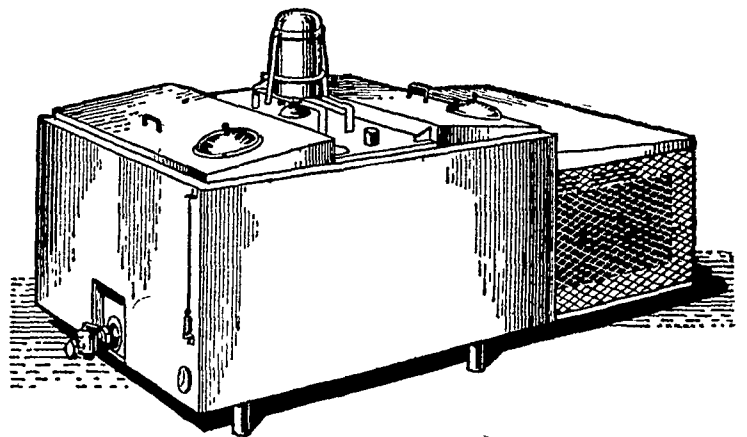
1 gallon can \$ 4.95
5 gal. can \$24.25

Special Prices on Quantity Orders and to Custom Sprayers.

P. L. ROHRER & BRO., INC.

SMOKETOWN Phone Lanc. EX 7-3539

Jamesway. SANI-KOOL BULK MILK COOLERS



LOWEST LINE IN THE INDUSTRY

Here's a great new line of coolers — direct expansion type — to meet every need. Seven models to choose from in self contained and remote control units. Many exclusive features.

- Low height . . . 32 inches . . . means easy effortless pouring.
- Fast cooling, low blend temperatures on subsequent milkings.
- Heavy, stainless steel inner and outer tank. Big radius round corners in inner tank. Recessed drain.
- Greaseless agitator motor. No drip or seepage. Dry gears.
- Remote control panel at eye height. Switches stay dry, even during wash-down of milk-houses. Out of way of children.
- Made in 160 gallon to 500 gallon capacities.

See these new Jamesway Coolers before you buy. You'll be glad you did. They're designed right, built right . . . for years of service.

LANDIS BROS.

MANHEIM PIKE, LANCASTER

PH. EX 3-3906