



OAMC - 9 MODEL 51 is one of the herd sires at Willow Glen Farm. High quality breeding stock like this has helped to get the program off to a good start. Two of the litter mate boars of this sire were shown at the 1960 Yorkshire Type conference at Stillwater, Oklahoma where one was named Grand champion and the other Reserve champion. One gilt from the same litter was champion August gilt at the same show. The boar was bred at the Oklahoma Agricultural and Mechanical College.

● Willow Glen

(From page 7)

ected, and a shot of soluble iron compound injected into his ham.

The only thing the pig has to do is help himself to the sow's milk and the starter pellets in the self feeders in the crate at all times, and lounge in the warmth of the gas-fired pig blanket.

The pig blankets are constructed of two layers of metal with mineral oil between. The oil become heated and spreads the warmth over the entire pig area of the crates.

When the pigs are three weeks old, they and the sow are moved out of the farrowing crates into other crates where the pigs have more room and larger feeders and water fountains. Here they will stay until weaning time when they will go to the feeding barn, and the sow will return to the pasture.

Each litter remains a separate unit on the farm from the date of birth until market weight. In this way the record of the sow can be more complete, even though the pigs are ear notched at

farrowing time to identify them.

Henkel and Little have had to do extensive interior remodeling of the poultry houses which were built on the farm by the previous owner, but they feel fortunate that very little had to be done to the exterior of the buildings.

Willow Glen Farm has only about thirty acres of land, but the partners feel that this will be enough for their purpose. A commercial hog ration will be mixed with corn which will be bought on a contract basis locally. About five acres of corn will be planted for silage to be fed to the sows, but the rest of the acreage will be seeded to a mixture of Ladino clover and orchard grass for pasture.

Complete, accurate records and attention to details along with outstanding foundation stock is the formula for success being applied on the farm, and John Henkel and Joseph Little have every right to be optimistic about the outcome.

PAVE BARNYARDS

Paving your barnyard can eliminate those springtime mud problems. So say Penn State extension agricultural engineers. Other benefits include more efficient gains by animals fed on a paved lot as compared with a muddy lot, and saving of manure as well as easier cleaning of the barnyard.

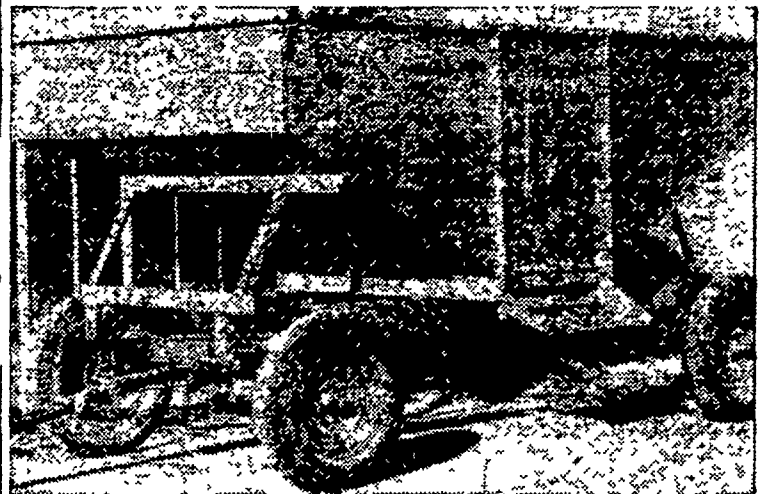


SOWS IN THE SHADE on good pasture are content to lie and relax. Self feeders and waterers are placed at a distance from the shelters so that the bred sows are forced to get some exercise during the gestation period. Sows are kept on pasture at Willow Glen during the entire year except the eight weeks they are in the farrowing crates.

McCurdy Gravity Flow Grain Box

WITH THE EXCLUSIVE

MONEY SAVING WHEEL OPERATED DOOR LABOR SAVING



Model 500 A

HANDLES EAR CORN - SHELLED CORN - GRAINS BEETS - SEEDS - POTATOES - AND OTHER HARD GARDEN AND ORCHARD PRODUCE

Here it is! The sensational McCurdy Wheel Operated gravity flow crop handler. The unanimous choice of every farmer who has seen its operation. A wheel operated, locking rack and pinion gear device provides the last word in smooth, positive door operation. Door is easily locked at any opening and is automatically released by backing wheel slightly. The demand for this feature has been overwhelming.

You will be pleased with the way the labor-saving McCurdy easily and economically handles and transports farm crops. Be sure to see a McCurdy before you buy. IT PAYS.

HERR'S IMPLEMENT STORE

WEST WILLOW, PA.

Ph. Lanc. EX 3-8311

Before You Buy Any Hay Machine



See The New Meyer Hay Conditioner



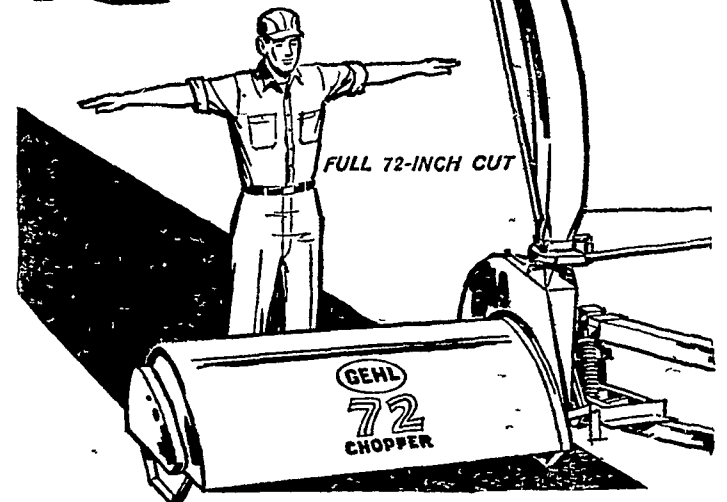
J. PAUL NOLT
Lincoln Hwy., Gap, Pa.

USED CRUSHERS AND CRIMPERS FOR SALE

"The building stone with the quarried stone appearance"

HOLLAND STONE
MADE IN THE PENNSYLVANIA DUTCH COUNTRY
NEW HOLLAND CONCRETE PRODUCTS, INC. NEW HOLLAND, PA.

NEW! GEHL 72 CHOPPER



6-foot chopper at a 5-foot price

A full 6-footer for the forage harvest and green chopping plus all a shredder can do. Big, big capacity—PTO-powered with 72 inches of rotating flails and a knife-edged fan to double-cut the crop and keep 6 feet of swath sailing into the wagon. Loads it trigger-quick way back to the wagon corners. No fan threshing or crushing! Cuts and chops at the flails . . . chops finer at the fan. Up to 1/3 more capacity than most flail choppers. It's Gehl built . . . durable, and is actually priced below most 5-foot machines.

GEHL PUTS ALL THE PRICE FACTORS IN YOUR FAVOR



FARMERSVILLE EQUIPMENT COMPANY

R. D. 2, EPHRATA

EL 4-9221