

**● Try Chocolate**  
(From page 9)

1 egg yolk  
1/4 cup soft butter or margarine  
Melt chocolate over hot water. Remove from water and cool to lukewarm. Add sugar and hot water and stir to blend. Beat in egg yolk. Add butter or margarine and beat till light. Cut in 2" squares. Makes 16 squares.

**SAUCEPAN BROWNIES**

1 stick (1/2 cup) margarine  
2 squares (1 oz. each) unsweetened chocolate  
1 cup sugar  
1 cup broken pecans  
1/2 cup flour  
1 teaspoon baking powder  
1 teaspoon vanilla  
2 eggs  
Rub bottom of a 9-inch square pan with margarine. Melt margarine and chocolate in a saucepan. Remove from heat. Add all ingredients except eggs. Mix to blend. Add eggs and beat well. Pour into prepared pan. Bake in a moderate oven (350 degrees) 30 minutes. Do not overbake. Do not burn. Cool in pan. Cut into bars at serving time.

**FILLED MOCHA CHIFFON CAKE**

flour  
1 tablespoon baking powder  
1/2 teaspoon salt  
1 cup sugar  
1/4 cup concentrated soluble coffee  
2 tablespoons cocoa  
2 1/4 cups sifted enriched flour  
1/2 cup salad oil  
5 egg yolks  
3/4 cup water  
1 cup egg whites (7or8)  
1/4 teaspoon salt  
1/2 cup sugar  
Whipped Cream Filling  
Sift together flour, baking powder, salt, 1 cup sugar, coffee and cocoa. Make a

well in center and add in order, salad oil, egg yolks, and water. Beat until smooth. Add salt to egg whites. Beat until soft peaks form. Add 1/2 cup sugar gradually and continue beating until stiff, glossy peaks are formed. Slowly pour egg yolk mixture over meringue. Gently fold until mixture is well blend-

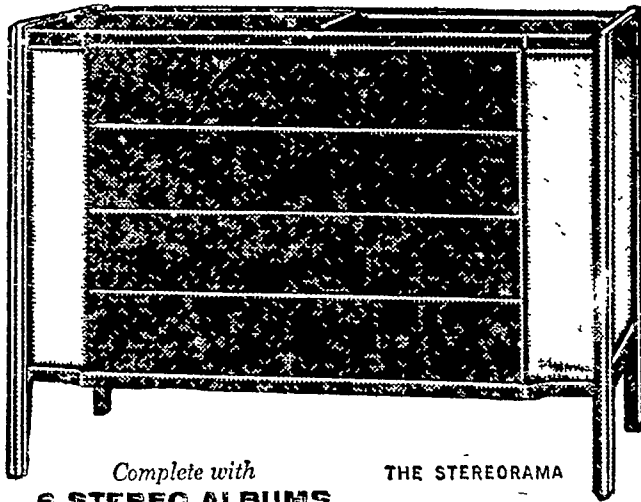
ed. Turn into ungreased 10-inch tube pan. Bake in slow oven (325 degrees) about 1 hour. Invert cake and cool about 1 hour. When cake is cool, cut horizontally into 3 equal layers. Fill with Whipped Cream Filling. Dust top of cake with confectioners' sugar.

**WHIPPED CREAM FILLING**  
1 cup whipping cream  
3 tablespoons sifted confectioners' sugar  
(Turn to page 11)

**BUY NOW!**

**DURING OUR EXCITING 1960**

**Magnavox Stereo-Rama**



Complete with THE STERORAMA & STEREO ALBUMS

Today's most spectacular stereophonic high fidelity FM/AM Radio Phonograph value complete with 6 stereo albums

ALL FOR ONLY \$239.50 in mahogany

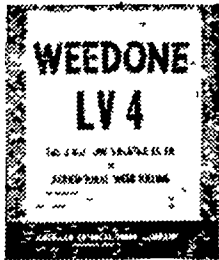
**GLICK'S AUDIO SALES**

2320 HOBSON ROAD SMOKETOWN, PA.  
EX 3-7242

Open Tues. to Sat. 9 - 5; Friday 9 - 9; Closed Monday

**CONTROL WEEDS**

WITH



**Weedone LV-4**

1-gal Can 4.95  
5-gal Can 24.25

**Weedar 64 (Amine)**

1-gal Can 3.10  
5-gal Can 14.75

Simazine 80% Wettable  
Atrazine 80% Wettable  
Atrazine Granular

**SPECIAL PRICES TO CUSTOM SPRAYERS**

**Methoxychlor**

the recommended spray for spittle bug and weevil control in forage crops.

Available now in 5-gal. cans and 30-gal. drums

**INCREASE YIELD** and improve quality of your hay crops by adding to your spittle bug spray.

**Nutri-Leaf (20-20-20)**

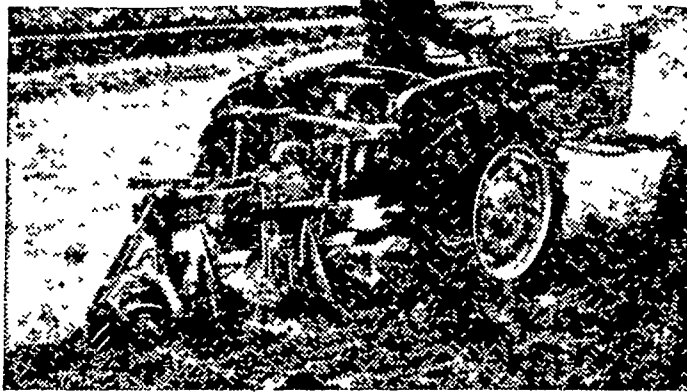
5 lbs 1.75  
25 lbs 7.50

**P. L. ROHRER & BRO., INC.**

SMOKETOWN, PA.  
Phone EX 7-3539

**Want more Pull Power?**

...try a



**NEW 2-ROW D-12 TRACTOR**

★ Right combination of power and speed for heavy-duty tillage

★ Bulldog pull for transplanting and other slow-speed precision work

**TEST DRIVE**

a new Allis-Chalmers D-12 Tractor

Ask us about the Allis-Chalmers plan to finance your time purchase of farm equipment.

**ALLIS-CHALMERS** SALES & SERVICE

**Snavelys Farm Service**  
New Holland, Pa.

**L. H. Brubaker**  
Lititz, Pa.

**Nissley Farm Service**  
Washington Boro, Pa.

**Mann & Grumelli Farm Serv.** **R. S. Weaver**  
Quarryville, Pa. Stevens, Pa.

**L. H. Brubaker** **N. G. Myers & Son**  
Lancaster, Pa. Rheems, Pa.

For the Most Markets Read Lancaster Farming

**Do You Know That**

**The SHAVER**  
**★ STARCROSS**  
**288**

Leghorns, outlaid all other Nationally advertised strains, both on The Floor and Cages, at the 1959 California Random Sample Test:

285 eggs (per bird housed) on Floor

261 eggs (per bird housed) in Cages



These birds really roll out the eggs.

You owe it to yourself to try them!

**GREIDER**  
**LEGHORN FARMS, Inc**

MOUNT JOY, PA.

OL 334



**PRESERVE YOUR SILAGE WITH LANCASTER Sweet Mix**

**A Blend of Molasses — Convenient and Economical — An Ideal Preservative**

Lancaster Sweet Mix can be fed into chopper or blower, spread in silo or added in field as silage is loaded

Add at these rates:

Chopped grasses—100-150 Lbs. per ton  
Mixed Grass-Legumes — 150-200 Lbs per ton  
Legumes — 200-300 Lbs. per ton

**BEFORE YOU FILL YOUR SILO** see us for complete details and price.

**A. S. GROFF** **AMMON E. SHELLY**  
21 S. Queen, Lancaster, Pa R. D. 2, Lititz, Pa.

**MUSSER'S** **WARREN SICKMAN**  
The Buck, R 1, Quarryville H. D. 1, Pequea, Pa.

**CHAS E. SAUDER & SONS** **I. C. WALKER & CO.**  
R. D. 2, East Earl, Pa Gap, Pa.

**E. MUSSER HEISEY**  
R D 2, Mount Joy, Pa.