

## PUBLIC HORSE SALE

BLUE BALL, PA.

MONDAY EVENING, APRIL 18, 1960

### Load of Kentucky Horses

Yearlings: Two Year Olds: 3 and 5 gaited. Pleasure and Driving Horses: Show Prospects. Standard Bred. Quarter Horses and Ponies.

Horses sold on commission.

Tack sold at 6 p.m. - Horses at 7 p. m.

PAUL Z. MARTIN Sales Stables

## Maryland Hereford Breeders Association

# SPRING SALE

## OF BREEDING CATTLE

### April 21st-12:30 Sharp

At the Baltimore Livestock Auditorium midway between Frederick and Baltimore on U. S. 40.

#### SELLING 280 LOTS

Registered Polled and Horned Herefords

20 BULLS

100 COWS WITH CALVES AND REBRED

100 BRED HEIFERS

60 OPEN HEIFERS

The cattle offered will be in excellent breeding condition. Ready to be turned out in pasture.

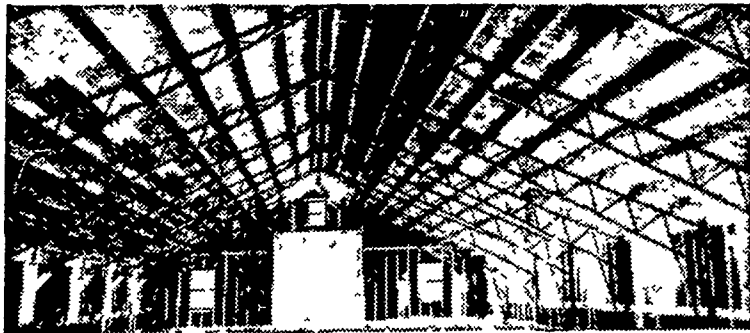
All animals from accredited herds and tested for Bangs and T.B. within 30 days of sale. Can go anywhere.

For catalog Write or Wire

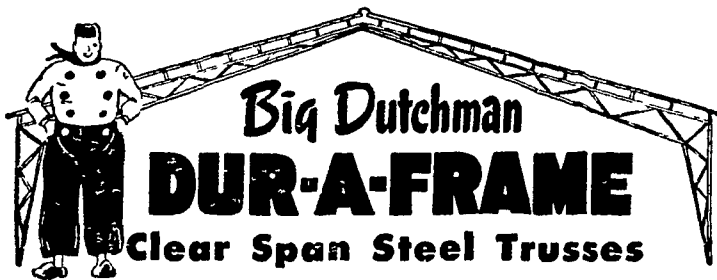
HAROLD SCHROEDER, Sale Manager

ROUTE 1, GAITHERSBURG, MD.

Phone: Damascus, Clearwater 3-3161



## BEFORE you build INVESTIGATE



- ✓ wall-to-wall post-free interior
- ✓ 34, 40, 50, 60, 70-ft. CLEAR spans
- ✓ easy, fast, 3-bolt assembly
- ✓ economical—designed for use with standard materials and sizes

#### SIZES

Side Wall	Clear Span	Side Wall	Clear Span
6' x	34'	8' x	50'
6' x	40'	14' x	50'
8' x	40'	8' x	60'
12' x	40'	16' x	60'
16' x	40'	8' x	70'

#### UNLIMITED APPLICATIONS

Warehousing • marinas • cement block storage • loafing barns • machine sheds • poultry buildings • grain storage • airplane hangers • produce storage • light & heavy manufacturing • used car lots • restaurants • bowling lanes • school bus barns • and dozens more!

## Big Dutchman DUR-A-FRAME Division

407 W. Washington • Zeeland, Michigan

CONTACT YOUR LOCAL DEALER TODAY!

# KUIPERS BROS., Inc.

NEW HOLLAND

Phone EL 4-5111

## Guernsey Club Elects Ferguson

Ross Ferguson, Kirkwood R1, was elected president of the county 4-H Guernsey Club at the meeting in the Solanco High School Agriculture building Wednesday night.

Retiring president, Kenneth Young, Mount Joy R1, was elected junior leader and representative to the county 4-H council.

Other officers elected were vice president, Mary Ellen Mumma, Manheim R1; secretary, Elaine Stoltzfus, Ronks R1; treasurer, Dorothy Garber, Willow Street R2, song leader, Terry Ben-

### • Witmer

(From Page 1)

Poorbaugh, York R3, secretary - treasurer.

Harold Bollinger, Sheridan Lebanon County was named to his first term on the executive committee. Re-elected to the committee was Lewis W. Phipps, Wilmington, Del.

Witmer, elected unanimously in the absence of any other nominees for the post has served on the board of directors of the cooperative since 1953. Risser and Poorbaugh were also unopposed.

Witmer brings to the office his experience as president of the Eastern States Farmer's Exchange, Springfield, Mass. during the years 1957 and 1958. He has served on the board of directors of that organization for 28 years.

The owner of a 400 acre farm at Dalmatia R1, Witmer has a string of 100 registered Guernseys, operates a hatchery with a half million bird capacity per year, and manages his own fruit farm.

Retiring president Groff, retained his directorship in the organization at a hotly contested election earlier this year.

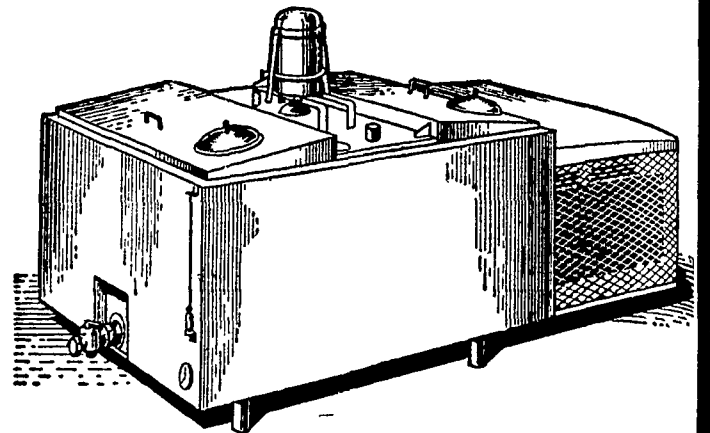
der, Landisville; news reporter, Karl Bender, Landisville; game leaders, Richard Ankrum, Peach Bottom and Reba Bushong, Columbia R2

Adult leaders of the group are Harry Mumma, Manheim R1, Melvin Stoltzfus, Ronks R1, Ellis Denlinger, Gordonville R1, Paul Ankrum, of Peach Bottom and Robert McSparran, Peach Bottom.

## PRUNE FRUIT TREES

A pruning sequence is suggested by Carl Bittner, Pennsylvania State extension pomologist. Start on bearing apple and pear trees; do the young trees later. Then work on sour cherries. Leave the sweet cherries and peaches until last. Grapes may be pruned in late fall, winter or early spring.

## Jamesway. SANI-KOOL BULK MILK COOLERS



### LOWEST LINE IN THE INDUSTRY

Here's a great new line of coolers—direct expansion type—to meet every need. Seven models to choose from an self-contained and remote control units. Many exclusive features.

- Low height . . . 32 inches . . . means easily effortless pouring
- Fast cooling, low blend temperatures on subsequent milkings
- Heavy, stainless steel inner and outer tank. Big radius round corners in inner tank. Recessed drain.
- Greaseless agitator motor. No drip or seepage. Dry gears.
- Remote control panel at eye height. Switches stay dry, even during wash-down of milk houses. Out of way of children.
- Made in 160 gallon to 500 gallon capacities.

See these new Jamesway Coolers before you buy. You'll be glad you did. They're designed right, built right . . . for years of service.

## LANDIS BROS.

MANHEIM PIKE, LANCASTER

PH. EX 3-3988



# MASTER MIX SWEET FLAKES

## Advanced Silage Preservative

- Provides rapid production of lactic acid to preserve silage and to prevent undesirable odor.
- Prevents excessive "run off" . . . . Saves as much as 20% of green forage "run off"!
- Increases palatability of silage.
- Increases feeding value of silage . . . Sweet Flakes are bulky and highly digestible cellulose digestibility 92%.

See Your Master Mix Dealer Today

About Special Early Order Booking

Eby's Mill, Inc.  
LITITZ



L. J. Denlinger Co.  
PARADISE

Hempfield Mills, Inc.  
EAST PETERSBURG

Ross H. Rohrer & Sons  
QUARRYVILLE