

is an inexpensive of protein, calcium, B-vitamins — good for bone structure and

Reduce mortality losses **clean up** your poultry house with **Carbola** the disinfecting white paint

Reduce poultry mortality losses! Clean your house and laying house, then spray with the Disinfecting White Paint. Its powerful germicide kills poultry germs. It contains Lindane and Malathion. Kill flies, lice, mites and keep your Carbola dries white. Used as a dust, Carbola neutralizes ammonia fumes. Write for dealer for Carbola today or contact Carbola Chemical Co., Inc. Send for Poultry Management Bulletin and the name of your nearest Carbola Dealer or write to Carbola Chemical Co., Inc., P.O. Box 100, Lancaster, Pa. LF-64.

**Carbola** CHEMICAL CO., INC., Natural Bridge, N. Y. The Poultry Industry for 52 years

## Termite Problem Serious On Farm Says M. M. Smith

Practically every farm in Lancaster County has had or will have some termite infestation, according to County agent Max Smith. "And now is the time they are swarming," he pointed out.

The county agent's office handles many calls each spring from farm families wondering whether the insects they see swarming around their buildings are termites or the relatively harmless winged ants.

Termite damage on Lancaster County farms is far more extensive than most people realize, Smith believes. This is true because of the nature of the insect. The worker termites, the ones which do the damage to wooden structures, are without any pigment or coloring matter in their bodies; therefore, they can not be exposed to the sunlight or direct heat without losing enough body moisture to kill them. The fact that the workers

must remain in the dark, and must return to the soil periodically to replenish their body moisture supplies, sometimes gives the only outward sign of termite infestation in buildings. If no wooden portions of the structures come in contact with the soil, the insects will build long shelter tubes on masonry walls from the ground to the wood. Once inside the wood, the termites may tunnel through beams and joists and weaken them appreciably without making any outward signs on the wood itself.

### Termites or Ants

Many people confuse the winged, sexually mature, termite with the winged ant. While the two insects do look somewhat similar, there are several basic differences in body structure which the average home owner should be able to discern.

Ants can be distinguished from termites by their thin, wasp-like waists in either the winged or the wingless forms. Termites do not have this constricted waistline characteristic of ants. The wings of the termite are of equal length, while in the ant the hind pair of wings are shorter than the front wings.

Only the adult reproducers have wings and color in their bodies. The workers and soldiers are a milky white in appearance and do not develop wings. Both the soldier and the workers are sexually neutral and cannot reproduce.

### How Termites Work

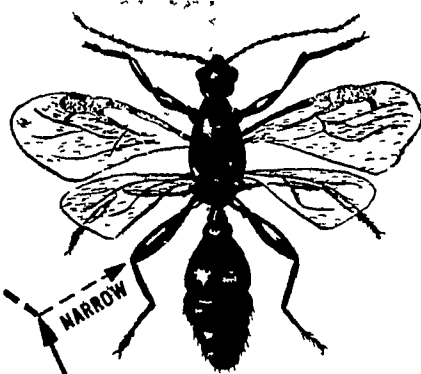
Termites are social insects that live in colonies similar to ants or bees. The adult reproducers swarm in the early spring to mate and establish new colonies. It does little good to spray these swarming insects since only one in

## TERMITE IDENTIFICATION

DON'T CONFUSE

THE Winged Termite

WITH THE Flying Ant



Look . . . at the waistline

TERMITES AND WINGED ANTS are sometimes confused. The ant has a restricted wasp-like body while the termite does not. The body of the termite is not jointed and the wings are of equal length while in the ant, the hind wings are much shorter than the front pair. The wings of both the ant and termite wear off a few weeks after the colony "swarms" in the spring.

several thousands of the swarm can maintain the termite population in an area. Even if all the swarming insects are killed, the infestation will not halt. All colonies have secondary reproducers which do not develop wings but mate in the ground and establish new colonies.

The workers and soldiers are similar in size and appearance, but the head of the soldier is larger and is equipped with large dark brown jaws.

Adult workers are the only caste in the order doing any damage to woodwork. Neither the kings and queens (adult reproducers) (Turn to page 6)

### ● This Week (From page 4)

cent will suffer with the gully.

(Editor's note: The second column in this series will discuss irresponsible procedures of government regulatory agencies.)

## UNLOCK EXTRA FEEDING VALUES IN YOUR GRAIN & ROUGHAGES and turn them into profits with SPECIAL TANVILAC



### WHY INCREASE FEED COSTS?

Why feed 2 lbs. of high protein supplement when 1/2 lb. of Special Tanvilac, per head, daily, with grain and roughage will help give you bigger profits at less cost?

TANVILAC'S AN ECONOMICAL CATTLE AND SHEEP FEEDING PROGRAM THAT WILL MAKE MONEY FOR YOU.

No guesswork when you feed SPECIAL TANVILAC with home grown grains and roughage. Get fast, cheap gains! Get high dress-out percentage! You can — with Special Tanvilac — and at a cost below ordinary feeding methods.

TANVILAC CO. Inc.

C. O. NOLT

LOCAL DISTRIBUTOR

RD-IN-HAND

Phone Lanc. EX 7-0751

**THE BIG DIFFERENCE IN TERMITE CONTROL**

- RELIABLE INSPECTION AND CONSULTATION — WITHOUT COST OR OBLIGATION
- ENDORSED BY PROMINENT ARCHITECTS, BUILDERS AND REALTY INSTITUTIONS
- WORK PERFORMED BY SPECIALLY TRAINED OPERATORS COVERED BY PUBLIC LIABILITY INSURANCE
- DEPENDABLE PROTECTION BACKED BY A RESPONSIBLE ORGANIZATION, ESTABLISHED FOR OVER A QUARTER OF A CENTURY
- COMPLETE PERFORMANCE UNCONDITIONALLY GUARANTEED FOR 5 YEARS, OR LONGER, IF DESIRED
- THE COST OF TERMITE CONTROL IS NOW TAX-DEDUCTIBLE, IF THE INFESTATION IS DISCOVERED AND TREATED WITHIN TWO YEARS FROM OCCURRENCE
- PLAY IT SAFE, LET US INSPECT YOUR PROPERTY NOW — IT COSTS NOTHING TO FIND OUT

J. C. Ehrlich Co., Inc. 736 E. CHESTNUT ST. Lancaster EX 7-3721

## Get HIGH-GRADE POTATOES

with low-cost soil insect control!

USE **aldrin**

Nothing can lower the quality of potato yields as much as an attack by destructive soil insects. That's why you will find it pays to get 'em before they cause damage. Use aldrin!

Easy-to-use aldrin is available as a spray or as granules. Or, you can purchase it in a fertilizer mix for broadcast or row treatments. Whichever application you choose,



you can be sure of low-cost control of cutworms, wireworms, tuber flea beetle larvae, grubs and other harmful soil pests.

This season, get high quality potatoes for high quantity profits. Knock out destructive soil insects with low-cost aldrin. It is available under well-known brand names from your insecticide dealer. Don't delay . . . see him today!

SHELL CHEMICAL COMPANY

AGRICULTURAL CHEMICALS DIVISION 110 West 51st Street, N. Y. 20, N. Y.



**MOUNT HOPE QUEEN**

For over 35 years they have been bred to lay MORE big, high quality eggs, on less feed. First in Feed Efficiency at Penna. "Random Sample" Test; fourth in Profit among 48 entries. First in Nation on Number of Eggs (Florida Test) averaging 303 eggs per bird. Get 100% Mount Hope breeding by going direct to the Franchised Hatchery nearest you. Free Folder.



Johnson's Hatchery

EPHRATA, PA. PHONE RE 3-2980