

# County Youth Reports IFYE Tour To Peru

... Mess, Strasburg R1 is a word that means "Runs" of the fabulous Empire. I find that is a very interesting to a very educational in which, I am making home for six months,

under the International Farm Youth Exchange (IFYE) program. The following story tells the best I can about this fascinating country.

First, let's review Peru's location and its different types of land. Peru is located on the west coast of South America, just below the equator. It is divided by the Andes Mountains and this I find is one big handicap in the development of the country. The mountains are, however, an important fact in Peru's industrial wealth, because here you find many mines. The mineral wealth is tremendous. I have seen a large refinery where the by-products are gold and silver. The main products are lead, zinc, and copper. The amazing fact is, they can obtain as many as 12 or more different metals from one single ore.

Here in this altitude, agriculture is very limited. The elevation at my first home was 12,500 feet above sea level. The main products are potatoes and corn. The only livestock which can stand the height is the smaller animals, such as sheep and pigs. Larger animals get a lung condition and die, even some people have trouble living at

this altitude.

On the eastern side of the mountains you find the jungle and the beginning of the Amazon River. Unfortunately, I didn't get a chance to visit this part of the country, but here lies the future of Peru, if they can find a route over the mountains to transport the products, which range from tropical fruits to the newest experiment, beef cattle. According to the American technicians in Lima, this presents a very profitable venture in the jungle.

The third climatic condition in Peru is found in the lower mountains, the one's that are only about 4,000 to 8,000 feet high. Here you find level valleys that are very rich in agriculture.

In northern Peru there are large dairy farms with 200 to 600 or more cows each. The climate is favorable for pasture the year round, so housing is practically non-existent. Many of the cows are milked on pasture. There are large plants which buy the milk then manufacture it into evaporated milk. This is the most practical and profitable way to handle the milk.

On the coast you find the fourth different climate. In South America the prevailing winds are easterly instead of westerly, as in our country. You find, because of the high mountains, the winds lost all their moisture, so the land on the coast is what we would call desert.

Only where rivers come out of the mountains, can they irrigate and raise cotton and sugar cane as the main crops. Peruvian cotton is known around the world as some of the best cotton raised. The coastal region really offers a great future in agriculture, if they can find the water necessary to irrigate.

Peru has many problems to solve, the main one being the social and labor problem. Labor here is very cheap. Many of the native Indians work for 5 to 10 soles a day, or, in our money about 18c to 37c. The valuable land is usually owned by a rich land owner who lives in Lima. The Indians have very little education, so you find them satisfied to live in a mud hut and work for little or nothing. They don't want to take the responsibilities of managing a farm.

Transportation and communications are also very poor and lacking in most places. Roads are usually mud, the only road that is paved is the Pan American Highway, which runs along the coast. Transportation is one of the main problems in the development of agriculture, because of the lack of

roads to get the products to market.

Health is another very serious problem. Everywhere we go, we are warned not to drink water, because it is unsafe. Very few of the educated people eat or drink anything unless it is boiled or fried. One American, who I met in Lima, told me that this country is at the stage of development that the U. S. A., was at in 1900. This is not only true for Peru, but the rest of South America.

This, however, I can say is not true of Lima, the capital of Peru. Lima is a very beautiful and modern city. Many people describe it as resembling our southwestern cities, like Phoenix, Arizona. Lima is known as the cultural capital of South America. Many big American companies have stores and offices here and also, you find a very modern and large airport.

Peru has the possibilities of becoming a very rich and productive country and I am glad to have a part in trying to promote good will between this important neighbor to the South and our own country. The IFYE goal is world peace through world understanding and this understanding that creates peace, must start at the "grassroots" or family level.

**McCormick Farm Equipment Store**  
 54 S. State Street  
 EPHRATA, PA.  
 Phone RE 3-2283

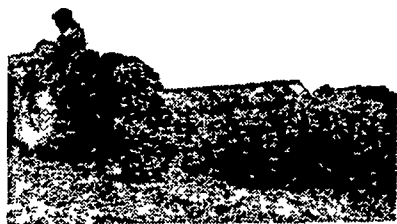
**Tractors and Farm Equipment**  
 All 450 Tractor  
 All 460 Diesel Tractor  
 60 Tractor  
 Farmall

**PLOWS**  
 2-14" Plow 2 point  
 Hitch  
 2-16" Plow 2 point  
 Hitch  
 3-16" Plow 2 point  
 Hitch

**DRIVING HARROWS**  
 Point Spring Harrow  
 Point Fast Hitch  
 Tractor Spring Harrow  
 Reg Spring Harrow

**SPREADERS**  
 Spreader  
 Idea Spreaders

## RAIN or SHINE Make High Quality Hay NICHOLSON HAY TEDDER



This Nicholson tedder by its unique double tine action is gently throwing the crop in air, combing out the lumps and opening

up the thick butt ends of the swath; leaving fluffy condition so that warm dry air can pass through it and reduce the moisture with maximum speed.

### NEW IMPROVED MODELS

UT1 Ground Drive — UT2 PTO Drive

New type double acting spring steel tine. Available for older models. Forward screw control for adjusting working depth of tines. You can cut, cure and bale high protein hay in two days. A simple machine designed for fast work and easy maintenance.

### LIMITED SUPPLY

Write for information & prices

## ELMER SPAYD

R. D. #1, LITITZ  
 Located 1 mi. E. of Brunnerville,  
 4 mi. W. of Lincoln

## HYBRID Poplar Trees FOR SALE

(Shreiner Strain)

Cuttings - 1 year old and 2 year old trees from 6-18 ft. in height.

### Miles W. Fry & Son

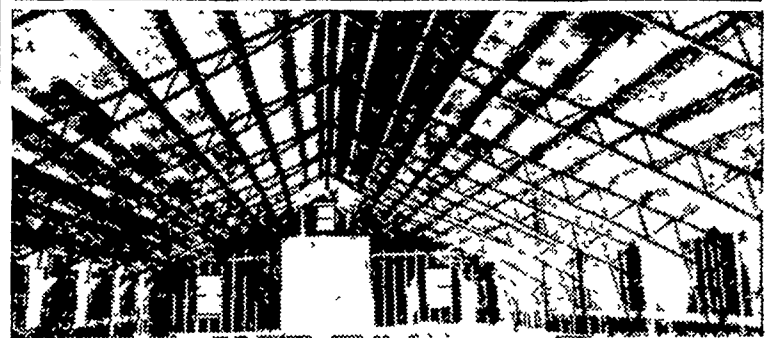
R. D. #3, EPHRATA  
 Ph. EL 4-6043

Try a Classified Ad.

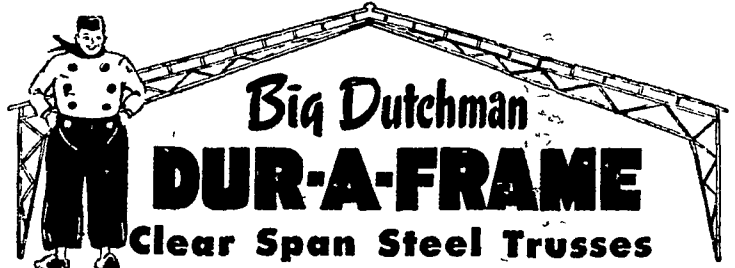
### WHEELHORSE and SIMPLICITY

### Garden Tractors

Snavely's Farm Service  
 NEW HOLLAND EL 4-2214



## BEFORE you build INVESTIGATE



- ✓ wall-to-wall post-free interior
- ✓ 34, 40, 50, 60, 70-ft. CLEAR spans
- ✓ easy, fast, 3-bolt assembly
- ✓ economical—designed for use with standard materials and sizes

### SIZES

Side Wall	Clear Span	Side Wall	Clear Span
6' x 34'	8' x 50'	8' x 34'	8' x 50'
6' x 40'	8' x 60'	14' x 34'	8' x 60'
8' x 40'	12' x 60'	16' x 34'	8' x 70'
12' x 40'	16' x 60'		
16' x 40'			

### UNLIMITED APPLICATIONS

- Warehousing • marinas • cement block storage
- loading barns • machine sheds • poultry buildings
- grain storage • airplane hangers • produce storage
- light & heavy manufacturing • used car lots • restaurants • bowling lanes • school bus barns • and dozens more!

## Big Dutchman DUR-A-FRAME Division

407 W. Washington • Zeeland, Michigan

CONTACT YOUR LOCAL DEALER TODAY!

## KUIPERS BROS., Inc.

NEW HOLLAND

Phone EL 4-5111

# MORE FOR YOUR MONEY!

Here's why. The Wayne Tail Curler feeding program gets pigs off to a fast, healthy start—provides the proper nutrition at every stage of the life cycle. Real feed efficiency gives you low cost pork production. Read what other Wayne feeders say: J. L. Manoe, Xenia, O.: "218 lb. pigs in 5 months, 4 days.

Feed cost, \$9.46 per cwt. gain." Mike Bothell, Iowa City, Iowa; "Feed cost, \$7.51 per cwt. pork, 2.41 feed conversion."

Get your hogs on the Tail Curler program. We have Wayne Calf and Pullet programs too!



# Wayne Tail curler program

H. M. STAUFFER & SON'S, Inc.

Witmer Ronks - Leola, Pa.

SUNSHINE FARM SUPPLY

Lititz, Pa.

ABERDEEN MILLS

R.D. 2, Elizabethtown, Pa.

LIME VALLEY MILLS

R.D. 1, Lititz, Pa.

ROHRER'S MILL

R. D. 1, Ronks, Pa.

C. ULRICH, JR.  
 Peach Bottom, Pa.

SVILLE SUPPLY CO.  
 Millersville, Pa.