

Oats For Horses May Be Cause Of Heaves

A physically handicapped horsewoman from Massachusetts has discovered what may be a cure for heaves - one of horsedom's worst maladies.

The disease, long considered to be chronic, progressive and often hopeless, is apparently tied in with food allergies. This is the conclusion arrived at from long studies and the experiences of hundreds of horsemen.

But strangely enough it was not a medically trained specialist who discovered the practical approach to the

problem. For several years, Mrs. Barbara Montgomery, a well known Massachusetts horsewoman, has experimented with various diets in an effort to find out what feed ingredients might cause allergies in afflicted horses.

One of the more successful rations compounded by Mrs. Montgomery, working in conjunction with nutrition experts from one of the national feed firms, was high in vitamins but without oats. Oats has long been accepted as one of the staples of the equine diet.

A nine-year-old thoroughbred in advanced stages of heaves began to show signs of improvement within 24 hours after her first meal of the new mixture. Within five weeks after this horse had been pronounced "hopeless" by several veterinarians, she was sound enough to be ridden in a hunt.

Instead of the usual diet of oats and hay, several horses under the care of Mrs. Montgomery received only the new mixture with water soaked beet pulp and molasses. Remarkable recoveries led to the conclusion that the cause of heaves is bound up with some substance in hay or oats. Medical specialists have

Now Available at ROHRER'S 7.5 Orthocide Dust

FOR SEED POTATO
TREATMENT

**P. L. ROHRER
& BRO., INC.**

SMOKETOWN, PA.
Ph. Lanc. EX 7-3539

Chemicals Topic Of New Leaflets

"It pays to use chemicals safely", is the theme of three new leaflets released this week by the United States Department of Agriculture.

The leaflets, pointed at three segments of the business of farming, stress the importance of reading all labels carefully and following those instructions to the letter.

Each of the three leaflets point out that exact amounts of any chemical should be used and only at recommended times. Failure to follow recommendations may result in agriculture produce illegal for interstate shipment because of excessive residue.

The leaflets, available from the Superintendent of Documents, U. S. Government Printing Office, Washington 25, D. C. at a nominal cost, are numbered as follows: Field Crops, USDA Leaflet No. 470; Livestock USDA Leaflet No. 472; Fruit and Vegetables, USDA Leaflet No. 471.

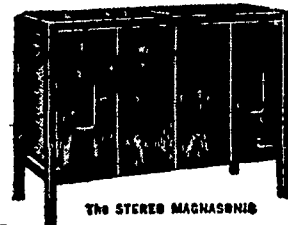
indicated that the information may be used in the study of people suffering from emphysema, a disease involving the stretching or rupture of the air sacks causing the lungs to lose their elasticity and making exhalation of air difficult. Emphysema in human beings is very similar in nature to heaves in horses.

SALE EXTENDED TO APRIL 9 BUY NOW and SAVE!

during our big once-a-year
factory-authorized

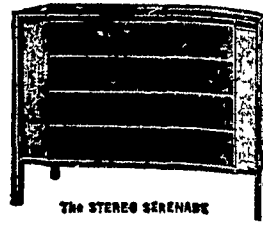


COMPLETE HI-FI STEREO SYSTEMS IN ONE BEAUTIFUL CONSOLE



See and hear this complete hi fi stereo system all in one beautiful furniture cabinet: powerful stereo amplifiers—four Magnavox high fidelity speakers—tone control—exclusive Magnavox precision 4 speed record changer with Stereo Diamond Pick-up that plays all recordings. Nothing else to buy!

SAVE \$40 NOW ONLY \$159.50
In mahogany



A demonstration of this superb Magnavox will amaze you! Powerful stereo amplifiers—six Magnavox high fidelity speakers, including two 12" bass—exclusive Magnavox precision 4 speed record changer with Stereophonic Diamond Pick-up that plays all recordings. Actually out performs other brands costing twice as much. Several finishes.

SAVE \$25 NOW ONLY \$199.50
In mahogany

Savings up to 30% on Discontinued Models
SAVE ON FLOOR MODELS AND DEMONSTRATORS

GLICK'S AUDIO SALES

2320 HOBSON ROAD SMOKETOWN, PA.
EX 3-7242
Open Tues. to Sat. 9 - 5; Friday 9 - 9; Closed Monday

MAKE NO MISTAKE

Conestoga Brand Fertilizers

Are Made in Penna. for Penna. Soils and Conditions

TOP DRESS — PLOW DOWN — SIDE DRESS
Bags - Pick-up Bulk - or Spread

ALFALFA SPRAYS — WEED KILLERS

LANCASTER BONE FERTILIZER CO.

QUARRYVILLE ST 6-2547 OXFORD 323

FLORIN Replacement Pullet Feeds



Offer You A...

Complete, Economical Program

From Day Old Chicks
to Mature Pullets

- ★ 1-6 Weeks --Florin Chick Starter
- ★ 6-12 Weeks--Florin Gro-All
- ★ 12-22 Weeks--Florin Gro-Mor Pellets

Allow This System Plus Excellent Service To Give You A Winning Combination In Raising Your Pullets This Year.

FOR MORE DETAILS CALL
MOUNT JOY OL 3-2411

Wolgemuth Bros., Inc.
FLORIN, PENNA.

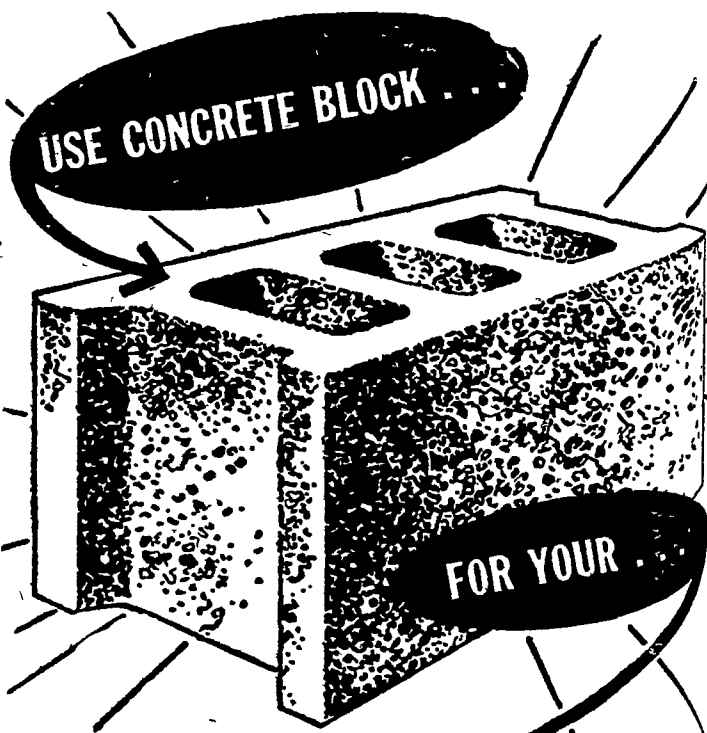
NEW HOLLAND Concrete Blocks

for

Safer
Durable
Construction

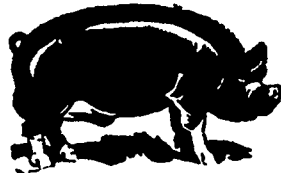
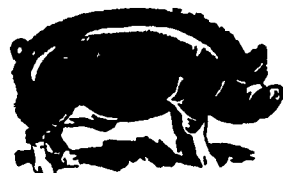
NEW HOLLAND
CONCRETE PRODUCTS

New Holland, Pa.
Phone: ELgin 4-2114



- HOME
- GARAGE
- RETAINING WALLS

1 to 3



For every dollar invested in limestone, experiment stations conclude, three dollars are returned in increased crops. Sometimes the ratio climbs to one to 15.

This explains why the Government pays about half the cost of applying limestone, if help is desired. The Government is convinced that farmers cannot afford to not use limestone.

Where else does one dollar spent bring at least three in return? It does pay to use good limestone!

MARTIN'S LIMESTONE

Ivan M. Martin, Inc., Blue Ball, Pa.

Ph. New Holland ELgin 4-2112
Terre Hill Hillcrest 5-3455
Gap Hickory 2-4148