

At Lancaster Yards Steer Quality Improves

James E. O'Hara,
In Charge, Market News Branch
Cattle: 4700 compared to 3858 last week. Supply includes 50 per cent slaughter steers, 40 per cent stockers and feeders. Trading was slow on bulls and stockers and feeders, moderately active on slaughter steers and cows. The quality was improved with a greater percentage of choice grade available.

Compared with last week's close, slaughter steers were steady to 50 higher with most advance on high-choice and prime grades. Cows 25 higher. Bulls barely steady. Stockers and feeders steady.

The bulk of the choice grade slaughter steers 950-1350 lbs. brought 27.50-30, with several loads and lots high-choice and prime 1152-1225 lbs. at 30.50-31.50, a load prime 1192 lbs. sold for 32. Good to low choice 24-27.50, few lots standard 22-23.75.

Good and choice heifers 785-1010 lbs sold for 23-26, cutter, utility and commercial cows brought 16-18.50, commercial cows were mostly 18-18.50, canners and low cutters 14-16. Good and choice 800-1100 lb. feeder steers were 25-25.29, medium

and good 22-26.50. Good and choice 550-800 lb. stock steers were 27.50-32, medium and good 23.50-28. Few lots good grade stock calves brought 29-30.

752 last week. Trading was moderately active. Vealers were steady with last week's close. Good and choice vealers 27-33, choice and prime 33-38, few prime selling at 39, standard and low good 19-26, utility 14-19.

Hogs: 2020 compared with 1996 last week. Trading was moderately active. Barrows and gilts were steady to 25 higher. Sows steady. U. S. 1-3 grade 190-230 lb. barrows and gilts 16.50-17, mostly 16.50-16.75, few lots no. 3's at 16.25. Hogs more uniform for wgt. and grade, including U. S. 1-2 grade, 190-220 lbs. 17-17.75, U. S. 1's the same wgt. brought 18. 230-250 lbs. sold for 16-16.50 U. S. 1-3, mostly 2-3 grade, 300-600 lb. sows 11-13.

Sheep: 175 compared with 165 last week. Trading was moderately active. All classes steady. Good and choice 80-105 lb. wooled slaughter lambs sold for 21-24, utility and low good 16.50-21. Good and choice 50-90 lb. spring lambs brought 27-28 with a lot weighing 38 lbs. included at the 28 figure.

When a person dies leaving property, but no valid will, he is said to die intestate, and the court can appoint an administrator to settle the estate.

Feeder Pig Sale

Monday, April 11

2 P. M.

CAROLINE SALES CO.
Denton, Md.

600 DISEASE-FREE PIGS, eligible for interstate shipment.
MD. SWINE PRODUCERS ASSN., INC.

Chicago Cattle Receipts Still On Upswing

CATTLE—Unusual distribution of receipts, Wednesday's run of better than 18,000 larger than on Monday and largest for a mid week market since January 1959. Week's supply slightly larger than last week, Largest in two months and 20 per cent above the corresponding period last year.

Nearly 75 per cent of Receipts slaughter steers, between 15 and 20 percent heifers and 5 percent cows.

About 8 per cent of the steer supply prime. Around 55 percent choice and 30 percent good grades, average weight of slaughter steers may be little changed from last weeks average of 1165 lbs.

Slaughter steers and heifers sold steady to higher on Monday. However, steers low prime and below and all heifers more than lost Monday's advance. Rank and file steers low prime and below closed steady to 50 lower than late last week and 50-1.00 under Monday. At the weekend average prime to high prime steers still steady to 50 higher for the period and at a new high since last May.

Stockers and feeders steady to 50 lower, Decline on feeding steers over 800 lbs.

Load prime 1207 pounds slaughter steers 33.25, four loads 1325 - 1448 lb. weights 33.00. Early bulk high choice and prime steers 29.50-32.50 late bulk 1050-1450 lb. weights 29.00-32.50.

Good and choice vealers 30.00-34.00, standard 23.00 - 29.00.

Few loads good and mixed good and choice 525-650 lb. stock steers 27.25-28.00, load medium and good 600 pound weights 25.50. Few loads of choice around 1050 lb. feeding steers 25.75-26.75, these showing considerable evidence of grain feeding.

Lancaster Farming Advertising Pays

New Holland Steers Barely Steady

Slaughter steers continued steady to slightly lower this week at New Holland. Cows sold steady and bulls were 1 lower, Vealers were 50 to 1 lower on 220 head.

With receipts of cattle at 1308 head, several lots of choice and prime 980-1125 lb. slaughter steers were 30.10 to 30.85 with one head 1,020 lbs. at 31.35.

Choice grade slaughter steers weighing 900-1350 lbs. few lots weighing 1,350 to 1,450 also included at 27.25-30. Good to low choice 27-27.50. Standard 19-24.

Good and low choice heifers 672 to 995 lbs., 22-26.10, Utility and standard 17-22.

Vealers, good and choice grade 27-34. Choice and prime 34.50-38 with a few prime at 40. Standard and

low good 22-26.50 18-22.

The March 30 day sale had receipts of 2000 cows, 20 bulls and 1000 ers. The market was sluggish and \$10 head lower.

Fresh cows, Holstein -400, Guernsey, \$225-275 others, \$225-275, Stock \$110-252.50, \$75-175.

The March 28 day sale had receipts of 2000 The mule market was steady on top grades. Draft horses were to strong.

Mules, pairs - \$300-400, single - \$150-300, Ponies - \$140-270, Percherons - \$200-300, geldings - \$140. Driving horses - 225, riding horses - 300. Killers - 10

Now is the ideal time to apply New Jersey Green Sand and Calphos to grain and hay fields. If interested in natural program of farming it will pay you to investigate and use these natural colloidal marine deposits.

Any quantity available Bag or Bulk Ton or carload lots.

Also available our complete soil builder for lawns, garden and all row crops. Try and compare.

BROOKLAWN FARM
118 Kreider Avenue
Ph. LO 9-1580

H. MERVIN McMICHAEL
Lanc., R. 6 Ph. TR 2-4377
or your local dealer

FOR SALE

a tireless "work horse" for tough garden jobs



YUBA CHORE MASTER HEAVY DUTY TILLER

Do a whole week end's work in a few hours! A single pass does the work of plow, disc, harrow. Prepares ground for planting, furrows for seeding, cultivates at any stage of growth. Operates with single control center and recoil starter. Works ground 11", 22" or 33" wide... as deep as 10". Goes between narrow rows

1 POWER TOOL DOES IT ALL!
• breaks ground • hills
• cultivates • weeds
• furrows

EASY PAY PLAN
SPECIAL OFFER
FREE \$12.95 Furrower-Hiller attach. with Heavy Duty Tiller.

Stop in for Demonstration

L. H. BRUBAKER

350 Strasburg Pike Lanc.
Lititz, R. D. 3

Ph. Lanc. EX 7-5179

Strasburg OV 7-6002




Lititz MA 6-7766

IT PREVENTS... ERADICATES

TOBACCO BLUE MOLD and WILDFIRE

Phytomycin*

Mathieson's new LIQUID antibiotic

-  LONGER LASTING
-  EASY AND ECONOMICAL TO USE
-  SUPERIOR TO WETTABLE POWDERS BECAUSE:

1. Goes into 100% solution

2. No caking—forms better, more uniform mixture

 SAFE TO PLANTS



PHYTOMYCIN is manufactured by E. R. Squibb & Sons, A Division of Otis Mathieson Chemical Corporation

SEE YOUR DEALER OR

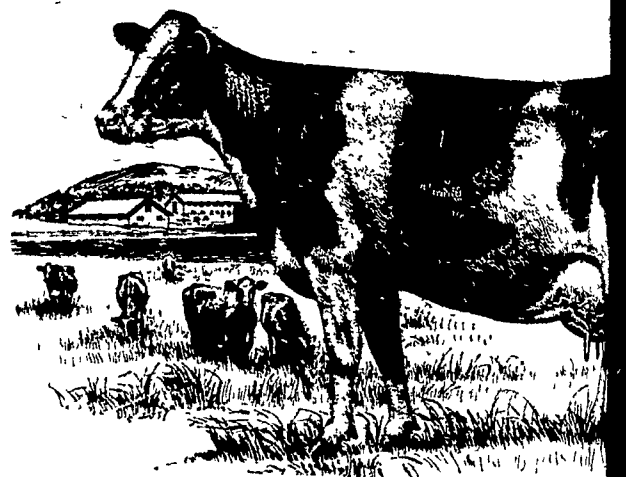
J. C. Ehrlich Chemical Co., Inc.

736 EAST CHESTNUT STREET

LANCASTER, PA.

PHONE EX 7-3721

Supplement GRASS with GRA



... For More Milk All Summer

Every dairyman likes the boost in milk production cows get from lush pasture. He knows it means dollars in the milk check . . . and at lower feed cost.

But dairymen know, too, that pasture can't be relied on for its counter laxative effect. This supplementary dry feed . . . including grain . . . helps the cows hold body weight, keeps them in better condition to produce up to inherited capacity.

And pasture quality changes, too, as the season progresses. Grasses become dry and less palatable, less as the weather gets hotter. Supplementary feed becomes even more important then.

We'll be glad to recommend a specific program to your herd, your pastures. The Beacon Pasture program has helped thousands of dairymen produce more milk . . . profitably. Chances are it can help yours, too.

The Beacon Milling Company

A Division of Spencer Kellogg & Sons, Inc.

PHILADELPHIA & CARLISLE STS., YORK, PA.

Telephone: York 8-2341

BEACON