

Sale Register

April 6 — Wed. 1:00 P.M. Pub. Sale of 25 head guernseys and milking equipment by Chalmers P Means at R. D. 1, Shippensburg, 1/2 mile from North Queen Street on Britton Rd. Wenger, Auct

April 5—1.00 P.M. Friday 8th annual Northern Va Feeder Calf & Yearling Sale by Northern Va Livestock Producer's Assn., Inc Winchester, Va.

April 5 — Tuesday 11 00 A. M. Pub sale of 121 acre farm, holstein cattle, and farm machinery by Jonas S Zook & Son, between Springville and Welsh Mountain Mission. Diller and Kreider, Aucts

April 5, Monday — Sale of grassers, feeders, and calves by the Virginia Livestock Market, Winchester, Virginia at 1:30 p.m.

April 8, Friday — Spring Stock Cattle Sale 700 head of steers and heifers, by Bue Ridge Livestock Sales, Inc., Charlestown, W. Va.

April 9— Saturday, 11:30 A. M. Gockley's 41st annual spring sale, by Elmer E. and Jacob H Gockley at Fritztown, Berks County, Pa.

April 15, Friday — Special sale of stockers and feeders by the Virginia Livestock Market, Winchester, Va.

April 13 — Wed 10 A. M. Spring Sale of tractor and horse drawn implements, machinery & equipment, hay & straw by Wm. Z. & Paul Z. Martin, Blue Ball, Pa.

New Construction Material Stocked By County Firm

Kuipers Brothers, New Holland have been named Eastern Distributors for a new type of construction material by the manufacturers, The Big Dutchman Co.

The Construction, called Dur-A-Frame can be installed to make a building with clear span of up to 70 feet. Only three bolts are required to hold the steel trusses in place and form a post-free interior.

TORTURE-TESTED!

New McCulloch ONE/40

• Most Chain Saw For The Money
• Torture-Tested for Dependability
as low as

\$154.95



complete with 12" bar and metal chain



High Trade-Ins

LANDIS BROS.

MANHEIM PIKE
LANCASTER
EX 3-3906

GOCKLEY'S

41st Annual Spring Sale Saturday, April 9, 1960

AT FRITZTOWN, BERKS COUNTY, PA.

TRACTORS — FARM MACHINERY
59 Head Nice Holstein Heifers
16 BULLS

50 PIGS Including Sows, Gilts, Shoats and 4 Boars
75 TON OF CORN and 60 TON OF MIXED HAY

WE SELL ON COMMISSION

Sale begins at 11.30 a.m. Terms by

ELMER E. and JACOB H. GOCKLEY

For the Most Markets Read Lancaster Farming



- Starts Chicks Right
- Produces Strong, Vigorous Birds
- Houses Economical Pullets

MEDICATED
FOR YOUR
ADDED
PROTECTION

Get your chicks off to a fast start and sturdy growth that means more profits later by feeding RED COMB CHICK STARTER. Highly palatable, nutritionally correct and uniform in quality, RED COMB CHICK STARTER is your best buy for Quality Results at Low Cost.

Come In and See Us
Next Time You're In Town

Joseph M. Good & Sons

LEOLA — QUARRYVILLE

FOR GREATER YIELD

Pasture, Small Grain
and Corn

MATHIESON



ANHYDROUS AMMONIA

82% NITROGEN

Increase your yields and your profits.
Easily applied. Saves Time. Saves Labor.

DEALERS

HIESTAND INC.

MARIETTA R.D. 1 Ph. HA 6-9301

CLARENCE RUTT

NEW HOLLAND Ph. EL 4-8797

L. H. BRUBAKER

350 Strasburg Pike Ph. Lanc. EX7-5179

Lititz R. D. 3 Strasburg OV 7-6002

MA 6-7766



CLEAN SWEEP

Public Sale

— OF —

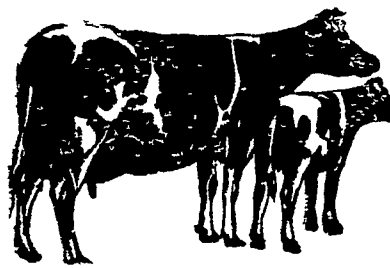
121-Acre Farm

HOLSTEIN CATTLE and
FARM MACHINERY

Tues., April 5, 1960

AT 11 00 A M

The undersigned will offer at Public Sale on the premises located between Springville and Welsh Mountain Mission, 2 miles northwest of White Horse, 1/2 mile east of Route 897 in Salisbury Township, Lancaster County, Pa., the following, to wit:



**50 HEAD
OF HOLSTEIN
COWS
& HEIFERS**

(Some Registered)

Certified blood-tested and vaccinated, health charts furnished. Several fresh recently and 25 head due throughout the summer and fall. Herd testing on owner-sampler plan. Following are record cows selling:

Maggie (Grade) 19,053 - 590 - 362 days Whitey (Reg.) 16,881 - 657 - 292 days; Lady (Reg.) 15,246 - 507 - 317 days; Margy (Grade) 14,065 - 560 - 365 days; Theima (Reg.) 15,982 - 532 - 357 days.

Selling 33 COWS, 12 BRED HEIFERS, 5 YEARLING HEIFERS, sired by S.P.A.B.C and ABS Bulls as follows: Hillmac Sovereign, Knollwood Double Chieftain, Penstate Lucifer Star, Sir Roeland Daisy Dandy and others.

Six Heavy Work Horses

121-Acre Fertile Farm

100 Acres tillable (well drained); 21 Acres in good permanent pasture with strong stream. Buildings consist of—

STONE BANK BARN

WITH NEW DAIRY BARN ATTACHED, stanchions for 38 head, equipped with barn cleaner, heifer stables, 3 box stalls, horse stables; One 12'x50' Concrete Silo; One 10'x60' Concrete Silo; New Milk House; Corn Barn and Implement Shed; Chicken House, Brooder House

8 Room

Stone House

IN GOOD REPAIR



6-Room Concrete Block House

NEW 7 YEARS AGO

Water by gravity to both houses and barn All buildings in good state of repair 45 Acres in a fallow and fertilizer this spring. Farm located nicely along hard road with Supplee Milk Market

This place can be inspected any time from now until sale. Terms 10% down on sale day, balance to be paid on May 10, 1960.

FULL LINE OF FARM MACHINERY, AS FOLLOWS:

Jonh Deere 'M' Tractor

on rubber, with new Henderson manure loader.

Clay Hay Dryer, Fairbanks Diesel Engine, CONDE MILKER, 18-CAN STAUFFER MILK COOLER.

A. C. Forage Harvester (2 years old) on rubber, grass, corn pick up head, P.T.O. driven; A. C. Bower, on rubber, with 60' pipe, 2 Grove Wagons with false fronts, A. C. Blower, A. C. "WC" Mounted Engine for blower; A. C. "B" Engine; D-14 A. C. Engine, 2 years old, mounted on fore truck, standard to P.T.O.; N. H. Unloading Jack with 2-horse-power Gas Engine; A. C. Combine, P.T.O.; Smoker Elevator; J. D. Horse Manure Spreader, J. D. 2 bottom "44" Plow; Imperial 28 Disc; 2-way McD Plow; two Walking Plows; 4-barrel Hanson Sprayer, P.T.O.; 3 section David Bradley Spring Harrow; Ontario Drill, J. D. Corn Planter; M. M. Corn Picker; Cannon Corn Sheller; David Bradley Saw, McD. 7' Grass Mower; 7' Swather, 50-ft Flexible Shaft.

Jamesway Silage Cart; Jamesway Feed Cart; 30 Milk Cans; Buckets and Strainers.

Seven Sets Work Harness; Double Trees, Single Trees and many items not mentioned.

This sale is necessary due to poor health of the owner. Real Estate will be offered at 1:30 p.m.

Carl Diller and
J. Everett Kreider,
Auctioneers

Jonas S. Zook & Son

NEW HOLLAND R. D. 2, PA.

Lunch Served by Mechanics Grove Church of the Brethren