

## Native Trout Outlive Their Hatchery Kin

The majority of fish caught by anglers come from natural reproduction, even from lakes and streams in which hatchery fish have been stocked, reports Edwin L. Cooper, fisheries biologist for the Agricultural Experiment Station, the Pennsylvania State University.

Cooper says this statement is verified in a review of 164 world-wide studies of trout management, published under the title "Trout Stocking as an Aid to Fish Management," Bulletin 663 of the Agricultural Experiment Sta-

tion. The bulletin is free on request from the Agricultural Mailing Room, University Park, Pa.

Essential differences between native trout populations and domesticated, hatchery trout should be recognized, Cooper feels. It is too much to expect hatchery trout to survive in a natural environment at the same rate as wild fish, in his opinion.

Based on the large number of trials by different investigators, he reports that returns from hatchery trout are likely to occur when trout of any size are stocked in lakes, ponds, or streams where there is little or no competition from fish already present, or when catchable sized trout are stocked where

heavy fishing is exerted promptly. Under other circumstances, recovery of stocked fish is likely to be low, the studies show.

Trout lay many eggs, he points out and 400 young are a common, average brood of fry. Of these, he declares, only two need to live two years, the length of time required for maturity, to maintain the original pair of stock fish. This amounts to only one-half of one per cent survival.

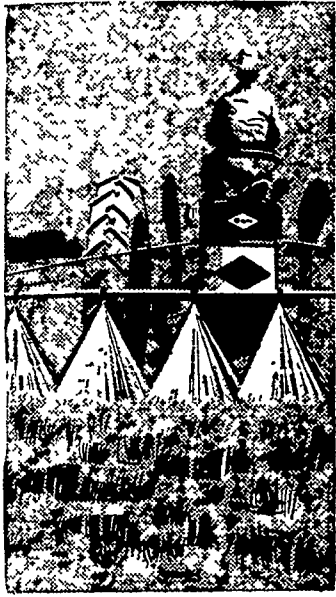
Opinions as to the type of trout management wanted by anglers range, he says, from "no stocking; fish for fun only" to "completely artificial propagation, put and take fishing." Accurate appraisals of the desires of the fishermen seldom are made,

### NEW BARN EQUIPMENT CARE FOR LAMBS

As a milk conveyor Ivan Parkin, Penn State extension dairy specialist, likes the around-the-barn pipeline.

Other types of milk conveyors include the single line system and the dumping or pumping station.

Bad luck during the lambing season too often is the result of poor management and lack of preparation, reminds Frank Kreuzberger, Penn State livestock specialist. The shepherd must care for his flock.

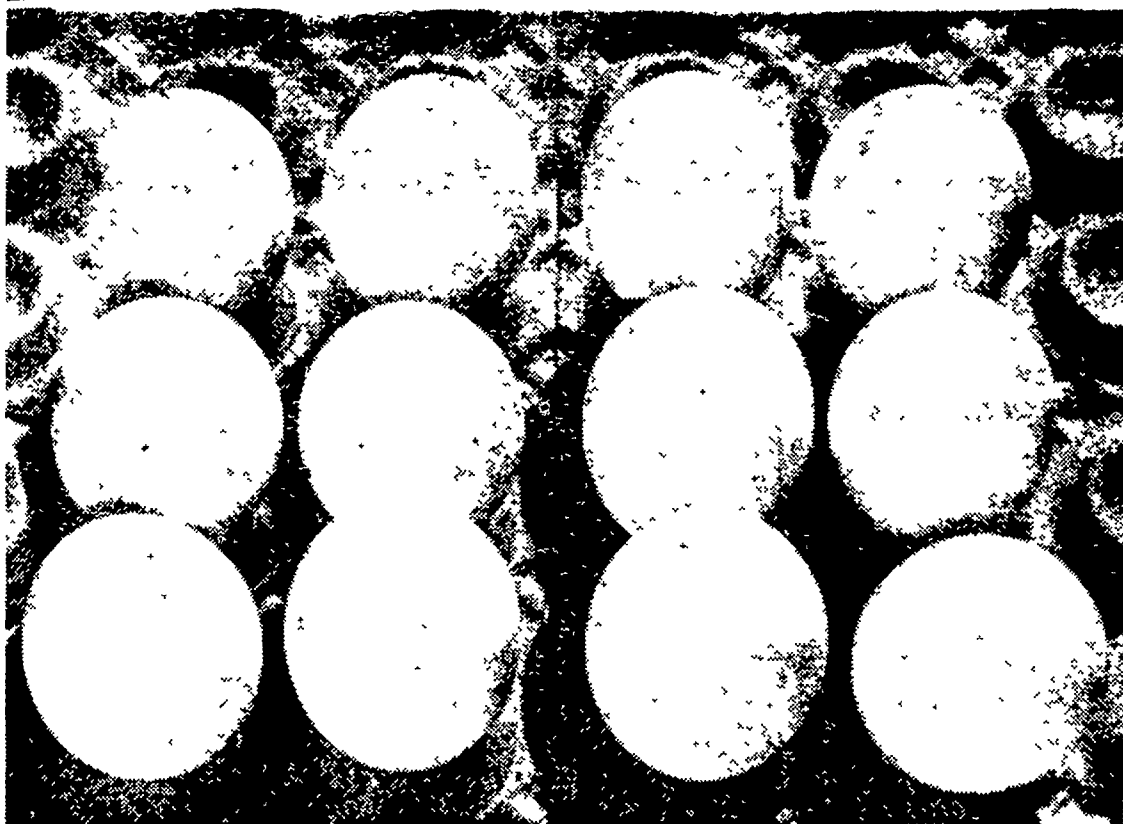


### Esteron 99 — kills weeds that other weed killers find too hard to handle . . . yet costs as little as 25¢ an acre

It's not what a 2,4-D costs—but what it controls that counts. More farmers buy and rely on Esteron 99\*—for they find it's too costly to experiment with less-known brands. Tests show it's extra effective and easy to apply . . . doesn't foam . . . mixes easily in hard water, and sprays evenly. A single gallon covers many acres—an extra bushel an acre more than pays the cost. Order your supply of America's leading brand of weed killer today.

\*Trademark of The Dow Chemical Company

**L. H. JACKSON**  
KIRKWOOD, PA.



## thrift by the dozen

### For Poultrymen Who "NEED A LIFT" Eastern States Announces— Two New Cost-Cutting Poultry Feeds

**THRIFTMAKER** is a new complete layer feed which truly can deliver to your egg room "Thrift by the Dozen." It offers you low, low cost per bag . . . and 11 more thrift-making advantages.

**FOUR-MIX** is a 44% protein supplement. You need only four bags along with 1600 pounds of corn to make a ton of layer ration rich in egg making potential. With FOUR-MIX you get good egg production at rock bottom feed cost.

Next step is to see your local Eastern States man . . . get lined up today for your share of "THRIFT BY THE DOZEN." You can get it in THRIFTMAKER or in FOUR-MIX.



## Eastern States FARMERS' EXCHANGE

Eastern States Service Centers

LANCASTER—Manheim Pike and Dillerville Road, Tel. EXpress 4-3755.

QUARRYVILLE—Church Street, Tel. STerling 6-2417

Or

Call your Eastern States Local Representative

### Fully Mounted . . . yet pulled from a single hitch point



Allis-Chalmers No. 63 3-bottom plow —

- Fully mounted for turning, transport and corner-plowing convenience.
- Pulls from single hitchpoint with low, natural line of draft . . . eliminates side draft even when plowing on the contour.
- Works with TRACTION BOOSTER system for shifting of weight to rear tractor wheels as needed.

Put a new Allis-Chalmers No. 63 plow in your field behind a D-14, WD or WD-45 Tractor. Find out how easy good plowing can be. Also available is the No. 62 2-bottom plow with same features. See us for the correct moldboard plow for your soil.

TRACTION BOOSTER is an Allis-Chalmers trademark.

**ALLIS-CHALMERS**  
SALES AND SERVICE

**Snavelys Farm Service**  
New Holland, Pa.

**L. H. Brubaker**  
Lancaster, Pa.

**Nissley Farm Service**  
Washington Boro, Pa.

**Mann & Grumelli Farm Serv.**  
Quarryville, Pa.

**R. S. Weaver**  
Stevens, Pa.

**L. H. Brubaker**  
Lititz, Pa.

**N. G. Myers & Son**  
Rheems, Pa.