

4-H Electric

(From page 1)

demonstration contest at the district roundup and elimination contest prior to the contest during 4-H club

ected on the basis of a presentation of a short individual demonstration were Ward Glass, 315 Pitney and Richard Leaman, Creek Hill Road These will form the demonstration team and will be led by the leaders of the prior to further competi-

edges for the demonstration contest were Mrs Karen Home Economist for L. Richard Lefever, of R1, vice president of the county 4-H leadership council; and Jack Owen, of Lancaster Farming.

Building a Farm House?

New Plans Available

A new house plan featuring a research-developed kitchen along with a spacious and flexible room arrangement has been released by the U. S Department of Agriculture

Designed as a farm home by architects and housing specialists of the Department's Agricultural Research Service, the house is of masonry and frame construction with a low-pitched roof, a carport, and a basement under the main living area. Although basically a farmhouse plan, it is suitable for use in many suburban and urban locations.

At the center of the L-shaped floor plan is the Beltsville Energy-Saving Kitchen Design No 2, which incorporates the results of USDA research on work space, storage, and kitchen arrangements that require the least amount of effort in usual kitchen activities.

Adjoining the kitchen is a family room that has large windows and provides a generous amount of space for dining, family activities, a farm business center, and laundry equipment. It can be reached from the front hall without going through the kitchen, which can be closed off by a folding door. If the washer and dryer are preferred in the basement, the space allowed in the family room can be used for a sewing center or for storage

Directly off the family room is a covered patio in view of the kitchen. It provides a convenient place for outdoor dining as well as an all-weather play area for children.

The house includes two good-sized bedrooms, both large enough for twin beds. A third bedroom could be made from a den, which opens into the living room. The den might also be used as a second dining area.

The house includes one and a half bathrooms with the possibility of adding another bath in the basement. The half bath is located between the carport and the family room. A work clothes closet is nearby so that people coming in from outside can change clothes and clean up before entering the main living area

The plan provides for ample storage space, much of it based on the findings of USDA and regional research on rooms has a 8-foot long closet with ceiling-high folding doors offering easy access to the entire storage area. The den closet is considerably smaller than the others, so if the den is used as a third bedroom some adjustment in clothing storage should be

made. In addition to the work-clothes closet near the carport entrance, there is a coat closet opposite the front entrance to the house. Closets for bed linen and cleaning equipment are planned in the hallway, and there is a separate cabinet for towels in the bathroom and a second cleaning closet in the kitchen. The plan also provides a 10-foot-long storage closet next to the carport.

A separate living room, spacious and convenient to the kitchen and family room includes a fireplace wall with bookshelves and wood storage cabinet that can be filled from outdoors. Directly opposite the den are sliding glass doors leading to an outside terrace. Another door, leading to the covered patio, could be added in place of the wood storage cabinet. This would complete the circuit from living room to patio to family room, offering a convenient arrangement for entertaining large groups

The family who entertains informally will find space for a recreation room in the basement where there is an outside entrance in addition to a stairway from the main floor close to both the front entrance and the kitchen. The designers have also allowed basement space for a storeroom, utility room, bathroom, and laundry room. A laundry chute could be added in the bottom of the towel cabinet in the first-floor bath-

room. The basement also has good space for a freezer and canned food storage if the family does much food preserving.

Economy features of the design include use of roof trusses, placement of basement utility space so that the flue for the heater can be in the same chimney as the fireplace flues, and a central location for the heater for economical heat distribution.

Dates Set For Livestock Show

Harrisburg, Pa — Dates for the fourth Pennsylvania Livestock Exposition have been announced by the Pennsylvania Farm Show Commission.

Dates for the 1960 show will be November 7 through 11. Site of the beef cattle, hog and sheep show will be the famed Pennsylvania Farm Show Buildings in Harrisburg

Total premium money offered for the show has not been announced. Last year exhibitors were offered \$80,000 in prize money and trophies

Show officials have indicated that again this year greatest emphasis of the show will be on the ability of animals to produce the type of meat wanted by the housewife. Carcass shows have been continuously expanded at the PLE and are expected to be filled again this year

Prospective livestock and commercial exhibitors are asked to direct inquiries to Pennsylvania Livestock Exposition, Farm Show Building, Harrisburg, Pa.

The cost of a college education has doubled in the last fifteen years. By 1970 experts estimate a college degree may cost as much as \$20,000

Savings

ROLD B. ZOOK

220 Lampeter Road LANCASTER, PA. Phone EX 4-5412

CLEAN DRY OR GREEN PINE - MIXED

or Bulk — Deliveries 2 ton and trailer load prices

WHY YOU SHOULD SWITCH TO MALATHION FOR ALFALFA PESTS

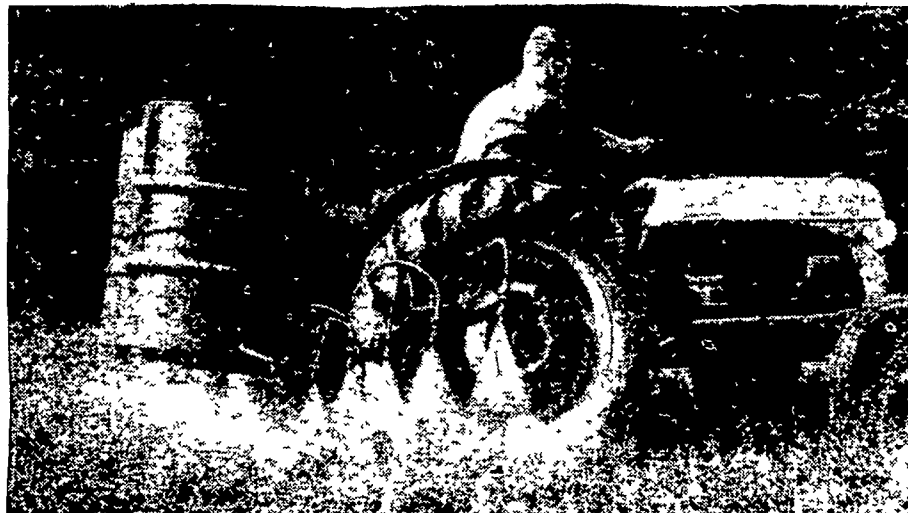
Malathion—a phosphate insecticide—takes dead aim on alfalfa weevil and aphids without creating residue problems

Experts agree that an average weevil infestation will cause a loss of \$15 to \$30 per acre. Aphids also cause considerable economic loss.

Fortunately, both these forage pests are controllable. This year, however, because of recent changes in the amount of residues permitted on harvested crops, some of the chlorinated insecticides can no longer be used. That's why Experiment Stations are recommending malathion, a phosphate insecticide, for sure control of both these pests.

Why malathion?

Malathion is unique among the phosphate insecticides. It has been the nation's number 1 aphicide for years. It is also effective against alfalfa weevil. In addition, unlike some other phosphates and chlorinated insecticides, malathion's residues disappear rapidly. That's why you can spray alfalfa up to 7 days from cutting or grazing without



To control alfalfa weevil, spray malathion when tops begin to show some damage. This timing kills weevil larvae, should give fast thorough clean-up that will last to first cutting.

exceeding residue limits established by law.

How to use malathion

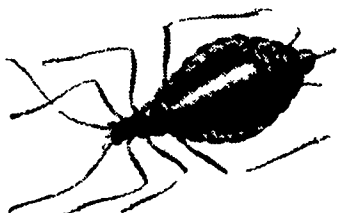
Malathion can be applied as a spray or dust with ground equipment or by plane. To assure coverage, sprays are recommended. The recommended dosage is 1½ pints of a 50% or 57% emulsifiable liquid per 100 gallons of water or 30 lbs. of a 4% or 5% dust per acre. For best results,

watch alfalfa closely. When most of the tops show some damage, apply malathion immediately. In many cases, an additional application right after first cutting has been extremely beneficial in getting second growth off to a fast, clean start. In some areas, local recommendations vary slightly from those given above. Check your local recommendation for the dosage and timing that works best in your area.

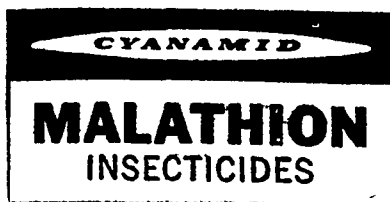
Send for free Malathion Handbook, PE 5039, American Cyanamid Company, Agricultural Division, New York 20, N. Y.



Alfalfa weevil (adult)—Larvae (which do the damage) are dark green worms with white stripe down back. Damage is most apparent on tips of alfalfa, although leaves and buds are also attacked. If field has grayish-white appearance, chances are weevils are present.



Aphid—Pea aphid is species that attacks alfalfa. When infestation is heavy, plants wilt and die, field looks white from cast-off skins.



CYANAMID SERVES THE MAN WHO MAKES A BUSINESS OF AGRICULTURE



QUEEN EGGS are not readily broken in grading, trucking and store handling.

AA Grade

QUALITY starts in our laboratory, long before hatching eggs are laid.

Mount Hope QUEENS lay eggs with strong shells right through the year—saving you money . . . No discounts for low quality and breakage.

INTERIOR QUALITY is higher than most Leghorns (by official Random Tests) making them "The Egg of the Future" because they meet the NEW U. S. Grade AA Label standards.

Yes, QUALITY starts before the egg is laid. It must be bred in. This is Mount Hope's job: You get the results in QUEEN Chicks. Contact your Mount Hope hatchery

Johnson's Hatchery
EPHRATA, PA.
PHONE RE 3-2980