

CLASSIFIED ADS

Farm Equipment

Reduced Prices on 1959 Model Case Tractors. 811 B, 4-5 plow 511 B, 4 plow 400 B, 3 plow 211 B, 2 plow

RED TRACTORS AND EQUIPMENT

Tractors - Models B; WD D-17 Ball H & C with cults., 77 with cultivator, loaders for AC, WC, John Deere A & B, 66, 76, & 77 Balers

WD 45 & Model B tractor, Burch disc harrows, Power wagons & generators, manure loaders

40' used wood silo condition. John S. Stolitz R4, Lancaster, Box 742

New Vicon Acrobat delivery rake Delivered 339 Hiestand, Inc. R1, Hazel Ph Hazel 6-9301.

Blower Feed Mixer, 200 lb capacity, never used. Big discount. Reist Co., Mt. Joy, Phone 3-3821

Hay Conditioning - mow & condition in operation 3 acres and Hiestand, Inc. R=1, Hazel HAzel 6-9301

new low price on motor and welder. \$100 Hiestand, Inc. Marietta Hazel 69301

milk coolers. Clark Erie RD 1, Kinzers, Pa. course SO 8-8501.

time to have dairy barn or chicken coop conditioned by O-Matic Control ventilation without drafts. All installation guaranteed. Hiestand, Inc. Marietta R1 Ph Hazel 6-9301

Household Goods

Washers and adding machines new and used; New Shavers - \$15.95 Call or write for demonstrations. Nolt's Hardware Pa Phone Terre HI 5 2526

space oil heaters and Siegler oil and gas heaters. AM-FM portable radios. Brubaker, 350 Strasburg Pike, Lancaster Phone 3-7607, Strasburg OV 7-Lititz MA 6-7766

latest in Blackstone Washers see HERR'S IMPLEMENT STORE Willow EX 3-8311

Ranges - Water Heaters - Washers & Dryers - Benches, Bottled Gas & Ice Ben Sherk, Lancaster Pa EX 7-2486

Miscellaneous

Special seeds. Special Clover and alfalfa, timothy etc Also soy beans Ross Mohr & Sons, Quarry, Sterling 6-3372

Real Estate

95 acre farm, house, extra large barn and other buildings Near immediate possession. Call LeVan, R1 Lancaster, Pa.

Help Wanted

operate pullet farm Must have good references include in letter Write Box 7, Lancaster Farming, P O 524, Lancaster, Pa.

Public Sales

PUBLIC SALE Saturday, March 5, 1960 1 mi. North of Quarryville at Hawkesville, along Camargo Road, Eden Twp., Lanc. Co., Pa.

13 Ayrshire Cows 6 Ayrshire Heifers Registered T.B. & Blood Tested.

On the individual plan It has been accredited since 1937. All vaccinated.

Farm Implements I H Model H tractor, I H Model A tractor, cultivators for both tractors.

500 bu ear corn; milk equipment - Surge milker. Some poultry equipment and household goods.

Sale at 11 00 a.m. by JOHN J EBERLY Kersey Bradley, Auct Kirk & Eshbach, Clerks Lunch by New Providence Reformed Church.

Mail Box Market

FREE, Subscribers to Lancaster Farming will receive one advertisement each month in our Mail Box Market. Subscribers using the Mail Box Market will be governed by the following rules: Limit your advertisement to five lines which means not over 25 words; All advertisements must be in our hands by Monday 6 p.m. or same will be held over for next week's paper; No business advertisements accepted

HELP WANTED Woman for full or part time house-keeping and babysitting. Phone Millersville TR 2-7564 Dr. Virginia Mears.

FOR SALE King-Wise Gram and Bale elevator 28 ft long Used one year Stauffer tobacco planter, two row Very good condition Cardinal grain auger, 16 ft. long Phone EMPire 7-4329

FOR SALE Henderson Manure loader for Farmall C Phone Lititz MADison 6-6164

FOR SALE Ear Corn and shell corn 55 gallon oil drums L'oyd Kautz, RD 3, Elizabethtown Ph EMPire 7-2294.

FOR SALE Yorkshire, Spotted Poland China pigs, 7 weeks old, also a few shoats. John Z Fisher, R2, New Holland

FOR SALE Refrigeration unit with motor, unit overhauled. Also double tobacco or tomato hoers, to mount on tractor Phone Ephrata REpublic 3-0180

FOR SALE Mixed hay - \$22 a ton J D PTO coin binder Papec ensilage cutter Horn stalk buster Broke Coon hound Ph Lanc EX 3-1788

FOR SALE AC pull type side delivery rake Good condition Ph Lancaster EX-press 4-0634

WANTED: Live bees in hive state your price per hive Apply to John M Martin, R1, Denver, at Fivepointville

Anyone interested in providing a good home for 4 cats and 3 kittens phone Lancaster EXpress 3-6494 Lewis L. Mortensen

Poultry & Supplies

5000 pullets - 16 weeks old Hiestand, Inc. R 1, Marietta Phone HAzel 6-9301

Auctions

Big Sale Thurs, Mar 3 at 10 30 a.m. - Hurlburt Farm Rte 36 between Hornell and Dansville, 25 from Whitesville 61 sharp Holsteins, young, nice udders interstate tested 4 horses (Farm Team and 2 saddle Mares) - An outstanding line of equipment - 4 I-H Tractors-Chopper-Baler-Combine, 3 trucks Produce - many small tools - Owned by Mr and Mrs C Dwight Hurlburt and sold by Rumsey Sales. 8-1c Try a Classified.

Public Sales

FARM SOLD PUBLIC SALE Power farm machinery, Prowender, House hold goods, and personal property.

Saturday March 12, 1960 On premises 1 1/2 miles northwest of Oxford, Pa. on Pine St. Road.

Sale at 11 00 a.m HENRY B. ANDERSON EMILY F. ANDERSON Owners Artlys & Seltzer, Aucts

PUBLIC SALE FARM EQUIPMENT POULTRY AND SATURDAY, MAR 5, 1960

Will be offered at public sale on the premises located 2 miles southwest of Willow Street, from 72, along the road leading from Baumgardner's Station to Byerland Mennonite Church, in Pequea Twp, Lancaster County, Pa 500 Babcock Bessie Leghorn pullets, starting to lay 400 Shavers Star-Cross Leghorn pullets, laying four months, FARM EQUIPMENT Model "860" Ford tractor with less than 900 hours, live power take off, Cultivators, Ford 2-bottom 14-inch plow; Ford 6-ft. mower, two 12A New Idea manure spreaders, Littlestown 8-ft. rotary cutter & many more items

Poultry Equipment. 12 range shelters, 50 8 ft flock feeders, 12 5-ft flock feeders, twelve 15-hole metal nests, 25 ten-hole nests, Keenco egg grader, like new, Keenco egg washer, like new, and many other items Sale to begin at 12 30 p.m DONALD L RUTT Abe Diffenbach, Auct.

PUBLIC SALE LIVESTOCK AND FARM MACHINERY THURS MAR 10, 1960

Will be offered at Public Sale on the premises at No 1925 Horseshoe Road, Lancaster on Route 772 between the Old Philadelphia Pike and the Witmer Road, in East Lampeter Twp, Lancaster County, Pa, the following Personal Property, to wit:

10 Head of FAT STEERS FARM MACHINERY THREE TRACTORS

One an Allis-Chalmers WD45 Tractor with 3-bottom Mounted Plow, One a Farmall C Tractor with cultivator, and the other a Farmall Super A Tractor with plow and cultivator, Manure loader & grading blade

28 Disc Harrow, Cultipacker E-Z Flow Fertilizer Drill, Four-can Electric Milk Cooler, Full line of farm implements

Sale to begin at 12 30 o'clock P M, on Thursday, March 10, 1960, when terms will be made known by LANDIS B BUCKWALTER Frank L Steller, Auct D Kreider and D Steller, Clerks (Not responsible for accidents on day of sale)

COMPLETE DISPERSAL OF PUREBRED & GRADE GUERNSEY DAIRY CATTLE AND FARM EQUIPMENT WED, MARCH 9, 1960

Starting at 10 00 A M Will be offered at public sale on the premises located 1 1/2 miles southwest of Route 72, from the Manheim Auto Auction, first crossroads turning left due west along the Railroad from Root's Market & Auction in Penn Township Lancaster County, Pa

50 Head of Purebred and grade Guernsey DAIRY CATTLE, 28 cows in the milking herd 8 bred Heifers - 14 Heifers from 4 months to 1 year old About half of these cattle are registered All are calfhood vaccinated, certified and T.B accredited Tested within 30 days of sale and eligible for shipment anywhere

900 Carey Steam Leghorns -laving good Farm Machinery including 3 tractors. Oliver 'Super 55' tractor with live power take-off and power steering, used less than 600 hours. John Deere "60" tractor with live power shaft power steering. Hour meter and fast 801 hitch, Oliver 60 tractor with cultivator and tobacco hoers Dairyng equipment - Mionnner 200 gallon bulk milk tank, complete with 1 hp Lehigh Compressor, DeLaval 3-unit milker with 4-unit pump and piping for 39 cows

MOOREFIELD FARMS, M G Moore, owner Abe Diffenbach, Auct

New Holland Sales Stables

Horse Sale - Every Monday at 11 A. M.

Dairy Cattle and Hogs - Every Wednesday at 12:30

Beef Cattle and Calves - Every Thursday at 12:30

Every Thursday we will try and have from 150 to 200 Stockers and feeder cattle for sale. These cattle will be sold immediately after the bulls (About 1:00 P. M.)

JOHN H. GINGRICH, Mgr.

Ph. New Holland EL 4-2194 New Holland, Pa.

PUBLIC AUCTION

EVERY TUESDAY

Starting Promptly at 2 p.m.

Starting with bulls, steers, heifers, cows, feeder pigs, calves and hogs.

We get top \$\$ for your Livestock

Give us a call - HI 2-4181

Vintage Sales Stables, Inc.

VINTAGE, PA.

Frank Dussinger, Manager

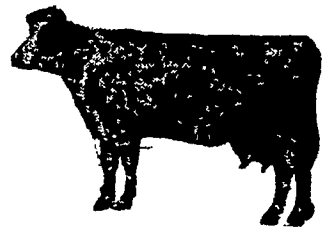
ALL DAY SALE

Saturday, March 5, 1960

T. K. Burkholder & Son Complete Dispersal Sale Of Holstein Cattle and Farm Equipment

At the farm, 4 miles south of Lancaster at the intersection of Routes 222 and 72, near Willow Street, Lancaster County, Pa.

40 Head Registered and Grade HOLSTEINS



(Bangs Certified and T.B Accredited) 20 COWS IN MILK, 10 BRED HEIFERS FOR SUMMER AND FALL AND 10 SMALL HEIFERS AND CALVES. Herd testing on Owner-Sampler plan and averages 3 7/8 for the year.

Daughter of: King Lauxmont Dunloggin Var 365 days, 15,269 milk, 523 B F Daughter of: Benton Sensation Conqueror 365 days, 12,162 Milk, 528 B. F Daughter of: Pabst Roamer Brucader 365 days, 15,344 milk, 509 B. F Daughter of: Penstate Lucifer Star 310 days, 15,117 milk, 505 B F

Several other Record Cows of over 400 pounds of fat Also daughters of Maplbend Dean King Posch, Penstate Lucifer Star, Wimar Jo Pabst Regal Lucifer, Quindale R. A Hope, Osbornada Spitfire, Pabst Roamer Brucader Entire herd bred to S P A B C. These cattle are large in size and have dairy type to match, be sure to see them sell

A full line of farm implements used on 2 farms as follows:



THREE TRACTORS

FARMALL M, FARMALL SUPER H with live P T O, cultivators and manure loader; FARMALL 100 with cultivators, tractors in good condition; IHC 3 bottom mounted disc plow, 3 bottom IHC. plow chief, 3 point Case coin planter IHC off-set disc on rubber, IHC 28 disc harrow, Holland tobacco planter, cultipacker, Weed-hog 4 section spring harrow, mounted IHC mower, Cockshutt grain drill seed drill, NEW HOLLAND 77 BALEER, BRADY HAY CRIMPER, (used 1 season) 110W IHC corn picker, New Idea manure spreader, IHC spreader, Bale elevator, 2 New Holland wagons, on rubber (20 ft bed and 18 ft bed) 22 ft. double tobacco ladders on rubber, IHC 4 bar hay rake hay tedder, (Some horse drawn machinery), Case PTO Corn harvester with corn and grass head; Gale blower; 1950 DODGE DUAL WHEEL 1-TON STAKE BODY TRUCK, FORD DUMP TRUCK (Tuxel dump) used on farm, 1000-gal water tank tobacco lath, shears, Groeder bale box, platform scales, tomato baskets, grain cradles, ensilage cart, feed cart, log chains, shovels, forks, tools of all kinds, heavy hay rope, corn sheller, Stewart cow clipper 2-UNIT DE LAVAL MILKER AND PUMP, milk cooler, 16 milk cans, 30 gal. electric (pressure) hot water heater, buckets, strainers, milk scales, poultry feeders automatic egg grader and many items too numerous to mention

20 TONS OF EAR CORN, SOME MIXED HAY This will be one of the big sales of this Spring, if you need good cattle or machinery be sure to attend. Sale to start at 10 30 A. M Terms by

T. K. Burkholder & Son

Diller & Kreider, Auct R D. 2, WILLOW STREET Carl Diller Pedigrees Lunch by Homebuilders S. S. Class, Mechanic Grove Church of the Brethren.