

At Lancaster Yards Quality' Receipts Down

James E. O'Hara,

In Charge, Market News Branch

CATTLE The receipts will total about 3000 head compared with 3377 head last week. Fifty percent of the receipts were slaughter steers and 40 per cent stockers and feeders.

Trading was slow on slaughter steers but moderately active on all other classes. Icy road conditions early in the week curtailed receipts

Quality of slaughter steers not as attractive as last week. Compared with last week's close, slaughter steers held steady. Cows were 50-75 higher. Bulls were steady. Stockers and feeders steady.

The bulk of the choice grade 1000-1300 lb slaughter steers made 26-25-28-50 with a lot Prime 1315 lbs at 28-75, Good to low Choice ranged from 24-26-50. Few lots of Good grade heifers brought 22-00-23-00. Utility and Commercial bulls made 20-00-23-50, Good grade fed bulls sold up to 26-00. Cutter and Utility cows commanded 15-25-18-00 and Commercial up to 18-50, while Canners and low Cutters made 14-00-15-25.

Medium and Good 600-900 lb. feeder steers 22-50-25-50. Lot Good and Choice 550-800 lb. stock steers 25-00-28-50. Few lots Good grade stock calves 27-00-30-00.

CALVES. Trading was active. Vealers sold weak. The receipts will total about 550 head less than last week. Good and Choice vealers made 30-00-37-00. Choice and Prime 38-00-41-00, with few to 42-00. Standard and low Good brought 23-00-29-00 while Utility sold down to

18-00. **HOGS.** Supply will total about 1500 head or about the same as last week. Trading was moderately active. Barrows and gilts sold steady to 25 - instances 50 - higher. Sows steady. U. S. 1-3 grade 190-230 lb. barrows & gilts ranged from 14-50-15-25. Hogs more uniform for grade and weight, including 1-2 grade 190-220 lbs. made 15-50-16-25, few lots mostly no. 1 195-220 lb 16-50-17-00, 230-250 lb butchers sold at 14-00 - 14-50; 300-600 lb. sows brought 8-00-11-00.

SHEEP. Trading was active. Woolled slaughter lambs strong. Receipts will total about 350 head - compared with 187 head last week. Bulk of this week's supply arrived on Wednesday, Good and Choice 80-105 lb slaughter lambs made 19-50-22-50 with a lot Choice 23-00, while Utility sold down to 15-00.

Average weight of slaughter steers increased over 1-176 lb average of last week to about 1180 lbs. General trade on slaughter steers steady to 50 lower except average choice and below weighing 1325 lbs. and heavier 50-1-50 lower with lighter weights below the good grade also as much as 1.00 lower.

Classified Advertising Rates

Use This Handy Chart To Figure Your Cost

Words	(1) Issue	(3) Issues
20 (Min)	\$1.00	\$2.40
21	1.05	2.52
22	1.10	2.64
23	1.15	2.76
24	1.20	2.88
25	1.25	3.00

Ads running 3 or more consecutive times with no change billed at 4c per word each time with 80c minimum.

LANCASTER FARM-
ING, P. O. Box 1524,
Lancaster, Pa.

Chicago Cattle Receipts Least Since October

WEEKLY REVIEW—

CATTLE — Local Receipts slightly below last week and the smallest since October. Percentages of various classes in Receipts little changed from last week with about 75 per cent slaughter steers, 15 per cent heifers, and 11 per cent sows.

Stockers and feeders in small supply. Percentages of various grades altered from last week with percentage of prime reduced from 14 per cent of last week which was the largest since December 1948 and estimated at 10 per cent.

Mostly prime 1135-1350 lb. slaughter steers 28-50-29-00, Around 20 loads 29-00 including several loads which were feedlot mates of 29-25 cattle last week. Load prime 1250 lb. Steers 29-75 mates of 29-75 cattle last Wednesday.

High choice and mixed choice and prime steers 1150 - 1400 lbs 26-75-28-50., Bulk choice steers under 1350 lbs. 25-25-27-50. Dozen or so loads choice 1345-1500 lb steers 24-50-25-00 late Good steers mostly 22-50-26-00 at the close.

Few choice and prime vealers 31-00-33-00, Good 29-00-30-00, standard 23-00 - 29-00, utility 16-00-23-00. Several loads choice 950 lb

New Holland

Trading Active, Higher

Trading was active at New Holland this week and even though the quality was not as good as last week slaughter steers showed gains of 25 to 50 and more in spots.

Cows and bulls at the Thursday market went 25 to 50 higher with vealers going as much as 2-00 higher at the close.

The February 18 sale had receipts of 814 cattle and 300 calves.

Choice steers were \$26.50-28.75 with one head of choice commanding 28.85. Good and low choice \$23.75-27.10. Standard down to \$22.

Good and choice heifers were \$22-25, standard down to \$19. Cutter and Utility cows - \$16-18.10 with a few to 18.85. Canners and low cutters \$14-16-25. Utility & common bulls \$20-24. Good grade fed bulls were up to \$25-60.

Lot of high good 609 lb stock steers - \$27.60. Few good and choice 800-975 lb feeder steers - \$23-50-25.60.

Good and choice vealers - \$31-39. Choice and Prime - \$39-50-44. Odd head to \$44-50. Standard and low good - \$24-30. Utility down to \$19.

The Feb 17 dairy cattle sale had receipts of 115 cows eight stock bulls and twenty stock heifers. The cow mar-

ket was steady on all kind with top holstein cows going over \$400.

Fresh cows, Holsteins, \$350-410, Guernsey - \$22-280, others - \$225-310.

Stock bulls - \$110-180, stock heifers - \$75-140.

The Feb 15 horse sale had only 130 head. The light market was influenced by the snow storm of last weekend. The market was very active of killers. All other kinds were active and steady.

Mules, pairs - \$275-520, singles - \$140-235.

Draft horses - pair - \$34-480, singles \$135-210.

Ponies - \$75-120, riding horses - \$125-245, driving horses - \$115-180. Killers \$9-10 cents.

FREEZING BAKED GOOD

U. S. Department of Agriculture scientists say there is an advantage in freezing rolls, even for as short a period as 24 hours. This way rolls that have been bought or baked for use next day can be kept fresher than they are stored at room temperature.

To freeze cinnamon dinner rolls wrap in cellophane soon after baking and put in freezer. Rolls can be kept in frozen storage for two months without serious loss of freshness.

When defrosting, it's best to keep rolls covered to prevent them from losing too much moisture. Defrost the rolls, particularly cinnamon rolls, in a place that is somewhat warmer than room temperature also helps maintain freshness.

MOUNT HOPE "QUEEN"

Figures on your Settlement Sheets will convince you that premiums for "Large" over "Mediums" and "Small" make the BIG DIFFERENCE. For Big Eggs and many of them... Buy from a selected FRANCHISED hatchery. Ask for QUEEN circular.

Johnson's Hatchery
EPHRATA, PA.
PHONE RE 3-2980

REIST'S Sure Crop Seeds

ALFALFAS

Vernal
DePuit
Ranger
Buffalo
Grimm

CLOVERS

Pennscott
Kenland
Penna. Grown
Mammoth

HYBRID CORN
DEVELOPED BY
PENN STATE EXP.
STATION

Get our prices
and save money

**REIST
SEED COMPANY**

MOUNT JOY, PA.
Phone OL 3-3821

J. C. Ehrlich Chemical Co., Inc.
736 E. Chestnut St. LANCASTER

BEST WISHES
To The
FUTURE FARMERS
of AMERICA

Our Best Wishes
TO THE
FUTURE FARMERS

FOR THEIR OUTSTANDING WORK IN AGRICULTURE

Complete Line of
FARM AND GARDEN SEEDS

INCLUDING

- Cert. DuPuits Alfalfa
- Cert. Vernal Alfalfa
- Cert. Buffalo Alfalfa
- Cert. Ranger Alfalfa
- Cert. Pennscott Clover
- Penna. Grown Red-Clover
- Birdsfoot Treefoil
- Ladino Clover
- Pasture Mixtures
- Grasses
- Seed Grains
- DeKalb Corn
- DeKalb Sorghum
- DeKalb Sudax
- Cert. Seed Potatoes

NOCLUZ ALFALFAS

CATALOG FREE UPON REQUEST

STORE HOURS

7 A. M. to 5 P. M. Monday thru Saturday

P. L. ROHRER & BRO., INC.

SMOKETOWN, PA.

Ph. Lanc. EX 7-3539

Need...

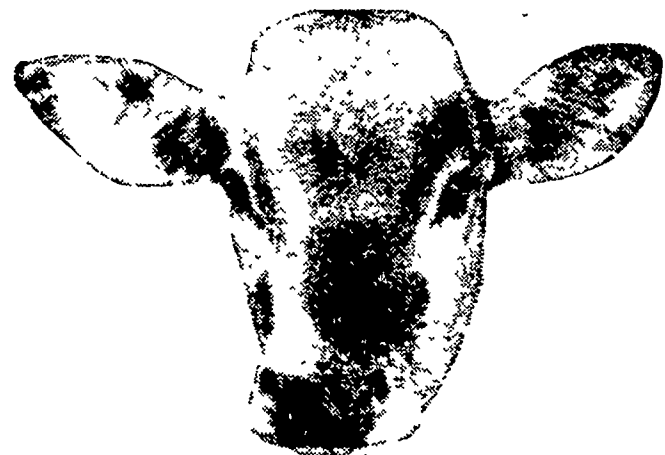
HAY-STRAW-EAR CORN Buy Now and Save!

More and more farmers are buying from us for better value and all around satisfaction.

Delivered — any quantity

Phone Strasburg OV 7-3211

ESBENSHADE TURKEY FARM
PARADISE, PA.



FREE!

\$1.98 Unbreakable Plastic
ALL-PURPOSE PAIL

... with every 4 bags of

Red Rose Milk Replacer

FFA WEEK FEB. 20 - 27

JOSEPH M. GOOD & SON
R. D 1, Bird-in-Hand, Pa.

**MOUNTVILLE
FEED SERVICE**

R. D 2, Columbia, Pa

JOHN H. BONHOLTZER
R. D. 4, Lancaster, Pa.

SNADER'S MILL
R. D 1, Stevens, Pa

**WALTER & JACKSON,
INC.**

Christiana, Pa.

LEROY GEIB, EST.
R. D 2, Manheim, Pa

I. B. GRAYBILL & SON
Refton, Pa.