

CLASSIFIED ADS

Farm Equipment

USED TRACTORS AND EQUIPMENT
tractors - Models B; WD D-17.
H & C with cults.
77 with cultivator
e loaders for AC, WC,
ohn Deere A & B
er Hay Conditioners.
66, 76, & 77 Balers
engine
ck our prices on new
sed equipment before
to farm sales
L. H. BRUBAKER
50 Strasburg Pike
Lancaster, Pa.
EX 3-7607
Strasburg OV 7-6002
Lititz MA 6-7766
e Fri evening, Feb. 26
r open house motion
e program See our ad
ge 7 of this issue

ur New Vicon Acrobat
e very rake Delivered
89 Hiestand, Inc., R1,
ta Ph HAZel 6-9301

Blower Feed Mixer,
lb capacity, never
Big discount Reist
Co., Mt Joy, Phone
3821

USED TRACTORS
=77 w/elect. hydrau-
rver #88 Diesel w/ele-
draulic Super H Far-
Farmall 400 Diesel.
ll Super C w/fast hitch
ll H Farmall C w/cul
JD A w/roll-o-mat-
d power-trol. J.D. A
er trol Farmall Super
front end loader and
hoe I H. 300 w/front
pader

**10 Day Special on
ay Crushers - \$695.**

USED BALERS
nstrator N H. 67 Dem
ter I H 46. Demon-
55T I H 1 =77 NH
ter and tension 1=77
=66 N H. w/engine
N H 1 JD 14T
y used JD Bulk

L. DIEM & SONS
Lititz, Pa.
Ph MA 6-2131

sprayers, demonstrat-
attle, Gehl Forage Har-
Burch disc harrows
ly's Farm Service, New
ad Ph EL 4-2214

s Hay Conditioning
r - mow & condition in
peration 3 acres an
Hiestand, Inc., R=1,
ta HAZel 6-9301

l new low price on
tor and welder \$100
Hiestand, Inc. Marietta
AZel 6-9301

milk coolers. Clark
RD 1, Kinzers, Pa.
house SO 8-8501

as the time to have
dan's barn or chicken
an conditioned by
O-Matic Control ven-
n without drafts. All
ation guaranteed. Hie-
Inc Marietta R1 Ph
6-9301

Stock For Sale

EX SADDLEBACK —
e direct—Top quality,
e free, meat type swine
est British pedigree
No contract restrict-
American Registry
Reasonable prices
Smith Teeswater,

Household Goods

uticis and adding ma-
new and used. New
o Shavers - \$15.95
in. call or write for
emonstrations. Nolt's
dale, Pa. Phone Terre
1 5 2526

space oil heaters and
ngler oil and gas heat-
AI-FM portable radios
Brubaker, 350 Stras-
Pike, Lancaster Phone
7-007, Strasburg OV 7-
Lititz MA 6-7766

ic latest in Blackstone
Washers see
**RRS IMPLEMENT
STORE**
Willow EX 3-8311
n Ranges - Water Heat-
Washers & Dryers-Ben-
reczers, Bottled Gas &
Benj. Shenk, Lam-
Pa EX 7-2486.

Mail Box Market

FREE, Subscribers to Lan-
caster Farming will receive
one advertisement each mon-
th in our Mail Box Market.
Subscribers using the Mail
Box Market will be governed
by the following rules:
Limit your advertisement to
five lines which means not
over 25 words; All adver-
tisements must be in our
hands by Monday 6 p.m. or
same will be held over for
next week's paper; No busi-
ness advertisements accepted

FOR SALE: Brown Leg-
horn bantams, 1 oil heater,
refrigerator as good as new.
Purebred Nubian Buck for
service 14 ft shoe case C
Heller, R4, Manheim, Pa.

FOR SALE. Esco 4-can milk
cooler Good condition. Ed-
win B Weaver, R1, East
Earl, Pa.

FOR SALE: 2 9x24" 4 ply
tractor tires, tubes, and
lins, good rubber Daniel
Hoover, R1, Bareville, Pa

WANTED One Nubian Buck
old preferred or young kid
if from good stock Joseph
M Hoover, R3, Ephrata, Pa

WANTED: Graham plow
Stephen S. Stoltzfus, Box
196, Gap, Pa.

FOR SALE Oliver Raydex
plow, 2 14" bottom on steel
Excellent shape \$90.00 Ph
Mt. Joy OL 3-5220

FOR SALE: Heatrola \$16
Corn Sheller with pulley
\$10 1 HP motor Whirla-
way egg washers \$35 each.
John Becker, R1, Elizabeth-
town Ph EM 7-2056

FOR SALE Good Holstein
Bull Sire by S H 51, and
589 lb fat. Dam T.B tested
vaccinated EX 2-4439.

FOR SALE Wood, cut to
any desired length for stove
and fireplace, delivered. Call
Kirkwood LA 9-2367.

FOR SALE. Rear mounted
2 row Allis Chalmers corn
planter—\$100 Also 2 sec-
tion rotary hoe trailer style-
\$75 Phone LO 9-1580 Roy
B. Erb, 118 Kreider Ave.,
Lancaster

Poultry & Supplies

Order Your H & N
Nick Chicks For
March & April Delivery Now
AMSTUTZ HATCHERIES
New Holland EL 4-2232
H&N Nick Chicks

5000 pullets - 16 weeks old
Hiestand, Inc., R. 1, Mariet-
ta Phone HAZel 6-9301

10 used Kitson poultry ven-
tilators Good selection of
used egg washers Hiestand
Inc Marietta R1 Phone HA-
zel 69301.

See our new Chore-Time
Air Cushion Egg Washer
We repair all makes of egg
washers Hiestand, Inc., Ma-
rietta HAZel 6-9301.

Help Wanted

Couple to operate pullet
raising farm Must have go-
od references, include in
first letter Write Box 7,
Lancaster Farming, P O
Box 1524, Lancaster, Pa

Auctioneers

Lackey Auction coming up
Tues, Feb. 23 at 1 p.m. Fol-
low arrows off Rte 84 be-
tween Wellsboro and Toga-
27 Reg Guernseys and Hol-
steins—a nice herd here, plus
all equipment, most of it
like new! 2 Tractors (I-H
'350" and Ford) - NH Bal-
er - Spreader - new Elevat-
or - Brand new Badger
Barn Cleaner - small tools-
Produce See posters and
full list of this good little
sale, owned by Robt Lackey
Jr and sold by Rumseys'

Stanley H. Deiter
Auctioneer And Appraiser
LAMPETER
Ph. Lancaster EX 4-1796

CHOOSING A WINDOW TREATMENT

When planning a new
window treatment, check
yard goods and ready-made
draperies and curtains, sug-
gests Erma L Langford,
Penn State home furnishings
extension specialist. Study
labels and educational ma-
terials and talk with sales-
persons to get as much in-
formation as possible about
the fabrics Keep all labels
and information for refer-
ences, and learn how to care
for the fabrics

Legal Notice

**PARADISE TOWNSHIP
SCHOOL AUTHORITY**
Lancaster County, Penna
ANNUAL REPORT
For the Fiscal year ended
October 31, 1959
Statement of Financial
Condition October 31, 1959

ASSETS	
Fixed Assets	
Elementary School Project	215,082 25
Funds in custody of Trustees - Funds consist of Cash on Deposit unless otherwise stated	
Bond fund	5,000 00
Bond Reserve Fund	
Cash on Deposit	3,247 58
U S Treasury Bonds at Cost	8,685 00
	11,932 58

(9M, 3% due February 15, 1964;	
Market Value \$8,476.92)	
Total Funds in custody of Trustee	16,932 58
Funds in custody of Authority	
Administrative Ex- pense Fund	734 28

Total Funds in custody of Trustee and Au- thority	17,666 86
Total Assets	232,749 11

LIABILITIES & EQUITY	
Funded Debt	
School Revenue Bonds, Series of 1954, Initial Issue \$215,000 00	
Funded Debt Balance Oct. 31, 1959	195,000 00
Net Equity - without provision for Depreciation on School-Property	37,749 11

Total Liabilities and Equity	232,749 11
------------------------------	------------

Project includes in addition to the amount stated above the value of the former High School Building and Site which were decided to the Authority by the School District without money consideration

NOTE - Trustee holds in its Coupon Account \$2,696 25 for payment of coupons due November 1, 1959 and \$90 00 for payment of prior period matured unsurrendered coupons

Cash Statement of Combined Fund Transactions November 1, 1958 to October 31, 1959	
Income Transactions	
Annual Rent received from the School District of the Township of Paradise	13,325 00
Net Interest received on Bond Reserve Fund	133 51
Total Income	13,458 51

Deduct Expenses	
Interest paid on Bonds	5 392 50
Trustee Fees	100 00
Solicitor's Fees	35 00
Auditing Fees	200 00
Advertising Financial Report	31 25
Total Expenses	5,758 75

Net Cash Income for year	7,699 76
Principal Transactions	
Add. Authority Fund Balances, November 1, 1958	14,967 10
Total Funds after addition of current year income	22 666 86
Deduct: Funded Debt Retirement—	
Bonds Nos. 16 20 Inclusive matured November 1, 1958	5,000 00

Fund Balances - October 31, 1959, as disclosed by accompanying "Statement of Financial Condition"	17,666 86
Trout, Ebersole & Company Certified Public Accountants Lancaster, Pennsylvania	

Total Income	13,458 51
Deduct Expenses	
Interest paid on Bonds	5 392 50
Trustee Fees	100 00
Solicitor's Fees	35 00
Auditing Fees	200 00
Advertising Financial Report	31 25
Total Expenses	5,758 75

Net Cash Income for year	7,699 76
Principal Transactions	
Add. Authority Fund Balances, November 1, 1958	14,967 10
Total Funds after addition of current year income	22 666 86
Deduct: Funded Debt Retirement—	
Bonds Nos. 16 20 Inclusive matured November 1, 1958	5,000 00

Try a Classified

New Holland Sales Stables

Horse Sale — Every Monday at 11 A. M.

Dairy Cattle and Hogs—

Every Wednesday at 12:30

Beef Cattle and Calves—

Every Thursday at 12:30

Every Thursday we will try and have from 150 to 200 Stockers and feeder cattle for sale. These cattle will be sold immediately after the bulls (About 1:00 P. M.)

JOHN H. GINGRICH, Mgr.
Ph. New Holland EL 4-2194 New Holland, Pa.

PUBLIC AUCTION

EVERY TUESDAY

Starting Promptly at 2 p.m.

Starting with bulls, steers, heifers, cows, feeder pigs, calves and hogs.

We get top \$\$ for your Livestock
Give us a call — HI 2-4181

Vintage Sales Stables, Inc.

VINTAGE, PA.
Frank Dussinger, Manager

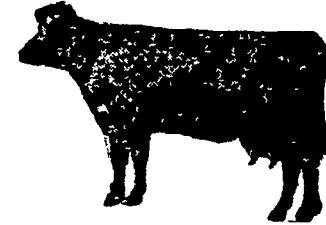
ALL DAY SALE

Saturday, March 5, 1960

T. K. Burkholder & Son Complete Dispersal Sale

Of Holstein Cattle and Farm Equipment
At the farm, 4 miles south of Lancaster at the intersection of Routes 222 and 72, near Willow Street, Lancaster County, Pa.

40 Head Registered and Grade HOLSTEINS



(Bangs Certified and T.B Accredited)
20 COWS IN MILK, 10 BRED HEIFERS FOR SUMMER AND FALL AND 10 SMALL HEIFERS AND CALVES.
Herd testing on Owner-Sampler plan and averages 3 7/8 for the year.

Daughter of: King Lauxmont Dunloggin Var
365 days, 15,269 milk, 533 B. F
Daughter of: Benton Sensation Conqueror
365 days, 12,162 Milk, 528 B. F.
Daughter of: Pabst Roamer Brucader
365 days, 15,344 milk, 509 B. F
Daughter of: Penstate Lucifer Star
310 days, 15,117 milk, 505 B. F
Several other Record Cows of over 400 pounds of fat. Also daughters of Maplebend Dean King Posch, Penstate Lucifer Star, Wimar Jo Pabst Regal Lucifer, Quinndale R. A Hope, Osborna's Spitfire, Pabst Roamer Brucader
Entire herd bred to S P A B C. These cattle are large in size and have dairy type to match, be sure to see them sell

A full line of farm implements used on 2 farms as follows:

THREE TRACTORS

FARMALL M. FARMALL SUPER H with live P T O, cultivators and manure loader; **FARMALL 100** with cultivators, tractors in good condition; I.H.C. 3 bottom mounted disc plow, 3 bottom I.H.C. plow chief, 3 point case corn planter, I.H.C. off-set disc on rubber, I.H.C. 28 disc harrow, Holland tobacco planter, cultipacker, Weed-hog 4 section spring harrow, mounted I.H.C. mower, Cockshutt gra a drill, seed drill,
NEW HOLLAND 77 BALER, BRADY HAY CRIMPER. (used 1 season); 1 row I.H.C. corn picker, New Idea manure spreader, I.H.C. spreader Bale elevator, 2 New Holland wagons, on rubber (20 ft. bed and 18 ft. bed) 22 ft. double tobacco ladders on rubber, I.H.C. 4 bar hay rake, hay loader, (Some horse drawn machinery), Case P.T.O. Corn harvester with corn and grass head; Gale blower; 1950 **DODGE DUAL WHEEL 1-TON STAKE BODY TRUCK,** **FORD DUMP TRUCK** (Truxel dump) used on farm, 1000-gal. water tank, tobacco latih, shears, Greider bale box, platform scales, tomato baskets, grain cradles, ensilage cart, feed cart, log chains, shovels, forks, tools of all kinds, heavy hay rope, corn sheller, Stewart cow clippers.
2-UNIT DE LAVAL MILKER AND PUMP, milk cooler, 16 milk cans, 30 gal. electric (pressure) hot water heater, buckets, strainers, milk scales, poultry feeders, automatic egg grader and many items too numerous to mention

20 TONS OF EAR CORN, SOME MIXED HAY
This will be one of the big sales of this Spring, if you need good cattle or machinery be sure to attend Sale to start at 10:30 A M Terms by

T. K. Burkholder & Son
Diller & Kreider, Auctioneers
R D. 2, WILLOW STREET
Carl Diller Pedigrees
Lunch by Homebuilders S. S. Class, Mechanic Grove Church of the Brethren.