

MUST EAT

egg production check on the condition of the laying flock, F H Leuschner, Penn Extension poultry specialist. One way to increase consumption is to furnish in a different and form. The simplest to feed pellets, but ash also is appealing birds



SECOND AND THIRD PLACE IN THE Handyman 4-H club roundup on Wednesday night were Charles I Warfel III and Richard Warfel, sons of Mr and Mrs Charles Warfel, Conestoga R1. Charles, 14 year-old 9th grade student at Penn Manor won second place with his lawn chair while his 12 yr-old brother took third place with his picnic table. Richard, a seventh grade student at Penn Manor, has carried projects of broilers, flowers, and capons in his two years in 4-H club work. Charles has carried projects in capons, broilers, corn and sweet potatoes in his four years in 4-H. —LF PHOTO



You save money with our Texaco "All-Star" heating oil service! **GARBER OIL CO.** 105 Fairview St. MOUNT JOY, PA. Ph. OL 3-2021

Local Farmers Recieve Award

George W Jackson and Sons, Christiana R D, were honored at a luncheon attended by over 200 farmers and representatives of the De

Kalb company at the Hotel Brunswick on Monday

Receiving the trophy for high county yield on a five acre plot of DeKalb corn, the Christiana farmers posted a yield record of 137.96 bushels per acre

Awards were made by Elvin Herr, sales representative for the company

Farm Bureau

(From page 1) committee has announced the following slate of candidates Northwestern District — Henry E Shenk and Clarence Douple, both of Manheim R2

Northeastern District — Allen Risser, Bareville RD 1, and Jacob Hershey, Lititz, RD 4

Southwestern District — J Everett Kreider, Quarryville, RD 1, and John W Sangrey, Conestoga, RD 1

Southeastern District — Elvin Hess, Sr, Strasburg, RD 1, and Raymond T Witmer, Willow Street, RD 1

Bulkins said additional nominations may be made at

the meeting. Musical selections will be presented by Pequea Valley High School students, and group singing will be led by Willis S Nitz

FALL CORN BORER COUNT DOWN

A cooperative State Federal survey made last fall in 29 States shows that European corn borer numbers were slightly lower than in the fall of 1958. In the Corn Belt, the largest decrease showed up in Iowa, Kansas, Missouri, Nebraska, and North Dakota. Slight decreases were recorded in Illinois and South Dakota, while slight increases were noted in Indiana, Minnesota, Ohio, and Wisconsin

CUSTOM BULK SPREADING

Dealers in

Davco Granulated Fertilizer

- Super Gro
- Rock Phosphate
- Green Sand
- Hybrotite

BAGS OR BULK

Prompt and Reliable Service For your Fertilizer Needs Call

SMUCKER BROS.

BIRD-IN-HAND, PA. Ph. Intercourse SO 8-3610

DARBY LEGHORNS

are GREAT LAYERS

Year After Year, 1951 Through 1958 Darby Leghorns have had the highest 10-YEAR AVERAGES (For Leghorns) in Standard Laying Tests

Again in 1958 . . . Top PEN OF NATION— ALL BREEDS

Our DX Strain Cross Record—3887 Eggs, 4207 Points. In 1959, Darby DX was TOP Leghorn Pen in Western N. Y. Random Sample Test

(1st in total eggs and value of eggs per pullet)

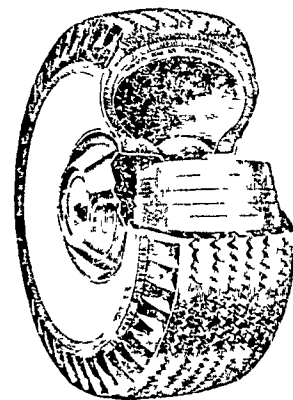
PHONE EMPIRE 7-3246

The Keener Poultry Farm

R. D. 1 ELIZABETHTOWN, PA.

SEIBERLING TIRES

- PASSENGER
- TRUCK
- TRACTOR
- GUARANTEED RETREADING



H. M. Krady

Passenger, Truck and Farm Tires

608 N. PRINCE STREET

PH. EX 2-9507

OPEN HOUSE

THURSDAY

FEBRUARY 25th

Afternoon & Evening

Entertainment — Door Prizes Refreshments



FIELD DAY — APRIL 30th

Get your tickets in the barrel for our Field Day!



CHARLES B. HOOBER

INTERCOURSE, PA.

Ph. Southfield 8-3501

1959 Random Sample Comparisons

OF THE

Shaver Starcross 288 Leghorns

Test	Shaver Starcross 288	Average of All Other Nationally Franchised Entrants	Extra Profit For Shaver Starcross
Western New York	\$2.70	\$2.56	plus 6%
Missouri	2.79	2.60	plus 7%
British Columbia	2.40	2.22	plus 8%
California	4.17	3.59	plus 16%
Central Canada	2.42	1.87	plus 29%
Average	2.89	2.57	plus 13%

The above table demonstrates the outstanding profit capacity of SHAVER STARCROSS 288 in a variety of widely separated Official Test locations. Please note that these were the only Random Sample Tests in which the SHAVER STARCROSS 288 was entered in 1959.

You will notice that there are no skeletons in our closet, at every test we earned a clear-cut "extra profit".

GREIDER LEGHORN FARMS, Inc.

MOUNT JOY R. D. 1

OL 3-2455

