

Poultry Cheap And Plentiful

Housewives were notified by State Secretary of Agriculture William L. Henning that supplies of poultry meat following the Holidays will be at their mid-winter peak and that prices will be attractive to strained food budgets

"Broiler and frying chickens, roasters, stewing hens and turkeys will be in good supply during January at prices attractive to housewives whose food budgets have been strained by holiday entertaining," Henning said. "Poultry is an excellent source of high protein meat" "Pennsylvania ranks 13th in the production of broiler and frying chickens and high in the production of turkeys," he said. "Thus Keystone State housewives can be assured that the poultry they buy is fresh and high in quality, coming from nearby poultry farms."

Henning noted that some potential buyers of poultry meat may be hesitant about making purchases due to publicity about the use of Diethylstilbestrol in the production of caponettes. This product has been removed from the markets through voluntary action of the manufacturers and birds that have been treated are being purchased by the federal government

The price for broiler and frying chickens normally is

at or near its lowest point for the year in early January. Peak prices are reached during the summer months when demand for these birds is greatest for use by home barbeque chefs and for light hot weather meals.

"This is a good opportunity to take advantage of this price slump," Henning said. "Poultry can be used for hearty cold weather meals as well as in the summer."

RADIATION DETECTOR OF FAT IN MEAT

The Agricultural Marketing Service has installed at Beltsville a device that measures the lean and fat content in meat. It counts gamma ray emissions that come naturally from the isotope potassium-40, which has always been present in minute amounts in animal tissue. Since most of this isotope occurs in muscle tissue instead of fat, the number of impulses sent out gives an accurate measurement of the proportion of fat to lean meat. AMS is using the radiation detector in its work of establishing more objective measurements of quality in food. AMS officials say the device could be modified for meat industry use so it would reject automatically any piece of meat that had too much fat to be included in a given grade. They also say it could be modified to measure fat in live animals, which would help breeders select the most desirable animals.

Read the Lancaster Farming Paper, Lancaster County's own farm paper.

"You are only young once, but you can stay immature indefinitely."



FEED PIONEER DRY & FRESH

— FOR —

- Better Body Condition
- Easier Calving
- Less Udder Problems
- Higher Production
- Use As A Complete Feed

Joseph M. Good & Sons

LEOLA — QUARRYVILLE

John Deere Day FRIDAY, JAN. 29th

JANUARY 23 — 29 & 30

WILL BE

Special Bonus Days

ON SOME FARM EQUIPMENT DURING OUR
70th ANNIVERSARY SALE

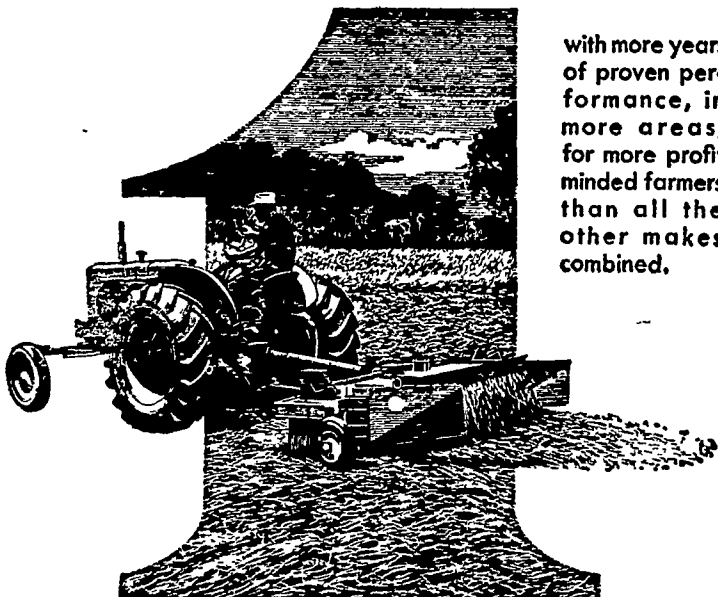
A. B. C. Groff

NEW HOLLAND

PHONE EL 4-8001

Cunningham

THE WORLD'S NUMBER ONE HAY CONDITIONER



with more years of proven performance, in more areas, for more profit minded farmers than all the other makes combined.

Mann & Grumelli Farm Serv.

QUARRYVILLE, PA.

Phone ST 6-3630

L. H. BRUBAKER

LANCASTER, R. D. 4

LITITZ, R. D. 3

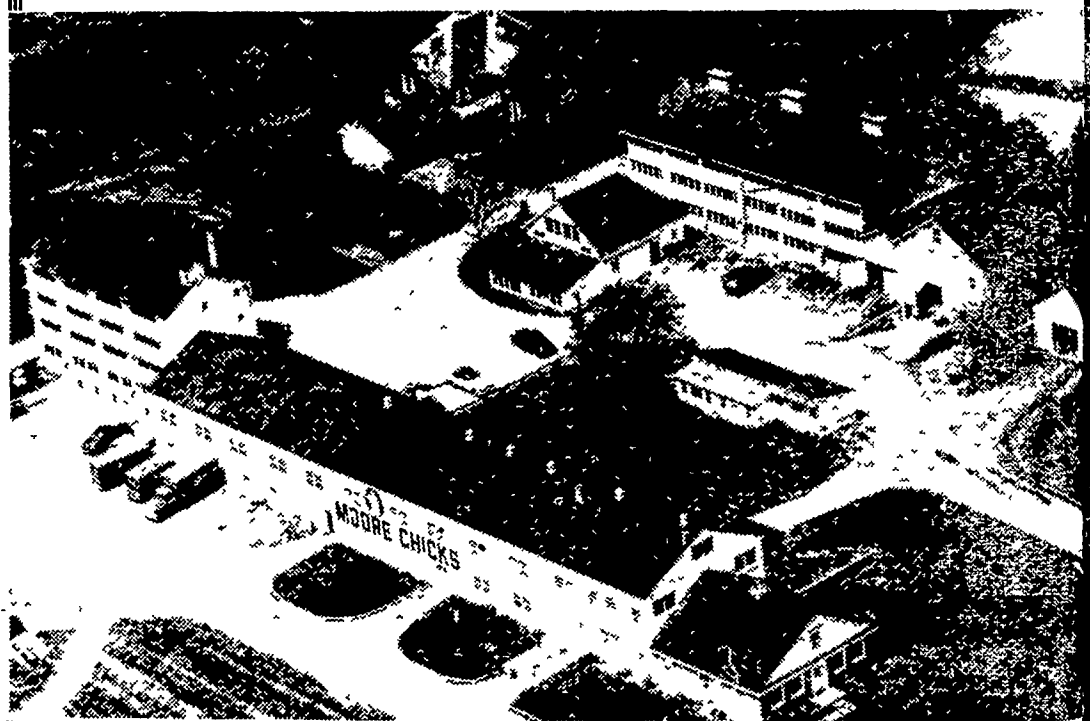
SNAVELY'S FARM SERVICE

NEW HOLLAND

Phone EL 4-2214

You Are Welcome to . . .

OPEN HOUSE AT MOORE FARMS



SATURDAY, JANUARY 30th

- Program of interest to White Rock flock owners at 12:00 P. M.
- Program for broiler growers at 1:00 P. M.
- Program concerning the Ghostley Pearl at 2:00 P. M.
- Conducted tours of hatchery and laying houses continuously from 9:30 A. M. to 4:00 P. M.

Refreshments

MOORE FARMS

780 EDEN ROAD

PHONE EX 3-3882

LANCASTER, PENNA.

North of 230 By-Pass, East of Route 222 Intersection