

More Pigs

State Farrowings Increase

Pennsylvania farmers contributed to the largest pig crop in the United States since 1943 by jumping farrowings 13 per cent during 1959, the Crop Reporting Service of the State Department of Agriculture reported today.

The Pennsylvania 1959 fall pig crop totaled 412,000 head, 8 per cent above a year earlier and the highest since 1956. For the year of 1959 as a whole, the pig crop was 880,000 head, up 13 per cent from last year, but still 12 per cent below average.

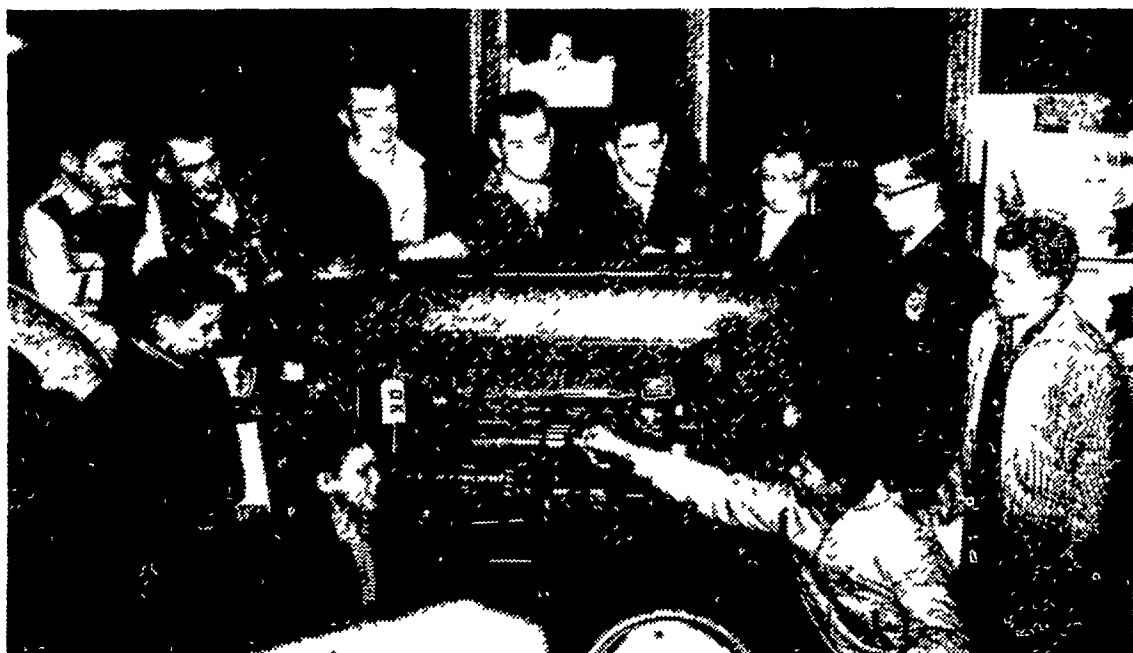
Based on breeding intentions, Pennsylvania farmers now plan to farrow 70,000 sows, in the spring of 1960. If their fall average of 7.1 pigs a litter is realized, this will mean 8 per cent more pigs farrowed next spring than last, but still 11 per cent below average.

There were 101.6 million head of pigs farrowed in the

United States this year, 8 per cent more than in 1958. This year's crop was the largest since the record 121.8 million head produced in 1943. The national spring pig crop at 58.6 million was up 12 per cent and the fall crop of 43 million was up 2 per cent.

The national 1960 spring pig crop is estimated to be about 52 million head, 11 per cent below 1959.

Pennsylvania farmers are continuing a trend toward earlier farrowings, the Crop Reporting Service figures show. In June 6,000 sows farrowed; July, 9,000; August, 14,000; September, 15,000; October, 9,000; and November, 5,000.



MEMBERS OF THE SOUTHERN TRACTOR 4-H Club gather around a tractor at the Conestoga Farm Service, Quarryville, on December 28. The club was scheduled to be organized, but because of the heavy fog and light attendance at the meeting, election of officers was postponed until the next meeting. Paul Trimble, Quarryville R1, a third year member, right foreground, explains how the "fire" travels through the distributor and the coil. Looking on from the seat is James Esbenshade, Quarryville R2; from in front of the rear wheel left to right, Earl Wenger, Quarryville R1; and Larry Sinclair, Drumore, all first year members. Behind the tractor left to right are the three leaders, Fred Frey, Quarryville R2; Merle Groff, Strasburg R1; Harold Rohrer, Lancaster R7, and Donald Trimble, Quarryville R1, a third year member; Gerald Kreider, of Quarryville R1; Robert Wenger, Quarryville R1; and Kenneth Rutt, Quarryville R2, all second year members. Winthrop Merriam, Assistant County Agricultural Agent represented the Extension office. —L F PHOTO

Lancaster Farming
Classified Ads
Get Results

PENT-A-CIN

for truly effective Mastitis control

Effectiveness never before possible is now available with the broad spectrum formulations of Rockland PENT-A-CIN mastitis products. Available in injectors, multi-injectors and tubes—to meet every mastitis need. Newest mastitis fighter is wonder-working Neo-Pent-A-Cin, which treats all forms of mastitis without using Penicillin. Stock up at your dealers now, or write us.

ROCKLAND CHEMICAL CO.
West Caldwell, N. J.

Guernsey Records
Are Announced

Eight registered Guernsey cows in Lancaster County have recently completed official production records according to information received from the American Guernsey Cattle Club.

Three of the cows are from the herd of J. Rohrer Witmer, Willow Street, two are in the herd of Hervey Ferguson, Kirkwood, and six are owned by Raymond F. and Louise A. Witmer, Willow Street.

All the records were made on twice-a-day milking in 305 days and were super

vised by the Pennsylvania State University.

The two cows in the Ferguson herd and their records are Walnut Grove Rillma Josephine, and eight yr old producing 10,010 lbs. of milk and 526 lbs. of fat, and Walnut Grove Coronation Nan, a junior three year old with 10,670 lbs of milk and 503 of fat.

J. Rohrer Witmer's cows and their records are High Lawns Lady Jane, a nine year old with 11,710 of milk and 603 of fat; McDonald Farms Le Shuning Star, a five year old giving 11,010 milk and 563 fat, and Wilmas P Penny, a senior three year old producing 9,970 of milk and 521 fat.

Raymond and Louise Witmer's cows are as follows: Penn Del Drucilla Cherry, a junior three year old — 9,520 milk and 519 fat; Penn Del Kings Quail, a junior three year old — 10,680 of milk and 580 fat; Penn Del Kings Polly Anna, a senior two year old — 12,720 milk and 629 fat; Penn Del Kings Poinsetta, a junior two year old — 11,150 milk and 583 fat; Penn Del Kings Fancy, a junior two year old — 10,800 milk and 535 fat; and Penn Del Kings Belle, a junior two year old — 10,670 milk and 528 pounds of fat.

Dairy Support
Buying Is Down

Price - support purchases of dairy products were down 23 percent in the first 11 months of 1959 compared to the same period of 1958, the U. S Dept of Agriculture reported in a year-end summary of dairy price-support activities.

A better supply-demand situation, resulting in strengthened markets, made it possible for USDA to carry out its mandatory dairy price - support obligations with less buying than in previous years.

Disposals of dairy products reflecting the reduced purchasing, were also down from a comparable 1958 period by more than twenty-five percent. However, disposal activity was at a high enough rate to reduce USDA's uncommitted dairy stocks to their lowest level since mid-June 1951.

Total purchases of dairy products during the Jan.-Nov. 1959 period amounted to 853.9 million pounds, including 123.7 million pounds of butter, 57.2 million pounds of cheddar cheese, and 673 million pounds of nonfat dry milk.

Lancaster Farming advertising brings results.

LOWER YOUR EGG
PRODUCTION COSTS!

Many of our customers manage to get top production per bird housed with feed conversions of 4 pounds per dozen or close to it.

These records and low costs are built into our Early Bird Laying Feeds.

May we help you?

The Way The Twig is Bent...!

Remember your 1960 EGG PRODUCTION COSTS and your flocks PERFORMANCE will be determined by the way you start, feed and manage your replacement stock NOW.

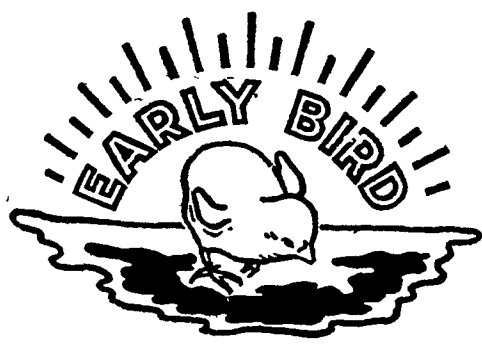
Don't be penny wise and pound foolish!

Do it right!

For a record producing "Feeding and Management Program" for replacement stock see or call us today.



For the finest poultry service anywhere, contact your Miller & Bushong Representative or call Lancaster EXpress 2-2145



Miller & Bushong, Inc.

ROHRERSTOWN, PA. Ph. Lancaster EXpress 2-2145

Manufacturers of Poultry and Livestock Feed Since 1875