

## ● Barn Ventilation

(From page 1)

fan should be controlled by a thermostat in order to keep a more uniform temperature in the barn. Most operators set the thermostats to operate when the temperature is above 50 to 55 degrees F

### Fan Size

Two of the most important items to bear in mind when investing in the fan exhaust system is to get a fan large enough to remove sufficient air, and secondly, have the barn sufficiently tight so the fan must get its air from many small places rather than a few large inlets. Present requirements state that a fan (or fans) should be capable of removing at least 200 cubic feet of air per minute per 1000 pounds of animal units (or animal weight). This is definitely necessary if the barn is to be properly ventilated.

### Location

In the area where the fan

is located (for at least 20 feet each way) the barn must be very tight; doors, hay-holes, manure cleaner outlets, and cracks should be covered and padded to make as air-tight as possible unless this is done the fan will draw its air from nearby and not move air from the other side or end of the barn. All windows and doors should be kept closed during the operation of the fan during the winter mo. An open window or door may mean a draft on a cow near that point and bring about colds or a mastitis infection.

The fan may be located at a number of places throughout the barn with success however, usually it is placed in the colder end or side of the barn in the attempt to have a more uniform barn temperature in cold weather; also, it is preferred that the fan be placed over or near the calf pens in order to use the animal heat to keep the small calves warm

### Advantages

Mastitis prevention is more easily attained with a proper fan exhaust system; drafts are eliminated have often been the cause of cases of infection. Cow comfort is much better in barns with the proper ventilation system which is necessary for high, efficient production. Foul odors & dust are removed from the barn which contributes toward higher quality milk production

Dripping and sweating of the windows or walls of a barn are symptoms of needed ventilation attention; strong barn odors on clothing and feed supplies are additional indications. The proper insulation of the ceiling above the cows is very important to prevent condensation and dripping. This might best be achieved by keeping the barn floor above the herd covered with 6 to 8 inches of straw, hay, corn fodder or corn cobs during the winter months.

Since most local dairy

## Lancaster Farming, Saturday, December 26, 1959—5

### EWES DO WELL ON WINTER SUPPLEMENT

Research at the South Dakota Experiment Station shows that ewes respond favorably to supplements of both protein and energy during most winters. The South Dakota experiments showed that ewes winter grazed on range in excellent condition and fed two-thirds pound of a 20 percent protein supplement daily from November 1 to lambing time showed the best response on these four factors. Best winter ewe gain, grease fleece weight, lamb crop born and weaned, and lamb weight weaned per ewe. Those on either one-third pound of a 40 or 20 percent supplement for the same period rated intermediate, and lowest in rating was a group of ewes on one-third pound of a 40 percent supplement for only the last six weeks of pregnancy.

Dust poultry laying house lights every week. The dust can greatly reduce the light rays reaching hens, thereby cutting down stimulation given to egg production.

University veterinarians recommend completion of dehorning between the end of fly season and the beginning of extremely cold weather.

### Lancaster Farming Classified Ads Get Results

**MORE PROOF...it pays to feed PURINA**



Myron E. Hawbaker of Mercersburg, R. D. 2, Pa., and Purina Serviceman; Ken Peiffer (l.), check location records on a top producer.

Franklin County Guernseys on Purina

**average 291,600 lbs. milk per man!**

Myron E. Hawbaker of Mercersburg, R. D. 2, measures dairy profits in terms of milk per man. His twenty-seven Guernseys are averaging over 900 lbs. of 42% milk every month... a per-man production index of 291,600 lbs. milk. To help them make this tremendous record, the Hawbaker herd is fed one of Purina's high-efficiency milking rations built from Purina Concentrates and home-grown grain. Good quality alfalfa-timothy hay and corn silage aid in keeping production and body weight up during late summer. "Ken Peiffer, from Detrich's Elevator in Williamson, is always on hand to help me out with any problems that come up," notes this dairyman. "And I can bring my grain to the elevator in the morning, have it mixed and brought back the same day. That's what I call service."

Many successful dairymen like Myron Hawbaker are finding a research-backed Purina Dairy Program their key to dairy profits. Stop in and ask us for details of this program.



Blend & McGinnis  
Aitglen

S. H. Hiestand Co.  
Salunga

Whiteside & Weicksel  
Kirkwood

Warren Sickman  
Pequea

Snader's Mill  
Mt. Airy

John J. Hess  
Kinzer - Vintage

John J. Hess, II  
Intercourse - New Providence

John B. Kurtz  
Ephrata

Wenger's Feed Mill, Inc.  
Rheems

James High  
Gordonville

B. F. Adams  
Bird-in-Hand



## BURLING'S CHICKS For Top Quality Eggs

This year, at NEPPCO, our egg quality was highest among all entries. These were hen eggs—after they had been laying 12 to 14 months. That's when Quality Eggs pay best.

At Bill Burling's you can find just what you want.

You have eight top strains and crosses to choose from. Our Sexlinks are very popular with nearby farmers.

Then there are the "pick" of the best strains and crosses for Broilers, or meat-and-eggs.

One customer said our Carey Leghorns are: "Just wonderful birds to handle". That's important in high-powered Leghorns.

### Burling's Big 8

Carey's Famous Random Sample Test-winning Leghorns. A customer made a 270-egg average on 1800 birds!

Ready - to - Lay Pullets Available At ALL Times

## BURLING'S HATCHERY

Box F

Oxford, Penna.



**FOR MORE PROFITS, PLANT AMERICA'S GREATEST HYBRIDS**  
AND FOR TOP YIELDING CLOVER, ALFALFA, OATS SOW

### HOFFMAN SEEDS

SEE YOUR LOCAL HOFFMAN SALESMAN OR  
Phone Landisville TW 8-3421

Merryknoll Sexlink (Rock x Red)—Bred by electronic "brain" methods.

Golden Sexlinks — Harco male x Andrews White Rock female. They're tough, and great layers.

Cobb's White Rocks — Broiler Test winners and good layers too.

Vantress x Cobb White Rocks — Popular for meat.

Garrison Cornish Male x Cobb White Rock female. Super meat quality.

Gove's Barred Rocks.. Still a favorite of many farmers.

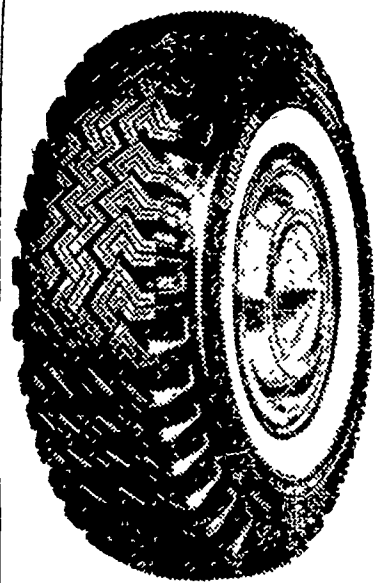
Burling's New Hampshires. Carefully selected stock.

When you're ready to order, pick up the phone and call Oxford 286 collect.

### Bites through snow that's HUB-CAP DEEP!



**3-T SUBURBANITE by GOODYEAR**



- Lowest price in years!
- Highest trades!
- Choose black or white sidewalls!

**NO DOWN PAYMENT WHEN YOU TRADE IN YOUR OLD TIRES**

**FREE!**

### Windshield Scraper

Sturdy, long handled scraper that quickly removes snow and ice. Fits your glove compartment. NOTHING TO BUY! JUST ASK!

Only \$1.25 weekly gets rid of skid!

### LEBZELTER'S

237 - 241 N. Queen Street, Lancaster, Pa.  
Phone EX 7-5161