

Co. Guernsey Breeders Elect

Paul Ankrum, Peach Bottom, was elected president of the Lancaster County Guernsey Breeders Association at the last meeting of the board of directors.

Earlier this month, Ankrum was elected to the board of directors at the annual banquet of the association held in Quarryville. He previously had served two terms as vice president of the organization.

Also elected at the meeting were Rohrer Witmer, of Willow Street, vice president; and Harold Herr, Kirkwood, secretary-treasurer.

Witmer was also appointed chairman of the association's annual meeting committee. Melvin Stoltzfus, Ronks R1, retiring president was made chairman of the Field day committee.

Heading the group to plan the annual tour was Hervey Ferguson, Kirkwood, and Ellis Denlinger, Gordonville R1, was reappointed as DHIA representative.

SEES FARM TREND

Dean Lyman E. Jackson of the School of Agriculture at the Pennsylvania State University sees livestock and poultry numbers and feeding rates increasing during 1960. However, the rate of expansion has slowed down. There will be more than enough grain and high-protein feedstuffs.

Marbling in the loin muscle seems to be a good indicator of pork quality, U. S. Department of Agriculture food specialists have found.

Common table salt may corrode and tarnish silver, so take special care of spoons used to serve salty nuts and candy.

CASHMAN Hi-Cash PRODUCTION PULLETS

When clouds are looking darkest,

And egg prices declining,
A flock of HI-CASH pullets,

Bring back the silver lining.

For free literature and random sample facts

CALL

Weaver's Hatchery

LITITZ #4, PA.

Phone Ephrata RE 3-0885

E-town Boy Is On State Stock Team

Gerald H. Hess of Elizabethtown was one of the members of the Livestock Judging team from The Pennsylvania State University that won its second championship this season during the Eastern National Livestock Show held recently at Timonium, Md., winning out over 11 other Eastern universities and colleges. Earlier the team placed first at the Eastern States Exposition.

Penn State's team ranked first in judging hogs at the Eastern National, third in sheep, and fourth in judging beef. Second highest individual at Timonium was Louis M. Colbin of Schellsburg (Colvin was high individual at the Eastern States event) Tenth highest individual at Timonium was Donald P. Fowler of Danville.

Colvin was second highest individual in judging beef, sixth in sheep, and ninth on hogs. Don Fowler placed seventh on beef and eighth on sheep. Gerald Hess and Robert L. Kimble of Roaring Branch tied for seventh on hogs.

The team included David H. Fowler of Danville. Alternates were Jay M. Espen-shade of Elizabethtown, Ray S. Lehr of York, and Clair W. Zerby of Spring Mills. The team competes next on November 28 during the International Livestock Exposition in Chicago.

FARM VALUES RISE

Pennsylvania farmland values continue to rise, 7 per cent in the past year. James Becker, Penn State extension farm management specialist, says this rise is slightly higher than the national average.

Grass should go into the winter cut at normal height to avoid matting down and possible snow mold injury, points out John Harper, Penn State extension agronomist.

magnificent

Magnavox
stereophonic
high fidelity



20 Watts

6 Speakers

diamond stylus

record storage space

FM/AM radio optional - extra

The Stereorama

in mahogany

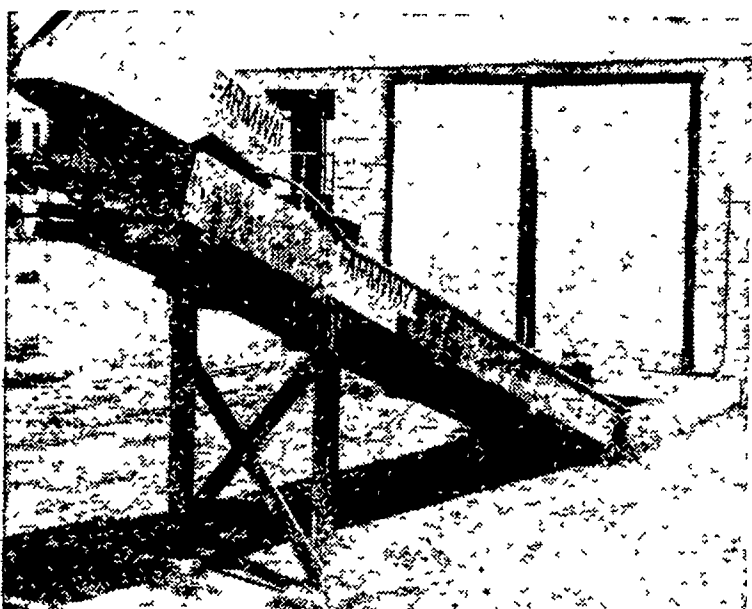
\$299.50

Glick's Audio Sales

2320 HOBSON ROAD,
SMOKETOWN, PA.

EXpress 3-7242

Open weekdays 9-5;
Tues. & Fri. 9-9



A new line of New Holland-Farmway barn cleaners has been added by L. H. Brubaker of 350 Strasburg Pike, local New Holland Dealer.

The barn cleaners can be installed in old or new barns, L. H. Brubaker said, and they are available in various models for use in all size barns.

Mr. Brubaker said the barn cleaners were added to his line of farm equipment following the recent purchase of the Farmway Company, Manawa, Wisc., by New Holland. Anyone interested in more information, call or stop at L. H. Brubaker's, 350 Strasburg Pike, Lancaster or call EX 3-7607 or OV 7-6002.

SERVICE AS NEAR AS YOUR PHONE

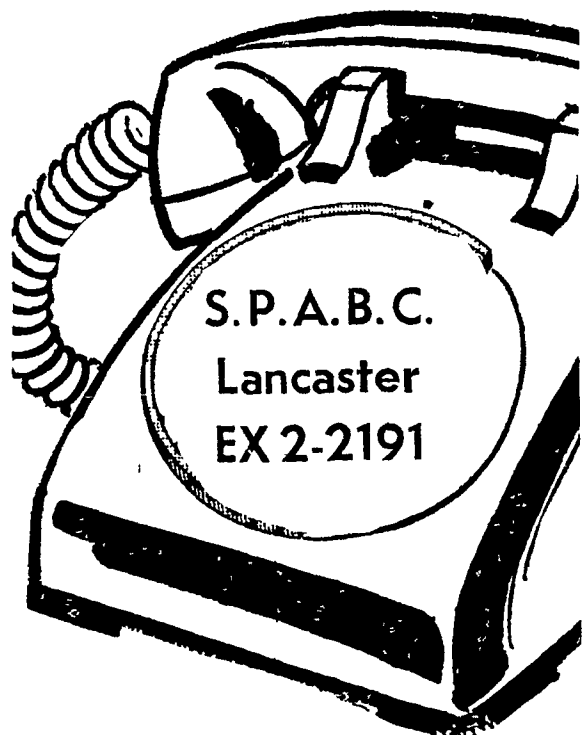
Your Cooperative Offers You—

Better Breeding

Safe-Convenient Service

At Less Cost

Our service is handy...



Just Phone Your Nearest Calling Station

WOLGEMUTH BROS., INC.
FLORIN, PENNA.
Mount Joy Oldfield 3-2411

JOHN HESS II FEED MILL
INTERCOURSE, PENNA.
Intercourse Southfield 8-3301

BONNYMEAD FARMERS EXCHANGE, INC.

Hummelstown, Penna
Hummelstown Locust 6-2521

MANHEM FARM BUREAU
MANHEIM, PENNA.
Manheim Mohawk 5-2467

JOHN L. ZUG & SON, INC.
RICHLAND, PENNA.
Myerstown Union 6-4323

WORLEY LUMBER COMPANY
WEST LAWN, PENNA.
Sinking Springs Orchard 8 8038 or
Reading Franklin 3-2123

FARMERS MUTUAL INSURANCE CO.
ROBESONIA, PENNA.
Womelsdorf Luther 9-4265

MARTIN'S FEED MILL
R 3, EPHRATA, PENNA
Ephrata Republic 3-2540 or 3 2908

LEBANON COUNTY FARM BUREAU
LEBANON, PENNA.
Lebanon Crestview 3-2621

LANCASTER COUNTY FARM BUREAU
QUARRYVILLE, PENNA
Quarryville Sterling 6-2126

Southeastern Penna.
Artificial Breeding Coop.

P.O. Box 254, Lancaster, Penna.

Phone EX 2-2191



PINE WOOD SHAVINGS

OR KILN DRIED MIXED - FINE - MEDIUM
FOR POULTRY AND LIVESTOCK BEDDING

CALL EXpress 4-5412

CONVENIENT — SANITARY — SERVICEABLE

Deliveries Made Over Two Tons

Trailer Load Prices, Bagged or Bulk

HAROLD B. ZOOK

220 Lampeter Road

Lancaster, Pa.

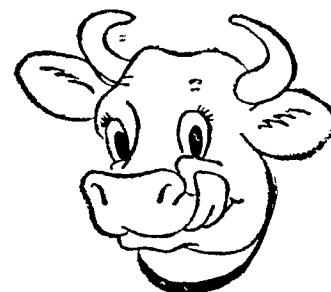
COWS
LOVE
IT!

WAYNE
SWEET
BULKY
FEED

HELPS IMPROVE DAIRY RATINGS

Add variety and bulk to your dairy rations and improve palatability with WAYNE SWEET BULKY.

Rich in beet pulp, molasses and minerals, WAYNE SWEET BULKY greatly improves rations fed to dry, fresh and milking cows. Good for growing heifers, too!



See us today for
WAYNE SWEET BULKY FEED



H. M. STAUFFER & SON'S, Inc.

Witmer - Ronks - Leola, Pa.

MILLERSVILLE SUPPLY CO.

Millersville, Pa.

ROSS C. ULRICH, JR.

R.D. 2, Peach Bottom, Pa.

ABERDEEN MILLS

R.D. 2, Elizabethtown, Pa.

SUNSHINE FARM SUPPLY

Lititz, Pa.

ROHRER'S MILL

R. D. 1, Ronks, Pa.

LIME VALLEY MILLS

R.D. 1, Willow Street, Pa.