

## At Lancaster Yards Slaughter Quality Good

James E. O'Hara,  
In Charge, Market News Branch

**CATTLE:** This week the receipts will fall some 1400 head short of last week's 7,379 head count. The supply was made up of 25 per cent slaughter steers and 65 per cent stockers and feeders & about 150 head of show steers. Trading was moderately active through most of the week.

The quality of slaughter steers continues good. Compared with last week's close, slaughter steers held steady to 25 lower. Cows were 25 to 50 off. Bulls sold at steady rates.

Stockers and feeders were steady to weak. The bulk of the Choice slaughter steers weighing up to 1300 lbs. brought 28.00-29.00 with a few loads and lots Choice with a small Prime end scaling 1028-1256 lbs. sold at 29.25-29.50. Good to low choice 25.25-28.25. Several loads and lots high Good & Choice grade steers 1200-1350 lbs. made 27.00-27.75.

Standard and low Good 23.00-25.25 with some Good

grade grass fed steers down to 23.50. Lot Good grade heifers weighing 811 lbs. commanded 25.00. Cutter and Utility cows ranged from 15.00 to 17.25 with Commercial cows selling up to 18.25, while Canners and low Cutters made 12.50-14.75.

Utility and Commercial bulls brought 20-25.00 with Good grade fed bulls up to 27.00.

Good and Choice 800-1050 lb. feeder steers commanded 25.50-28.00 and Medium and Good sold at 23.50-26.50, lot Medium 1220 lbs. at 22.50 & several lots Common down to 22.00. Good and Choice 550-800 lb. stock steers made 26.50-30.50, while Medium and Good sold at 25.25-27.50. Good grade stock calves 29.00-30.00 with those at 33.00 carrying a small end choice Medium stock calves sold down to 25.50.

**CALVES:** In the calf division this week about 925 head of vealers brought steady prices in active trading. Last week's receipts totaled 773 head. Good and Choice vealers made 28.00-35.00 and Choice and Prime brought

## Chicago Cattle

### Prices Steady To 50c Lower

**WEEKLY REVIEW**  
**CATTLE**—Market supplies about 5 per cent less than last week and about 10 per cent under the same year-ago week. Fully 70 per cent of

35.00-40 with a few Prime commanding 41.00. Standard and Low Good ranged from 22.00-28.00 and Utilities sold down to 18.00.

**HOGS:** In the Hog Division this week the receipts fell about 200 head short of last week's 1545 head count. Trading was moderately active as barrows, gilts and sows held steady. U. S. 1-3 grade 190-230 lb. barrows and gilts managed 14.25-15.25 with a few lots No. 3's selling down to 14.00. Hogs more uniform for weight and grade including 1-2 grade, 190-230 lbs. at 15.50-16.50 mostly 16. down. Several lots 246-286 lb. butchers brought 13.50-14.00. 300-600 lb. sows, paid 8.00-12.00.

**SHEEP:** Slaughter lambs sold at steady rates on about 425 head compared with last week's 601 head count. Trading was active. Medium and

(Turn to page 9)

## New Holland

### Steer Market is Brisk

The steer market at New Holland week on all kinds heavy short fed steers were very slow and The cow market was to 50 higher, and calves were steady.

Receipts at the 5 sale were 856 390 calves. Prime butcher \$29-29.85; choice 2 - 28-28; plain to me 26; heavy short fed. Good butcher \$23.50-25; pl to me 23.50.

Good bulls - \$22.50 pl to med - \$22.50. Cows - 22.25. Stockers and feeders scarce, steady to strong.

Around 20 loads high choice to mostly prime 1150-1350 lb. slaughter steers 28.75-29.00, eight loads 29.00. Bulk choice and mixed choice and prime steers under 1400 lbs. 26.25-28.50, several loads prime and mixed choice and prime 1435-1525 lb weights 26.50-28.50, few loads mixed good and choice 975 lb. steers 26.25-26.50.

Utility and commercial cows 14.25-18.00. Few standard cows sold up to 20.00, canners and cutters 12.00-15.25, some heavy cutters 15.50. Utility and commercial bulls 19.00-21.50, few good heavy fat bulls 17.50-18.50.

Few good and choice vealers 32.00-33.00. Most standard and good grades 25.00-31.00, cull and utility vealers largely 14.00-24.00. Three loads mixed good and choice 385-450 lb. stock steer calves 31.75 and 32.00. Two loads comparable grade 450 and 463 lb. heifer calves 27.00 and 27.50. Load choice 1100 lb. weights included at 25.50.

Some medium 850 22.75-23.50, two 1 mon and medium weights 21.25, some lb. holstein stockers

**FARMERS!**  
USE  
**READY-MIXED CONCRETE**



## All-Weather Paved Manure Lot

- 1. Labor Saving**  
Animals are easier to clean than to keep clean. It is easier to work on a concrete area.
- 2. Savings in Feed**  
Costly feed is not tramped into the mud and lost. Animals get all the feed.
- 3. Manure Is Saved**  
This valuable fertilizer is easily recovered and carried to the fields where it can produce for you.

**nh NEW HOLLAND CONCRETE PRODUCTS**  
New Holland, Pa. • ELgin 4-2114

# Save on Twine

— AT —  
**Farm Bureau**



**MAXIMUM Early Order DISCOUNT during NOVEMBER**

- '4' GREAT TWINES**
- Unico Premium
  - Unico Extra Length
  - Unico Red Label
  - Unico Premium Binder Twine

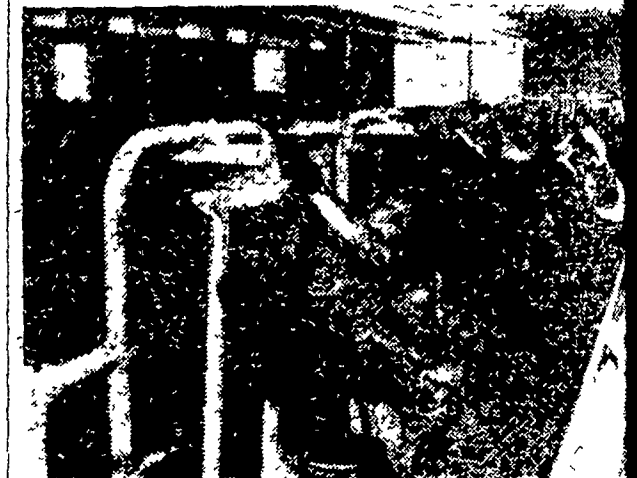
Don't delay . . . See Farm Bureau NOW for the best in Twine Values or Call . . .

Lancaster EX 4-0541    Manheim MOhawk 5-2466    New Holland ELgin 4-2146    Quarryville STerling 6-2126



**SETTING THE PACE IN SERVICE TO AGRICULTURE 1934-1959**  
OWNED and CONTROLLED by Lancaster County FARMERS

## FOUR WAYS TO HELP SWITCH TO BARN FEED without loss in milk production



- 1** During the last few weeks on pasture, grad hay, silage and grain feeding up to the full level. Cows that are eating the same kind of feed before stabling as will be fed after major change.
- 2** At time of stabling reduce grain feeding 4 feed 8 lbs. of Be-Co-Lass per day for five gradually reduce the Be-Co-Lass and restocking. The laxative effect of the Be-Co-Lass is in preventing constipation.
- 3** At time of stabling give cows extra salt and have ready access to water.
- 4** Turn cows out several hours each day for first week following stabling.

The Beacon dairy program is designed to fit the individual herds and individual farms. Beacon Dairy Ration is recommended for herds averaging over 400 lbs. butterfat Dairy Rations for herds averaging up to 400 lbs.

We'd like to tell you more about these feeds and help your herd make more milk in the barn. Just drop us and we'll be glad to give you more information.

## The Beacon Milling Company

A Division of Spencer Kellogg & Sons, Inc. PHILADELPHIA & CARLISLE STS., YORK, PA.

Telephone: York 8-2341

# BEACON