

Nest Cushions Improved By Poultry Researchers

A new fibrous nest cushion for hens, developed at the Pennsylvania State University, is proving popular with laying flocks, reports Glenn O. Bressler of the Agricultural Experiment Station at Penn State.

Dr. Bressler and associates find the nest cushion keeps eggs cleaner than litter-type nests and reduces egg breakage. The eggs roll out the back into a collecting tray,

thus reducing labor. The nest cushion egg collection, Bressler says.

At present it is being used in the Penn State Solar house in conjunction with a mechanical egg collector. It is also being compared with conventional litter nests and hand collection in another laying cushion works well with con-

ventional nests or for mechanical house. In preliminary studies 85 to 90 per cent of the eggs laid were sufficiently clean to carton directly. Tests showed practically no difference in amount of floor eggs compared with litter-type nests.

When soiled by droppings, these new nest cushions can be brushed clean while dry or can be washed with a hose and water. The cushion will last for several years and shows promise of nearly eliminating cracked and broken eggs.

The roll-away nest cushion

for hens was developed by manufacturing firm in Dr. Bressler of Penn State's poultry husbandry department with the help of several years.

PINE WOOD SHAVINGS OR KILN DRIED MIXED - FINE - MEDIUM FOR POULTRY AND LIVESTOCK BEDDING

CALL EXpress 4-5412
CONVENIENT — SANITARY — SERVICEABLE
Deliveries Made Over Two Tons
Trailer Load Prices, Bagged or Bulk
HAROLD B. ZOOK
220 Lampeter Road Lancaster,

USDA to Survey Grain Storage Cost; Facilities

The U. S. Department of Agriculture announced that a team of about 100 specially trained enumerators today began a comprehensive field survey and study of current commercial grain storage costs.

Preparations for the field survey have been under way in the Department for a year. With surplus and storage problems emphasized by all-time record current crop production, active discussion of plans to secure more complete information on storage costs, and to review storage operations, were begun in October 1958.

During the survey, which is expected to be completed late this year, detailed questionnaires will be filled out through personal interviews with the management of more than 530 country and terminal warehouse facilities.

Commenting on the cost survey, Acting Secretary of Agriculture True D. Morse said, "As government-owned surpluses of wheat and other commodities have built up to record levels, we have been increasingly concerned about storage costs. The Commodity Credit Corporation is currently holding more than 2 million bushels of grain in commercial storage. The bill for storage of these commodities — not counting transportation or interest costs, or the maintenance of CCC's own bins and maritime ship facilities—is running well over a million dollars a day.

"This situation, which has been developing for a long time as a result of required price support operations, reached proportions a year ago which called for study and reappraisal of our whole storage problem. As a result, last fall we started active discussion and planning for necessary steps.

"It was apparent early in this period that we needed more accurate information on storage costs. With rising storage costs a major problem, it was essential to establish the basic facts.

"The information determined through the survey will make it possible to provide detailed and factual answers to current questions. Reflecting increased public interest, various congressional committees within recent weeks have started to check into storage operations. Because we began our preparations a year ago, the results of the cost survey will be available this winter to assist the committees in their studies."

The total number of sheep and lambs is expected to increase about 2% during the feed year ending September 30, 1960. Improved forage conditions and a continuing increase in farm flock size in the non-range states is expected to result in an increase in the number of lambs marketed. The number of feeder lambs to be fattened is expected to increase slightly.

THE RECORD SPEAKS FOR ITSELF!

Here Is Proof It Pays To Combine

EARLY BIRD FEEDS

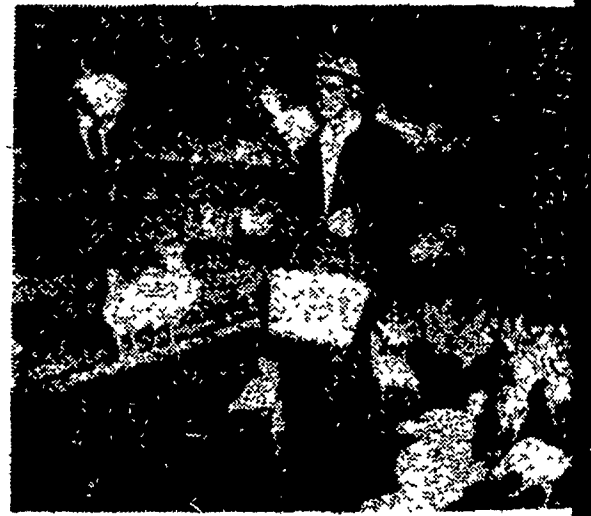
and

GOOD MANAGEMENT

Look at this Record of the Birds Owned by Mr. Luke A. Brubaker of R. D. 3, Lancaster — AN EARLY BIRD FEEDER.

FLOCK NO. 1 (First 3 mos. on range) Percent of Lay Per Hen Housed		FLOCK NO. 2 Percent of Lay Per Hen Housed	
1958		1958	
July	75	Nov.	70
Aug.	75	Dec.	86
Sept.	77	1959	
Oct.	79	Jan.	87
Nov.	77	Feb.	85
Dec.	73	Mar.	83
1959		Apr.	82
Jan.	71	May	78
Feb.	69	June	75
Mar.	66	July	71
Apr.	64	Aug.	67
May	63	Sept.	62
June	58	Oct.	58
TOTAL 258		TOTAL 275.2	
No. housed 480		Feed used 3.9 lbs. per dozen eggs	
No. at finish 451		No. housed 480	
(No conversion record kept)		No. at finish 456	

FLOCK NO. 3 Percent of Lay Per Hen Housed	
1959	
July	78
August	80
September	84
October	77
480 birds housed	
Mortality to date - 6 birds	
Feed conversion to date avg. 3.7 lbs.	



Mr. Brubaker gathers all eggs on schedule is one key to quality.



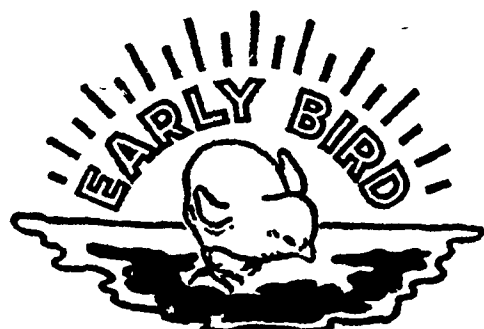
Bulk feeding installation saves labor and costs.

Needless to say we are pleased with this flock's performance and

WHAT ABOUT MR. BRUBAKER?

He states, "We are really pleased with Early Bird's program. They take a real interest in our poultry project and their service is wonderful."

For the finest poultry service anywhere, contact your Miller & Bushong Representative call Lancaster EXpress 2-2145



Miller & Bushong, Inc.

ROHRERSTOWN, PA. Ph. Lancaster EXpress 2-2145

Manufacturers of Poultry and Live Stock Feed Since 1911