

# Eggs Down Fewer Head

and supplies were the Lancaster poul- this week and sel- cautious, holding of the 46 lots offered. of 71,975 broil- at prices ranging to 17.9 with 45% at 15.7 and only sales over 17c. of 8,765 capettes prices of 23.4 to 27.3 containing 3,440 leghorn fowl year- light 8.9 to 9.2. is the complete sale with seller, in parenthesis, and breed, age in days, buyer and

CODE: WV-White W Mts - White LFY - Leghorn C - Cockrels, Cap - Capettes, White Heavy Fowl. Co Farm Bureau Herr) 2900 WV-C Daniel K. Good, S Martin 1500 W- 14-2, NO SALE 21- Same, 1400 WV-C- NO SALE, 21.7 Raymond H. Weaver, Cap, 15, Roy E. J. Arthur Wen- F, 18 Mo., Carl B.

Risser, 9.0. 6. Roy Heckenluber, 1800 L-F-Y, Victor Koser Co. Inc 9.2; 7. Morgantown Feed and Grain, (Clair Youndt) 1100 L-F, Withdrawn prior to sale, 8 Robert W. Keller, 960 W-HF, 14 Mo, NO SALE, 14.1 bid; 9. Richard Winters, 2000 WV-Cap, 13, NO SALE, 19.5 bid; 10. Richard Musselman, 1850 WV, 9-6, Daniel K. Good, 15.6; 11. Sam Z. Musselman, 3900 WV, 9-6, Dan K. Good, 15.6; 12. Ira B. Nissley (Allan Schantz) 5600 W Mts, 9, H. W. Longacre, Inc 15.7; 13. Morgantown Feed & Grain, (Oliver S Mast), 3000 WV, 10-1, Linn Poultry, 17.2; 14. Same, 4600 WV, 10.1, Roy E. Ream, 16.1; 15. Same, 3200 WV, 10-2, John N. Thomas, 16.1;

16. Edgar M. Martin, 2000 WV, 9-6, NO SALE, 15.2 bid 17. Same, 2975 WV, 9-6, NO SALE, 15.6 bid; 18. H. M. Stauffer & Sons, (S. M. Fisher) 3500 WV, 9-4, NO SALE, 15.1 bid; 19. Same, (Emanuel Flaud) 2500 WV, 9-4, W. C. Mellinger & Son, 15.7;

20. Miller & Bushong, (Elmer Garber), 6900 WV, 9-2, Harry H. Weaver, Jr., 15.9, 21. Same, 5100 WV, 9, Harry H. Weaver Jr. 15.9; 22. Same (Emmett P. Shreffle, 6000 WV, 9-2, NO SALE, 15.6 bid; 23. Same, (Robert Kauffman), 6000 WV, 9-2, NO SALE, 15.0 bid; 24. Same, 4000 WV, 9-2, NO SALE, 15.4 bid; 25. Same, NO SALE, 15.0 bid.

26. M&B (Luther R. Beaver) 6300 WV, 9-2, Penna. Dutch, 15.7; 27. Same, 28. Same; 29. Same, 5100 WV, 9-2, Penna. Dutch, 15.7; 30. Barry Andes 475 WVPPCap 15, Roy E. Ream, 27.3; 31. Albert Schock, 200 WV-C-Cap, 17, Carl B. Risser, 25.4; 32. Same, 250 WV-P Cap, 17, Carl B. Risser, 25.4; 33. Jacob C. Herr, 740 WV-C-Cap, 14-2, C. F. Manbeck, Inc, 24-

# Delmarva - Georgia

## Demand Down Offering Light

Delmarva closed this week with 578,500 head selling for 14.90 to 16.50. Offerings continue to be light and demand is reduced. Estimated slaughter for the week end 531,000 head compared to the 550,000 head last week end.

The broiler-feed ratio in Delmarva for the week ending Oct. 23 was 3.7. This is an increase of two points from last week and is a reflection of higher prices received last week. Broilers sold for 16.49 and mash cost \$88.94 per ton.

Offerings in Georgia were not excessive but were fully ample for the demand. Georgia closed with 1,174,000 head going at prices ranging from 13.5 to 15.0 with most going at 14. Estimated slaughter for the week end is 1,515,000 as compared to 1,325,000 last week.

0; 34. Charles Shetzer, 500 L. F., Carl B. Risser, 8.9; 35. Elias Frey 525 WV, 10-2, John Rettinger, 17.9;

36. M&B, (Ben Brubaker), 600 WV-P-Cap, 13-2, Daniel K. Good, 23.5; 37. Same, 1,100 WV-P-Cap, 13-2, W. C. Mellinger & Son, 23.4; 38. Same, 600 WV-C-Cap, 13-2, W. C. Mellinger & Son, 24.7; 39. Same, 1100 WV-C-Cap, 13-2, W. C. Mellinger & Son, 24.7; 40. Wm. C. Schultz, 6,000 WV, 9-6, Meader's Poultry, 16.0;

41. Same, 6400 WV, 9-6, NO SALE, 15.6 bid; 42. Clarence Hilsher, 4800 WV, 9-2, Dan K. Good, 15.6; 43. Clyde Hunt, 700 L-F 20 Mo., Carl B. Risser, 8.9; 44. George Balthaser, 3400 W. Mts, 10, NO SALE, 16.0 bid; 45. Same 3200 W Mts., 10, NO SALE, 16.1 bid; 46. Same, 2400 W Mts. 10, NO SALE, 15.0 bid; 47. Same, 16.0 bid.

# Weekly New York Egg Mkt.

From Monday, October 26th to Friday, October 30th

	Mon.	Tues.	Wed.	Thurs.	Fri.
<b>Nearby Whites</b>					
Ext. Fcy.					
Hywts	39½-	39½-	39½-	40½-	41½-
Med.	25 -	22½-23	23½-	24 -	24½-
Pullets	20½-	18 -18½	18½-	19 -	20 -
P-wees	16 -17	16 -	16 -	16 -	17 -

<b>Nearby Browns</b>					
Ext. Fcy.					
Hywts	41 -	41 -	41 -	41 -	41 -
Med	31½-	29½-	29½-	29½-	29½-
Pullets	24 -	23 -	25 -	25 -	25 -
P-wees	16 -17	16 -	16 -	16 -	17 -

<b>Midwestern Mixed</b>					
Ext. Fcy.					
Hywts	37 -	36 -	36 -	36 -	37½-
Med.	22½-23	22 -	22 -	23 -	23 -23½
Pullets	19½-	18 -18½	18 -18½	18 -18½	18½-19½
Slds	32 -	31 -	31 -	31 -	31 -32
Checks	-23 -	23 -	23 -	23 -	23 -

<b>Midwestern Browns</b>					
Ext. Fancy					
Hywts	38 -	38 -	38 -	38 -	39 -

<b>Midwestern Whites</b>					
Ext. Fcy.					
Hywts	37½-38	36¾-37	37 -	38 -	39 -
Med.	23½-	22½-	22½-	23 -	23 -23½
Pullets	20½-	18 -18½	18 -18½	18 -18½	18½-19½

TREND—Fancy top grades generally well cleared, particularly whites. A much better call for mediums also noted.

Copyrighted 1958 By Uner-Barry Co.

## Fluid Milk Demand Said Good To Fair

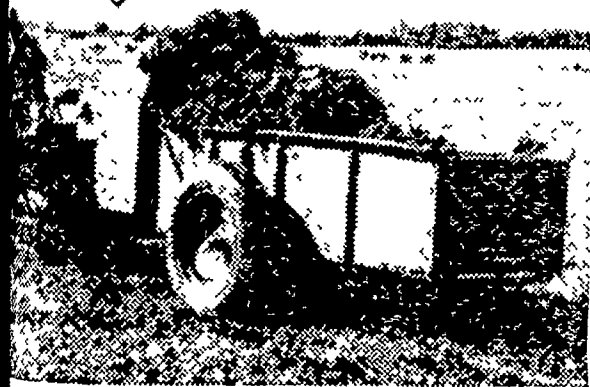
Fluid milk production held steady to slightly lighter. Bottling demand was reported unchanged to slightly lighter at Pa. good at Atlanta, fair to good at Boston, and irregular at N. Y. Surpluses over class needs were reported at Boston and Phila. Prices for bottling quality milk at New York was \$5.67 to 5.90 with most at 5.80 and 5.90 per 40 quart unit.

Diets of families with homemakers 60 years old and older rate lower nutrition-wise than those with younger homemakers, reports Louise W. Hamilton, extension nutrition specialist, the Pennsylvania State University.

A United States Department of Agriculture report indicates that diets of families with homemakers more than 60 years old are lower in protein, iron, niacin, and thiamine than diets of families with homemakers under 30. Meat, poultry, fish, and grain foods supply these nutrients.

**DANS**  
 FARM PURPOSE  
 THE FARMER'S  
 WAY  
 LANCASTER  
 PRODUCTION  
 CREDIT ASSN  
 11 W. Roseville Rd  
 Lancaster, Pa.  
 Ph. Lanc. EX 3-3821

**EASY-LOAD**  
**FINE-SHRED**  
**BLANKET-SPREAD**



Nothing handles manure like an Allis-Chalmers No. 110 Manure Spreader. Don't buy any spreader until you've seen for yourself how easy it loads—from the rear sides, with no arches or beaters to block the way. See what a good job of shredding and even spreading it does. Stop at our store, or call us, for full information on this spreader.

- WESTERN National Farm and Home Hour, Saturdays, NBC
- ALLIS-CHALMERS** SALES AND SERVICE
- Be Sure to Ask Us About Details of the Farmers Trip to Bermuda
- Brubaker Nissley Farm Service, Washington Boro, Pa.
  - Snavelys Farm Service, New Holland, Pa.
  - Brubaker N. G. Myers & Son, Rheems, Pa.
  - Grumelli Farm Serv. R. S. Weaver, Quarryville, Pa.

**Stanley H. Deiter**  
 Auctioneer and Appraiser  
**LAMPETER**  
 Ph. Lancaster EX 4-1738

Try a Classified Ad.

# FAMOUS NAMES AMONG DAIRYMEN



**MILK MIZER**—MILK REPLACER FOR CALVES. Produces healthy, fast growing calves and is cheaper to feed than whole milk.

**TWIN MIX**—CALF GRAIN. An economical formula feed of proven quality for building healthy, strong bodied calves.

**RECORD FITTING FEED**—A TOP CONDITIONER For young stock and dry cattle.

**CALVING FEED**—A FEED FOR THE CRITICAL REQUIREMENTS OF CALVING.

**32% RECORD DAIRY SUPPLEMENT**—A MILKING SUPPLEMENT. Containing top quality ingredients that provide the highest nutritional levels.

CALL YOUR DEALER AND TRY THESE FEEDS TO SEE THE RESULTS OF

**WIRTHMORE** Research & Service

**LeROY M. SENSENIG**  
 HINKLETOWN Ph. Ephrata RE 3-2009

**CUSTOM BULK SPREADING**  
**SMUCKER BROS.**  
 BIRD-IN-HAND  
 Ph. Intercourse SO 8-3610

**WHY MAKE HAY?**  
 when **HARVESTORE**  
**HAYLAGE**  
 can be the only forage you need



Haylage is field-wilted 40-60% moisture forage ... up to 46% higher in protein, almost a complete ration in itself. Cuts field losses ... eliminates hard-to-make hay, water-logged silage.

SEE US for the labor-saving, money-making details  
**KNIPMEYER, Inc.**  
 Harvestore Sales & Service  
 NEW HOLLAND, PENNA.  
 Phone ELgin 4-2351