

ers Begin
from page 1)

atoes are rapidly
to storage. In some
harvest is so nearly
as to create a tem-
at storage termi-
resting of pump-
squash has begun
crop reported good
heavy.
and late pears are
and the crop re-
service recommends
now for winter
storage is available.
crops will be left
ound until after the
ing frost.

International Exposition Merges Dairy, Livestock Shows

Merger of the 60th International Live Stock Exposition with what would be the 7th International Dairy Show will bring the five dairy breeds into competition and display at the world's largest livestock event for the first time.

The union combines two of the country's greatest farm animal shows — each eminent in its class — into one huge exhibition. It will be

held November 27 to December 5 in the International Amphitheatre and a large area of the Chicago Stock Yards.

Past International Dairy Shows, formerly held in October, drew entries of up to 2,000 purebred dairy cattle; and the International Stock Show entry annually comprises 10,000, and more, animals representing the tops of the meat-making breeds.

Officials of the combined exposition point out the merger is possible only because of the recent vastly enlarged facilities of the International Amphitheatre. Now double its original size, the Amphitheatre encompasses an area of 13 acres.

Its central arena, seating 8,000, is air-conditioned. It is here that all cattle breed judging — beef and dairy — will be done each day, after which the arena will become the stage for the famous International Horse Shows.

Judging of the International steer show will be done Nov. 26-28.

The dairy breeds will be on view to the public from December 1 to 5.

The individual obsessed with an idea is often a nuisance to his friends.

LOANS

FOR ANY FARM PURPOSE
MADE THE FARMER'S
WAY

LANCASTER
PRODUCTION
CREDIT ASS'N

411 W. Roseville Rd
Lancaster, Pa.
Ph. Lanc. EX 3-3921

Oak Wilt Controls Difficult Says Dr. Fergus of U.S.D.A.

Oak wilt disease kills oaks by shutting off the flow of water from the roots to the leaves. Because of the nature of the disease, says C. L. Fergus, plant pathologist, prospects of successful treatment of wilt-diseased trees are slim.

Dr. Fergus and associates at the Penna. Agricultural Experiment Station, University Park, have cooperated in recent years with staff members of the state department of Agriculture and Forests and Waters in eradication of wilt-diseased oak trees.

Much has been learned about the nature of oak wilt but no control measure is known as yet except outright destruction of the diseased trees to prevent further spread.

Injection of chemicals into

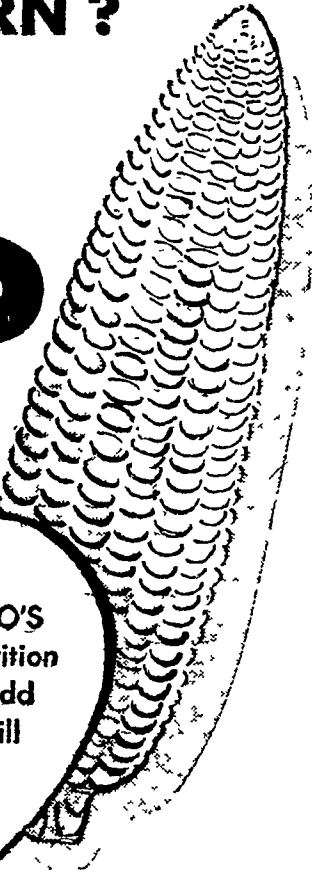
healthy oaks is not difficult, Dr. Fergus and associates have found. Chemicals have been applied by means of waterproof paper collars holding solutions over incisions in the bark, by inverted bottles and siphons into roots and branches, and by other methods. Although upward movement of chemicals was rapid, and extensive in healthy oaks, particularly at bud break in spring, movement into wilt-diseased trees was limited and unpredictable.

Since chemicals cannot be induced to flow through oaks having disease, curative treatment seems impossible, Dr. Fergus points out. At the same time, root grafts up to 50 feet from infected trees have been found to pass the disease on to other oaks.

ON CORN?

ish In On
ew Super

MA-CO
POULTRY
LENDERS



THE HEART OF MA-CO'S
amous High Energy Nutrition
in concentrated form. Add
Your Own Grains, it will

**SAVE YOU
MONEY**

RAYBILL & SON
Bareville

B. G. MELLINGER & SON
Willow Street, R. D. 1

B. LANDIS
By Rd., Lancaster

S. O. TRUPE
East Earl, R. D. 1

Manufacturers of High Efficiency Poultry Rations

CUSTOM BULK SPREADING

Dealers in

Davco Granulated Fertilizer

- Super Gro
- Rock Phosphate
- Green Sand
- Hybrotite

BAGS OR BULK

Prompt and Reliable Service
For your Fertilizer Needs Call

SMUCKER BROS.

BIRD-IN-HAND, PA.

Ph. Intercourse SO 8-3610

**YOU PICK THE BEST
when you
PICK
with
FORD!**



ORD MOUNTED CORN PICKERS!

Save 2 to 5 bushels more corn per acre while you pick up to 20 acres per day with Ford's popular 2 row mounted corn picker! This proved performance is made possible by Ford's effective use of outstanding corn-saving features . . . efficient pick-up of down and leaning stalks . . . exclusive side-snap snapping rolls . . . corn-saver pan . . . big capacity elevators . . . clean-husking, gentle-acting, husking beds . . . and many more. Mounted 1-row models with similar corn-saving features are also available.

Stop in and let us show you these corn-saving features.

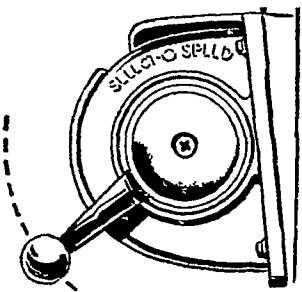
SAUDER BROS.

NEW HOLLAND, PA.

PHONE EL 4-8721

FARM BETTER
WITH

FORD



SELECT-O-SPEED

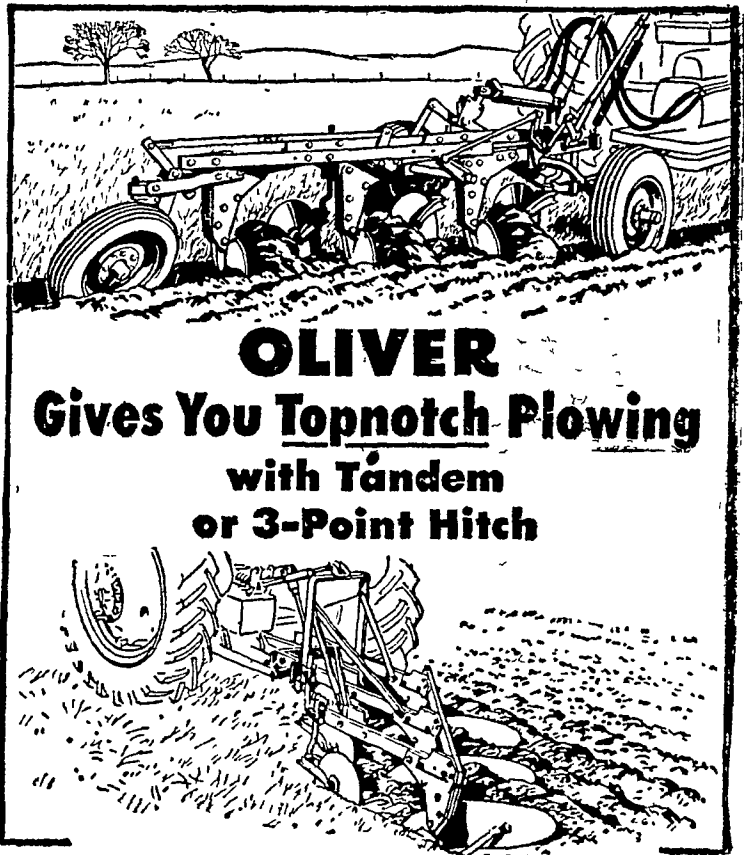
Shift on the go. No clutching. No stopping to shift. A snap of the wrist selects your choice of 10 speeds forward, 2 reverse. Instantly match engine power to field conditions. Engage or disengage PTO while on the move. See it today!

Ask Us For

A No-Cost,

No-Obligation,

Demonstration



OLIVER Gives You Topnotch Plowing with Tandem or 3-Point Hitch

You avoid plugging delays, do a better covering job, plow at top speed with an Oliver. Here are extra big passageways for trash—greater beam clearance, more furrow-turning space between bottoms.

No more re hitching or recoupling—either. Oliver plows have spring-trip beams that permit the bottoms to swing back, ride over obstructions without damage. To reset, just back the tractor. What a time- and share-saver!

And, both these plows—the pull-type No. 4240 and the 3-point hitch No. 3241—are convertible. It's easy to add an extra bottom to a 2-bottom unit to match your power, and spring and fall field conditions.

Come in and see a really modern plow. Let us prove that an Oliver plows better at lower cost.



G. E. Busler
Peach Bottom, Pa.

Chas. J. McComsey
& Sons
Hickory Hill, Pa.

Farmersville
Equipment Co.
Ephrata, R.D. 2

N. G. Hershey & Son
Manheim, R. D. 1

J. B. Lapp
Atglen, Pa.