

Broilers Up To 18.08

Broiler average gained a cent Thursday with average of 18.08 cents per lb., including 111,500 lbs. in a 174 - 19.8 range. Offerings were 51 lots with 121,210 head. There were 13 lots with 8,600 capettes at 1400 WV-P-Cap, 14-2, Sweigart, 24.7. One lot with 640 fowl at 9.4. Two lots with 470 heavy fowl at 13.8. Third of 37,200 broilers averaged 18.56, on an average of 19.8 range. Selling is the complete sale, with seller, in parentheses, breed name, age in weeks, buyer and price.

CODE. WV - white cross; WXC - white cross; WRF - white rock; IRW - indian river; Cap - capettes; C - C pullets; L-F-Y - L-F-Y yearlings

21. Lester S. Wenger, 400 WV-Cap, 14, Ream, 27.2; 22. Raymond H. Weaver, 2,000 CWR, 9-5, Dan Good, 17.8; 23. Eastern States (H. Raymond Charles), 3,000 CWR, 9-2, Meader's 18.2; 24. Same, WV, 9-2, Meader's, 18.2; 25. Greider Leghorn Farms, 600 L-F-Y, Victor Koser Co., 9-4, 26. Same, 150 WHF, Good, 12.1, 25 & 26 included 60 males at 70 to lot buyers); 27. Farm Bureau (Jacob C. Herr), 850 WV-P-Cap, 14-2, W. C. Mellinger, 24.4; 28. Same, 450 WV-P-Cap, 14-2, Ream, 25.1; 29. Same, 350 WV-Cap, 14-2, W. C. Mellinger, 27.6; 30. Same, 800 WV-Cap, 14-2, Mellinger, 27.6.

31. Glenn H. Herr (Jacob Fisher, Jr.), 100 IR-C-Cap, 15. Rissler, 27.6; 32. Same, 350 head, Rissler, 25;; 33. An-

Thomas, 500 WV, 9-2, John N. Thomas, 18.

11. M&B (William Wile), 2,000 WV, 10, Col. Hill, 17.7; 12. Same, 6,000 WV, 10, Col. Hill, 17.7; 13. Same, 2,400 WV, 10, Col. Hill, 17.7; 14. M&B (Ervin Caldwell), 5,600 IRW, 9-2, NO SALE, 17.9 bid; 15. M&B (John L. Herr) 1400 WV-P-Cap, 14-2, Sweigart, 24.7.

16. M&B (Clair Bomberger), 2,900 IRW, 9, NO SALE, 17; 17. M&B (James Pinkerton), 3,500 WXC, 9 Mellinger, 18; 18. M&B (Robert Har-nish), 6,800 WV, 9-2, Man-beck, 18.2; 19. Same, 2,000 WV, 9-2, Mellinger, 18; 20. Same, 2,400 WV, 9-2, Good, 18.

21. Lester S. Wenger, 400 WV-Cap, 14, Ream, 27.2; 22. Raymond H. Weaver, 2,000 CWR, 9-5, Dan Good, 17.8; 23. Eastern States (H. Raymond Charles), 3,000 CWR, 9-2, Meader's 18.2; 24. Same, WV, 9-2, Meader's, 18.2; 25. Greider Leghorn Farms, 600 L-F-Y, Victor Koser Co., 9-4, 26. Same, 150 WHF, Good, 12.1, 25 & 26 included 60 males at 70 to lot buyers); 27. Farm Bureau (Jacob C. Herr), 850 WV-P-Cap, 14-2, W. C. Mellinger, 24.4; 28. Same, 450 WV-P-Cap, 14-2, Ream, 25.1; 29. Same, 350 WV-Cap, 14-2, W. C. Mellinger, 27.6; 30. Same, 800 WV-Cap, 14-2, Mellinger, 27.6.

31. Glenn H. Herr (Jacob Fisher, Jr.), 100 IR-C-Cap, 15. Rissler, 27.6; 32. Same, 350 head, Rissler, 25;; 33. An-

Delmarva - Georgia

Delmarva Has 18.2 Top

Delmarva closed the wk. with 753,700 head, mostly 16.6-18.2. Estimated weekend slaughter is 646,100 head. Georgia closed with 1,557,000 head, mostly 15.0 cents. Estimated weekend slaughter 1,951,000 head.

Delmarva's Fri-Fri volume was about 3,267,600 head, on a rising market, up from 15.5-16.4 range on Mon. to 16.6-18.2 Friday range. Georgia had about 6,338,000 head for Fri-Thurs with market at 14 over weekend, up to 14-15.9 in the middle of the week and off again to 14.

The Delmarva broiler-feed ratio was 3.4 for the week ending Sept. 4, with broilers at 16.15, with mash at \$95.90. Ratio for previous week, six month ago and one year ago also were at 3.4, with broiler average holding in 16.15-16.92 range.

drew G. Miller, 2,000 WV, 10-2, Rissler, 19.1; 34. Martin H. Weaver, 2,600 WV, 9-6, Linn Poultry, 18.2; 35. Same, Good, 18.

36. Same, 3,000 WV, 10-2, Ream, 19-2; 37. Same, 2,800 WV, 10-2, Ream, 18.4; 38. Elvin Blecher, 21 WV, 9-2, Meade's 17.7; 39. Same All; 40. Same All.

41. Same All; 42. John L. Hershey, 1300 IR-C-Cap, 13, Rissler, 26.6; 43. Same, Mellinger, 26; 44. Same, 650 head, Sweigart, 26.1; 45. M & B (Lowell Land s), 3,000 WXC, 8-5, Meader's 18.3.

46. D. Ezra Byers & Son, 300 WRF, 16 mo., Ream, 13-8; 47. J. J. Hess II (Warren Eshelman), 900 WXC, 8-6, Good, 17.8; 48. Same, 1100 WXC, 8-6, J. Robert Charles, 17.9; 49. Aten Bros. (Albert Schmidt), 6,000 WV, 9-2, Starr, 17.7; 50. Mirgantown Feed (Amos Stotzfus Jr.), 6,000 WV, 10-2, Meader's.

51. M&B (Willis Glick Jr.), 340 WV P-Cap, 13-2, Rissler, 25.3; 52. Andrew G. Miller, 2,000 WV, 10-2, Mellinger, 18.6.

Weekly New York Egg Mkt.

From Monday, September 7th to Friday, September 11th

	Mon.	Tues.	Wed.	Thurs.	Fri.
Nearby Whites					
Ext. Fcy.					
Hywts	46 1/2-	46 1/2-	48 -	48 -	
Med.	25 3/4-26	26 1/2-27	28 -	29 -	
Pullets	16 -	16 -	16 -	16 -	16 1/2
Peewees	12 -	12 -	12 -	12 -	
Nearby Browns					
Ext. Fcy.					
Hywts	46 1/2-	46 1/2-	48 -	48 -	
Med.	25 1/2-	26 1/2-	28 -	28 -	
Pullets	17 -	17 -	17 -	16 3/4-17	
Peewees	12 -	12 -	12 -	12 -	
Midwestern Mixed					
Ext. Fcy.					
Hywts	40 1/2-	40 1/2-	41 1/2-	41 1/2-	
Med.	25 -	25 1/2-26 1/2	26 -	26 -	
Pullets	15 -	15 -	15 -	15 -	15 1/2
Stds	26 -28	26 1/2-	23 1/2-	23 1/2-24 1/2	
Checks	18 1/2-	18 1/2-	18 1/2-	18 1/2-	
Midwestern Browns					
Ext. Fancy					
Hywts	42 1/2-	42 1/2-	43 1/2-	43 1/2-	
Midwestern Whites					
Ext. Fcy.					
Hywts	42 1/2-	42 1/2-	43 1/2-	43 1/2-	
Med.	25 -26	26 -27	27 -	27 -	
Pullets	16 -	16 -	16 -	16 -	16 1/2

FRIDAY TREND—Market holds firm and closely cleared on large. A good demand for white mediums also maintained. Pullets steadier.

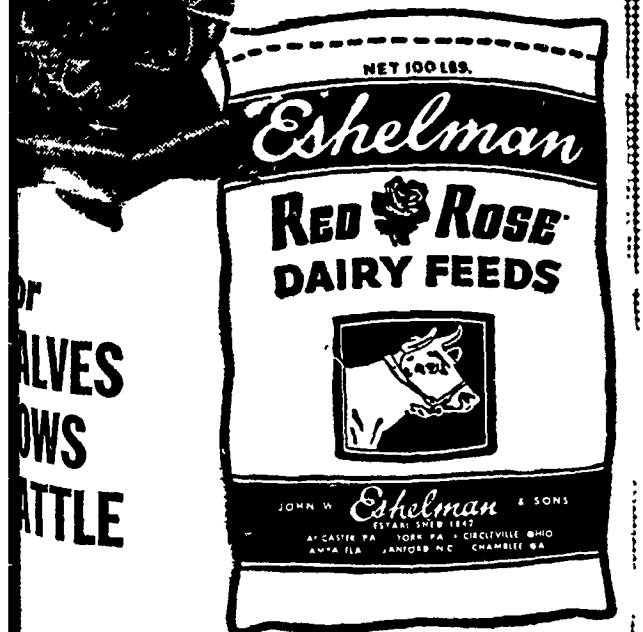
Copyrighted 1958 By Urner-Barry Co.

Layer Emulsion	50 lbs. \$4.40	Milk Replacer	25 lbs. \$3.95
City Mash	\$4.20	Altman's Dog Meal	25 lb. \$2.23
All Mash	\$3.95	Sturdy Dog Meal	\$2.35
Over	\$4.15	Red Oxide Paint	5-gal. \$11.75
Over	\$4.35	Roof Cement	25c, 45c, \$1.20
Chuck Feed	\$4.95	Roof Paint	\$1.10 - \$2.60
Key Developer	\$5.00	Alt. Rat Poison	1 lb. 95c
Net Med	\$4.00	House Brooms	\$1.55
Feed	\$3.40	24" Lawn Rakes	\$1.95
Dairy	\$3.70		
ing Rat on	\$3.70		
Feed 25 lbs.	\$1.50		

Prices subject to change

ALTMAN'S CASH FEED STORE
Harrisburg Pike Ph. Lanc. EX 4-7715
Willis H. Weaver, Mgr.

Best of Feed" for any breed



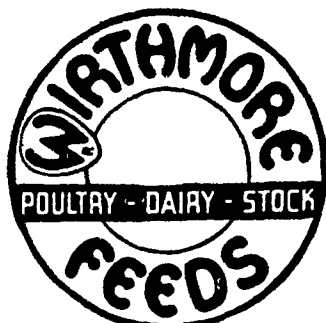
DAVID B. HURST
Bowmansville, Pa.

A. L. HERR & BRO.
Quarryville, Pa.

BUSSER FARMS, INC.
R. D. 2, Columbia, Pa.

BROWN & REA
Atglen, Pa.

WEST WILLOW FARMERS ASSOCIATION
West Willow, Pa.



RESEARCH!

From this research comes the

NEW HI-ENER-G 16 LAYING MASH

7 1/2% More Efficient

Than The Present Formulation

This new formula will lower feed cost by about one cent per dozen — because increased efficiency means less feed per dozen eggs.

"EGGS for HEALTH"

See Us About This New Feed Today!

PAUL M. RESSLER & SON
PARADISE Ph. Strasburg OV 7-3931

Patronize Lancaster Farming Advertisers.

LOANS

FOR ANY FARM PURPOSE
MADE THE FARMER'S WAY

LANCASTER PRODUCTION CREDIT ASS'N

411 W. Roseville Rd
Lancaster, Pa.
Ph. Lanc. EX 3-3921

New Phone Number for

BELMONT
LIMESTONE
R. D. #1, Paradise, Pa.

GAP
Hickory 2-4133

FOR Ready-Mixed CONCRETE

New Holland Concrete Products
NEW HOLLAND, PA.
ELgin 4-2114

VanDale AUTOMATIC FEEDING

Fingertip silage feeding, from silo to feedlot, without ladder, bent back or pitchfork

SAVE time and work by unloading, mixing and delivering silage in one push-button operation. Step up milk and beef production by installing a VanDale Combination Silo Unloader and Automatic Bunk Feeder. Handles any silage, packed or frozen—aven grass—delivering it in more palatable form with greater feed value and less spoilage. VanDale Silo Unloaders are available in the Heavy Duty Model, with or without a Booster Unit. VanDale Bunk Feeders fit any shape bunk. Both are completely portable.

Send for free "FACTS" Bulletin

VanDale
...FIRST IN AUTOMATIC FEEDING
Investigate VanDale's Farm Equipment Financing Program (F E F) available now!

L. H. BRUBAKER
350 Strasburg Pike - Lanc.
R. D. 3, LITITZ, PA.
Ph. Lanc. EX 3-7607
Strasburg OV 7-6002
Lititz MA 6-7766