

## Follow Nine Rules

### For Safety in Filling Silo

Silo filling can be dangerous business. The Hazards of this farm job have become more serious as mechanical equipment has replaced hand labor.

The chopper has replaced the binder and self-unloading wagons have done away with the practice of pitching bundles. The work is done at high speed now. A job which used to require a week or two is finished in a fraction of that time. This speed of operation makes the need for safety even more important.

Nine rules for silo safety follow:

- 1 Keep silo ladders clean and in good repair.
2. Frosty ladders are slippery. Use of the silo chute as a ventilating shaft will result in frost on the ladder and will cause rapid deterioration of the chute and the silo doors.

**CHAIN SAW SERVICE CENTER**  
New & Used  
Snaveley's Farm Service  
NEW HOLLAND EL 4-2214

3 Ventilate the silo. The space between the silo roof and wall seldom provides adequate ventilation. When roof ventilation is not possible, install a dormer window over the chute. Always keep ventilators open during silo filling and when you are taking silage from the silo.

4 Leave a roof section open for at least 2 weeks after silo filling. Close the roof section when you have sealed the silo.

5 During silo filling always have the blower running when someone is in the silo.

6 Close and seal the silo doors only as filling progresses.

"Prompt Bail Bond Service"

**BUHRMAN'S CONVENIENT PARKING LOTS**

Opposite Brunswick Hotel — Opposite Post Office

Next to Western Auto Store 115 East King Street

Norman A. Buhrman, 228 N. Duke St.

"Prompt Bail Bond Service"

## USE HIGH Calcium Limestone

- MODERN SPREADING
- PROMPT SERVICE

CALL COLLECT  
Phone ST 6-7114

**STANLEY S. HOFFER**

R. D. 3, QUARRYVILLE

I called on several of our Honegger chick customers last week. Generally they were too busy to talk long. However, in answer to the question:

"How are your Honegger Layers doing?"

I noted the following replies . . . .

**FOR THE "BETTER" POULTRYMAN . . .**



- Really doing good.
- Best birds we ever had.
- Housed more pullets than we paid for.
- Easy to handle.
- Egg size excellent
- After 22 months of lay still doing 60% and good shells.
- Eggs 92% A's and bet.er.

These poultrymen are your neighbors.

Stop in at our booth at the Quarryville and Lampeter Farm shows to learn more about the Honegger Layer and what they will do for YOU.

**Windle's Hatchery**

HAROLD G. WINDLE  
COCHRANVILLE, PA.  
Phone: Atglen LY 3-5941

J. HOWARD MOORE,  
Sales Mgr.

Second Avenue  
LITITZ, PENNA.  
Phone: MADison 6-5408

Phone us collect to order Honegger Chicks.

ses. Keep the doors open as near to the level of the crop as possible.

7. Nitrogen dioxide fumes may develop when you have ensiled stunted corn from a heavily fertilized field. Do not breathe these fumes.

They are yellow-brown or reddish in color, are heavier than air and may accumulate on top of the crop in a closed silo or may flow down the silo chute and accumulate around the base of the silo.

When you see or suspect nitrogen dioxide fumes, turn the blower at full speed for several minutes before entering the silo. The fumes soon disappear from well-ventilated silos. They are usually only produced for a few days after stunted, highly fertilized corn is ensiled.

8. When treating crops with any kind of dry chemical, wear some sort of dust mask and goggles while you are in the silo during filling.

9. When working around the silo, climb and down, and handle ops with machinery or horizontal silos, as well as you perform eration, "How can with greatest safety

39 Cents Is

### Farmers' Share of Food Dollar

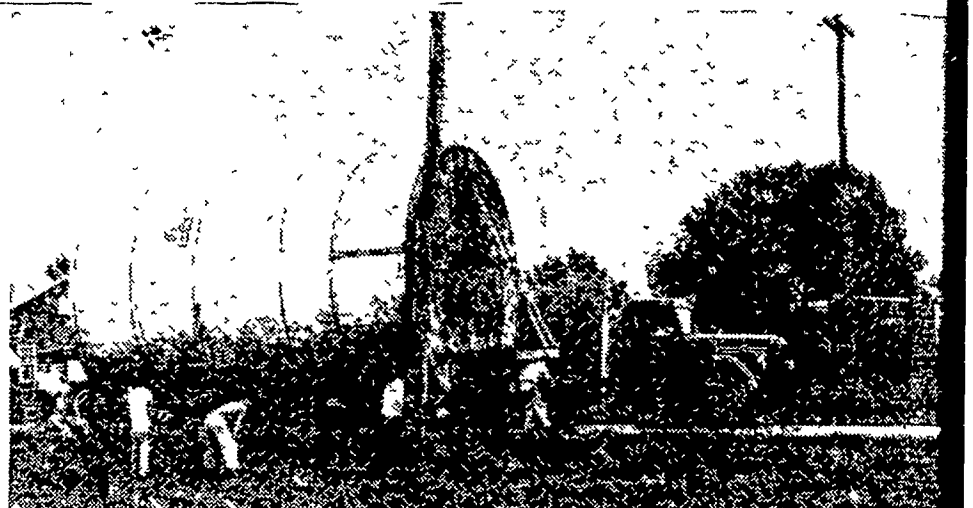
Latest U. S. Department of Agriculture figures show that the farmer is getting 39 cents of each food dollar — the lowest percentage since 1939. The most farmers received since World War I was 53 cents in 1945. Although the retail price of

bread has gone up since 1947; the price of wheat declined 20%. High prices for labor and materials keep prodding the price upward. The National Grange reports that the cost of (Turn to page

## Have you seen the NEW HOLLAND STONE

Made especially for the man who is building and wants quality, beauty, dignity and lasting durability. Call and write to:

**New Holland Concrete Products** NEW HOLLAND, PA. Phone: ELgin 42



Tuesday and Wednesday of last week the ponderous steel tank, shown in the photograph, was moved from the Gulf distribution plant on Liberty Street in Lancaster to the property of W. L. Zimmerman & Sons in Intercourse, a distance of sixteen miles. The route covered was east on Liberty Street and out the Lititz Pike and through Grand View Heights to New Holland Avenue, east to where it left the New Holland Pike on to the Peters Road via Zelteneich to Intercourse.

The tank eighteen feet in diameter, was hauled on its side on its special trailer so that it had ground clearance by barely three inches. When it stood on its end twenty-five feet above ground so that trucks can be filled in case of electric pump failure. It will stand at the edge of the Community Sales Grounds where many other oil storage tanks are buried. In addition to Pennsylvania State Police escort, electric and telephone crews cleared and lifted wires. The entire undertaking was well planned and executed by the H. S. Bunting firm so that the project went through without a serious incident.

The W. L. Zimmerman & Sons business was started fifty years ago and the department for truck delivery of home heating oils, gasoline, etc. was started in 1909. This department is headed by Paul E. Zimmerman, a member of the Pennsylvania State Police. Other owners are Elmer and Leroy Zimmerman. Zimmerman's had been selling Gulf petroleum products since 1909 and is reputed to be Gulf's oldest customer.

**COMING!** FIRST AMERICAN-CANADIAN TOUR  
**WORLD FAMOUS OBERAMMERGAU Passion Play**  
MAIL ORDER NOW

Featuring **VAL BALFOUR**

ORIGINAL ENGLISH SPOKEN VERSION

Sponsored by Lancaster Junior Chamber of Commerce

**FULTON THEATRE**

LANCASTER

SEPT. 23 - 24 - 25 - 26 - 27 - 28

Curtain Time 8:30 P. M.

2 Performances Sunday—2:30 PM & 7:00 PM

ENCLOSE STAMPED, ADDRESSED RETURN ENVELOPE  
PASSION PLAY HDQTRS. Ph. EX 7  
24 N. QUEEN ST., LANCASTER, PA.  
Enclosed is check/money order totaling \$ \_\_\_\_\_  
Send me \_\_\_\_\_ choice tickets at \$ \_\_\_\_\_  
Date of Performance Desired \_\_\_\_\_ Mat \_\_\_\_\_  
Name \_\_\_\_\_  
Address \_\_\_\_\_ Phone \_\_\_\_\_  
City \_\_\_\_\_ Zone \_\_\_\_\_ State \_\_\_\_\_  
Make remittance payable to PASSION PLAY

**ALL SEATS RESERVED**  
\$1.00 — \$1.25 — \$1.50 — \$1.75  
\$2.50 — \$2.75 — \$3.00