

# County Exhibitors Place Fancy Poultry Show

... Pa., August 27, Best Colored Female and the ... entry by B. E. Best Female in the Show ... Harrisburg architect-ribbons ... exhibitor for. The show is a special fea- ... 30 years, today- ture added to this year's ... Best Bantam of the Poultry Festival during the ... award against a field- 11th annual Dutch Days' cele- ... than 200 entries in ebration here. It is sponsored ... Pennsylvania' -Poultry by the Federation in cooper- ... tion's Poultry Fanci- ation with the Hershey Es- ... tates. The show is designed ... Golden Sebright Hen for persons who want a year- ... by Starr also won the round hobby.

## IRYMEN

*We have it ready for you!*

money and do a "top-  
" feeding job  
obining home grown  
with B-B 32% Pro-  
xing feed.



OP IN AND WE WILL  
RK OUT THE BEST  
RMULA TO FIT  
YOUR NEEDS

- |                                   |   |
|-----------------------------------|---|
| S. O. TRUPE<br>East Earl, R. D. 1 | IRA B. LANDIS<br>779 Valley Rd., Lancaster      |
| GRAYBILL & SON<br>Bareville       | B. G. MELLINGER & SON<br>Willow Street, R. D. 1 |
- carry all BULL BRAND Dairy Rations ●

*"I thought my old tractor was a sweetheart..."*



until I got a **Case-o-matic**.  
**PROOF DEMONSTRATION!**  
hour Proof Demonstration convinced me that there was  
POWERFUL difference between Case-o-matic Drive and  
old tractor. My new Case-o-matic tractor plows the  
best fields non-stop ... does far more work in less time—  
with less fuel, too! Believe me, it will pay you to have a  
SE-O-MATIC PROOF Demonstration on your farm."  
**FREE!** Handy Plastic Raincoat  
with your demonstration  
It's our "thank you" for the privilege of dem-  
onstrating. Make a demonstration date today  
—discover the powerful difference!

Special  
allowance

**TRADE NOW!**  
You'll never get  
a better deal.

- CALL US TODAY FOR A PROOF DEMONSTRATION ON YOUR FARM**
- |                                       |                                  |
|---------------------------------------|----------------------------------|
| HERR'S IMPLEMENT STORE<br>WEST WILLOW | ARTHUR S. YOUNG & CO.<br>KINZERS |
| R. STAUFFER                           | A. L. HERR & BRO.<br>QUARRYVILLE |
| MARTINDALE                            | WALTER BINKLEY & SON<br>LITITZ   |
| YLOR BROS.<br>RHEEMS                  |                                  |

Included in this year's show were birds of 30 different varieties with every basic color in their feathers. Other ribbon winners were: David J. Minick, 16, Bainbridge, Pa., whose Black Rose Comb Cockerel took both Best Colored Male and Best Male in the Show awards; George Schroeder, a sales representative from Honesdale, whose White Cochin Cock won Best Shaped Male, and Guy S. Buch, a retired Lititz, Pa. paperhanging contractor, whose Black Rose Comb Hen took the Best Shaped Female award.

The top 10 dollar cash award and Poultry Federation plaque went to the first display winner, Mrs. Anne E Freeburn, a state employee from Harrisburg, Pa., Mrs. Freeburn had the highest total score from winnings with her Non-bearded Mille Fleur. A second prize of seven dollars and a Federation

Lancaster Farming, Saturday, September 5, 1959—11 plaque went to Guy Buch, who exhibited a Rose Comb White. Third place went to William H. Shott, an Route 1, Dauphin, Pa. industrial chemical salesman who showed Ruff Wyandottes. Fourth prize went to Bruce Lentz, Route 3, Dillsburg, Pa., with White Call Ducks. They received five and three

dollars, respectively, as well as a Poultry Federation plaques. Judges for the exhibit were George Schroeder, vice President of the Poultry Federation, senior judge; Harry H. Kauffman, Penna. State University Poultry Extension Department, and Ray Baker, owner of a Manheim, Penna. millworking firm.

## Pullet Management Bulletin Issued by AFMA Reserchers

Chicago, Illinois, August 27, 1959—"18 Management Recommendations for Growing Pullets" have been issued by the Nutrition Council of American Feed Manufacturers Association, according to an announcement by W. T. Diamond, AFMA Secretary-Treasurer. Diamond, said, "These rec-

ommendations are the result of 24 months of arduous work by the Council and the splendid cooperation of the United States Department of Agriculture and the 48 Land-Grant Colleges and Experiment Stations."

AFMA is offering the recommendations in attractive leaflet form and selling them in quantities at 2½c. each.

Diamond stated, "In May, 1957, the Nutrition Council's Management Committee started their painstaking task of developing these recommendations. During the intervening two years they have conducted a voluminous correspondence of questionnaires and proposals. They checked with industry specialists four times, and with the U. S. Department of Agriculture and poultry department heads of Land-Grant Colleges and Experiment Stations on two separate occasions"

The pattern of thorough checking and obtaining agreement has been followed in developing each of the ten sets of Uniform Management Recommendations issued by the AFMA Nutrition Council during the past 10 years.

Other sets of recommendations previously issued include those for:

- Chick and Broilers
  - Laying Flocks
  - Breeding Turkeys
  - Growing Turkeys
  - Brooding Poults.
  - Raising Dairy Calves
  - Swine Sow and Litter
  - Growing Fattening Swine
  - Swine Breeding-Gestation
- Each of these sets are published in leaflet form and are also available from AFMA in quantity at 2½c. each.

Grass silage fits well with management of modern high yielding varieties of grasses and legumes. Usually the first growth needs removal before weather is favorable making hay.

**For Greater Profits Feed  
W. W. F. Poultry and  
Livestock Feeds**

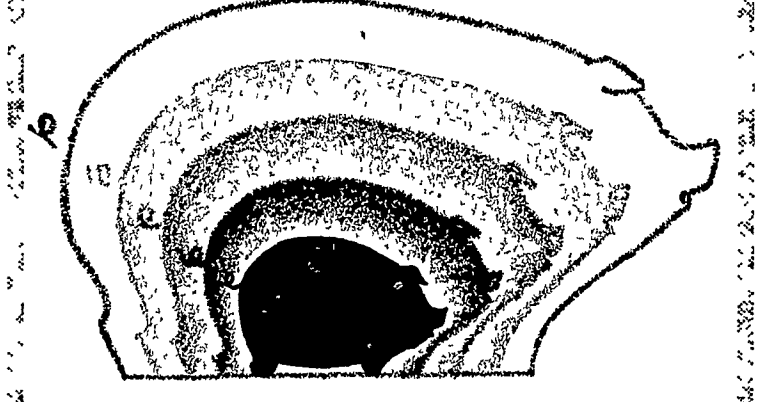
Outstanding for Production and Efficiency

- "Banafly" Killer
- Ortho Fly Bait and Spray
- Timothy Seed
- Shotgun Shells
- Rye Grass
- Canadian Pasture Grass

**WEST WILLOW FARMERS ASSOCIATION**

WEST WILLOW Ph. Lanc. EX 4-5019  
FAMOUS FOR DELIVERY IN MINUTES

## Pig to Pork FASTER!



**Red Rose SWINE SUPPLEMENTS**  
PIG & SOW SUPPLEMENT  
HOG SUPPLEMENT

For more pork at less cost per pound of gain, ask us about the Red Rose feeding program. Red Rose Supplements are fortified with zinc, vitamins and antibiotics to give you more pork at less cost per pound of gain.

COMBINES WITH YOUR OWN GRAIN



- |   |   |
|---|---|
| JOSEPH M. GOOD & SON<br>R. D. 1, P-r-d-in-Hand, Pa. | JOHN H. BONHOLTZER<br>R. D. 4, Lancaster, Pa. |
| MOUNTVILLE FEED SERVICE<br>R. D. 2, Columbia, Pa.   | SNADER'S MILL<br>R. D. 1, Stevens, Pa.        |
| LEROY GEIB, EST.<br>R. D. 2, Manheim, Pa.           | WALTER & JACKSON, INC.<br>Christiana, Pa.     |
| V. B. GRAYBILL & SON<br>Refton, Pa.                 |   |

**LOUDEN LITTER CARRIERS Make Barn Chores EASIER**

SAVE ½ your cleaning out time  
Eliminate back-breaking drudgery  
Install a Louden litter car system 48  
to 1 ratio worm gear ... twin wheel  
roller bearing trolleys ... "double-  
life" one piece track ... 12 basic  
heavy water-tight tubs for use for  
your barn equipment needs

STALLS AND STANCHIONS WATER BOWLS

**L. H. BRUBAKER**  
350 Strasburg Pike  
Lititz, R. D. 3  
Ph. Lanc. EX 3-7607  
Lititz MA 6-7766  
Strasburg OV 7-6002

**LOUDEN**  
Everything for FARM BUILDINGS