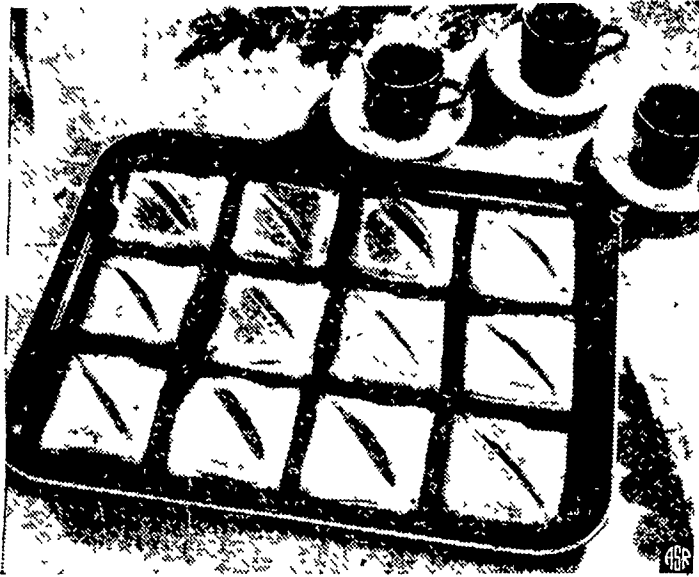


"I Spy Ham-wiches" A New Snack-Time Toasted Treat



Here's a new trick with everyone's favorite sandwich, ham and cheese. Fresh white bread, pressed together to form tarts, holds a delicious filling of American cheese and tasty deviled ham that makes these sandwiches as good to eat as they are to see. They take only a few minutes to fix, a few minutes in a hot oven, and they come out delicately brown and crisp with a delicious "hammy" flavor. You might pass this recipe along to your teen-ager too, so that she can treat her crowd to these "I Spy-Ham-wiches" soon.

I Spy Ham-wiches

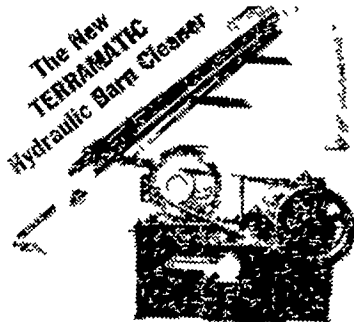
- 24 slices fresh white bread, crusts trimmed
- 12 slices American cheese, approx 2 1/2" square
- 2 Family Size (4 1/2 oz.) cans deviled ham

For each sandwich, place a slice of cheese in center of a slice of bread. Spread cheese generously with deviled ham. Cover with second slice of bread which has been cut in half, diagonally. Press outside edges together with fork. Bake on cookie sheet at 400° for 8 to 10 minutes or until lightly browned. Makes 12 sandwiches.

CHECK THE COLLAR

A well-made collar adds to the appearance and wearing qualities of a man's suit, states Miss Thelma Baierl, Penn State Extension clothing specialist. For good appearance, the lapels should have clean cut edges and lie flat to the chest with a graceful roll. To check inside material and workmanship, turn back the edge of a lapel. If it springs back with no wrinkles, it is probably hand shaped and lined with high quality hair canvas. Gently pull a lapel edge to make sure there is no pulling which will prevent stretching.

To check lettuce quality, examine the core at the root of a head, suggests Miss Catherine B. Love, Penn State consumer education extension specialist. If the core is firm and light in color, the head will probably be of good quality.



This patented HYDRAULIC control will operate any number of gutter cleaners, from ONE MOTOR, or of the hydraulic system of the tractor; simply by piping oil to all CYLINDER operated gutter cleaners.

L. H. Brubaker

350 Strasburg Pike - Lanc.

R. D. 3, LITITZ

"Prompt Bail-Bond Service"

BUHRMAN'S CONVENIENT PARKING LOTS

Opposite Brunswick Hotel —

Opposite Post Office

Next to Western Auto Store
115 East King Street

Norman A. Buhrman,
228 N. Duke St.

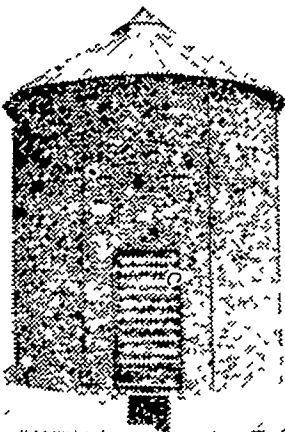
"Prompt Bail-Bond Service"

Still your best crib buy

New Low Price

(F.O.B. Stock Points)
Over 1200 bu. capacity—means 1st
year storage at less than 25¢ per bu.

EXCLUSIVE SPEEDY
ROOF RAFTERS MAKE
SPEEDY CORN CRIBS



Twice as Fast

Speedy roof rafters guarantee easy, proper placement of roof panels the first time. Rafters add great strength to the roof. Panels need only to be bolted together in three places. It's another big time-saving feature you get only in Speedy Bar-Lok corn cribs.

Stands up best—lasts longer
Wire mesh panels are 5-gauge
wire—thick as a 1/4" bolt! No

bulge or sag. Sturdy 26-gauge galvanized roof is securely anchored to 9 steel roof rafters and side panels. Can't blow off!

Come in today and see the Speedy Bar-Lok corn crib. Let us prove to you that Speedy is twice as fast—twice as easy to erect. Let us show you all the other features that make Speedy Bar-Lok your best corn crib buy.

LANDIS BROS.

MANHEIM PIKE

LANCASTER

PHONE EX 3-3906

Land Use Becoming Major Problem

Competing demands on rural land for industry, agriculture, highways, homes, and recreation will make land use one of the major policy questions as popular pressure increases in the United States, declared Dr. M. E. John and Dr. James H. Copp of Pennsylvania State University during a meeting of the American Sociological Society August 27 at Cornell University.

The Penn State researchers stated. They urged rural sociologists to conduct more studies in the field of policy questions. They said the public is demanding knowledge about land zoning and the influences of highway construction on land use.

"One of the major tasks of rural sociologists in an industrialized society is to study rural society in tradition under the impact of technology," Drs. John and Copp

stated. They commend rural sociologists for pioneering of farm practice adoption and mechanization. And they called for social studies of vertical integration in agriculture.

Dr. John, chairman of the Dept. of Agricultural Economics and Rural Sociology at Penn State, said agricultural college editors and U. S. Department of Agriculture administrators are "clamoring for research in effect of mass media such as radio, and television."

Dr. Copp suggested rural sociologists study groups with rural studies now located in the heart of cities. He noted much strife in cities traced to rural urban facts.

Studies of farming occupation have been conducted, Dr. John claimed.

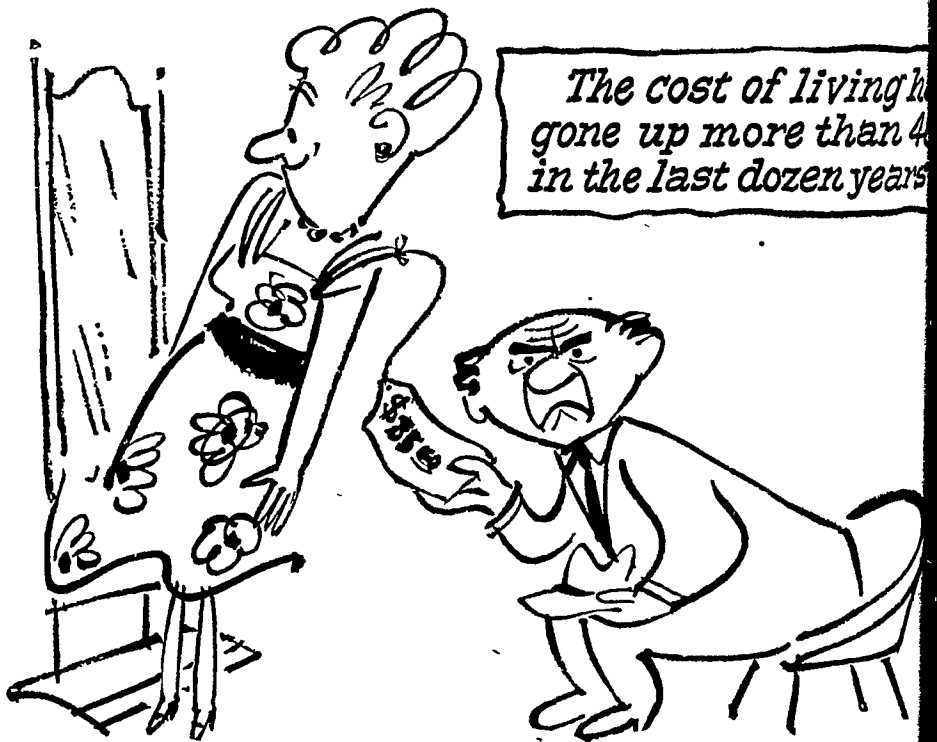
We know very little about recruitment of a farm to an occupation. He said we know little about the part of the suitcase farmer, the gentleman farmer

Have you seen the NEW HOLLAND STONE

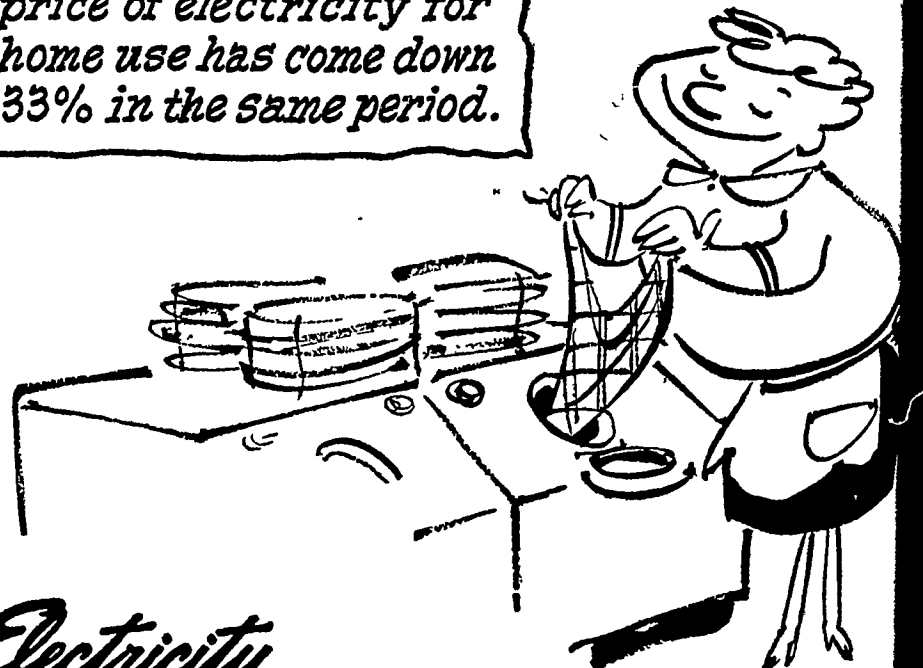
Made especially for the man who is building and wants quality, beauty, dignity and lasting durability. Call and write to:

New Holland Concrete Products NEW HOLLAND, PA. Phone: ELgin 42

It's a Fact...



yet the average unit price of electricity for home use has come down 33% in the same period.



Electricity...
THE BIGGEST BARGAIN in your FAMILY BUDGET

Pennsylvania Power & Light Company