

## Festival Events Listed

Pennsylvania Poultry Federation will hold its annual festival August 27 to 30 at Hershey, in conjunction with the 11th Annual Dutch Days Celebration.

More than 25,000 persons are expected to be fed by this year's festival. More than 15,000 chickens are being shown for the event. In addition, more than one ton of meat and 250 gallons of chicken corn soup are on hand to feed the attending crowds.

### Dutch Days.

A special feature at this year's festival will be a "do it yourself" barbecue demonstration area where visitors will be invited to barbecue their own chicken under the supervision of poultry specialists.

A new feature this year is a Poultry Fanciers Show. This show will include Bantams of all breeds and varieties. All entries will be judged Thursday, August 27.

Highlights of the Festival will be the selection of Miss Pennsylvania Poultry Industry and the Pennsylvania Poultry Cooking Champion. Coronation ceremonies for the Queen and Cooking Champion will be held Saturday, August 29.

Lancaster Farming advertising brings results.

**THE EUROPEAN CHAFER**, a damaging pest of meadows, lawns, pastures and winter grains, has been found in W. Va., and for the first time in New York City.

The chafers, first discovered in the U.S. in western N. York in 1940, has been slowly spreading despite Federal State efforts to stop it with quarantines and insecticidal treatments.

The larvae feed on roots and cause unsightly barren spots that expose soil to rapid erosion. Heavy infestations have caused crop failures.

**YOUNG BEEF** bulls fed 80 milligrams of aureomycin daily gained 10 per cent faster than those not fed the antibiotic, according to Arkansas Exp. Sta. researchers.

However, animals not receiving aureomycin gained slightly more efficiently. Five bull calves received aureomycin and five did not, during the 126-day test. Animals fed aureomycin showed no apparent differences in general health, feed consumption or conformation, the scientists said.

RENT  
PORSCHÉ  
EL TRACTORS  
50 PER DAY  
NAVELY'S  
RM SERVICE  
EW HOLLAND



## Martin's Limestone

- Corrects acid in soil
- Increases crop yield
- Insures growth of clover and legumes
- Saves money each year

M. Martin, Inc., Blue Ball, Pa.

Phones:  
New Holland ELgin 4-2212  
Terre Hill Hillcrest 5-3445

## HOW TRUE LINES® PERFORM

as shown by 1958 Pennsylvania Random Sample Test



PROFIT TRAITS	TEST AVERAGE	TRUE-LINES
INCOME PER HEN OVER FEED COST	\$3.587	\$4.780 FIRST PLACE
DAYS TO 50% PRODUCTION	180.5	175
EGGS PER PULLET HOUSED	204.3	242.1 FIRST PLACE
DOZEN 24 OZ. EGGS	853.6	966
LBS. FEED PER DOZ. EGGS	4.9	4.1 FIRST (TIE)
PER CENT AA GRADE (Scored on Albumen Height)	72.6	83.4
LIVABILITY	93.6%	95.8%

### ALL-AROUND LAYERS

True-Lines produced \$1.19 more income; laid 37.8 more eggs per hen housed; used 8/10 pound less feed per dozen eggs. In a flock of 1,000 such hens, this represents \$1190 more income, 3,150 more dozens of eggs; and a saving of a ton and a quarter of feed, per 1,000 hens.

### GREATER STAYING POWER DOES IT

Years ago, many other breeders stopped trapping 365 days a year. They have trapped 300 days a year or less Colonial, for 32 consecutive years, has trapped 365 days a year—65 days longer. The result? Where others stopped selecting for STAYING POWER, Colonial continued. Today, you get that extra STAYING POWER in TRUE-LINES...full measure for your money. GREATER POWER plus 24,318,000 scientific measurements of egg numbers, size and quality PAY OFF in TRUE-LINES. And TRUE-LINES Chicks save you up to 25%. Write now for full information.

## LET US GIVE YOU THE FULL FACTS

Including FLOCK RECORDS

OF TRUE-LINES

IN THIS AREA—

COME IN AND SEE US

FOR PRICES AND

BOOKING DATES

## Heisey Poultry Farm

E. MUSSER HEISEY & SON  
MT. JOY, PA. Ph. OL 3-2221

## New Bulletin Explains U.S. Milk Orders

What a Federal milk marketing order is, how it operates, and what it means to farmers and others—these points are explained in "Questions and Answers on Federal Milk Marketing Orders" issued today by the U. S. Department of Agriculture.

Some typical questions answered in the revised publication are: "Who is regulated by an order?"—"How is milk priced under an order?"—"How is action on establishing an order first started?"—"Where are Federal orders now operating?"

Prepared by the Dairy Division of USDA's Agricultural Marketing Service, the pamphlet contains 13 pages and is identified as AMS-122. Single copies may be obtained free from the Mktg. Info. Div., AMS, USDA, Washington 25, D. C.

EVERYONE WELCOME

## Rough and Tumble Engineers

11TH ANNUAL

# REUNION

August 20-21-22

KINZERS - LANCASTER COUNTY, PA. - ON RT. 30

In The Penna. Dutch Country

LARGE DISPLAY OF ENGINES

MANY LIVE DEMONSTRATIONS

STEAM COOKED FOOD

ENTERTAINMENT FOR THE LADIES

Hobbyists - Bring Your Hobby

Trading Post

RIDES FOR EVERYONE

1890 Model Steam Engine Operating on Miniature Railroad

ADMISSION:— Men over 16 Yrs. - \$1.00 or a 1959-1960 Membership Card - LADIES FREE

"I THOUGHT ALL TRACTORS WERE PRETTY MUCH ALIKE . . .

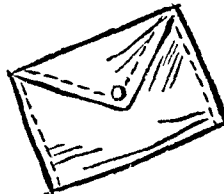


... until I had a

Case-o-matic

## PROOF DEMONSTRATION!

Let's face it . . . most tractors are pretty much alike. But get a Case-o-matic tractor proof demonstration and you'll feel a POWERFUL difference! Case-o-matic Drive tractors sense changing loads instantly . . . automatically increase pull-power up to 100% without clutching, shifting or stalling. Try Case-o-matic . . . and you'll never want to be without it!



GET YOUR FREE RAINCOAT

It's our "thank you" for the privilege of demonstrating. Call us right away and let's make a demonstration date. No obligation, of course.

Now is the time to TRADE and get our Special extra generous allowance!

SEE US TODAY:

ARTHUR S. YOUNG & CO.  
KINZERS

HERR'S IMPLEMENT STORE  
WEST WILLOW

KAYLOR BROS.  
RHEEMS

WALTER BINKLEY & SON  
LITITZ

JARED R. STAUFFER  
MARTINDALE

A. L. HERR & BRO.  
QUARRYVILLE

