

● **Tricks With Toast**
(From page 7)

grease Laundering in hot water and detergent or soap may remove these spots but some extra treatment may be needed

You'll get best results by working in a liquid detergent where the grease spots are the worst. Then rinse the material in hot water. On non-washable materials use a dry cleaning grease solvent.

PSU Research Stresses Dried Milk Flavor

Stale flavor found in reconstituted dry whole milk may be due to certain chemical compounds, called carbonyls, formed in heating and storing the milk, a researcher from the Pennsylvania State University reports.

Owen W. Parks, graduate assistant in dairy science at Penn State, said 14 of these carbonyl compounds - have been identified in laboratory tests Parks spoke at the annual meeting of the American Dairy Science Association at the University of Illinois

"Various methods of separating carbonyl-type compounds from each other are being investigated at Penn State," Parks stated. "Most of the stale flavor components found in dry whole milk tested in our laboratory have been removed by distilling under vacuum," he added

The Penn State experimenter indicated that "flavor threshold values" would be needed for each individual carbonyl before drawing conclusions as to the significance of carbonyls in the stale flavor of dry whole milk. He stressed the need for more data on identified carbonyls.

These findings by the the Pennsylvania Agricultural Experiment Station may aid the dairy industry in solving the problems of stale flavor found in dry whole milk. Many people object to reconstituted dry whole milk due to strange flavors

Working with Parks on these Penn State experiments are Noble P. Wong, graduate assistant, and Dr Stuart Patton, 1957 Borden Award winner of \$1000 for chemistry studies of milk

Consider seam finishes, such as cording or welting, brush or loop fringe, when making slip covers, suggests Penn State extension home management specialists. If used, be sure seam finishes are colorfast preshrunk, and easy to clean. If the slipcover fabric is figured, match the welting or cording to the background. With plain fabric, either blend or contrast the finish with the fabric. Contrasting cording or fringe accents construction lines

Farmers Home Adm. Loans One-Third Million in Area

Farm families in Lancaster, Lebanon and Chester counties borrowed more than \$330,000 from the Farmers Home Admin. during the 1959-59 fiscal year, according to W. Hoover, FHA county supervisor.

Hoover reports that during the fiscal year, farmer borrowers returned \$142,621 in installments on previous loans Under FHA regulations, all collections are remitted directly to the U. S Treasury and Congress sets a new loan sum each year.

All active FHA borrowers in the tri-county area are current or paid ahead of schedule on their loans, Hoover said.

Ten years ago, FHA operating loans in this area averaged about \$5,000; last year these averaged more than \$10,000.

Operating loans for 58-59 totaled about \$231,000, for livestock, equipment and other operating changes.

The families also borrowed \$99,660 for real-estate investments. Local banks providing \$70,320 under the insured loan program of FHA.

The three county commit-

tee screened 97 loan applications and farmers made calls to the FHA office for loans or discussions,

Many farmers were in developing farm plans an analysis of their needs so as to qualify for conventional private operative credit

Hoover pointed out farmers who can qualify for credit in regular operations cannot obtain FHA loans the FHA has aided farmers in establishing operations for regular

WASP STINGS
First, apply an ice pack to the area of the sting. Then make a paste of water, baking soda and cornstarch. If there are no stings or a general itchy area, apply the above and then see a doctor promptly.

FLORIN LAYING FEEDS

Are Designed to Meet the Needs of Every Poultryman

- LOW COST PER DOZEN
- EXCELLENT FEED CONVERSION
- HIGH-QUALITY EGGS

Put Your Laying Flock on

Florin La-Mor

(ALL MASH)

OR

Florin Egg Producer

(MASH - GRAIN)

Wolgemuth Bros., Inc.

FLORIN

PHONE MT. JOY OL 3-2411

Babcock's

BESSIE PULLETS



Babcock Bessie

Available Now

8 TO 16 WEEKS OF AGE

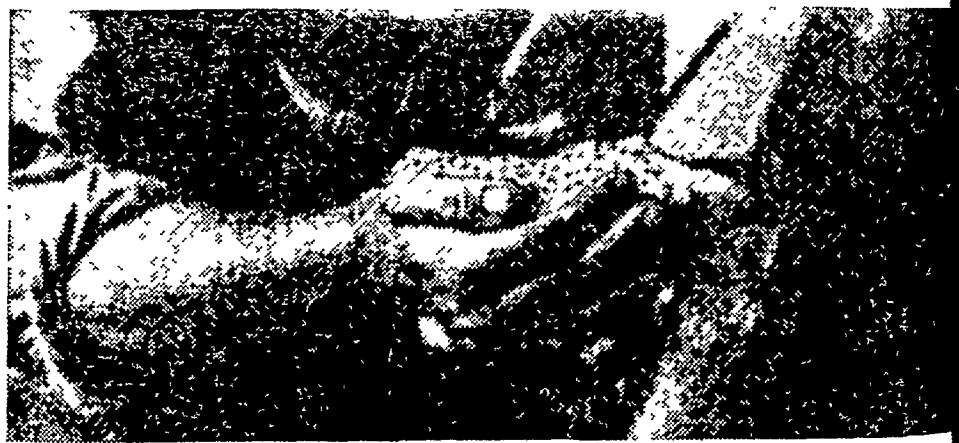
Delivered Prices

8 WEEKS **95c** 12 WEEKS **\$1.28**

All pullets subject to prior sale All Bessie pullets are full-fed on the best feeds available. They are grown in confinement and are isolated from older birds.

BABCOCK HATCHERY, Inc.

R. D. 3, LITITZ, PENNA.
Phone MADison 6-5872



GET CLEAN GRAIN

With Non-Explosive—Safe

OUTSTANDING
RELIABLE
KNOWN

Use Dow Serafume

- GRAIN BINS
- GRANARIES
- FLAT STORAGE



SERAFUME

Use Dow Serafume

ANYONE CAN
FUMIGATE GRAIN
EFFECTIVELY AT
LOW COST

- WHEAT
- RYE
- OATS
- CORN

YOU OWE IT TO YOUR-SELF . . .

J. C. Ehrlich Co.

736 E. Chestnut St.
LANCASTER
Phone EX 7-3721