

# Major Mkts. Stdy at 16

er priced average  
ck about one-quar  
Thursday on the  
Poultry Exchange  
s and 83,285 head  
39 lots and 100,-  
s  
ere 21 lots, with  
s, selling on a  
cent range, aver-  
cents Four lots,  
eghorn fowl, sold  
-119 range Eight  
375 capettes, sold  
1  
d of 24,425 broil-  
or an 1831 aver-  
year's correspond-  
d 29 of 47 lots of  
ng, with 73,925 of  
d Average on 24  
625 broilers was  
g is the complete  
sale, with seller,  
parentheses, am-  
breed, age in wks.  
buver and price  
DE WV - white  
L-F-Y - leghorn  
ng, IRW - indian  
es, W Mt - white  
C - cockerels, and  
J Brubaker, 800  
J Koser, 118. 2  
ghorn Farm, 1300  
119 (85 males,  
rvey W Stoessel,  
103, Carl B. Ris-  
Same 4600 WV,  
Poultry 188. 5.  
Lnebaugh, 2000  
mel K Good, 17.75  
Horn (C F Kopp)  
9-3, NO SALE, 17  
ne, 16 bid. 8. Sa-  
F-Y, Koser, 112.  
Bushong (Harry

T. Markey), 4000 WV, 9, Sta  
rr Poultry, 18.6. 10. M & B  
(Elam B. Riehl), 1750 WV-C  
9-2, Starr, 18.1.  
11. Same ALL. 12. M&B  
(Benj. Brubaker) 1800 CWR-  
P-Cap, 13-3, Linn, 25.9. 13.  
Same, 625 CWR-C-Cap, 13-3  
W. C. Mellinger, 25. 14. Sa-  
me, 1000 CWR-C-Cap, 13-3,  
Mellinger, 25. 15. M&B (Cl-  
arence Shenk, Jr.) 350 WV-  
P-Cap, 13-2, Risser, 26.1.  
16. Same, Good, 28.1. 17.  
EH S. Martin, 1250 WV-C-  
Cap, 13-5, C. F. Manbeck,  
25.5. 18. Same, Mellinger, 28  
19. Mervin E Peifer, 200 L-  
E, Risser, 11.3. 20. Morgant-  
own Feed (Arthur Graybill)  
7000 WV, 9, NO SALE, 15.  
21. Neff Bros, 1350 IRW,  
10, Marvin Sweigart, 18.9  
22 Robert B. Noll, 2600 WV  
C, 9-1, Starr, 18.5. 23. SAME  
ALL. 24. Morgantown Feed  
(Amos K. Stoltzfus), 4000 W  
Mt., 9, College Hill Poultry,  
18.6. 25. Daniel G. Forry,  
3700 WV, 9-2, Meader's 18.6.  
26 Same, 3400 WV, 9-2,  
Meader's, 18.6. 27. Same,  
Mellinger, 18.6. 28. Same,  
2500 WV, 9-2, John N. Tho-  
mas, 18.8. 29. Wenger's Mill  
(Vernon Zimmerman), 1475  
WV, 9-3, John E. Rettinger,  
18.75. 30. Same, NO SALE,  
18.4 bid.  
31. Same, 1000 WV, 9-3,  
NO SALE, 17 bid. 32. Floyd  
L. Hershey, 2600 WV, 9-4,  
NO SALE, 18.4. 33. Ray-  
mond N. Miller (Ralph Zim-  
merman), 11,800 IRW, 9-6,  
Good, 18.7. 34. Same, 10400  
IRW, 9-6 Ream, 18.7. 35. Sa-  
me, 3600 WV, 9-6, Good, 18.7  
36. Jacob C. Herr, 750 WV

# Weekly New York Egg Mkt.

## Weekly New York Egg Mkt.

From Monday, June 29th to Friday, July 3rd

Delmarva closed the week early Thursday for the Fourth with a firm market on heavy offerings and good demand. Est. Thurs and Fri. slaughter, 975,000 Thursday sales totaled 8824,200 head, 73% at 17 - 18.  
Mon. - Wed. Delmarva sales totaled 1,747,400 on weaning range of 17 - 18 - 17 - 17.4.  
Georgia closed with 679,000 head, with 95% at 16. Thurs slaughter off about 200,000 from last week, at 841,000 head.  
Fri - Wed Georgia sales totaled 5,153,000 at a steady base price of 16 cents in middle of range.

**Nearby Whites**

Ext. Fcy.	Hywts 41 -	41 -	41 -	40 1/2-41
	Med. 37 -	37 -	37 -	36 -
	Pullets 22 -22 1/2	22 -22 1/2	22 -22 1/2	22 -22 1/2
	P-wees 17 1/2-	17 1/2-	17 1/2-	17 1/2-

**Nearby Browns**

Ext. Fcy.	Hywts 42 -	42 -	42 -	42 -	42 -
	Med. 36 -	36 -	36 -	36 -	36 -
	Pullets 23 -	23 -	23 -	22 -22 1/2	22 -22 1/2
	P-wees 17 1/2-	17 1/2-	17 1/2-	17 1/2-	17 1/2-

**Midwestern Mixed**

Ext. Fcy.	Hywts 38 -	37 -	35 -37	33 -	33 -
	Med. 31 -	31 -	31 -	31 -	31 -
	Pullets 20 1/2-	20 1/2-	20 1/2-	20 1/2-	20 1/2-
	Stds 31 -	31 -	31 -	30 1/2-	28 -29
	Checks 26 -	26 -	26 -	24 -	24 -

**Midwestern Browns**

Ext. Fancy	Hywts 40 -	40 -	40 -	40 -	40 -
------------	------------	------	------	------	------

**Midwestern Whites**

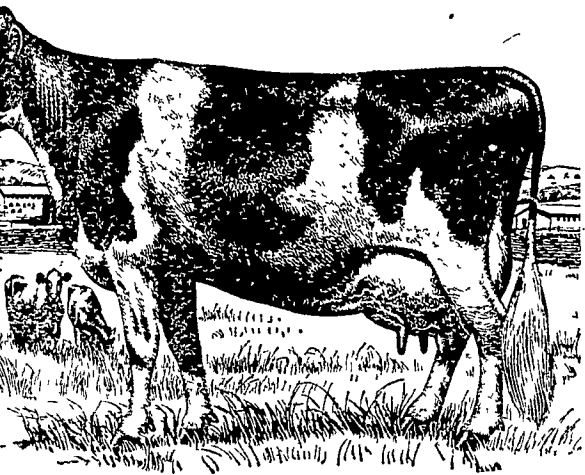
Ext. Fcy.	Hywts 39 -39 1/2	39 -	39 -	35 1/2-	34 1/2-35
	Med. 34 -	34 -	34 -	33 -	33 -
	Pullets 21 1/2-	21 1/2-	21 1/2-	21 1/2-	21 1/2-

**FRIDAY TREND**—Continued irregularity and unsettled tone in spot shell egg market. Some softness in nearby and continued broad selling pressure in Midwestern large, mixed and whites.

Copyrighted 1958 By Uner-Barry Co.

Patronize Lancaster Farming Advertisers.

# Element MASS with GRAIN



## More Milk All Summer Long

Dairyman likes the boost in milk production his lush pasture. He knows it means more dollar milk check . . . and at lower feed cost per cwt. Dairymen know, too, that pasture can't do it alone. Dry feed . . . including grain . . . is needed for laxative effect. This supplementary feeding helps hold body weight, keeps them in better shape up to inherited capacity. Pasture quality changes, too, as the season progresses become dry and less palatable, cows graze weather gets hotter. Supplementary feeding becomes more important then. We are glad to recommend a specific program suited to your pastures. The Beacon Pasture Feeding has helped thousands of dairymen produce more profitably. Chances are it can help you, too.

**Beacon Milling Company**  
DIVISION OF SPENCER KELLOGG & SONS, INC.  
PHILADELPHIA & CARLISLE STS., YORK, PA.  
Telephone: York 8-2341

# BEACON

**THE USDA ACCEPTED** bids June 25 on 120,000 lbs. of frozen whole eggs and on 493,350 lbs of dried whole egg solids Purchases are equal to 52,415 cases of shell eggs. Along with the continuing USDA purchases, the egg industry intensified its own merchandising activities during June to stimulate increased consumption of eggs, according to Dept. spokesmen.

Patronize Lancaster Farming Advertisers.

-P-Cap, 14, Ream, 27.5. 37 J. W. Eshelman & Sons, 900 WV, 9-2, Ream, 18.5. 388 Harvey W. Stoessel, 2900 WV, 10-3, Col. Hill, 18.7. 39. Same, 3300 WV, 10-3, Linn, 19.



**Our Customers Are Our Best Salesmen**  
Pa. U.S. Approved  
Pullorum-Typhoid Clean  
**KEYSTONE HATCHERY**  
Rep: Daniel R. Myers  
Ph. Leola OL 6-2243  
Hatchery: Ph. Leola OL6-7851  
Farm: Ph. Ephrata RE 3-6179

# LOOK AHEAD

## to all your harvests



No matter what your harvest — grain, seed, beans or corn — you can count on the **BIG-BIN 66** . . . now, more than ever, truly an **ALL-CROP Harvester**.  
There's a new, two-row corn head that brings to the cornfield such **ALL-CROP** benefits as:


- Dependable, wide-flow feeding — keeps harvest moving
- Gentle, rubber-on-rubber shelling — less crackage
- Exclusive saw-tooth wind valves — cleaner sample in the bin.

ALL-CROP is an Allis-Chalmers trademark.

**ALLIS-CHALMERS**   
Sales & Service

**Snavelys Farm Service**  
New Holland, Pa.

- Rye Grass
  - Field Brome Grass
  - Winter Vetch
  - Sweet Clover
  - Soy Beans
  - Winter Rye
- Available For Pasture or Ensilage
- Cert. Piper Sudan
  - DeKalb Sudax
  - DeKalb Forage Sorghum
  - Black Amber Sorghum
  - Hegari Sorghum
  - Black Wilson Soy Beans
  - Wabash Soy Beans
  - DeKalb 90 Day Corn
- Orders Filled Promptly
- P. L. ROHRER & BRO., INC.**  
SMOKETOWN, PA.  
Ph. Lanc. EX 2-2659



**FOR ANY FARM PURPOSE  
MADE THE FARMER'S  
WAY  
Lancaster  
Production  
Credit Ass'n.**

411 W. Roseville Rd  
Lancaster, Pa.  
Ph. Lanc. EX 3-3921

Don't neglect your soil  
Use a . . . .

# COVER CROP

For Soil Improvement

- Rye Grass
- Field Brome Grass
- Winter Vetch
- Sweet Clover
- Soy Beans
- Winter Rye

Available For Pasture or Ensilage

- Cert. Piper Sudan
- DeKalb Sudax
- DeKalb Forage Sorghum
- Black Amber Sorghum
- Hegari Sorghum
- Black Wilson Soy Beans
- Wabash Soy Beans
- DeKalb 90 Day Corn

Orders Filled Promptly

**P. L. ROHRER & BRO., INC.**  
SMOKETOWN, PA.  
Ph. Lanc. EX 2-2659