

Pa. Farm Prices Off 9% From June '58 Standards

Prices received by Penna. farmers in June were down nine per cent, or 21 points on the index from June, 1958, according to a report released July 1 by the Pa. Crop Reporting Service.

The prices-received index rose one point from May, due primarily to increases in prices of fruit and vegetables. Vegetable prices increased three per cent over May, but were still off 10 per cent from June, 1958.

Food gains dropped two per cent from May and four per cent for barley and rye.

The meat animal index is nine per cent below 1958 levels.

The price of chickens con-

tinued to drop and reached a new 25 year low, with eggs unchanged, but still at the low west level since May, 1942.

Wool prices increased nine per cent from May.

Milk cow prices held at \$305 per head, highest since 1951, offering farmers an ideal time to cull herds, when considering the relatively high meat animal price levels.

U. S. Prices

The June 15 USDA parity ratio was the lowest since June of 1957, as it dropped one per cent (3 points) to 242, three per cent below June 15, 1958.

Lower prices of meat, wheat, vegetables and milk were partially offset by sharply higher prices for potatoes.

The Prices-Paid index declined one point lower than last year, taxes and wages. Lower dust and feed prices offset higher machinery prices.

The overall farm price parity ratio on June 15 was 81 off one per cent from May 15, and five per cent from June 1958.

At the same time the summer living cost index remained at a record high, one per cent above last year.

County Man Named For State Feed Assn. Post

Donald W. Parke, Lancaster, has been named executive secretary of the Pennsylvania Millers' & Feed Dealers' Association. The announcement was made Thursday by Association President Robert I. Aten.

Parke will assume his new duties on July 1. He succeeds Richard I. Ammon who recently resigned to accept a similar position with the Northeastern Poultry Producers Council.

For the past 13 years, Mr. Parke has been Field Secretary and Assistant to the Managing Director of the Pennsylvania Retailers' Association with headquarters in Lancaster.

In this position he has had extensive experience working on both state and national legislation affecting retailers; conducting research on retail personnel practices, wages and store operation; the organization and development of information on labor relations and the administration of a group insur-

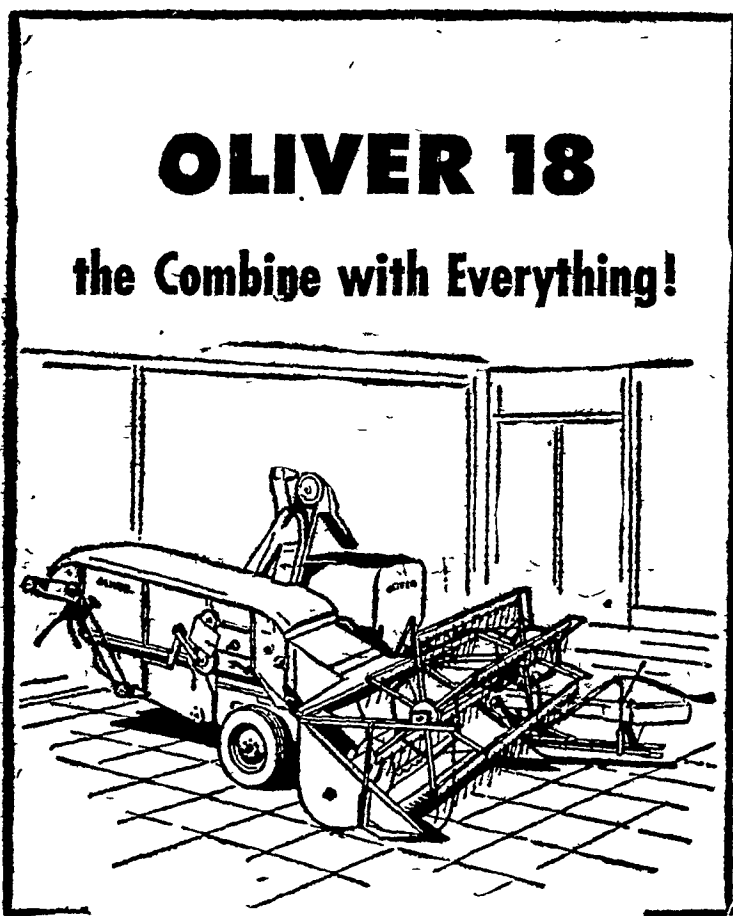
ance program.

Parke also has been active in national trade circles and is currently serving a term as director of the American Retail Association Executives an organization of executives of associations affiliated with the American Retail Association and similar to the Secretaries Circle of the Grain & Feed Dealers National Association.

A graduate of Duke University, during World War I he served in the U.S. Army and was discharged as a Captain of Anti-Aircraft Artillery.

An active member of the First Presbyterian Church of Lancaster, he is currently Treasurer on the Board of Trustees. The Parkes have two daughters and reside at 351 Delp Road in Lancaster.

Commenting on Parke's selection, Aten stated he was the unanimous choice of the Board of Directors after extensive screening and interviewing of over a dozen candidates.



OLIVER 18 the Combine with Everything!

Everything you want in a pull-type—and more! Here's a full 7-foot-cut combine, with an auger header that eliminates drapers. And matching its bite are big-capacity units all the way through the machine to handle your heaviest grain and bean crops.

This Oliver 18 saves more from the start. Its semi-revolving reel, with bats going straight down into the grain, reduces shattering losses. Next, 90% of the threshed grain is stopped at the cylinder by Oliver's famous "Man Behind the Gun" before it can mix with straw. An unusually long straw rack gets the rest.

Other grain- and time-saving units include the 25-bushel tank, adjustable concaves, swinging drawbar, large cleaning unit. Engine or PTO model. See the Oliver 18 before you buy.

G. E. Busler
Peach Bottom, Pa.

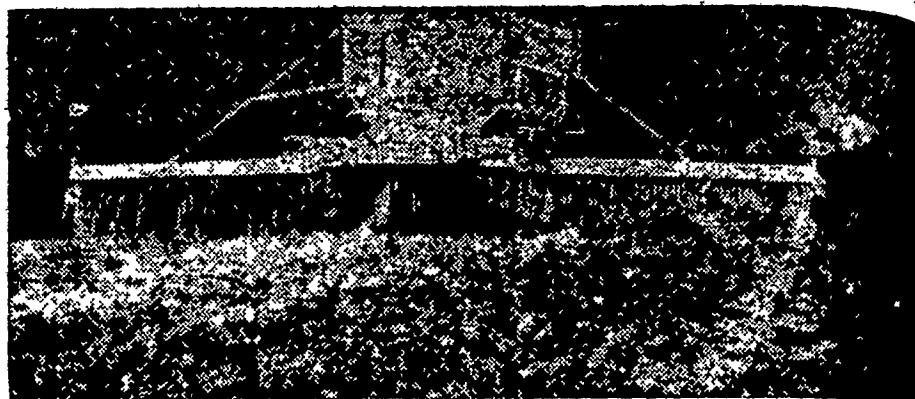
Chas. J. McComsey
& Sons
Hickory Hill Pa.

M. G. Hershey & Son
Manheim, R. D. 1

Farmersville
Equipment Co.
Ephrata, R.D. 2

J. B. Lapp
Atglen, Pa.

MARTIN'S LIMESTONE



Order your Limestone now for even spreading by our modern spreaders.

Quick Service Free Soil Tests Quality Limestone

Ivan M. Martin, Inc., Blue Ball, Pa.

Telephones: New Holland ELgin 4-2112 Terre Hill Hillcrest 5 3453

Some Essentials in the Proper Feeding and Care of Dairy Cows

1. Use through-out the year, economical well balanced rations which provide good nutritive requirements.
2. Adjust the amount of feed for each cow to her actual production.
3. Use palatable rations containing a reasonable variety of feed-stuff.
4. Rations should be slightly laxative rather than constipating.
5. Plenty of good water readily accessible.
6. Dry periods of proper length.
7. Comfortable surroundings both in winter and during pasture season.
8. Regularity in feed and care.
9. Kindness on the part of the herdsman.

Strict observance of these simple essentials will greatly improve net income from the dairy herd.

Miller & Bushong's Green Pastures Dairy Feed

Complete { now available in economical
14% or 16% } labor saving bulk

and 32% Concentrate in bags to be mixed with your grain. Will meet all of your herds requirements for

- MAINTENANCE
- MILK PRODUCTION
- GROWTH and REPRODUCTION

For a profitable successful dairy program, call us at Lancaster EXpress 2-2145.



Miller & Bushong, Inc.

Rohrerstown, Pa.

Ph. Lancaster EX 2-2145

Manufacturers of Poultry and Live Stock Feed Since 1875