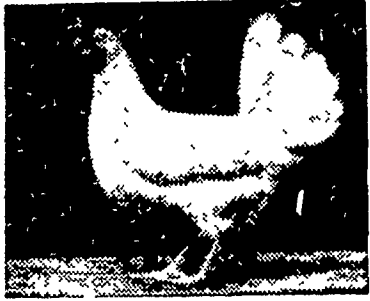


# Babcock's

BESSIE  
PULLETS



Babcock Bessie

Available Now

8 TO 16 WEEKS OF AGE

Delivered Prices

8 WEEKS 95c 12 WEEKS \$1.28

All pullets subject to prior sale  
Bessie pullets are full-fed on the best  
available. They are grown in con-  
tinent and are isolated from older birds.

**BABCOCK HATCHERY, Inc.**

R. D. 3, LITITZ, PENNA.

Phone MADison 6-5872

All-Job, All-Farm  
**OLIVER 550**  
Risk New Utility Power



here—a new 2-3 plow all-purpose tractor with  
flexibility than ever.  
sharp new styling, bright new colors of meadow  
and clover white, new starting safety switch,  
twin-dial instruments. All are yours in the  
Oliver 550.  
but that's just a start. You get the most modern  
uty-tractor features of all. Your new 550 feels  
own way, goes from position to draft control  
omatically. Your choice of a gasoline or diesel  
ine, Powerjuster wheels, power steering, Inde-  
pendently Controlled PTO.  
You get six forward speeds, double-disc brakes,  
ubber spring seat—all at no extra cost. See the  
550 soon. Feel its extra eagerness, its quick,  
both response to every touch.

G. E. Busler  
Peach Bottom, Pa.

J. McComsey  
& Sons  
Hickory Hill, Pa.

Hershey & Son  
Lancaster, R. D. 1

Farmersville  
Equipment Co.  
Ephrata, R.D. 2

J. B. Lapp  
Atglen, Pa.

## Tomato Growers Schedule Meet

A special meeting of the  
Washington Boro Tomato  
Growers' Cooperative for dis-  
cussion of quality mainten-  
ce, handling, marketing and

grading problems has been  
scheduled for 7:30 p.m., Thu-  
rsday on the co-op sales floor

Speakers will include J.  
O. Dutt, extension garden-  
ing specialist, K. L. Stamp,  
marketing specialist and Her-  
schel Fullmer, of the Penna.  
Bureau of Markets

## HIGH

## MAGNESIUM LIMESTONE

Magnesium . . . . .

Mineral Base for Chlorophyl

(Chlorophyl is the green of your plants)

Calcium — Root Builder

Contact the Belmont Limestone Representative  
in your area

John J. Long Peach Bottom, Pa. Hensel Kimbell 8-2560  
Harvey G. Good Intercourse, Pa. Ph. Southfield 8-8451  
Amos Shenk TRinity 2-5802 Conestoga, Pa.

## BELMONT LIMESTONE COMPANY

PARADISE, R. D. 1

Gap Hickory 2-4500

# Hoffman

## SEEDS

ALFALFA · OATS  
CLOVER · LADINO  
FORAGE CROPS  
PASTURE GRASSES  
and >>>>>>>>

FUNK'S



## ORDER RYE GRASS NOW

FOR FREE DELIVERY CONTACT YOUR

Hoffman Salesman or Phone TW 8-3421

## The Beacon Milling Co.

— takes pleasure in announcing

that

## I. B. GRAYBILL & SON

Having Purchased the Business of

Fred L. & John E. Homsher

Is Now The Authorized Dealer Of

## Beacon Feeds at Strasburg

A Full Line of Beacon Feeds

Both in Bags and Bulk will be available

For the BEST in FEED and

the BEST in SERVICE Call

## I. B. GRAYBILL & SON

STRASBURG OV-7-2141

REFTON ST 6-3722

## LF Reviews

(From page 1)

Every tractor equipped  
with rubber tires shall have  
rubber on the entire trac-  
tion surface, at least one  
inch above the flange edge.  
It is permissible to use tire  
chains, consisting of not less  
than five cross chains which  
do not project more than  
one inch from the tire sur-  
face—when required for sa-  
fety.

Every tractor, when oper-  
ated upon a highway, shall  
be equipped with adequate  
brakes for the control of  
movement, and to stop and  
hold the tractor.

No interpretation of the  
Code, shall be construed as  
permitting the owner or op-  
erator of any tractor to use  
the highway in an unusual  
or unreasonable manner, or  
exempt the owners or opera-  
tors from indictment for nu-  
isance, or prevent granting  
of injunctions against unu-  
sual or unreasonable use of  
the highways. Nor shall reg-  
ulated privilege of operation  
on the highways relieve the  
owner or operator of trac-  
tors from liability for dam-  
ages to the highway.

### Size of Tractors

No tractor shall exceed a  
total maximum width, in-  
cluding any load, of 110 in-  
ches, nine feet, two inches.

The fee for a special per-  
mit for the period June 15  
to Dec. 15 each year, author-  
izing the operation or move-  
ment of any over-size self-  
propelled combine, shall be  
\$10 for combines not exceed-  
ing 150 inches - 12½ feet -  
and \$25 for combines of 151-  
166 inches - 17 feet three in-  
ches - in width. Operation of  
such combine is to be con-  
fined to a radius of ten miles  
from the owners home or  
farm.

No tractor shall exceed a  
total maximum length, in-  
cluding load, of 420 inches -  
35 feet. No combination of  
two vehicles, inclusive of  
load, coupled together shall  
exceed a total maximum  
length of fifty feet.

The Code permits, upon  
receipt of a special permit,  
the transportation by a com-  
bination of vehicles loads im-  
possible of separation, which  
do not exceed 70 feet.

### Tandem Operation

First Class tractors are  
permitted under Para. 1, Ar-  
ticle (c), Section 607 of the  
Code to operate upon the  
highway drawing or having  
attached more than one other  
vehicle. The Code specifi-  
cally prohibits tractors other  
than Farm Tractors, from  
operating upon the highway  
drawing more than one other  
vehicle.

The draw-bar or other  
connection between a tractor  
or other vehicle shall not ex-  
ceed 15 feet in length from  
tractor to the other vehicle.  
Whenever the connection  
in chain, rope, cable or a  
bar, there must be attached  
a flag not less than 12 inches  
both in length and width.

### Tractor & Load Weight

Tractors shall not be op-  
erated or moved upon any  
highway with gross weight  
in excess of thirty thousand  
lbs. if of the 2-axle type and  
forty thousand lbs if of the  
three axle type.

Tire width shall be suffi-  
cient so that, including the  
load on the tractor, the  
weight shall not be in excess  
of 800 lbs. on any wheel for  
each normal inch of width  
of tire on each wheel.

Any uniformed peace of-  
ficer, exhibiting his badge or  
credentials of authority, is  
authorized to weigh any  
tractor and load believed to  
be operating unlawfully, and  
may require that such vehi-  
cle be driven to the nearest  
stationary scales if these are  
within two miles.

Excess loads may be re-  
quired to be removed im-  
mediately to meet limits. No  
arrests shall be made in  
cases where the maximum  
limits are not exceeded by  
more than 10 per cent.